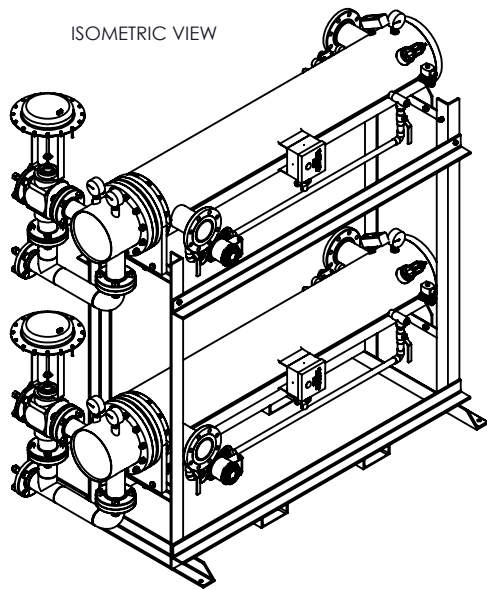
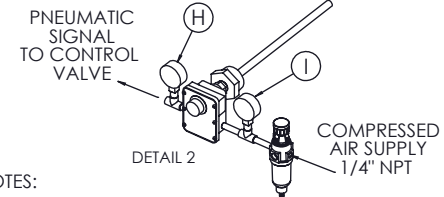
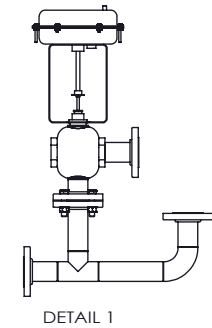
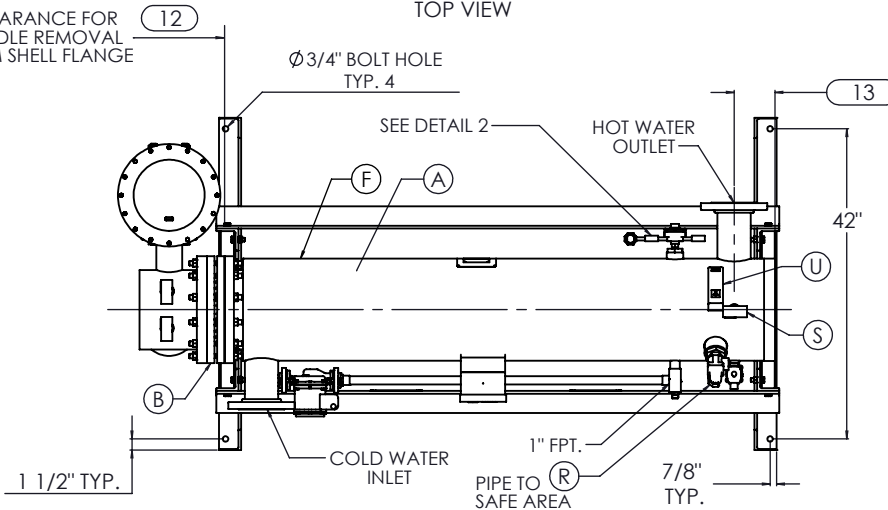


ISOMETRIC VIEW



CLEARANCE FOR BUNDLE REMOVAL FROM SHELL FLANGE

TOP VIEW

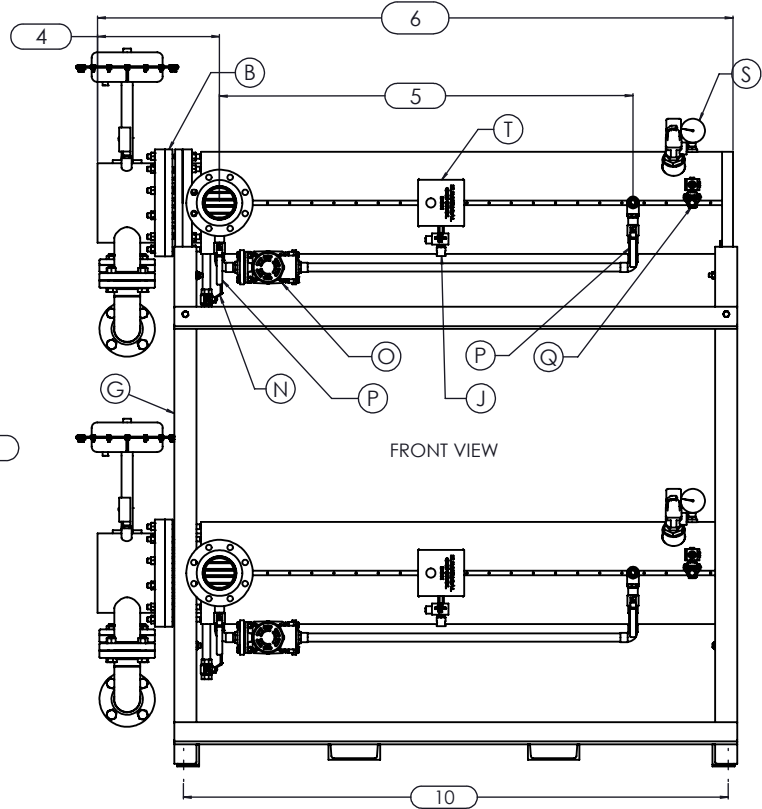
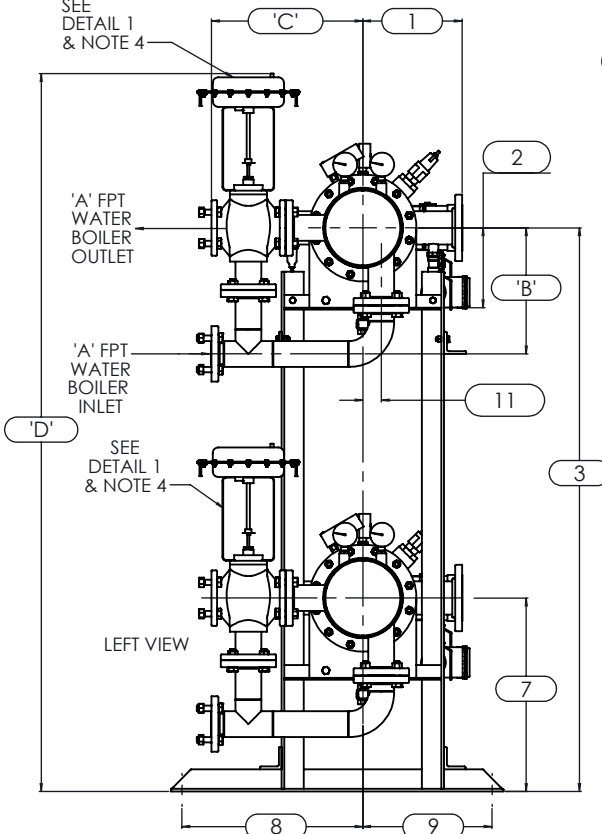


NOTES:

1. REFER TO PRODUCT SPECIFICATION FOR DESCRIPTION OF LETTERED ITEMS.
2. INSTALLATION:
ALL COMPONENTS SHOWN HERE ARE PREWIRED & PREPIPED BY ACE HEATERS.
CUSTOMER WILL ONLY NEED TO PLUMB WATER TO BE HEATED, PIPE STEAM AND CONDENSATE LINES, AND BRING ELECTRICITY TO UNIT.
3. DIMENSIONS ARE SUBJECT TO CHANGE. CONSULT FACTORY FOR TIGHT DIMENSIONS.
4. THIS CONFIGURATION CHANGES FOR VALVE SIZE 1/2" TO 2". SEE DETAIL 1 FOR REFERENCE.

APPROX. EMPTY WT:

SEE DETAIL 1 & NOTE 4

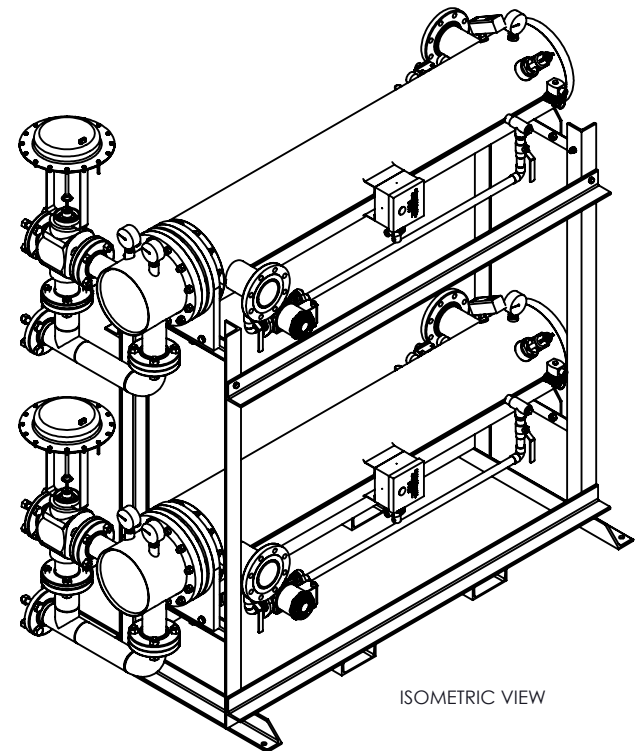


	CERTIFIED BY Ace Heaters, LLC www.aceheaters.com
	MAXIMUM ALLOWABLE WORKING PRESSURE SHELL <u>150</u> PSI @ <u>210</u> °F TUBES <u>150</u> PSI @ <u>370</u> °F
	MIN. D.M.T. <u>0</u> °F @ <u>150</u> PSI S/N _____ YEAR BUILT _____
	MODEL _____ CAPACITY _____ GAL SA. _____
	JOB NO. _____ XXXX

Ace Heaters, LLC
www.aceheaters.com

This document contains proprietary information from AHS, LLC. Do not reproduce or distribute without prior written consent of AHS, LLC.		ASME Section VIII Div 1: 2015 Ed. Design Pressure: 150 psig Test Pressure: 195 psig Max Design Temperature: 370°F	A.I.:
SCALE: NA	Filename: SIHDW - COVER	SHEET 1 OF 2	
Dwg By: JL	Orig Date: 12/29/15	Rev Date:	Checked By:
MINIPACK SYSTEM - HORIZONTAL - DW			
3W WATER - PNEUMATIC VALVE PACKAGE - DUAL UNIT ON DUAL RACK			
Dwg #: SIHDWWA-2-DR-3W SO:			REV 01

SIHDWWA-3W-2DR - DIM, DW - WATER - PNEUMATIC 3-WAY MIXING VALVE PACKAGE, DUAL UNIT ON RACK									
		MP SIZE	5	6	8	10	12	14	16
DIMENSION	ITEMS	1	10	10 1/2	11 1/2	13 1/2	14 1/2	15 1/2	16 1/2
		2	7 11/16	8 3/16	10 1/8	10 13/16	12 1/2	12 1/4	14
		3	59 15/16	60 7/16	62 3/8	76 1/16	77 3/4	77 1/2	79 1/4
		4	13 7/8	14 3/8	15 7/8	16 1/8	17 9/16	21 5/8	24 1/8
		5	55	54 1/2	55 1/4	56	54 1/2	63	66 3/4
		6	80 3/16	81 5/16	83 9/16	85 9/16	88 7/16	100 7/8	106 1/2
		7	22 15/16	23 7/16	25 3/8	26 3/16	27 7/8	27 5/8	29 3/8
		8	26 1/2	26 1/2	26 1/2	26 1/2	26 1/2	26 1/2	26 1/2
		9	15 1/2	15 1/2	15 1/2	15 1/2	15 1/2	15 1/2	15 1/2
		10	68 1/4	69 3/8	70 3/8	71 7/8	74 5/16	82 15/16	82 15/16
		11	1 3/8	1 1/2	2 1/16	2 1/2	3 1/16	3 1/8	3 1/4
		12	64	64	64	64	64	75	80
		13	4 13/16	4 13/16	5 15/16	5 11/16	8 1/8	7 1/4	7 3/8
INLET PIPE SIZE		2 1/2 FLG.	2 1/2 FLG.	3 FLG.	4 FLG.	4 FLG.	5 FLG.	6 FLG.	
OUTLET PIPE SIZE		2 1/2 FLG.	2 1/2 FLG.	3 FLG.	4 FLG.	4 FLG.	5 FLG.	6 FLG.	
VALVE SIZE 'A'	ITEM	VALVE SIZE AND OVERALL LOCATION							
1/2"	'B'	12 1/8	12 1/8	12 1/8	12 1/8	12 1/8	12 1/8	12 1/8	12 1/8
	'C'	16 1/16	16 5/16	17 5/16	19 13/16	21 5/16	23 5/16	25 5/16	
	'D'	75 3/4	76 1/4	78 3/16	91 7/8	93 9/16	93 5/16	95 1/16	
3/4"	'B'	12 9/16	12 9/16	12 9/16	12 9/16	12 9/16	12 9/16	12 9/16	12 9/16
	'C'	17 1/16	17 5/16	18 5/16	20 13/16	22 5/16	24 5/16	26 5/16	
	'D'	75 3/4	76 1/4	78 3/16	91 7/8	93 9/16	93 5/16	95 1/16	
1"	'B'	13	13	13	13	13	13	13	
	'C'	17 1/16	17 5/16	18 5/16	20 13/16	22 5/16	24 5/16	26 5/16	
	'D'	75 3/4	76 1/4	78 3/16	91 7/8	93 9/16	93 5/16	95 1/16	
1 1/4"	'B'	13 3/4	13 3/4	13 3/4	13 3/4	13 3/4	13 3/4	13 3/4	
	'C'	17 1/16	17 5/16	18 5/16	20 13/16	22 5/16	24 5/16	26 5/16	
	'D'	75 3/4	76 1/4	78 3/16	91 7/8	93 9/16	93 5/16	95 1/16	
1 1/2"	'B'	13 9/16	13 9/16	13 9/16	13 9/16	13 9/16	13 9/16	13 9/16	
	'C'	17 1/16	17 5/16	18 5/16	20 13/16	22 5/16	24 5/16	26 5/16	
	'D'	76 1/2	77	78 15/16	92 5/8	94 5/16	94 1/16	95 13/16	
2"	'B'	14 5/16	14 5/16	14 5/16	14 5/16	14 5/16	14 5/16	14 5/16	
	'C'	18 7/16	18 11/16	19 11/16	22 3/16	23 11/16	25 11/16	27 11/16	
	'D'	78 3/16	78 11/16	80 5/8	94 5/16	96	95 3/4	97 1/2	
2 1/2"	'B'	21	21	21	21	21	21	21	
	'C'	15 3/4	16	17	19 1/2	21	23	25	
	'D'	78 15/16	79 7/16	81 3/8	95 1/16	96 3/4	96 1/2	98 1/4	
3"	'B'		23 13/16	23 13/16	23 13/16	23 13/16	23 13/16	23 13/16	
	'C'	N/A	17	18	20 1/2	22	24	26	
	'D'		81 5/16	83 1/4	96 15/16	98 5/8	98 3/8	100 1/8	
4"	'B'			26 3/16	26 3/16	26 3/16	26 3/16	26 3/16	
	'C'	N/A	N/A	21	23 1/2	25	27	29	
	'D'			85 1/4	98 15/16	100 5/8	100 3/8	102 1/8	
5"	'B'				27 1/4	27 1/4	27 1/4	27 1/4	
	'C'	N/A	N/A	N/A	26 1/4	27 3/4	29 3/4	31 3/4	
	'D'				98 15/16	100 5/8	100 3/8	102 1/8	



ISOMETRIC VIEW

NOTES:

- 1/ DIMENSIONS IN INCHES, AND SUBJECT TO CHANGE WITHOUT NOTICE.
- 2/ DIM 'B', 'C', 'D' ARE TO BE APPROXIMATED ONLY, CONSULT FACTORY FOR TIGHT DIMENSIONS.

Ace Heaters, LLC		
www.aceheaters.com		
This document contains proprietary information from AHS, LLC. Do not reproduce or distribute without prior written consent of AHS, LLC.	ASME Section VIII Div 1: 2015 Ed. Design Pressure: 150 psig Test Pressure: 195 psig Max Design Temperature: 370°F	A.I.
SCALE: NA	Filename: SIHDW - COVER	SHEET 2 OF 2
Dwg By: JL	Orig Date: 12/29/15	Rev Date: _____ Checked By: _____
MINIPACK SYSTEM - HORIZONTAL - DW		
3W WATER - PNEUMATIC VALVE PACKAGE - DUAL UNIT ON DUAL RACK		
Dwg #: SIHDWWA-2-DR-3W	SO:	REV 01