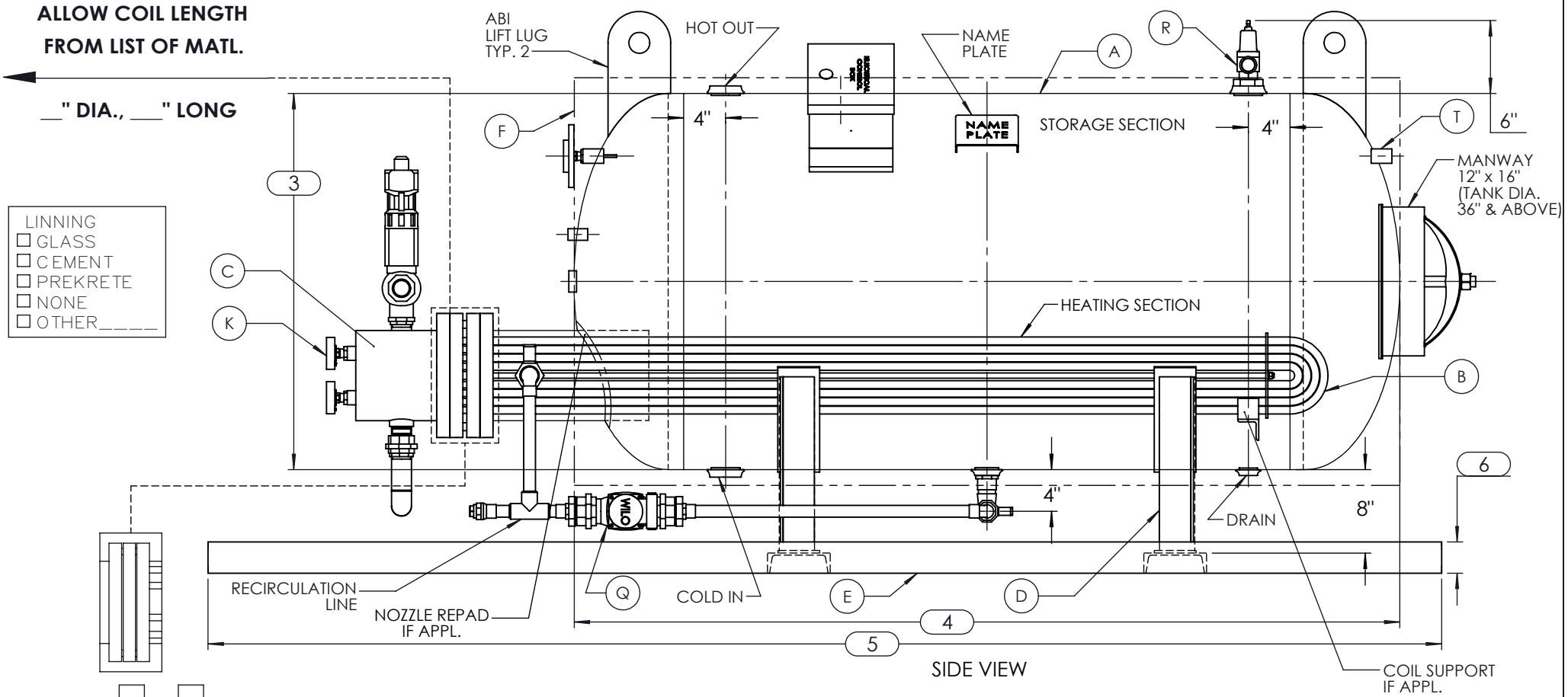


FRONT VIEW



SIDE VIEW

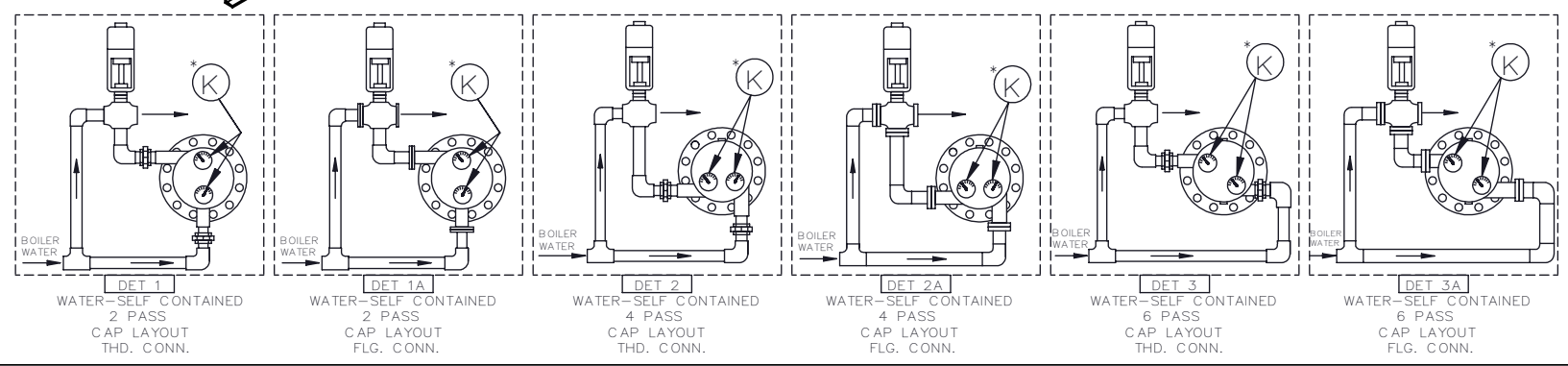
- LINNING
- GLASS
  - CEMENT
  - PREKRETE
  - NONE
  - OTHER \_\_\_\_\_

- SINGLE WALL    DOUBLE WALL

- USE  DET 1 or  DET 1A  
 DET 2 or  DET 2A  
 DET 3 or  DET 3A

DIMENSIONS	SHELL SIZES				SHELL SIZES				SHELL SIZES					SHELL SIZES														
	1802	1803	1804	1805	3004	3005	3006	3007	4204	4205	4206	4207	4208	5405	5406	5407	5408	6605	6606	6607	6608	6609						
1	24.32				36.32				48.32					60.66					72.66									
2	18.41				24.92				30.92					37.26					43.26									
3	18				30				42					54					66									
4	34	46	58	70	4	64	76	88	100	4	70	82	94	106	118	4	88	100	112	124	4	94	106	118	130	144		
5	62	74	86	98	5	100	112	124	136	5	109	121	133	145	157	5	127	139	151	163	5	133	145	157	169	181		
6	3				3				3					4					4									
DIMENSIONS	SHELL SIZES				SHELL SIZES					SHELL SIZES					SHELL SIZES					SHELL SIZES								
	2404	2405	2406	2407	3604	3605	3606	3607	3608	4804	4805	4806	4807	4808	6005	6006	6007	6008	6009	7205	7206	7207	7208	7209				
1	30.32				42.32					54.32					66.66					78.66								
2	21.41				27.92					33.92					40.26					46.26								
3	24				36					48					60					72								
4	61	73	85	97	4	67	79	91	103	115	4	73	85	97	109	121	4	91	103	115	127	139	4	97	109	121	133	147
5	95	107	119	131	5	106	118	130	142	154	5	112	124	136	148	160	5	130	142	154	166	178	5	136	148	160	172	184
6	3				3					3					4					4								

NOTES:  
 1. REFER TO "LIST OF MATERIALS" FOR DESCRIPTION OF LETTERED ITEMS.  
 2. ALL COMPONENTS SHOWN ARE PREWIRED AND/OR PREPIPED BY ACE HEATERS. CUSTOMER NEEDS ONLY TO PLUMB WATER TO BE HEATED, STEAM AND CONDENSATE LINES, AND BRING ELECTRICITY TO THE CONTROL BOX.  
 3. ALL DIMENSIONS ARE IN INCHES AND SUBJECT TO CHANGE WITHOUT NOTICE.  
 \* LOCATION OF GAGES SHOWN FOR REPRESENTATION ONLY, NOT NECESSARILY ACCURATE LOCATIONS.



CERTIFIED BY

*Ace Heaters*

MAXIMUM ALLOWABLE WORKING PRESSURE  
 SHELL 150 PSI @ 390 °F  
 TUBES 150 PSI @ 390 °F  
 MIN. D.M.T. 0 °F @ 150 PSI  
 S/N \_\_\_\_\_ YEAR BUILT \_\_\_\_\_

MODEL \_\_\_\_\_  
 CAPACITY \_\_\_\_\_ GAL SA. \_\_\_\_\_ SQFT  
 JOB NO. \_\_\_\_\_ XXX \_\_\_\_\_

### ACE HEATERS

This document contains proprietary information from Ace Heaters. Do not reproduce or distribute without prior written consent of Ace Heaters.

ASME Section VIII Div 1:  
 Design Pressure: 150 psig  
 Test Pressure: 195 psig  
 Max Design Temperature: 390°F

A.I.:

SCALE: N/A

Filename: PHWS

SHEET 1 OF 1

Dwg By:

Orig Date:

Rev Date:

Checked By:

#### Horizontal Packaged Storage Water Heater

Water - Self Contained Operated Valve Package

Dwg #: PHWS

SO:

REV. 1