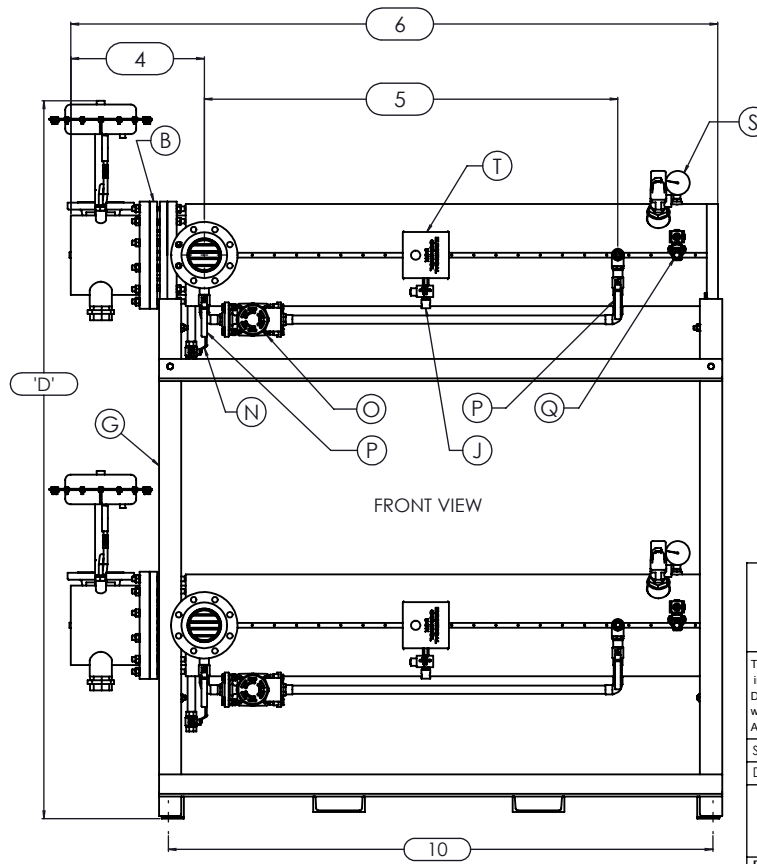
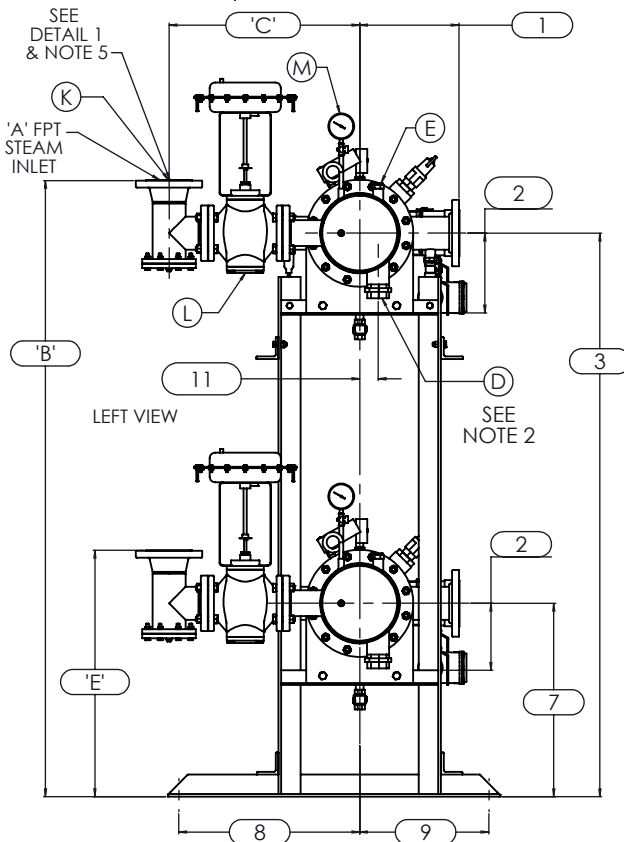


- NOTES:
- REFER TO PRODUCT SPECIFICATION FOR DESCRIPTION OF LETTERED ITEMS.
 - CONDENSATE:
CONDENSATE IS TO BE PIPED FROM HEATER WITHOUT LIFTS TO A VENTED RECEIVER OR DRAIN BELOW THE ELEVATION OF THE HEATER'S CONDENSATE OUTLET.
 - INSTALLATION:
ALL COMPONENTS SHOWN HERE ARE PREWIRED & PREPARED BY ACE HEATERS. CUSTOMER WILL ONLY NEED TO PLUMB WATER TO BE HEATED, PIPE STEAM AND CONDENSATE LINES, AND BRING ELECTRICITY TO UNIT.
 - DIMENSIONS ARE SUBJECT TO CHANGE. CONSULT FACTORY FOR TIGHT DIMENSIONS.
 - THIS CONFIGURATION CHANGES FOR VALVE SIZE 1/2" TO 2". SEE DETAIL 1 FOR REFERENCE.
- APPROX. EMPTY WT:



	CERTIFIED BY	
	<i>Ace Heaters, LLC</i> www.aceheaters.com	
	MAXIMUM ALLOWABLE WORKING PRESSURE	
	SHELL	150 PSI @ 210 °F
	TUBES	150 PSI @ 370 °F
MIN. D.M.T. 0 °F @ 150 PSI		
S/N _____ YEAR BUILT _____		
MODEL _____		
CAPACITY _____ GAL SA. _____		
JOB NO. _____ XXX		

Ace Heaters, LLC
www.aceheaters.com

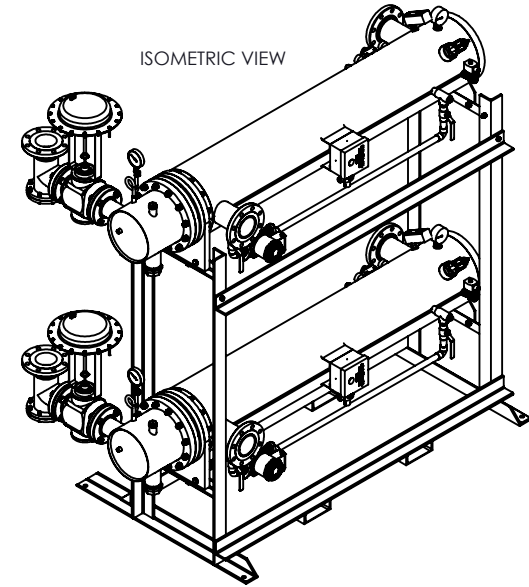
<small>This document contains proprietary information from AHS, LLC. Do not reproduce or distribute without prior written consent of AHS, LLC.</small>	<small>ASME Section VIII Div 1: 2015 Ed. Design Pressure: 150 psig Test Pressure: 195 psig Max Design Temperature: 370°F</small>	A.I.:
<small>SCALE: NA</small>	<small>Filename: SIHDW - COVER</small>	<small>SHEET 1 OF 2</small>
<small>Dwg By: JL</small>	<small>Orig Date: 12/30/15</small>	<small>Rev Date:</small>
		<small>Checked By:</small>

MINIPACK SYSTEM - HORIZONTAL - DW
STEAM - PNEUMATIC VALVE PACKAGE - DUAL UNIT ON DUAL RACK

Dwg #: SIHDWSA-2-DR | SO: | REV 01

SIHDWSA-2-DR, DW - STEAM - PNEUMATIC VALVE PACKAGE - DUAL UNIT ON RACK

	MP SIZE	5	6	8	10	12	14	16
ITEMS	1	10	10 1/2	11 1/2	13 1/2	14 1/2	15 1/2	16 1/2
	2	7 11/16	8 3/16	10 1/8	10 13/16	12 1/2	12 1/4	14
	3	59 15/16	60 7/16	62 3/8	76 1/16	77 3/4	77 1/2	79 1/4
	4	13 7/8	14 3/8	15 7/8	17 5/8	23 9/16	24 13/16	28 9/16
	5	55	54 1/2	55 1/4	56	54 1/2	63	66 3/4
	6	80 3/16	81 5/16	83 9/16	87 1/8	94 7/16	104 1/16	110 15/16
	7	22 15/16	23 7/16	25 3/8	26 3/16	27 7/8	27 5/8	29 3/8
	8	26 1/2	26 1/2	26 1/2	26 1/2	26 1/2	26 1/2	26 1/2
	9	15 1/2	15 1/2	15 1/2	15 1/2	15 1/2	15 1/2	15 1/2
	10	68 1/4	69 3/8	70 3/8	71 7/8	74 5/16	82 15/16	82 15/16
	11	1 3/8	1 1/2	2 1/16			3 1/8	3 1/4
	12	64	64	64	64	64	75	80
	13	4 13/16	4 13/16	5 15/16	5 11/16	8 1/8	7 1/4	7 3/8
INLET PIPE SIZE	2 1/2 FLG.	2 1/2 FLG.	3 FLG.	4 FLG.	4 FLG.	5 FLG.	6 FLG.	
OUTLET PIPE SIZE	2 1/2 FLG.	2 1/2 FLG.	3 FLG.	4 FLG.	4 FLG.	5 FLG.	6 FLG.	
VALVE SIZE	ITEM	VALVE SIZE AND OVERALL LOCATION						
1/2"	A	3/4						
	B	70 7/16	70 15/16	72 7/8	86 9/16	88 1/4	88	89 3/4
	C	20 5/16	20 9/16	21 9/16	24 1/16	25 9/16	27 9/16	29 9/16
	D	75 3/4	76 1/4	78 3/16	91 7/8	93 9/16	93 5/16	95 1/16
	E	33 7/16	33 15/16	35 7/8	36 11/16	38 3/8	38 1/8	39 7/8
3/4"	A	1						
	B	70 1/2	71	72 15/16	86 5/8	88 5/16	88 1/16	89 13/16
	C	21 5/16	21 9/16	22 9/16	25 1/16	26 9/16	28 9/16	30 9/16
	D	75 3/4	76 1/4	78 3/16	91 7/8	93 9/16	93 5/16	95 1/16
	E	33 1/2	34	35 15/16	36 3/4	38 7/16	38 3/16	39 15/16
1"	A	1 1/4						
	B	69 13/16	70 5/16	72 1/4	85 15/16	87 5/8	87 3/8	89 1/8
	C	22 1/8	22 3/8	23 3/8	25 7/8	27 3/8	29 3/8	31 3/8
	D	75 3/4	76 1/4	78 3/16	91 7/8	93 9/16	93 5/16	95 1/16
	E	32 13/16	33 5/16	35 1/4	36 1/16	37 3/4	37 1/2	39 1/4
1 1/4"	A	1 1/2						
	B	70 7/8	71 3/8	73 5/16	87	88 11/16	88 7/16	90 3/16
	C	21 7/16	21 11/16	22 11/16	25 3/16	26 11/16	28 11/16	30 11/16
	D	75 3/4	76 1/4	78 3/16	91 7/8	93 9/16	93 5/16	95 1/16
	E	33 7/8	34 3/8	36 5/16	37 1/8	38 13/16	38 9/16	40 5/16
1 1/2"	A	2						
	B	70 7/8	71 3/8	73 5/16	87	88 11/16	88 7/16	90 3/16
	C	22 1/16	22 5/16	23 5/16	25 13/16	27 5/16	29 5/16	31 5/16
	D	76 1/2	77	78 15/16	92 5/8	94 5/16	94 1/16	95 13/16
	E	33 7/8	34 3/8	36 5/16	37 1/8	38 13/16	38 9/16	40 5/16
2"	A	2 1/2						
	B	71 5/16	71 13/16	73 3/4	87 7/16	89 1/8	88 7/8	90 5/8
	C	24 1/4	24 1/2	25 1/2	28	29 1/2	31 1/2	33 1/2
	D	78 3/16	78 11/16	80 5/8	94 5/16	96	95 3/4	97 1/2
	E	34 5/16	34 13/16	36 3/4	37 9/16	39 1/4	39	40 3/4
2 1/2"	A	3						
	B	64 9/16	65 1/16	67	80 11/16	82 3/8	82 1/8	83 7/8
	C	20 1/4	20 1/2	21 1/2	24	25 1/2	27 1/2	29 1/2
	D	78 15/16	79 7/16	81 3/8	95 1/16	96 3/4	96 1/2	98 1/4
	E	27 9/16	28 1/16	30	30 13/16	32 1/2	32 1/4	34
3"	A	4						
	B	N/A	67 5/8	69 9/16	83 1/4	84 15/16	84 11/16	86 7/16
	C	N/A	22 5/16	23 5/16	25 13/16	27 5/16	29 5/16	31 5/16
	D	N/A	81 5/16	83 1/4	96 15/16	98 5/8	98 3/8	100 1/8
	E	N/A	30 5/8	32 9/16	33 3/8	35 1/16	34 13/16	36 9/16
4"	A	6						
	B	N/A	N/A	71 9/16	85 1/4	86 15/16	86 11/16	88 7/16
	C	N/A	N/A	27 3/16	29 11/16	31 3/16	33 3/16	35 3/16
	D	N/A	N/A	85 1/4	98 15/16	100 5/8	100 3/8	102 1/8
	E	N/A	N/A	34 9/16	35 3/8	37 1/16	36 13/16	38 9/16
5"	A	6						
	B	N/A	N/A	N/A	85 1/4	86 15/16	86 11/16	88 7/16
	C	N/A	N/A	N/A	33 5/16	34 13/16	36 13/16	38 13/16
	D	N/A	N/A	N/A	98 15/16	100 5/8	100 3/8	102 1/8
	E	N/A	N/A	N/A	35 3/8	37 1/16	36 13/16	38 9/16



NOTES:

1/ DIMENSIONS IN INCHES, AND SUBJECT TO CHANGE WITHOUT NOTICE.

2/ DIM 'B', 'C', 'D', 'E' ARE TO BE APPROXIMATED ONLY, CONSULT FACTORY FOR TIGHT DIMENSIONS.

Ace Heaters, LLC
www.aceheaters.com

This document contains proprietary information from AHS, LLC. Do not reproduce or distribute without prior written consent of AHS, LLC.	ASME Section VIII Div 1: 2015 Ed.	A.I:
	Design Pressure: 150 psig Test Pressure: 195 psig Max Design Temperature: 370°F	
SCALE: NA	Filename: SIHDW - COVER	SHEET 2 OF 2
Dwg By: JL	Orig Date: 12/30/15	Rev Date:
MINIPACK SYSTEM - HORIZONTAL - DW STEAM - PNEUMATIC VALVE PACKAGE - DUAL UNIT ON DUAL RACK		
Dwg #: SIHDWSA-2-DR-DIM	SO:	REV 01