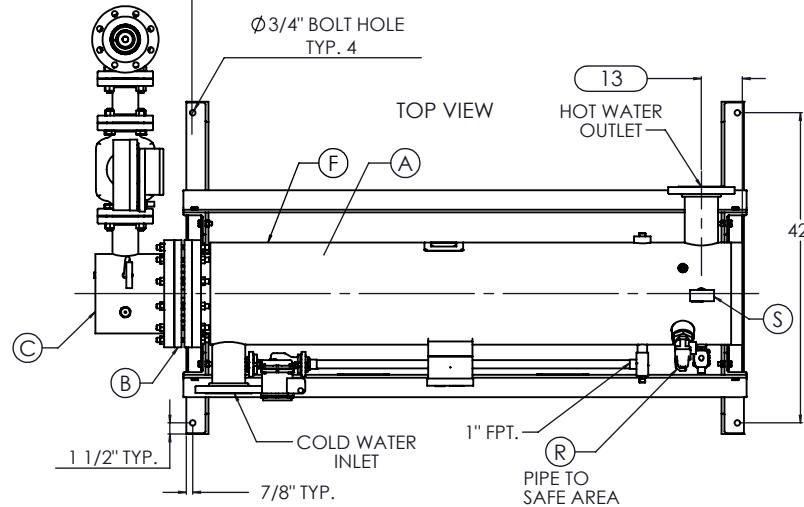
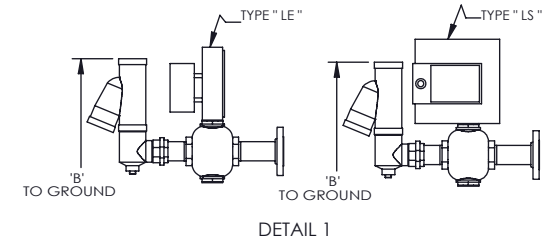
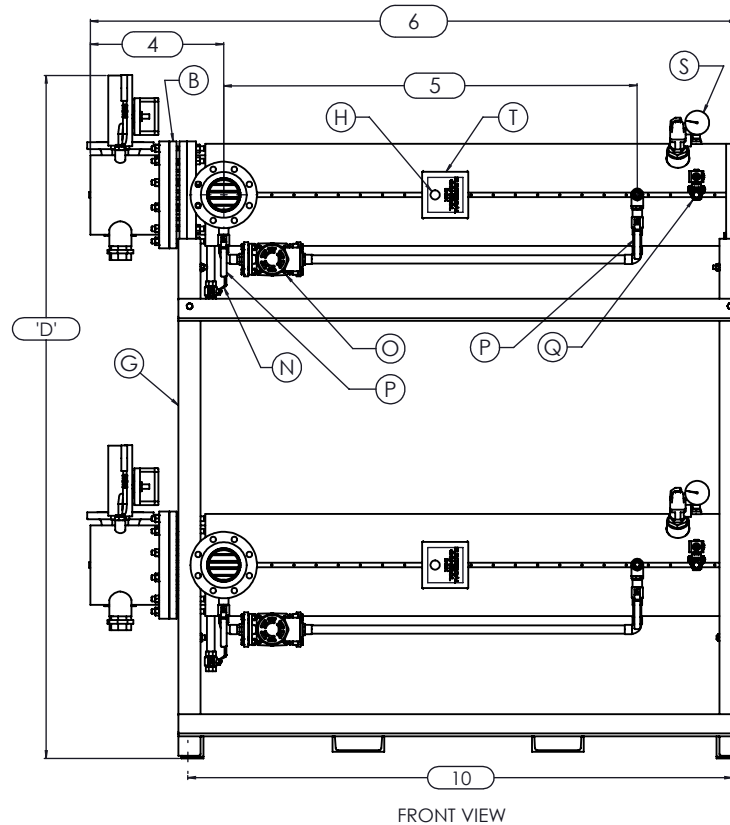
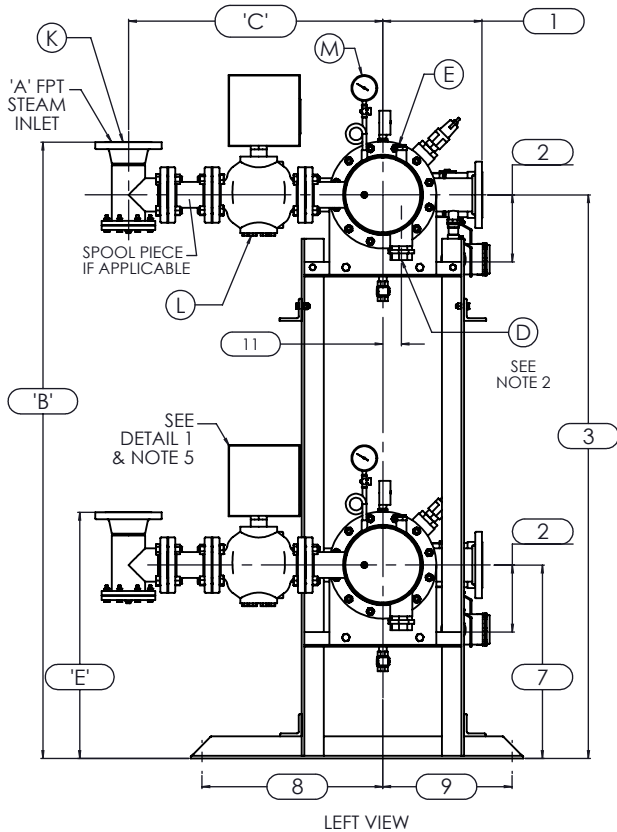


CLEARANCE FOR BUNDLE REMOVAL FROM SHELL FLANGE (12)



- NOTES:
- REFER TO PRODUCT SPECIFICATION FOR DESCRIPTION OF LETTERED ITEMS.
  - CONDENSATE: CONDENSATE IS TO BE PIPED FROM HEATER WITHOUT LIFTS TO A VENTED RECEIVER OR DRAIN BELOW THE ELEVATION OF THE HEATER'S CONDENSATE OUTLET.
  - INSTALLATION: ALL COMPONENTS SHOWN HERE ARE PREWIRED & PREPARED BY ACE HEATERS. CUSTOMER WILL ONLY NEED TO PLUMB WATER TO BE HEATED, PIPE STEAM AND CONDENSATE LINES, AND BRING ELECTRICITY TO UNIT.
  - DIMENSIONS ARE SUBJECT TO CHANGE. CONSULT FACTORY FOR TIGHT DIMENSIONS.
  - THIS CONFIGURATION CHANGES FOR VALVE SIZE 1/2" TO 2". SEE DETAIL 1 FOR REFERENCE. APPROX. EMPTY WT:



	CERTIFIED BY <b>Ace Heaters, LLC</b> www.aceheaters.com
	MAXIMUM ALLOWABLE WORKING PRESSURE <b>SHELL</b> _150_ PSI @ _210_ °F <b>TUBES</b> _150_ PSI @ _370_ °F <b>MIN. D.M.T.</b> _0_ °F @ _150_ PSI <b>S/N</b> _____ <b>YEAR BUILT</b> _____
<b>MODEL</b> _____ <b>CAPACITY</b> _____ <b>GAL SA.</b> _____ <b>JOB NO.</b> _____ <b>XXX</b>	

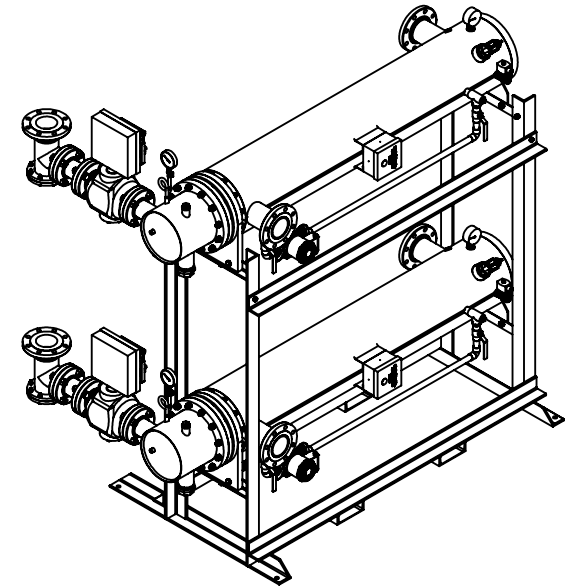
**Ace Heaters, LLC**  
www.aceheaters.com

This document contains proprietary information from AHS, LLC. Do not reproduce or distribute without prior written consent of AHS, LLC.	ASME Section VIII Div 1: 2015 Ed. Design Pressure: 150 psig Test Pressure: 195 psig Max Design Temperature: 370°F	<b>A.I.:</b> _____
	SCALE: NA Filename: SIHDW - COVER Dwg By: JL Orig Date: 12/30/15 Rev Date: _____ Checked By: _____	SHEET 1 OF 2

<b>MINIPACK SYSTEM - HORIZONTAL - DW</b> STEAM - WARREN ELECT. VALVE PACKAGE - DUAL UNIT ON DUAL RACK		
Dwg #:	SIHDWSE-2-DR-WARREN	ISO: _____
REV	01	

SIHDWSE-2-DR, DW - STEAM - WARREN ELECTRIC VALVE PACKAGE - DUAL UNIT ON RACK								
	MP SIZE	5	6	8	10	12	14	16
ITEMS	1	10	10 1/2	11 1/2	13 1/2	14 1/2	15 1/2	16 1/2
	2	7 11/16	8 3/16	10 1/8	10 13/16	12 1/2	12 1/4	14
	3	59 15/16	60 7/16	62 3/8	76 1/16	77 3/4	77 1/2	79 1/4
	4	13 7/8	14 3/8	15 7/8	17 5/8	23 9/16	24 13/16	28 9/16
	5	55	54 1/2	55 1/4	56	54 1/2	63	66 3/4
	6	80 3/16	81 5/16	83 9/16	87 1/8	94 7/16	104 1/16	110 15/16
	7	22 15/16	23 7/16	25 3/8	26 3/16	27 7/8	27 5/8	29 3/8
	8	26 1/2	26 1/2	26 1/2	26 1/2	26 1/2	26 1/2	26 1/2
	9	15 1/2	15 1/2	15 1/2	15 1/2	15 1/2	15 1/2	15 1/2
	10	68 1/4	69 3/8	70 3/8	71 7/8	74 5/16	82 15/16	82 15/16
	11	1 3/8	1 1/2	2 1/16	2 1/2	3 1/16	3 1/8	3 1/4
	12	64	64	64	64	64	75	80
	13	4 13/16	4 13/16	5 15/16	5 11/16	8 1/8	7 1/4	7 3/8
INLET PIPE SIZE	2 1/2 FLG.	2 1/2 FLG.	3 FLG.	4 FLG.	4 FLG.	5 FLG.	6 FLG.	
OUTLET PIPE SIZE	2 1/2 FLG.	2 1/2 FLG.	3 FLG.	4 FLG.	4 FLG.	5 FLG.	6 FLG.	
VALVE SIZE AND OVERALL LOCATION								
VALVE SIZE	ITEM							
1/2"	'A'	3/4						
	'B'	70 7/16	70 15/16	72 7/8	86 9/16	88 1/4	88	89 3/4
	'C'	20 7/16	20 11/16	21 11/16	24 3/16	25 11/16	27 11/16	29 11/16
	'D'	73 3/4	74 1/4	76 3/16	89 7/8	91 9/16	91 5/16	93 1/16
	'E'	33 7/16	33 15/16	35 7/8	36 11/16	38 3/8	38 1/8	39 7/8
3/4"	'A'	1						
	'B'	70 1/2	71	72 15/16	86 5/8	88 5/16	88 1/16	89 13/16
	'C'	20 7/16	20 11/16	21 11/16	24 3/16	25 11/16	27 11/16	29 11/16
	'D'	73 3/4	74 1/4	76 3/16	89 7/8	91 9/16	91 5/16	93 1/16
	'E'	33 1/2	34	35 15/16	36 3/4	38 7/16	38 3/16	39 15/16
1"	'A'	1 1/4						
	'B'	69 13/16	70 5/16	72 1/4	85 15/16	87 5/8	87 3/8	89 1/8
	'C'	22 1/4	22 1/2	23 1/2	26	27 1/2	29 1/2	31 1/2
	'D'	73 3/4	74 1/4	76 3/16	89 7/8	91 9/16	91 5/16	93 1/16
	'E'	32 13/16	33 5/16	35 1/4	36 1/16	37 3/4	37 1/2	39 1/4
1 1/4"	'A'	1 1/2						
	'B'	70 7/8	71 3/8	73 5/16	87	88 11/16	88 7/16	90 3/16
	'C'	23 1/16	23 5/16	24 5/16	26 13/16	28 5/16	30 5/16	32 5/16
	'D'	74 3/8	74 7/8	76 13/16	90 1/2	92 3/16	91 15/16	93 11/16
	'E'	33 7/8	34 3/8	36 5/16	37 1/8	38 13/16	38 9/16	40 5/16
1 1/2"	'A'	2						
	'B'	70 7/8	71 3/8	73 5/16	87	88 11/16	88 7/16	90 3/16
	'C'	24 7/8	25 1/8	26 1/8	28 5/8	30 1/8	32 1/8	34 1/8
	'D'	74 3/8	74 7/8	76 13/16	90 1/2	92 3/16	91 15/16	93 11/16
	'E'	33 7/8	34 3/8	36 5/16	37 1/8	38 13/16	38 9/16	40 5/16
2"	'A'	2 1/2						
	'B'	71 5/16	71 13/16	73 3/4	87 7/16	89 1/8	88 7/8	90 5/8
	'C'	26 13/16	27 1/16	28 1/16	30 9/16	32 1/16	34 1/16	36 1/16
	'D'	74 3/8	74 7/8	76 13/16	90 1/2	92 3/16	91 15/16	93 11/16
	'E'	34 5/16	34 13/16	36 3/4	37 9/16	39 1/4	39	40 3/4
2 1/2"	'A'	3						
	'B'	64 9/16	65 1/16	67	80 11/16	82 3/8	82 1/8	83 7/8
	'C'	23 7/8	24 1/8	25 1/8	27 5/8	29 1/8	31 1/8	33 1/8
	'D'	76 3/16	76 11/16	78 5/8	92 5/16	94	93 3/4	95 1/2
	'E'	27 9/16	28 1/16	30	30 13/16	32 1/2	32 1/4	34
3"	'A'	4						
	'B'	N/A	67 5/8	69 9/16	83 1/4	84 15/16	84 11/16	86 7/16
	'C'	N/A	24 15/16	25 15/16	28 7/16	29 15/16	31 15/16	33 15/16
	'D'	N/A	76 11/16	78 5/8	92 5/16	94	93 3/4	95 1/2
	'E'	N/A	30 5/8	32 9/16	33 3/8	35 1/16	34 13/16	36 9/16
4"	'A'	6						
	'B'	N/A	N/A	71 9/16	85 1/4	86 15/16	86 11/16	88 7/16
	'C'	N/A	N/A	32 15/16	35 7/16	36 15/16	38 15/16	40 15/16
	'D'	N/A	N/A	77 5/8	91 5/16	93	92 3/4	94 1/2
	'E'	N/A	N/A	34 9/16	35 3/8	37 1/16	36 13/16	38 9/16
5"	'A'	6						
	'B'	N/A	N/A	N/A	85 1/4	86 15/16	86 11/16	88 7/16
	'C'	N/A	N/A	N/A	35 7/16	36 15/16	38 15/16	40 15/16
	'D'	N/A	N/A	N/A	91 5/16	93	92 3/4	94 1/2
	'E'	N/A	N/A	N/A	35 3/8	37 1/16	36 13/16	38 9/16

ISOMETRIC VIEW



## NOTES:

- 1/ DIMENSIONS IN INCHES, AND SUBJECT TO CHANGE WITHOUT NOTICE.
- 2/ DIM 'B', 'C', 'D', 'E' ARE TO BE APPROXIMATED ONLY, CONSULT FACTORY FOR TIGHT DIMENSIONS.

## Ace Heaters, LLC

www.aceheaters.com

This document contains proprietary information from AHS, LLC. Do not reproduce or distribute without prior written consent of AHS, LLC.		ASME Section VIII Div 1: 2015 Ed. Design Pressure: 150 psig Test Pressure: 195 psig Max Design Temperature: 370°F	A.I:
SCALE: NA	Filename: SIHDW - COVER	SHEET 2 OF 2	
Dwg By: JL	Orig Date: 12/30/15	Rev Date:	Checked By:
<b>MINIPACK SYSTEM - HORIZONTAL - DW</b>			
STEAM - WARREN ELECT. VALVE PACKAGE - DUAL UNIT ON DUAL RACK			
Dwg #: SIHDWSE-2-DR-WARREN-DIM	SO:	REV 01	