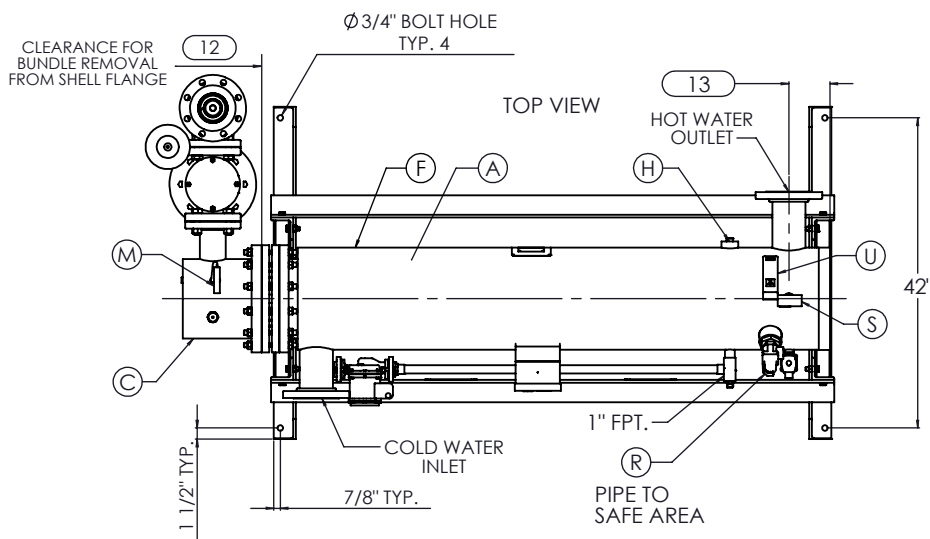
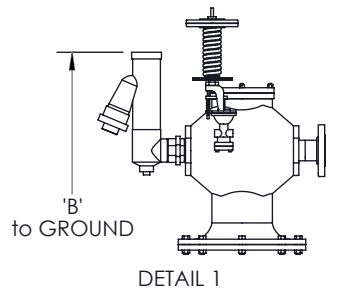


ISOMETRIC VIEW

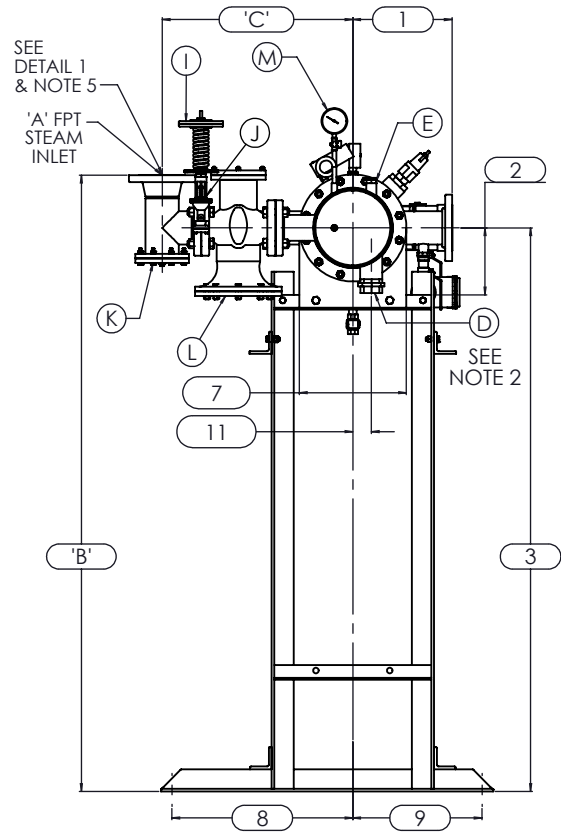


TOP VIEW

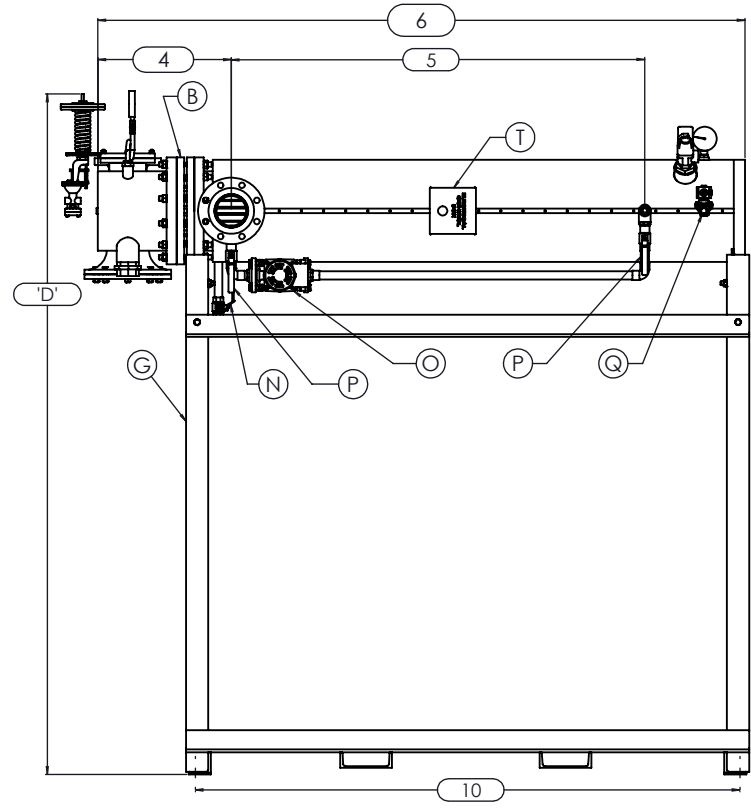


DETAIL 1

- NOTES:
- REFER TO PRODUCT SPECIFICATION FOR DESCRIPTION OF LETTERED ITEMS.
 - CONDENSATE: CONDENSATE IS TO BE PIPED FROM HEATER WITHOUT LIFTS TO A VENTED RECEIVER OR DRAIN BELOW THE ELEVATION OF THE HEATER'S CONDENSATE OUTLET.
 - INSTALLATION: ALL COMPONENTS SHOWN HERE ARE PREWIRED & PREPARED BY ACE HEATERS. CUSTOMER WILL ONLY NEED TO PLUMB WATER TO BE HEATED, PIPE STEAM AND CONDENSATE LINES, AND BRING ELECTRICITY TO UNIT.
 - DIMENSIONS ARE SUBJECT TO CHANGE. CONSULT FACTORY FOR TIGHT DIMENSIONS.
 - THIS CONFIGURATION CHANGES FOR VALVE SIZE 1/2" TO 2". SEE DETAIL 1 FOR REFERENCE. APPROX. EMPTY WT:



LEFT VIEW



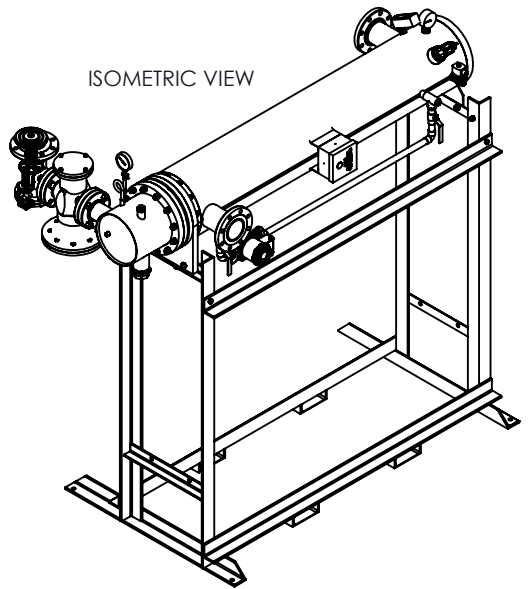
FRONT VIEW

	CERTIFIED BY Ace Heaters, LLC www.aceheaters.com	
	MAXIMUM ALLOWABLE WORKING PRESSURE SHELL ___150___ PSI @ ___210___°F TUBES ___150___ PSI @ ___370___°F MIN. D.M.T. ___0___ °F @ ___150___ PSI S/N _____ YEAR BUILT _____	
	MODEL _____ CAPACITY _____ GAL SA. _____ JOB NO. _____ XXX _____	

Ace Heaters, LLC www.aceheaters.com		
This document contains proprietary information from AHS, LLC. Do not reproduce or distribute without prior written consent of AHS, LLC.	ASME Section VIII Div 1: 2015 Ed. Design Pressure: 150 psig Test Pressure: 195 psig Max Design Temperature: 370°F	A.I.: _____
SCALE: NA Dwg By: JL	Filename: SIHDW - COVER Orig Date: 12/30/15 Rev Date: _____	SHEET 1 OF 2 Checked By: _____
MINIPACK SYSTEM - HORIZONTAL - DW STEAM - PILOT VALVE PACKAGE - SINGLE UNIT ON DUAL RACK		
Dwg #: SIHDWSP-1-DR		[SO] _____ REV 01

SIHDWSP-1-DR, DW - STEAM - PILOT VALVE PACKAGE - SINGLE UNIT ON RACK

		MP SIZE	5	6	8	10	12	14	16
DIMENSION	ITEMS	1	10	10 1/2	11 1/2	13 1/2	14 1/2	15 1/2	16 1/2
		2	7 11/16	8 3/16	10 1/8	10 13/16	12 1/2	12 1/4	14
		3	59 15/16	60 7/16	62 3/8	76 1/16	77 3/4	77 1/2	79 1/4
		4	13 7/8	14 3/8	15 7/8	17 5/8	23 9/16	24 13/16	28 9/16
		5	55	54 1/2	55 1/4	56	54 1/2	63	66 3/4
		6	80 3/16	81 5/16	83 9/16	87 1/8	94 7/16	104 1/16	110 15/16
		7	8 3/4	9 7/8	11 7/8	14 1/2	16 5/8	18 1/2	20
		8	26 1/2	26 1/2	26 1/2	26 1/2	26 1/2	26 1/2	26 1/2
		9	15 1/2	15 1/2	15 1/2	15 1/2	15 1/2	15 1/2	15 1/2
		10	68 1/4	69 3/8	70 3/8	71 7/8	74 5/16	82 15/16	82 15/16
		11	1 3/8	1 1/2	2 1/16	2 1/2	3 1/16	3 1/8	3 1/4
		12	64	64	64	64	64	75	80
		13	4 13/16	4 13/16	5 15/16	5 11/16	8 1/8	7 1/4	7 3/8
INLET PIPE SIZE		2 1/2 FLG.	2 1/2 FLG.	3 FLG.	4 FLG.	4 FLG.	5 FLG.	6 FLG.	
OUTLET PIPE SIZE		2 1/2 FLG.	2 1/2 FLG.	3 FLG.	4 FLG.	4 FLG.	5 FLG.	6 FLG.	
VALVE SIZE	ITEM	VALVE SIZE AND OVERALL LOCATION							
1/2"	'A'	3/4							
	'B'	70 7/16	70 15/16	72 7/8	86 9/16	88 1/4	88	89 3/4	
	'C'	18 3/8	18 5/8	19 5/8	22 1/8	23 5/8	25 5/8	27 5/8	
	'D'	70 1/2	71	72 15/16	86 5/8	88 5/16	88 1/16	89 13/16	
3/4"	'A'	1							
	'B'	70 1/2	71	72 15/16	86 5/8	88 5/16	88 1/16	89 13/16	
	'C'	19 5/8	19 7/8	20 7/8	23 3/8	24 7/8	26 7/8	28 7/8	
	'D'	70 1/2	71	72 15/16	86 5/8	88 5/16	88 1/16	89 13/16	
1"	'A'	1 1/4							
	'B'	69 13/16	70 5/16	72 1/4	85 15/16	87 5/8	87 3/8	89 1/8	
	'C'	22 1/8	22 3/8	23 3/8	25 7/8	27 3/8	29 3/8	31 3/8	
	'D'	71 1/4	71 3/4	73 11/16	87 3/8	89 1/16	88 13/16	90 9/16	
1 1/4"	'A'	1 1/2							
	'B'	70 7/8	71 3/8	73 5/16	87	88 11/16	88 7/16	90 3/16	
	'C'	21 7/16	21 11/16	22 11/16	25 3/16	26 11/16	28 11/16	30 11/16	
	'D'	71 3/4	72 1/4	74 3/16	87 7/8	89 9/16	89 5/16	91 1/16	
1 1/2"	'A'	2							
	'B'	70 7/8	71 3/8	73 5/16	87	88 11/16	88 7/16	90 3/16	
	'C'	23 3/16	23 7/16	24 7/16	26 15/16	28 7/16	30 7/16	32 7/16	
	'D'	72	72 1/2	74 7/16	88 1/8	89 13/16	89 9/16	91 5/16	
2"	'A'	2 1/2							
	'B'	71 5/16	71 13/16	73 3/4	87 7/16	89 1/8	88 7/8	90 5/8	
	'C'	30 9/16	30 13/16	31 13/16	34 5/16	35 13/16	37 13/16	39 13/16	
	'D'	75 5/16	75 13/16	77 3/4	91 7/16	93 1/8	92 7/8	94 5/8	
2 1/2"	'A'	3							
	'B'	64 9/16	65 1/16	67	80 11/16	82 3/8	82 1/8	83 7/8	
	'C'	20 5/8	20 7/8	21 7/8	24 3/8	25 7/8	27 7/8	29 7/8	
	'D'	72 5/8	73 1/8	75 1/16	88 3/4	90 7/16	90 3/16	91 15/16	
3"	'A'	4							
	'B'	N/A	67 5/8	69 9/16	83 1/4	84 15/16	84 11/16	86 7/16	
	'C'	N/A	22 5/16	23 5/16	25 13/16	27 5/16	29 5/16	31 5/16	
	'D'	N/A	76 5/16	78 1/4	91 15/16	93 5/8	93 3/8	95 1/8	
4"	'A'	4							
	'B'	N/A	N/A	71 9/16	85 1/4	86 15/16	86 11/16	88 7/16	
	'C'	N/A	N/A	19 9/16	19 9/16	19 9/16	19 9/16	19 9/16	
	'D'	N/A	N/A	77 3/4	91 7/16	93 1/8	92 7/8	94 5/8	
5"	'A'	6							
	'B'	N/A	N/A	N/A	85 1/4	86 15/16	86 11/16	88 7/16	
	'C'	N/A	N/A	N/A	22 13/16	22 13/16	22 13/16	22 13/16	
	'D'	N/A	N/A	N/A	91 15/16	93 5/8	93 3/8	95 1/8	



Ace Heaters, LLC www.aceheaters.com		
This document contains proprietary information from AHS, LLC. Do not reproduce or distribute without prior written consent of AHS, LLC.	ASME Section VIII Div 1: 2015 Ed. Design Pressure: 150 psig Test Pressure: 195 psig Max Design Temperature: 370°F	A.I:
SCALE: NA	Filename: SIHDW - COVER	SHEET 2 OF 2
Dwg By: JL	Orig Date: 12/30/15	Rev Date:
MINIPACK SYSTEM - HORIZONTAL - DW STEAM - PILOT VALVE PACKAGE - SINGLE UNIT ON DUAL RACK		
Dwg #: SIHDWSP-1-DR-DIM	\$O:	REV 01