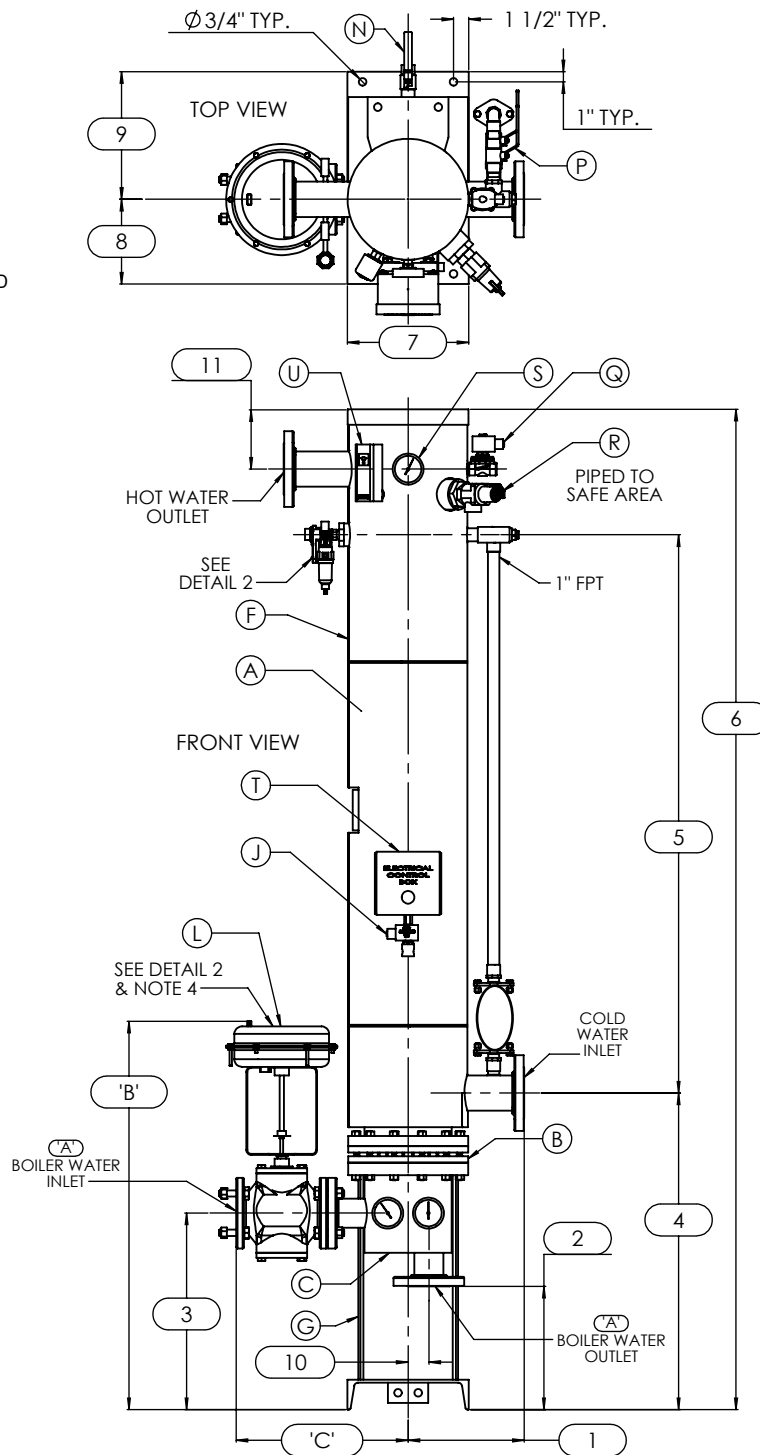
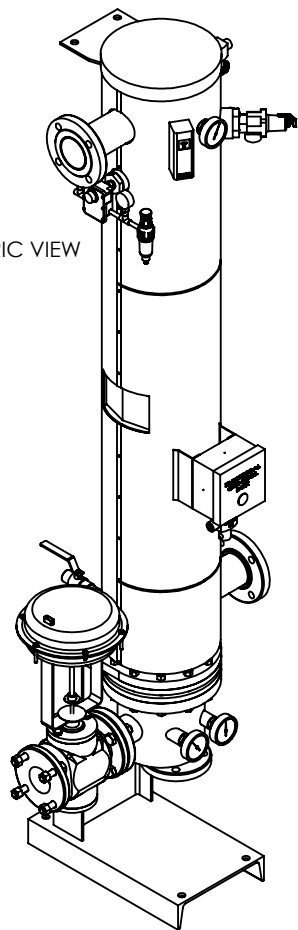


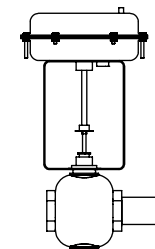
ISOMETRIC VIEW



NOTES:

1. REFER TO PRODUCT SPECIFICATION FOR DESCRIPTION OF LETTERED ITEMS.
2. INSTALLATION:
ALL COMPONENTS SHOWN HERE ARE PREWIRED & PREPIPED BY ACE HEATERS. CUSTOMER WILL ONLY NEED TO PLUMB WATER TO BE HEATED, PLUMB BOILER WATER, HOOKUP AIR TO AIR FILTER-PRESSURE REGULATOR, AND BRING ELECTRICITY TO UNIT.
3. DIMENSIONS ARE SUBJECT TO CHANGE. CONSULT FACTORY FOR TIGHT DIMENSIONS.
4. THIS CONFIGURATION CHANGES FOR VALVE SIZE 1/2" TO 2". SEE DETAIL 2 FOR REFERENCE.
5. ADD 6" SPOILER TO CAP INLET IF APPL.

APPROX. EMPTY WT:



DETAIL 2

| | | |
|------------------------------|---|------------------|
| | CERTIFIED BY <i>Ace Heaters, LLC</i> www.aceheaters.com | |
| | MAXIMUM ALLOWABLE WORKING PRESSURE | |
| | SHELL | 150 PSI @ 210 °F |
| | TUBES | 150 PSI @ 370 °F |
| | MIN. D.M.T. 0 °F @ 150 PSI | |
| S/N _____ YEAR BUILT _____ | | |
| MODEL _____ | | |
| CAPACITY _____ GAL SA. _____ | | |
| JOB NO. _____ | | |

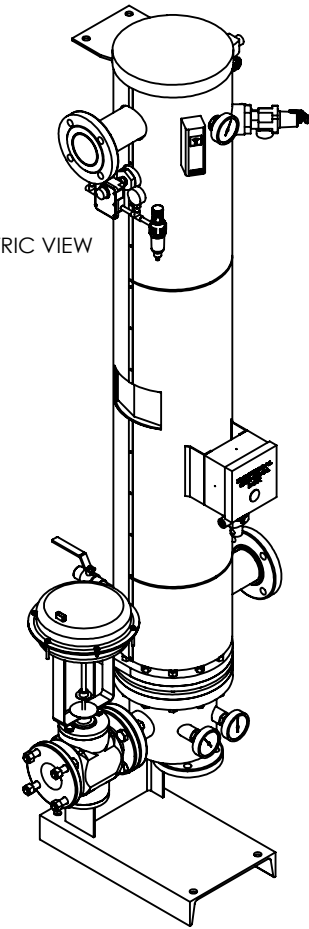
| | | |
|---|--|--------------------------------------|
| Ace Heaters, LLC www.aceheaters.com | | |
| This document contains proprietary information from AHS, LLC. Do not reproduce or distribute without prior written consent of AHS, LLC. | ASME Section VIII Div 1: 2015 Ed. Design Pressure: 150 psig Test Pressure: 195 psig Max Design Temperature: 370°F | A.I.: |
| SCALE: NA | Filename: SIVDW | SHEET 1 OF 1 |
| Dwg By: JL | Orig Date: 12/17/15 | Rev Date: _____ Checked By: _____ |
| MINIPACK SYSTEM - VERICAL DW Water 2W - Pneumatic Operated Valve Package | | |
| Dwg #: SIVDWVA-2W | SO: _____ | REV 1 |

SIVDWWA, 2W - WATER - PNEUMATIC OPERATED VALVE PACKAGE SIZE AND LOCATION

| MP SIZE | | 5 | 6 | 8 | 10 | 12 | 14 | 16 |
|--|----|------------|------------|---------|----------|---------|----------|---------|
| ITEMS D I M E S I O N S | 1 | 10 | 10 1/2 | 11 1/2 | 13 1/2 | 14 1/2 | 15 1/2 | 16 1/2 |
| | 2 | 10 3/16 | 12 11/16 | 12 3/16 | 16 5/8 | 18 1/2 | 16 15/16 | 17 7/16 |
| | 3 | 16 15/16 | 19 5/16 | 19 7/16 | 23 3/4 | 22 1/2 | 23 15/16 | 24 7/16 |
| | 4 | 27 9/16 | 30 9/16 | 31 5/16 | 35 5/8 | 39 3/8 | 41 5/8 | 43 7/8 |
| | 5 | 55 | 54 1/2 | 55 1/4 | 56 | 54 1/2 | 63 | 66 3/4 |
| | 6 | 93 7/8 | 97 3/8 | 98 5/8 | 105 1/4 | 110 | 121 | 127 |
| | 7 | 12 | 12 | 12 | 18 | 18 | 18 | 18 |
| | 8 | 11 1/16 | 10 3/8 | 9 1/4 | 13 11/16 | 12 | 15 1/4 | 13 1/2 |
| | 9 | 9 15/16 | 10 5/8 | 11 3/4 | 13 5/16 | 15 | 14 3/4 | 16 1/2 |
| | 10 | 1 3/8 | 1 1/2 | 2 1/16 | 2 1/2 | 3 1/16 | 3 1/8 | 3 1/4 |
| | 11 | 4 13/16 | 4 13/16 | 5 9/16 | 7 15/16 | 7 15/16 | 7 1/16 | 7 3/16 |
| INLET PIPE SIZE | | 2 1/2 FLG. | 2 1/2 FLG. | 3 FLG. | 4 FLG. | 4 FLG. | 5 FLG. | 6 FLG. |
| OUTLET PIPE SIZE | | 2 1/2 FLG. | 2 1/2 FLG. | 3 FLG. | 4 FLG. | 4 FLG. | 5 FLG. | 6 FLG. |

| 'A' VALVE SIZE | ITEM | VALVE SIZE AND OVERALL LOCATION | | | | | | |
|----------------|------|---------------------------------|----------|----------|----------|----------|----------|----------|
| | | | | | | | | |
| 1/2" | 'B' | 32 3/4 | 35 1/8 | 35 1/4 | 39 9/16 | 38 5/16 | 39 3/4 | 40 1/4 |
| | 'C' | 16 1/16 | 16 5/16 | 17 5/16 | 19 13/16 | 21 5/16 | 23 5/16 | 25 5/16 |
| 3/4" | 'B' | 32 3/4 | 35 1/8 | 35 1/4 | 39 9/16 | 38 5/16 | 39 3/4 | 40 1/4 |
| | 'C' | 17 1/16 | 17 5/16 | 18 5/16 | 20 13/16 | 22 5/16 | 24 5/16 | 26 5/16 |
| 1" | 'B' | 32 3/4 | 35 1/8 | 35 1/4 | 39 9/16 | 38 5/16 | 39 3/4 | 40 1/4 |
| | 'C' | 17 1/16 | 17 5/16 | 18 5/16 | 20 13/16 | 22 5/16 | 24 5/16 | 26 5/16 |
| 1 1/4" | 'B' | 32 3/4 | 35 1/8 | 35 1/4 | 39 9/16 | 38 5/16 | 39 3/4 | 40 1/4 |
| | 'C' | 17 1/16 | 17 5/16 | 18 5/16 | 20 13/16 | 22 5/16 | 24 5/16 | 26 5/16 |
| 1 1/2" | 'B' | 33 1/2 | 35 7/8 | 36 | 40 5/16 | 39 1/16 | 40 1/2 | 41 |
| | 'C' | 17 1/16 | 17 5/16 | 18 5/16 | 20 13/16 | 22 5/16 | 24 5/16 | 26 5/16 |
| 2" | 'B' | 35 3/16 | 37 9/16 | 37 11/16 | 42 | 40 3/4 | 42 3/16 | 42 11/16 |
| | 'C' | 18 7/16 | 18 11/16 | 19 11/16 | 22 3/16 | 23 11/16 | 25 11/16 | 27 11/16 |
| 2 1/2" | 'B' | 35 15/16 | 38 5/16 | 38 7/16 | 42 3/4 | 41 1/2 | 42 15/16 | 43 7/16 |
| | 'C' | 15 3/4 | 16 | 17 | 19 1/2 | 21 | 23 | 25 |
| 3" | 'B' | N/A | 40 3/16 | 40 5/16 | 44 5/8 | 43 3/8 | 44 13/16 | 45 5/16 |
| | 'C' | | 17 | 18 | 20 1/2 | 22 | 24 | 26 |
| 4" | 'B' | N/A | N/A | 42 5/16 | 46 5/8 | 45 3/8 | 46 13/16 | 47 5/16 |
| | 'C' | | | 21 | 23 1/2 | 25 | 27 | 29 |
| 5" | 'B' | N/A | N/A | N/A | 46 5/8 | 45 3/8 | 46 13/16 | 47 5/16 |
| | 'C' | | | | 26 1/4 | 27 3/4 | 29 3/4 | 31 3/4 |

ISOMETRIC VIEW



NOTES:

- 1/ DIMENSIONS IN INCHES, AND SUBJECT TO CHANGE WITHOUT NOTICE.
- 2/ DIM 'B', 'C' ARE TO BE APPROXIMATED ONLY, CONSULT FACTORY FOR TIGHT DIMENSIONS.

| | | |
|---|--|----------------------------|
| Ace Heaters, LLC www.aceheaters.com | | |
| This document contains proprietary information from AHS, LLC. Do not reproduce or distribute without prior written consent of AHS, LLC. | ASME Section VIII Div 1: 2015 Ed. Design Pressure: 150 psig Test Pressure: 195 psig Max Design Temperature: 370°F | A.I. |
| SCALE: NA | Filename: SIVDWW | SHEET 1 OF 1 |
| Dwg By: JL | Orig Date: 12/17/15 | Rev Date: Checked By: |
| MINIPACK SYSTEM - VERTICAL DW Water 2W - Pneumatic Operated Valve Package | | |
| Dwg #: SIVDWWA-2W- DIM | SO: | REV 1 |