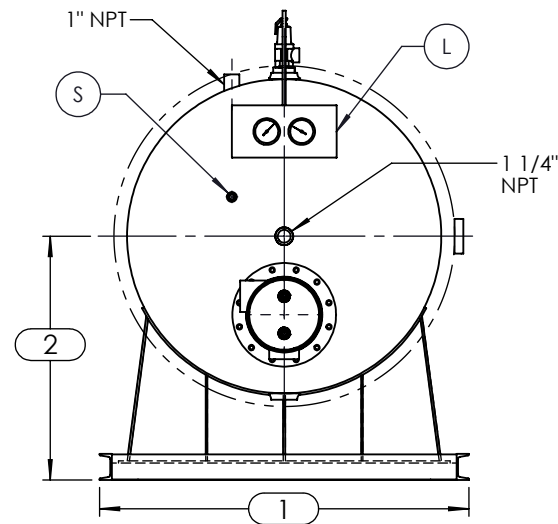
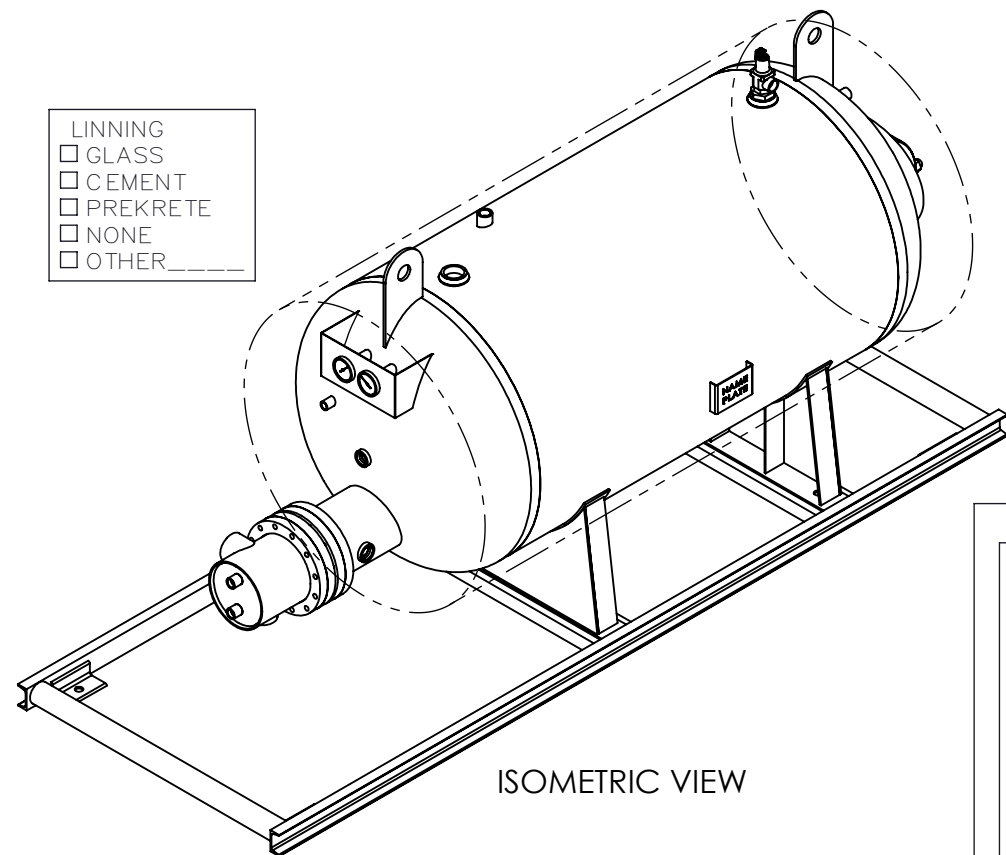


Shell Sizes	DIMENSIONS in INCHES					
	1	2	3	4	5	6
1802	20.32	18.41	18	34	62	3
1803				46	74	
1804				58	86	
1805				70	98	
2404	30.32	21.41	24	61	95	3
2405				73	107	
2406				85	119	
2407				97	131	
3004	36.42	24.92	30	64	100	3
3005				76	112	
3006				88	124	
3007				100	136	
3604	42.32	27.92	36	67	106	3
3605				79	118	
3606				91	130	
3607				103	142	
3608				115	154	
4204	48.32	30.92	42	70	109	3
4205				82	121	
4206				94	133	
4207				106	145	
4208				118	157	
4804	54.32	33.92	48	73	112	3
4805				85	124	
4806				97	136	
4807				109	148	
4808				121	160	
5405	60.66	37.26	54	88	127	4
5406				100	139	
5407				112	131	
5408				124	163	
6005	66.66	40.26	60	91	130	4
6006				103	142	
6007				115	154	
6008				127	166	
6009				139	178	
6605	72.66	43.26	66	94	133	4
6606				106	145	
6607				118	157	
6608				130	169	
6609				144	181	
7205	78.66	46.26	72	97	136	4
7206				109	148	
7207				121	160	
7208				133	172	
7209				147	184	



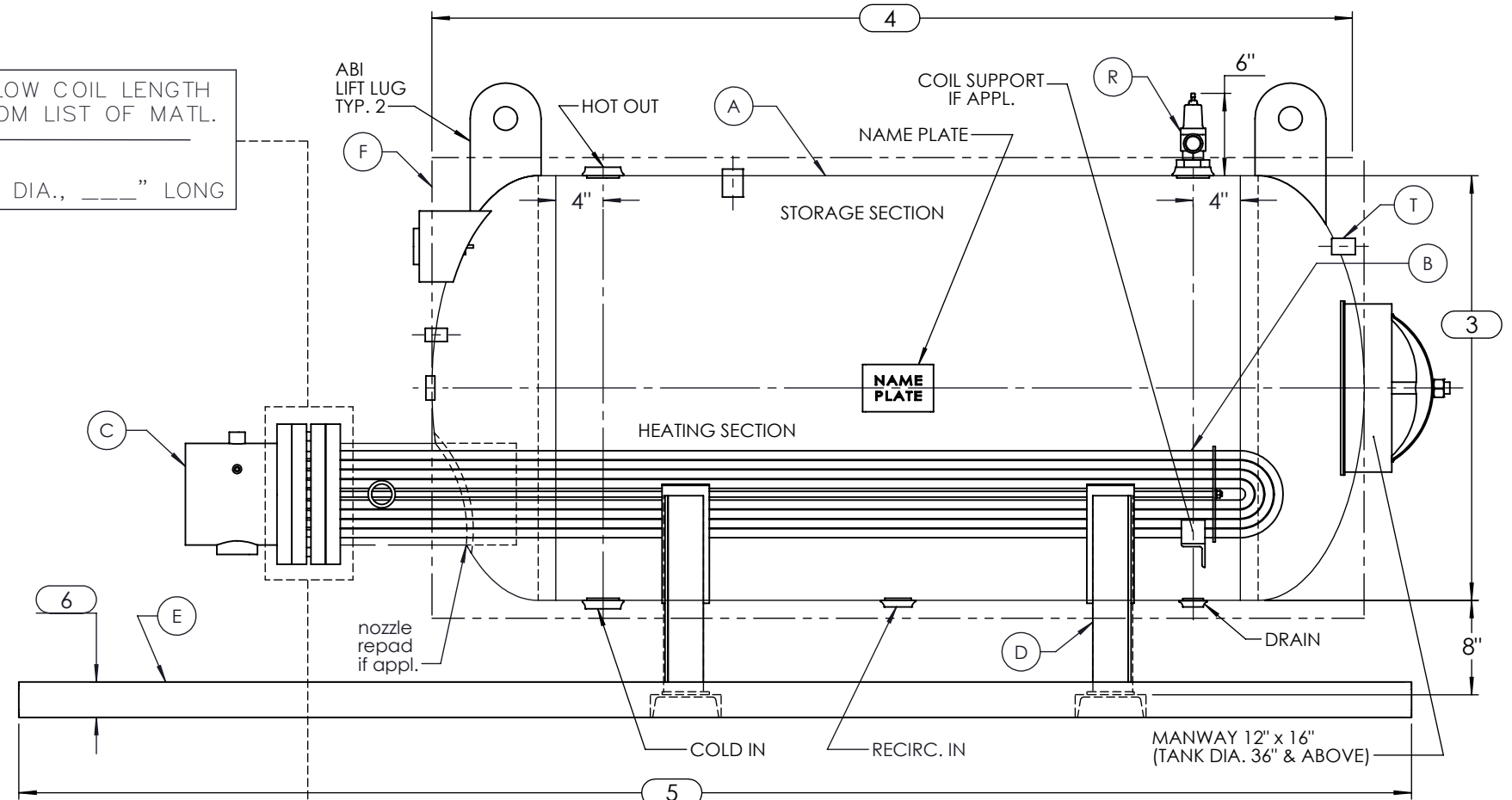
FRONT VIEW

- LINNING
- GLASS
  - CEMENT
  - PREKRETE
  - NONE
  - OTHER \_\_\_\_\_



ISOMETRIC VIEW

ALLOW COIL LENGTH FROM LIST OF MATL.  
 \_\_\_\_\_ " DIA., \_\_\_\_\_ " LONG

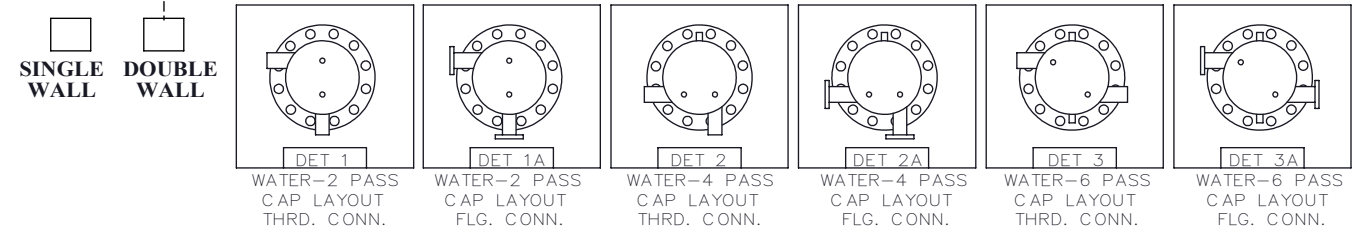


SIDE VIEW

NOTES:

- REFER TO "LIST OF MATERIALS" FOR DESCRIPTION OF LETTERED ITEMS.
- ALL COMPONENTS SHOWN ARE PREWIRED AND/OR PREPARED BY ACE HEATERS. CUSTOMER NEEDS ONLY TO PLUMB WATER TO BE HEATED, STEAM AND CONDENSATE LINES, AND BRING ELECTRICITY TO THE CONTROL BOX.
- ALL DIMENSIONS ARE IN INCHES AND SUBJECT TO CHANGE WITHOUT NOTICE.

- USE  DET 1 or  DET 1A  
 DET 2 or  DET 2A  
 DET 3 or  DET 3A



	CERTIFIED BY <b>Ace Heaters</b>	<b>ACE HEATERS</b>		
	MAXIMUM ALLOWABLE WORKING PRESSURE SHELL <u>150</u> PSI @ <u>390</u> °F TUBES <u>150</u> PSI @ <u>390</u> °F MIN. D.M.T. <u>0</u> °F @ <u>150</u> PSI S/N _____ YEAR BUILT _____	This document contains proprietary information from Ace Heaters. Do not reproduce or distribute without prior written consent of Ace Heaters.		ASME Section VIII Div 1: Design Pressure: 150 psig Test Pressure: 195 psig Max Design Temperature: 390°F
	MODEL _____ CAPACITY _____ GAL SA. _____ SQFT JOB NO. _____ XXX _____	SCALE: N/A	Filename: GHW-IJ	SHEET 1 OF 1
		Dwg By: VN	Orig Date: 3/11/09	Rev Date: 9/20/12
<b>Horizontal Unpackaged Storage Water Heater</b> <b>Water - Ins. - Jkt. - Skid - No Recirc.</b>				
Dwg #: GHW-IJ		SO:	REV. 1	