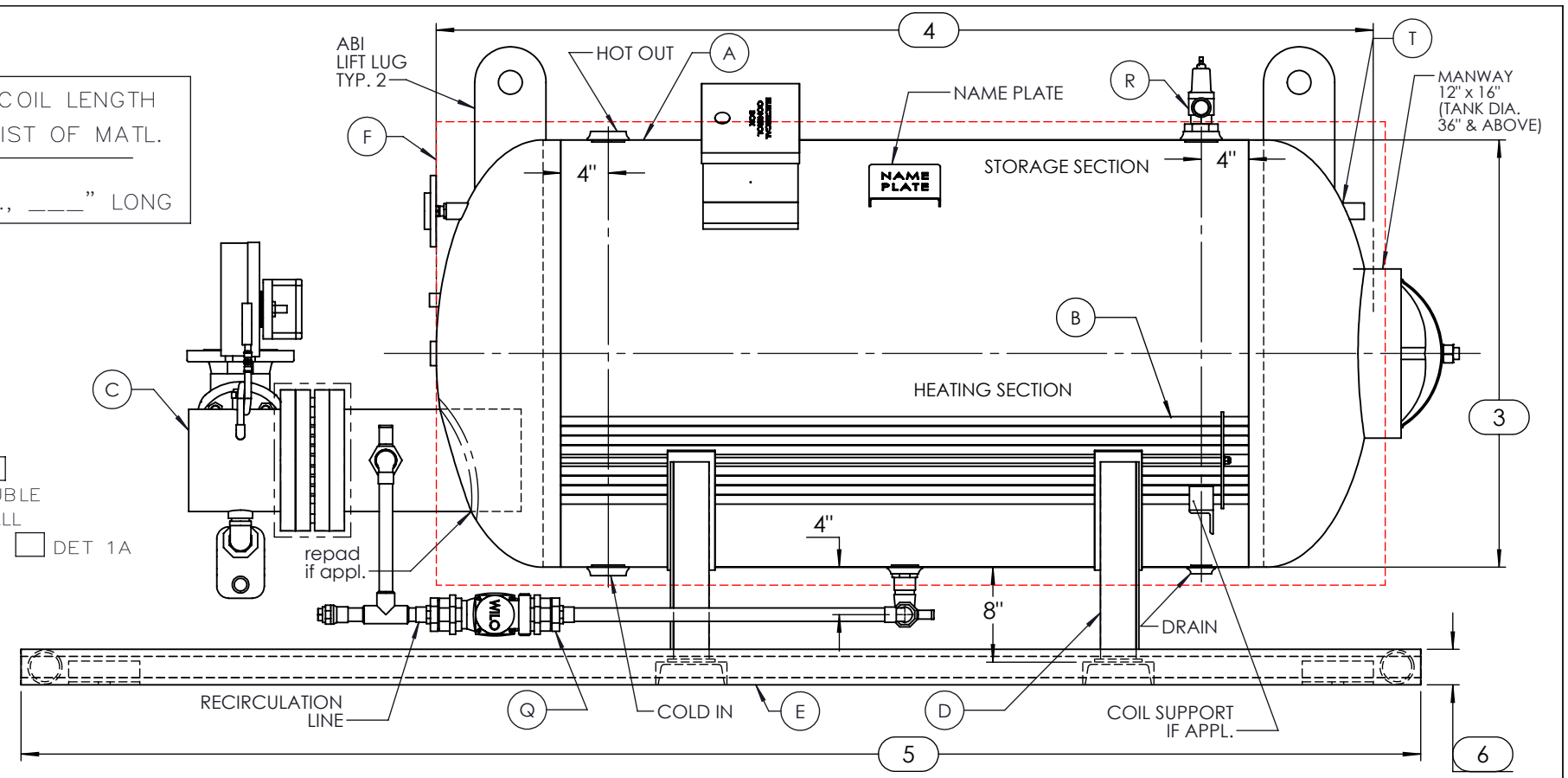
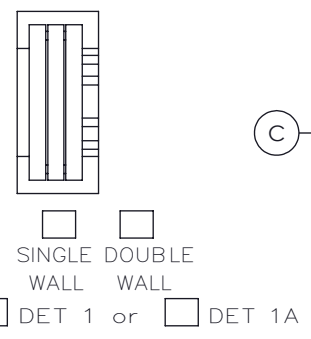
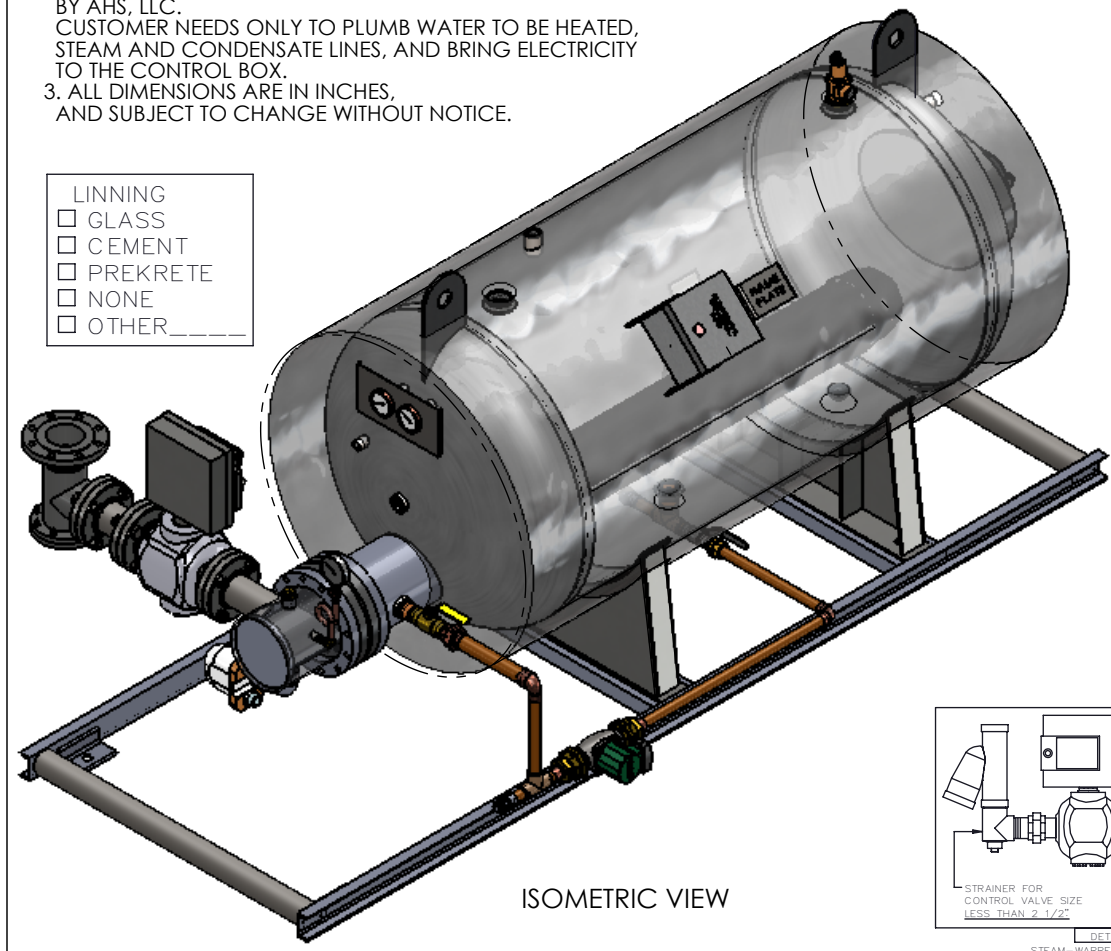


ALLOW COIL LENGTH FROM LIST OF MATL.
 —" DIA., —" LONG

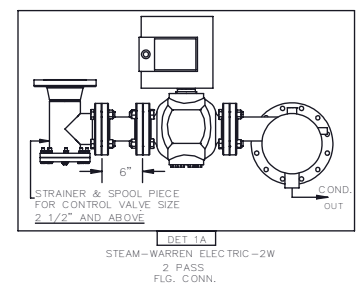
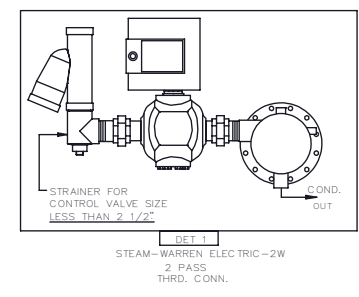


- NOTES:
- REFER TO "LIST OF MATERIALS" FOR DESCRIPTION OF LETTERED ITEMS.
 - ALL COMPONENTS SHOWN ARE PREWIRED AND/OR PREPIPED BY AHS, LLC. CUSTOMER NEEDS ONLY TO PLUMB WATER TO BE HEATED, STEAM AND CONDENSATE LINES, AND BRING ELECTRICITY TO THE CONTROL BOX.
 - ALL DIMENSIONS ARE IN INCHES, AND SUBJECT TO CHANGE WITHOUT NOTICE.

- LINNING
- GLASS
 - CEMENT
 - PREKRETE
 - NONE
 - OTHER _____



DIMENSIONS	SHELL SIZES					SHELL SIZES					SHELL SIZES					SHELL SIZES					SHELL SIZES							
	1802	1803	1804	1805		3004	3005	3006	3007		4204	4205	4206	4207		4208	5405	5406	5407		5408	6605	6606	6607	6608	6609		
1	24.32				1	36.32				1	48.32				1	60.66				1	72.66							
2	18.41				2	24.92				2	30.92				2	37.26				2	43.26							
3	18				3	30				3	42				3	54				3	66							
4	34	46	58	70	4	64	76	88	100	4	70	82	94	106	118	4	88	100	112	124	4	94	106	118	130	144		
5	62	74	86	98	5	100	112	124	136	5	109	121	133	145	157	5	127	139	151	163	5	133	145	157	169	181		
6	3				6	3				6	3				6	4				6	4							
DIMENSIONS	SHELL SIZES					SHELL SIZES					SHELL SIZES					SHELL SIZES					SHELL SIZES							
	2404	2405	2406	2407		3604	3605	3606	3607		3608	4804	4805	4806		4807	4808	6005	6006		6007	6008	6009	7205	7206	7207	7208	7209
1	30.32				1	42.32				1	54.32				1	66.66				1	78.66							
2	21.41				2	27.92				2	33.92				2	40.26				2	46.26							
3	24				3	36				3	48				3	60				3	72							
4	61	73	85	97	4	67	79	91	103	115	4	73	85	97	109	121	4	91	103	115	127	139	4	97	109	121	133	147
5	95	107	119	131	5	106	118	130	142	154	5	112	124	136	148	160	5	130	142	154	166	178	5	136	148	160	172	184
6	3				6	3				6	3				6	4				6	4							



CERTIFIED BY

Ace Heaters

MAXIMUM ALLOWABLE WORKING PRESSURE

SHELL 150 PSI @ 390 °F

TUBES 150 PSI @ 390 °F

MIN. D.M.T. 0 °F @ 150 PSI

S/N _____ YEAR BUILT _____

MODEL _____

CAPACITY _____ GAL SA. _____ SQFT

JOB NO. _____ XXX _____

ACE HEATERS

This document contains proprietary information from Ace Heaters. Do not reproduce or distribute without prior written consent of Ace Heaters.

ASME Section VIII Div 1:
 Design Pressure: 150 psig
 Test Pressure: 195 psig
 Max Design Temperature: 390°F

A.I:

SCALE: N/A

Filename: PHSE

SHEET 1 OF 1

Dwg By:

Orig Date:

Rev Date:

Checked By:

Horizontal Packaged Storage Water Heater

2W Steam - WARREN Electric Operated Valve Package

Dwg #: PHSE

SO:

REV. 1