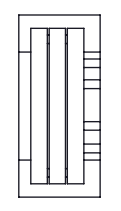
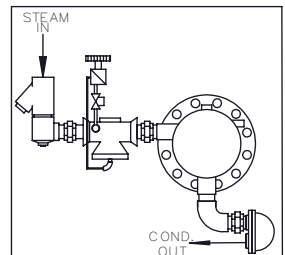
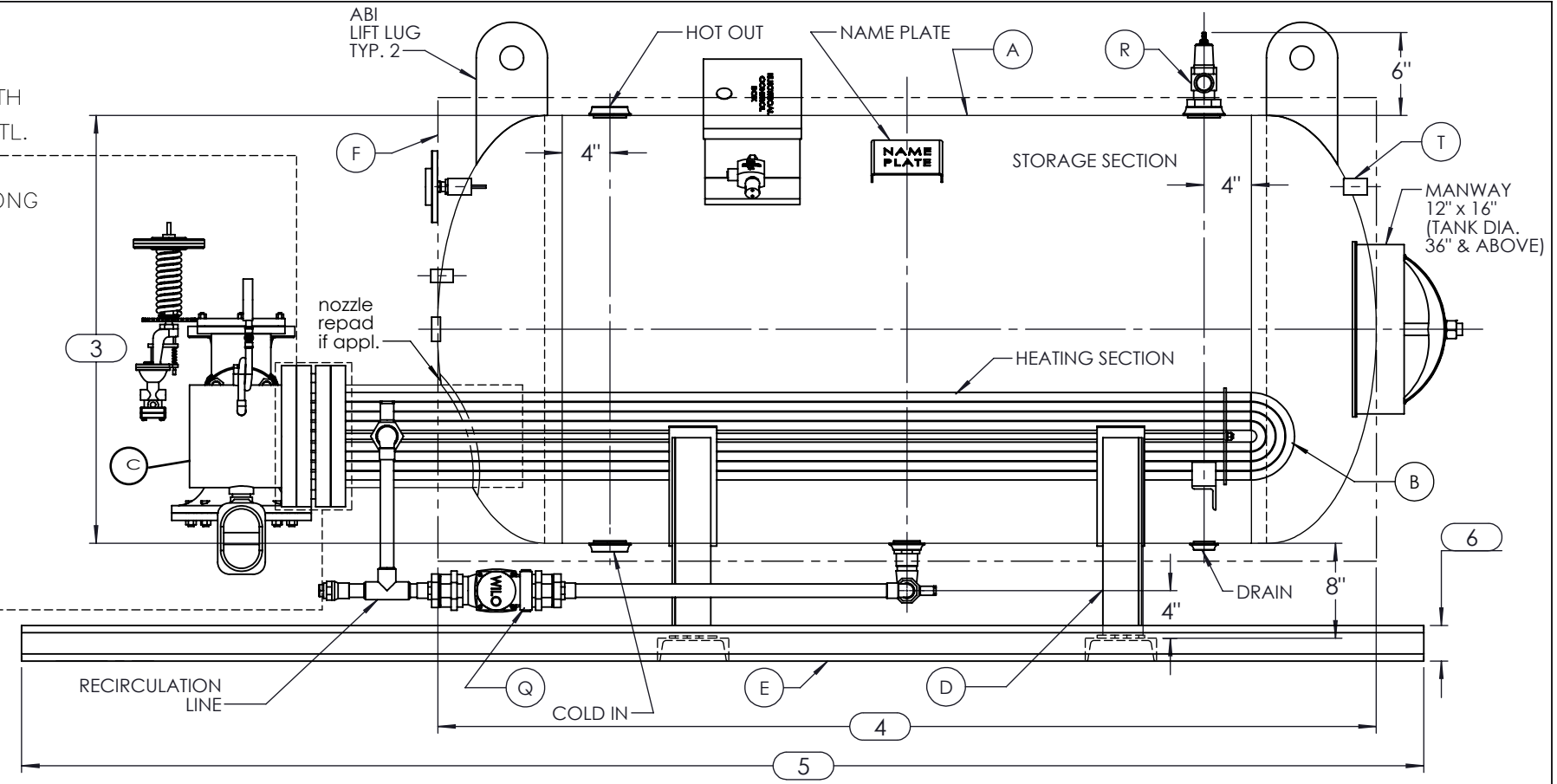


ALLOW COIL LENGTH FROM LIST OF MATL.  
 \_\_\_" DIA., \_\_\_" LONG

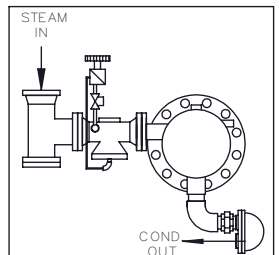
- LINNING
- GLASS
  - CEMENT
  - PREKRETE
  - NONE
  - OTHER \_\_\_\_\_



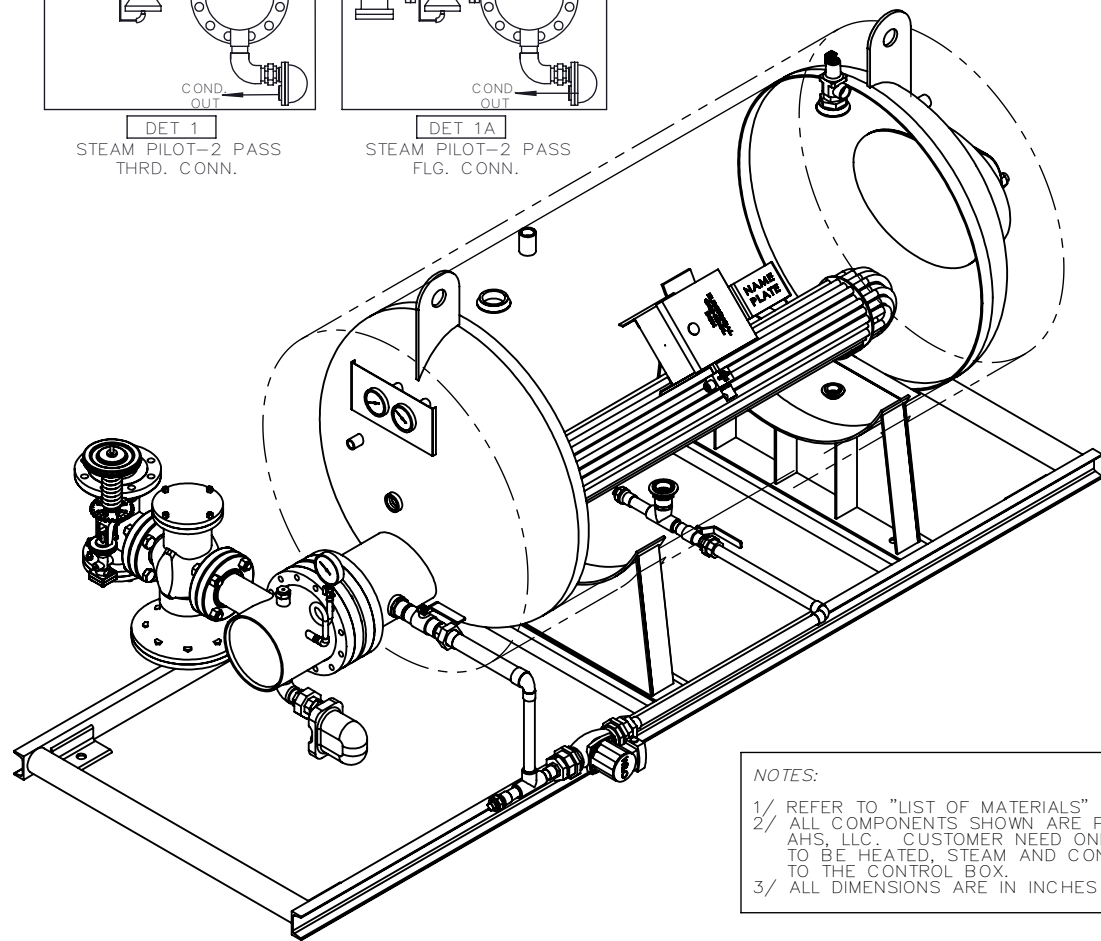
SINGLE WALL    DOUBLE WALL  
 USE  DET 1 or  DET 1A



DET 1  
 STEAM PILOT-2 PASS  
 THRD. CONN.



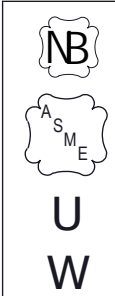
DET 1A  
 STEAM PILOT-2 PASS  
 FLG. CONN.



- MANWAY
- 11X15
  - 12X16
  - NONE

NOTES:  
 1/ REFER TO "LIST OF MATERIALS" FOR DESCRIPTION OF LETTERED ITEMS.  
 2/ ALL COMPONENTS SHOWN ARE PREWIRED AND/OR PREPARED BY AHS, LLC. CUSTOMER NEED ONLY TO PLUMB WATER TO BE HEATED, STEAM AND CONDENSATE LINES, AND BRING ELECTRICITY TO THE CONTROL BOX.  
 3/ ALL DIMENSIONS ARE IN INCHES AND SUBJECT TO CHANGE WITHOUT NOTICE.

| DIMENSIONS | SHELL SIZES |      |      |      | SHELL SIZES |      |      |      | SHELL SIZES |             |      |      |      | SHELL SIZES |             |      |      |      |       |       |      |      |      |      |
|------------|-------------|------|------|------|-------------|------|------|------|-------------|-------------|------|------|------|-------------|-------------|------|------|------|-------|-------|------|------|------|------|
|            | 1802        | 1803 | 1804 | 1805 | 3004        | 3005 | 3006 | 3007 | 4204        | 4205        | 4206 | 4207 | 4208 | 5405        | 5406        | 5407 | 5408 | 6605 | 6606  | 6607  | 6608 | 6609 |      |      |
| 1          | 24.32       |      |      |      | 36.32       |      |      |      | 48.32       |             |      |      |      | 60.66       |             |      |      |      | 72.66 |       |      |      |      |      |
| 2          | 18.41       |      |      |      | 24.92       |      |      |      | 30.92       |             |      |      |      | 37.26       |             |      |      |      | 43.26 |       |      |      |      |      |
| 3          | 18          |      |      |      | 30          |      |      |      | 42          |             |      |      |      | 54          |             |      |      |      | 66    |       |      |      |      |      |
| 4          | 34          | 46   | 58   | 70   | 64          | 76   | 88   | 100  | 70          | 82          | 94   | 106  | 118  | 88          | 100         | 112  | 124  | 94   | 106   | 118   | 130  | 144  |      |      |
| 5          | 62          | 74   | 86   | 98   | 100         | 112  | 124  | 136  | 109         | 121         | 133  | 145  | 157  | 127         | 139         | 151  | 163  | 133  | 145   | 157   | 169  | 181  |      |      |
| 6          | 3           |      |      |      | 3           |      |      |      | 3           |             |      |      |      | 4           |             |      |      |      | 4     |       |      |      |      |      |
| DIMENSIONS | SHELL SIZES |      |      |      | SHELL SIZES |      |      |      |             | SHELL SIZES |      |      |      |             | SHELL SIZES |      |      |      |       |       |      |      |      |      |
|            | 2404        | 2405 | 2406 | 2407 | 3604        | 3605 | 3606 | 3607 | 3608        | 4804        | 4805 | 4806 | 4807 | 4808        | 6005        | 6006 | 6007 | 6008 | 6009  | 7205  | 7206 | 7207 | 7208 | 7209 |
| 1          | 30.32       |      |      |      | 42.32       |      |      |      |             | 54.32       |      |      |      |             | 66.66       |      |      |      |       | 78.66 |      |      |      |      |
| 2          | 21.41       |      |      |      | 27.92       |      |      |      |             | 33.92       |      |      |      |             | 40.26       |      |      |      |       | 46.26 |      |      |      |      |
| 3          | 24          |      |      |      | 36          |      |      |      |             | 48          |      |      |      |             | 60          |      |      |      |       | 72    |      |      |      |      |
| 4          | 61          | 73   | 85   | 97   | 67          | 79   | 91   | 103  | 115         | 73          | 85   | 97   | 109  | 121         | 91          | 103  | 115  | 127  | 139   | 97    | 109  | 121  | 133  | 147  |
| 5          | 95          | 107  | 119  | 131  | 106         | 118  | 130  | 142  | 154         | 112         | 124  | 136  | 148  | 160         | 130         | 142  | 154  | 166  | 178   | 136   | 148  | 160  | 172  | 184  |
| 6          | 3           |      |      |      | 3           |      |      |      |             | 3           |      |      |      |             | 4           |      |      |      |       | 4     |      |      |      |      |



CERTIFIED BY  
**Ace Heaters**

MAXIMUM ALLOWABLE WORKING PRESSURE  
 SHELL 150 PSI @ 390 °F  
 TUBES 150 PSI @ 390 °F

MIN. D.M.T. 0 °F @ 150 PSI  
 S/N \_\_\_\_\_ YEAR BUILT \_\_\_\_\_

MODEL \_\_\_\_\_  
 CAPACITY \_\_\_\_\_ GAL SA. \_\_\_\_\_ SQFT  
 JOB NO. \_\_\_\_\_ XXX

**ACE HEATERS**

This document contains proprietary information from Ace Heaters. Do not reproduce or distribute without prior written consent of Ace Heaters.

ASME Section VIII Div 1: ,  
 Design Pressure: 150 psig  
 Test Pressure: 195 psig  
 Max Design Temperature: 390°F

A.I.:

SCALE: N/A    Filename: PHSP    SHEET 1 OF 1  
 Dwg By: \_\_\_\_\_    Orig Date: \_\_\_\_\_    Rev Date: \_\_\_\_\_    Checked By: \_\_\_\_\_

**Horizontal Packaged Storage Water Heater**  
**Steam - Pilot Operated Valve Package**

Dwg #: PHSP    SO: \_\_\_\_\_    REV. 1