

DET 1 or  DET 1A  
 DET 2 or  DET 2A  
 DET 3 or  DET 3A

SINGLE WALL  
 DOUBLE WALL

**NOTES:**  
 1. REFER TO "LIST OF MATERIALS" FOR DESCRIPTION OF LETTERED ITEMS.  
 2. ALL COMPONENTS SHOWN ARE PREWIRED AND/OR PREPIPED BY AHS, LLC. CUSTOMER NEEDS ONLY TO PLUMB WATER TO BE HEATED, STEAM AND CONDENSATE LINES, AND BRING ELECTRICITY TO THE CONTROL BOX.  
 3. DIMENSION 4 IS APPROXIMATE ONLY. CONSULT FACTORY FOR TIGHT DIMENSIONS.  
 4. ALL DIMENSIONS ARE IN INCHES AND SUBJECT TO CHANGE WITHOUT NOTICE.  
 \* LOCATION OF GAGES SHOWN FOR REPRESENTATION ONLY, NOT NECESSARILY ACCURATE LOCATIONS.

Shell Sizes	DIMENSIONS						
	1	2		3	4	Leg QUANTITY	
		Pipe Legs with Pads	Angle Legs with Pads			Pipe Legs with Pads	Angle Legs with Pads
1802	36						
1803	48						
1804	60						
1805	72						
2404	63						
2405	75						
2406	87	8 1/2	8	24	50 MAX	3	3
2407	99						
3004	66						
3005	78						
3006	90	11	8	30	58 MAX	3	3
3007	102						
3604	69						
3605	81						
3606	93	9 1/2	8	36	66 MAX	3	3
3607	105						
3608	117						
4204	72						
4205	84						
4206	96	13 1/2	8	42	72 MAX	3	3
4207	108						
4208	120						
4804	75						
4805	87						
4806	99	13	8	48	78 MAX	3	4
4807	111						
4808	123						
5405	91						
5406	103						
5407	115	11	8	54	84 MAX	3	4
5408	127						
6005	93						
6006	105						
6007	117	11	8	60	90 MAX	4	4
6008	129						
6009	141						
6605	95						
6606	107						
6607	119	12	8	66	96 MAX	4	4
6608	131						
6609	143						
7205	98						
7206	110						
7207	122	12 1/2	8	72	102 MAX	4	4
7208	134						
7209	146						

NAT'L BD. \_\_\_\_\_  
 CERTIFIED BY  
**Ace Heating Solutions, LLC**  
 2701 S. HARBOR BLVD. P.O. BOX 25170  
 SANTA ANA, CA 92799-5170  
 MAXIMUM ALLOWABLE WORKING PRESSURE  
 SHELL \_\_\_\_\_ PSI @ 210 °F  
 TUBES \_\_\_\_\_ PSI @ 370 °F  
 MIN. D.M.T. \_\_\_\_\_ °F @ \_\_\_\_\_ PSI  
 S/N \_\_\_\_\_ YEAR BUILT \_\_\_\_\_  
 MODEL \_\_\_\_\_  
 CAPACITY \_\_\_\_\_ GAL SA. \_\_\_\_\_ SQFT  
 JOB NO. \_\_\_\_\_ XXX

**ACE HEATING SOLUTIONS, LLC**  
 2701 S Harbor Blvd Santa Ana, CA 92704 Phone: (714) 540-2230 www.aceheatingllc.com

This document contains proprietary information from AHS, LLC. Do not reproduce or distribute without prior written consent of AHS, LLC.

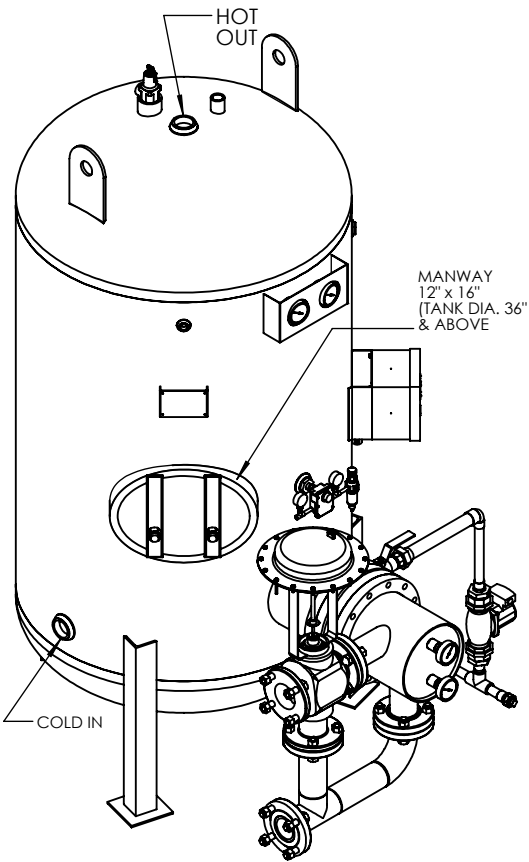
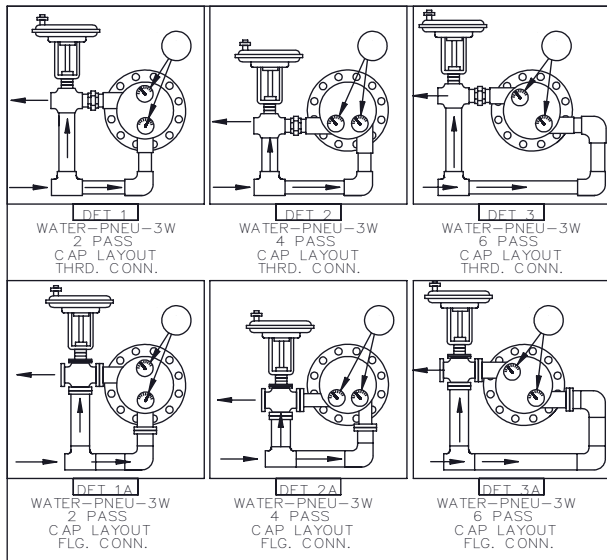
ASME Section VIII Div 1: 2013 Ed. Design Pressure: 125/150 psig Test Pressure: 163/195 psig Max Design Temperature: 400°F

A.I.: \_\_\_\_\_

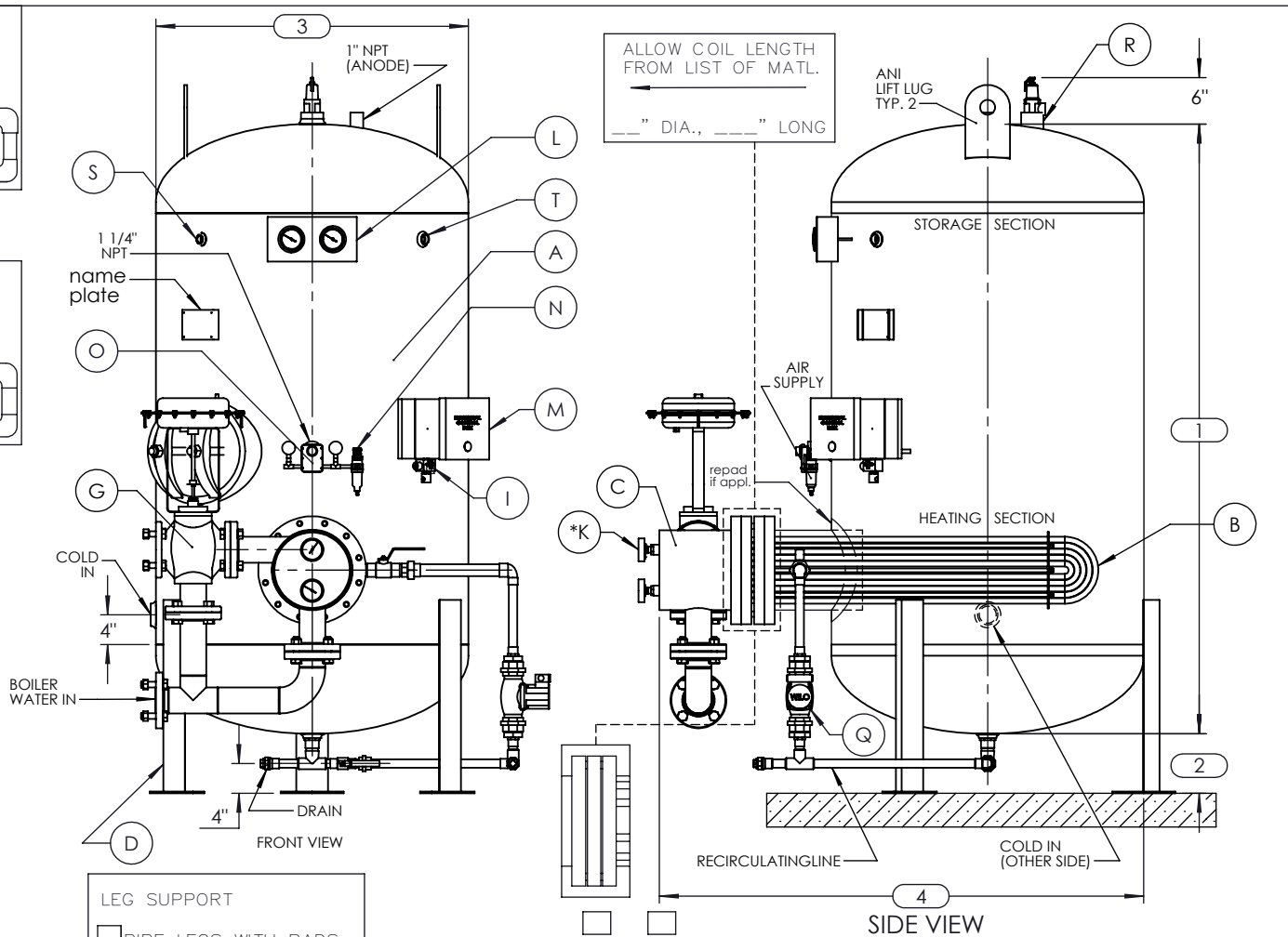
SCALE: N/A Filename: PVWA-3W-LINS  
 Dwg By: VN Orig Date: 3/10/09 Rev Date: 9/25/12 Checked By: \_\_\_\_\_

**VERTICAL PACKAGED STORAGE WATER HEATER**  
 WATER 3 Way - PNEU. OPERATED PACKAGE - NO SKID - LESS INS.

Dwg #: PVWA-3W-LINS SO: \_\_\_\_\_ REV. 1



ISOMETRIC VIEW



- LEG SUPPORT
- PIPE LEGS WITH PADS
  - ANGLE LEGS WITH PADS (AS SHOWN)
  - OTHER: SEISMIC

- USE  DET 1 or  DET 1A
- DET 2 or  DET 2A
- DET 3 or  DET 3A

NOTES:

- REFER TO "LIST OF MATERIALS" FOR DESCRIPTION OF LETTERED ITEMS.
  - ALL COMPONENTS SHOWN ARE PREWIRED AND/OR PREPARED BY AHS, LLC. CUSTOMER NEEDS ONLY TO PLUMB WATER TO BE HEATED, STEAM AND CONDENSATE LINES, AND BRING ELECTRICITY TO THE CONTROL BOX.
  - DIMENSION 4 IS APPROXIMATE ONLY. CONSULT FACTORY FOR TIGHT DIMENSIONS.
  - ALL DIMENSIONS ARE IN INCHES AND SUBJECT TO CHANGE WITHOUT NOTICE.
- \*LOCATION OF GAGES SHOWN FOR REPRESENTATION ONLY. NOT NECESSARILY ACURATE LOCATIONS.

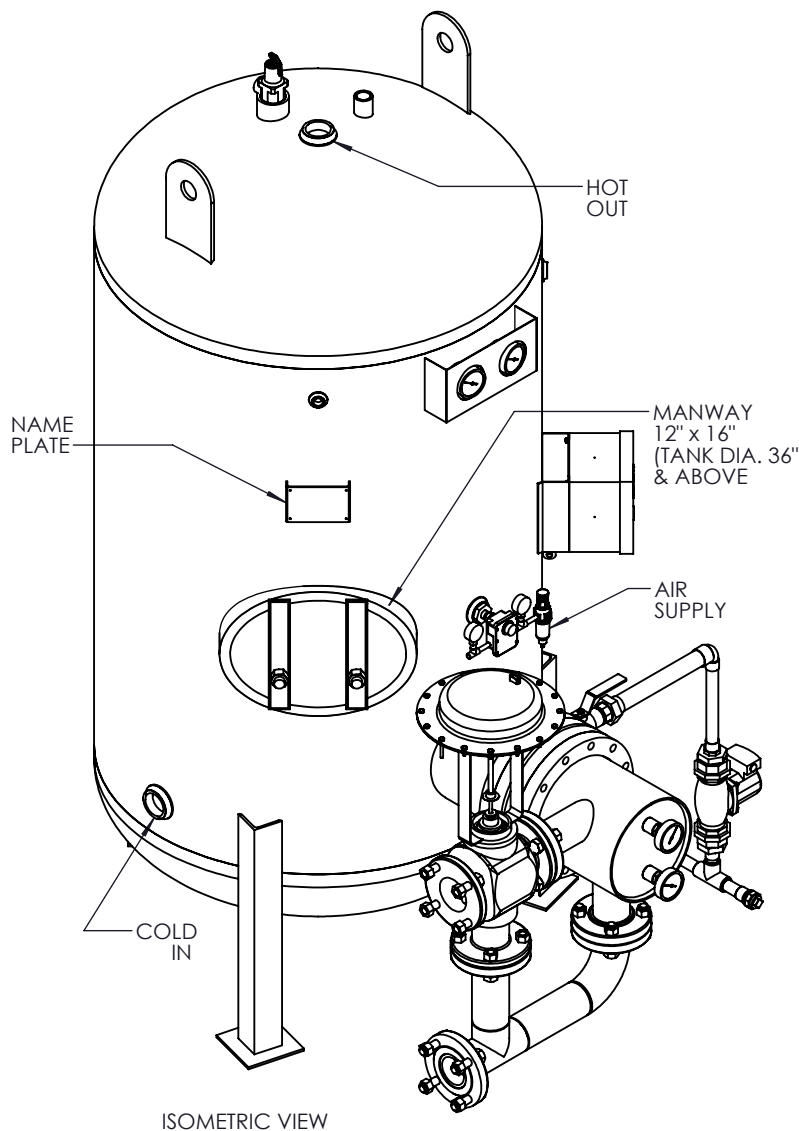
	NAT'L BD. _____		<b>ACE HEATING SOLUTIONS, LLC</b>	
	CERTIFIED BY <b>Ace Heating Solutions, LLC</b> 2701 S. HARBOR BLVD. P.O. BOX 25170 SANTA ANA, CA 92799-5170		2701 S Harbor Blvd Phone: (714) 540-2230 Santa Ana, CA 92704 www.aceheatingllc.com	
	MAXIMUM ALLOWABLE WORKING PRESSURE SHELL _____ PSI @ _____ °F TUBES _____ PSI @ _____ °F		This document contains proprietary information from AHS, LLC. Do not reproduce or distribute without prior written consent of AHS, LLC.	
	MIN. D.M.T. _____ °F @ _____ PSI S/N _____ YEAR BUILT _____		ASME Section VIII Div 1: 2013 Ed. Design Pressure: 125/150 psig Test Pressure: 163/195 psig Max Design Temperature: 400°F	
MODEL _____ CAPACITY _____ GAL SA. _____ SQFT JOB NO. _____ XXX		SCALE: N/A Filename: PVWA-3W-LINS SHEET 1 OF 2 Dwg By: VN Orig Date: 3/10/09 Rev Date: 9/25/12 Checked By: _____		
		<b>VERTICAL PACKAGED STORAGE WATER HEATER</b> WATER 3 Way - PNEU. OPERATED PACKAGE - NO SKID - LESS INS.		
		Dwg #: PVWA-3W-LINS SO: _____ REV. 1		

SEE DIMENSION TABLE IN SHEET 2

Shell Sizes	DIMENSIONS						Leg QUANTITY	
	1	2		3	4	Pipe Legs with Pads	Angle Legs with Pads	
		Pipe Legs with Pads	Angle Legs with Pads					
1802	36	8	8	18	38 MAX	3	3	
1803	48							
1804	60							
1805	72							
2404	63	8 1/2	8	24	50 MAX	3	3	
2405	75							
2406	87							
2407	99							
3004	66	11	8	30	58 MAX	3	3	
3005	78							
3006	90							
3007	102							
3604	69	9 1/2	8	36	66 MAX	3	3	
3605	81							
3606	93							
3607	105							
3608	117	13 1/2	8	42	72 MAX	3	3	
4204	72							
4205	84							
4206	96							
4207	108	13	8	48	78 MAX	3	4	
4208	120							
4804	75							
4805	87							
4806	99	11	8	54	84 MAX	3	4	
4807	111							
4808	123							
5405	91							
5406	103	11	8	60	90 MAX	4	4	
5407	115							
5408	127							
6005	93							
6006	105	12	8	66	96 MAX	4	4	
6007	117							
6008	129							
6009	141							
6605	95	12 1/2	8	72	102 MAX	4	4	
6606	107							
6607	119							
6608	131							
6609	143	12 1/2	8	72	102 MAX	4	4	
7205	98							
7206	110							
7207	122							
7208	134							
7209	146							

NOTES:

1. REFER TO "LIST OF MATERIALS" FOR DESCRIPTION OF LETTERED ITEMS.
  2. ALL COMPONENTS SHOWN ARE PREWIRED AND/OR PREPIPED BY AHS, LLC. CUSTOMER NEEDS ONLY TO PLUMB WATER TO BE HEATED, STEAM AND CONDENSATE LINES, AND BRING ELECTRICITY TO THE CONTROL BOX.
  3. DIMENSION 4 IS APPROXIMATE ONLY. CONSULT FACTORY FOR TIGHT DIMENSIONS.
  4. ALL DIMENSIONS ARE IN INCHES AND SUBJECT TO CHANGE WITHOUT NOTICE.
- \* LOCATION OF GAGES SHOWN FOR REPRESENTATION ONLY. NOT NECESSARILY ACURATE LOCATIONS.



ISOMETRIC VIEW

<b>ACE HEATING SOLUTIONS, LLC</b>			
2701 S Harbor Blvd Santa Ana, CA 92704		Phone: (714) 540-2230 www.aceheatingllc.com	
This document contains proprietary information from AHS, LLC. Do not reproduce or distribute without prior written consent of AHS, LLC.		ASME Section VIII Div 1: 2013 Ed. Design Pressure: 125/150 psig Test Pressure: 163/195 psig Max Design Temperature: 400°F	A.I.
SCALE: N/A	Filename: PVWA-3W-LINS	SHEET 2 OF 2	
Dwg By: VN	Orig Date: 3/10/09	Rev Date: 9/25/12	Checked By:
<b>VERTICAL PACKAGED STORAGE WATER HEATER</b>			
WATER 3 Way - PNEU. OPERATED PACKAGE - NO SKID - LESS INS.			
Dwg #: PVWA-3W-LINS	SO:	REV. 1	