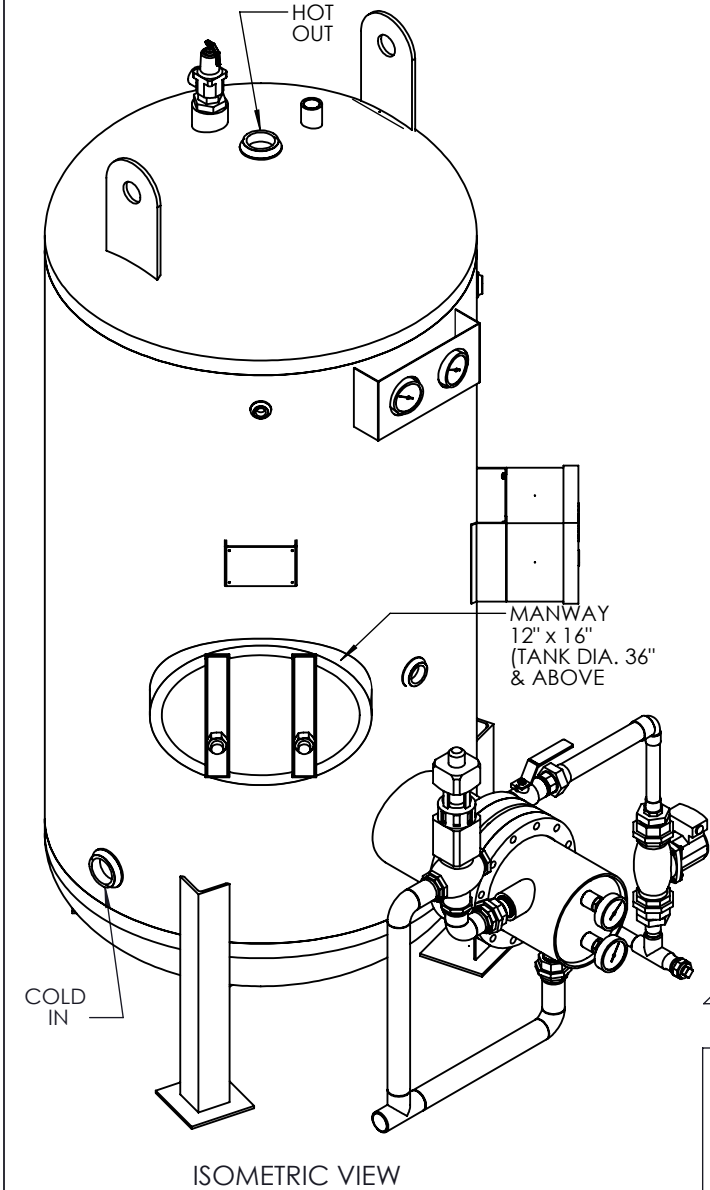
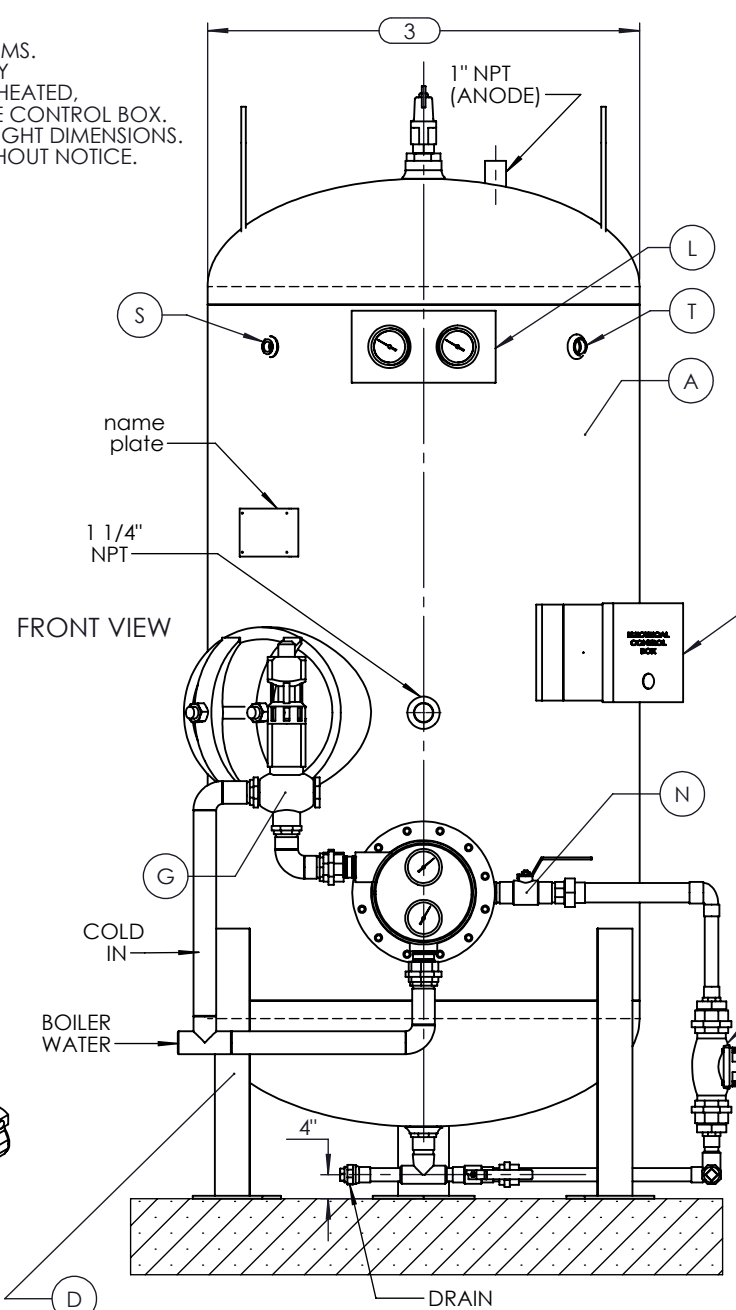


**NOTES:**

1. REFER TO "LIST OF MATERIALS" FOR DESCRIPTION OF LETTERED ITEMS.
  2. ALL COMPONENTS SHOWN ARE WIRED AND/OR PREPARED BY ACE HEATERS. CUSTOMER NEEDS ONLY TO PLUMB WATER TO BE HEATED, STEAM AND CONDENSATE LINES, AND BRING ELECTRICITY TO THE CONTROL BOX.
  3. DIMENSION 4 IS APPROXIMATE ONLY. CONSULT FACTORY FOR TIGHT DIMENSIONS.
  4. ALL DIMENSIONS ARE IN INCHES AND SUBJECT TO CHANGE WITHOUT NOTICE.
- \* LOCATION OF GAGES SHOWN FOR REPRESENTATION ONLY, NOT NECESSARILY ACCURATE LOCATIONS.



FRONT VIEW



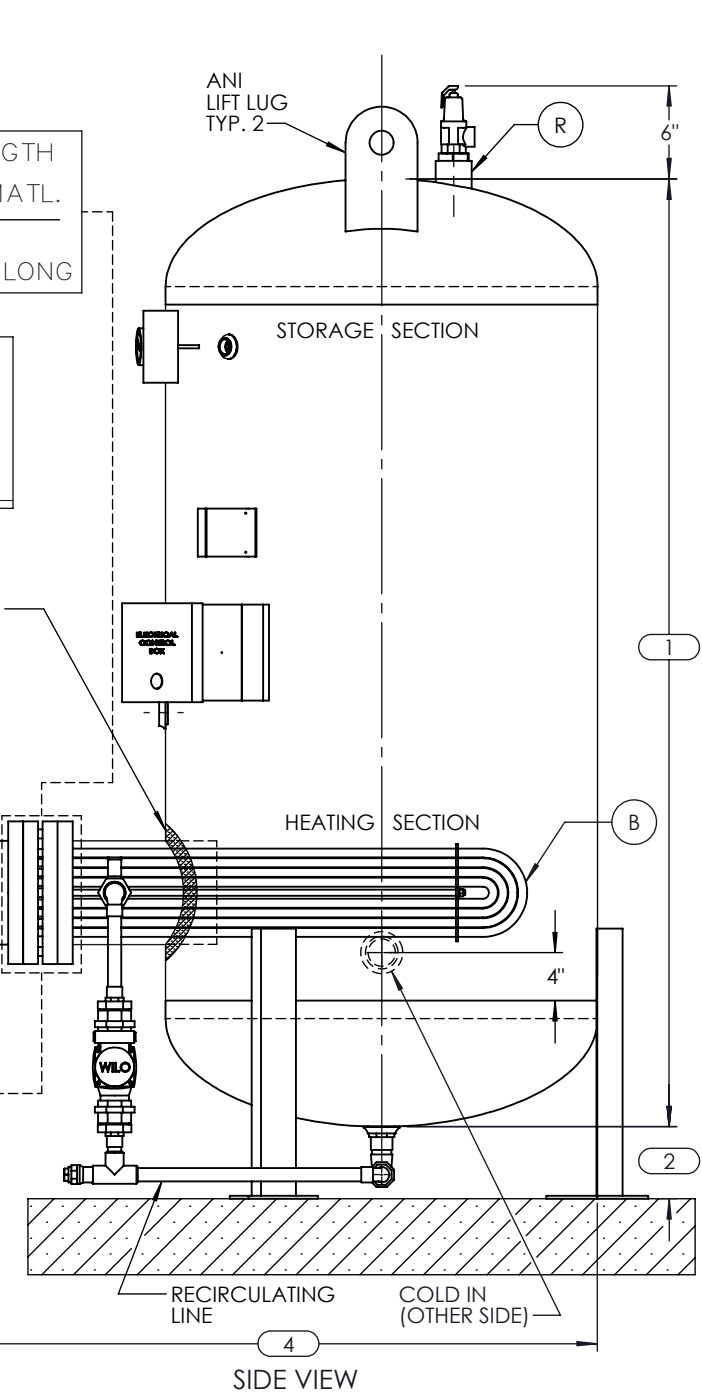
ALLOW COIL LENGTH FROM LIST OF MATL.  
 \_\_\_" DIA., \_\_\_" LONG

LINNING  
 GLASS  
 CEMENT  
 PREKRETE  
 NONE  
 OTHER

LEG SUPPORT  
 PIPE LEGS WITH PADS  
 ANGLE LEGS WITH PADS (AS SHOWN)  
 OTHER: SEISMIC

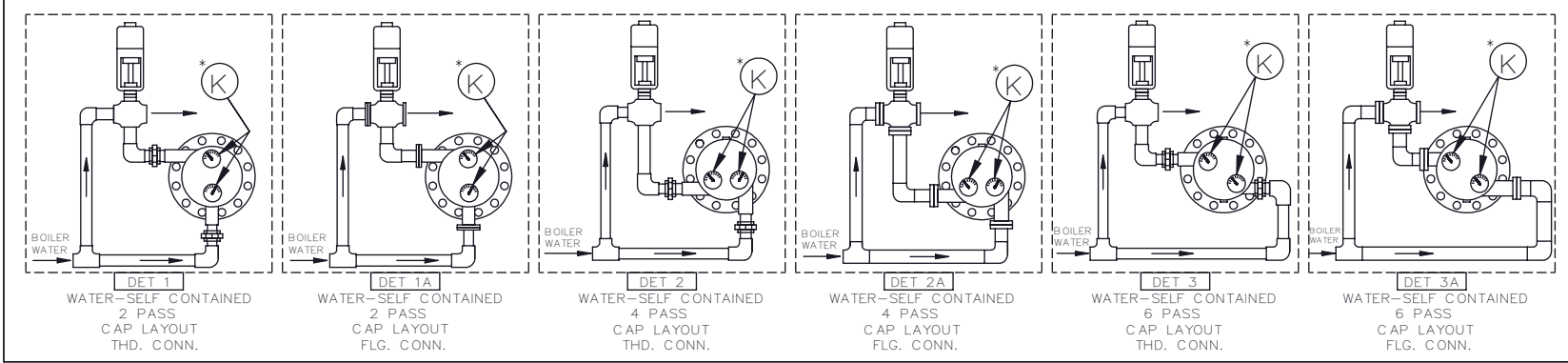
USE  DET 1 or  DET 1A  
 DET 2 or  DET 2A  
 DET 3 or  DET 3A

SINGLE WALL  
 DOUBLE WALL



SIDE VIEW

Shell Sizes	DIMENSIONS						
	1	2		3	4	Leg QUANTITY	
		Pipe Legs with Pads	Angle Legs with Pads			Pipe Legs with Pads	Angle Legs with Pads
1802	36						
1803	48						
1804	60	8	8	18	38 MAX	3	3
1805	72						
2404	63						
2405	75	8 1/2	8	24	50 MAX	3	3
2406	87						
2407	99						
3004	66						
3005	78	11	8	30	58 MAX	3	3
3006	90						
3007	102						
3604	69						
3605	81						
3606	93	9 1/2	8	36	66 MAX	3	3
3607	105						
3608	117						
4204	72						
4205	84						
4206	96	13 1/2	8	42	72 MAX	3	3
4207	108						
4208	120						
4804	75						
4805	87						
4806	99	13	8	48	78 MAX	3	4
4807	111						
4808	123						
5405	91						
5406	103						
5407	115	11	8	54	84 MAX	3	4
5408	127						
6005	93						
6006	105						
6007	117	11	8	60	90 MAX	4	4
6008	129						
6009	141						
6605	95						
6606	107						
6607	119	12	8	66	96 MAX	4	4
6608	131						
6609	143						
7205	98						
7206	110						
7207	122	12 1/2	8	72	102 MAX	4	4
7208	134						
7209	146						



**ACE HEATERS**

MAXIMUM ALLOWABLE WORKING PRESSURE  
 SHELL 150 PSI @ 390 °F  
 TUBES 150 PSI @ 390 °F

MIN. D.M.T. 0 °F @ 150 PSI  
 S/N \_\_\_\_\_ YEAR BUILT \_\_\_\_\_

MODEL \_\_\_\_\_  
 CAPACITY \_\_\_\_\_ GAL SA. \_\_\_\_\_ SQFT  
 JOB NO. \_\_\_\_\_ XXX \_\_\_\_\_

**ACE HEATERS**

This document contains proprietary information from ACE HEATERS. Do not reproduce or distribute without prior written consent of ACE HEATERS.

ASME Section VIII Div 1:  
 Design Pressure: 150 psig  
 Test Pressure: 195 psig  
 Max Design Temperature: 390°F

SCALE: N/A    Filename: PVWS-LINS    SHEET 1 OF 1

Dwg By: \_\_\_\_\_    Orig Date: \_\_\_\_\_    Rev Date: \_\_\_\_\_    Checked By: \_\_\_\_\_

VERTICAL PACKAGED STORAGE WATER HEATER  
 WATER - SELF CONTAINED VALVE PKG. - NO SKID - LESS INS.

Dwg #: PVWS-LINS    SO: \_\_\_\_\_    REV. 1