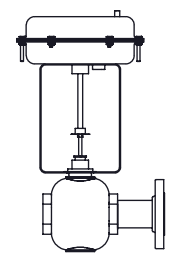


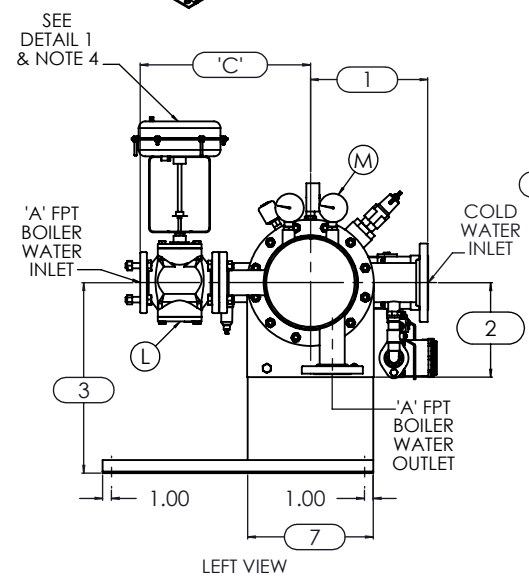
NOTES:

1. REFER TO PRODUCT SPECIFICATION FOR DESCRIPTION OF LETTERED ITEMS.
2. INSTALLATION:
ALL COMPONENTS SHOWN HERE ARE PREWIRED & PREPIPED BY ACE HEATERS.
CUSTOMER WILL ONLY NEED TO PLUMB WATER TO BE HEATED, PIPE STEAM AND CONDENSATE LINES, AND BRING ELECTRICITY TO UNIT.
3. DIMENSIONS ARE SUBJECT TO CHANGE.
CONSULT FACTORY FOR TIGHT DIMENSIONS.
4. THIS CONFIGURATION CHANGES FOR VALVE SIZE 1/2" TO 2". SEE DETAIL 1 FOR REFERENCE.

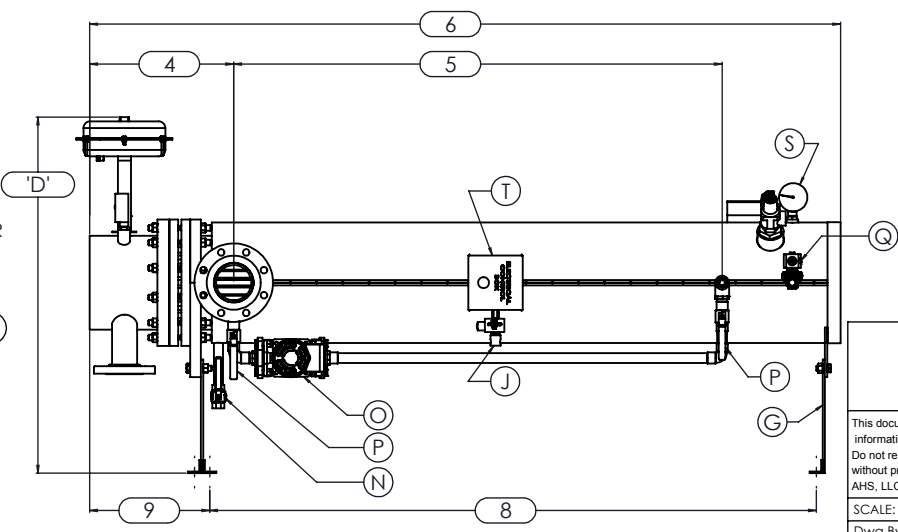
APPROX. EMPTY WT:



DETAIL 1



LEFT VIEW



FRONT VIEW

	CERTIFIED BY <i>Ace Heaters, LLC</i> www.aceheaters.com	
	MAXIMUM ALLOWABLE WORKING PRESSURE SHELL <u>150</u> PSI @ <u>210</u> °F TUBES <u>150</u> PSI @ <u>370</u> °F MIN. D.M.T. <u>0</u> °F @ <u>150</u> PSI S/N _____ YEAR BUILT _____	
	MODEL _____ CAPACITY _____ GAL SA. _____ JOB NO. _____ XXX	
	Ace Heaters, LLC www.aceheaters.com	
	<small>This document contains proprietary information from AHS, LLC. Do not reproduce or distribute without prior written consent of AHS, LLC.</small>	

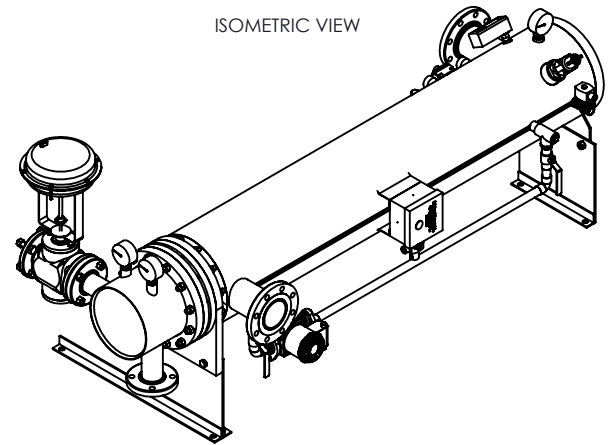
Ace Heaters, LLC www.aceheaters.com		A.I:
<small>ASME Section VIII Div 1: 2015 Ed. Design Pressure: 150 psig Test Pressure: 195 psig Max Design Temperature: 370°F</small>		
SCALE: NA	Filename: SIHDW - COVER	SHEET 1 OF 2
Dwg By: JL	Orig Date: 12/29/15	Rev Date: _____ Checked By: _____
MINIPACK SYSTEM - HORIZONTAL - DW WATER 2W - PNEUMATIC OPERATED VALVE PACKAGE		
Dwg #: SIHDWWA	SO: _____	REV 01

SIHDWWA-2W, DW - WATER - PNEUMATIC 2-WAY MIXING VALVE PACKAGE

	MP SIZE	5	6	8	10	12	14	16
ITEMS	1	10	10 1/2	11 1/2	13 1/2	14 1/2	15 1/2	16 1/2
	2	7 11/16	8 3/16	10 1/8	10 13/16	12 1/2	12 1/4	14
	3	14 7/8	15 3/8	18 5/16	22	26 7/8	26 5/8	28 3/8
	4	13 7/8	14 3/8	15 7/8	16 1/8	17 9/16	21 5/8	24 1/8
	5	55	54 1/2	55 1/4	56	54 1/2	63	66 3/4
	6	80 3/16	81 5/16	83 9/16	85 9/16	88 7/16	100 7/8	106 1/2
	7	8 3/4	9 7/8	11 7/8	14 1/2	16 5/8	18 1/2	20
	8	65 7/8	66 7/8	68	69 1/2	70 11/16	80 5/16	83 7/16
	9	11 3/4	11 3/4	12 5/8	13 3/8	14 3/16	18	19 1/2
	10	1 3/8	1 1/2	2 1/16	2 1/2	3 1/16	3 1/8	3 1/4
	11	64	64	64	64	64	75	80
	12	4 13/16	4 13/16	5 15/16	5 11/16	8 1/8	7 1/4	7 3/8
INLET PIPE SIZE		2 1/2 FLG.	2 1/2 FLG.	3 FLG.	4 FLG.	4 FLG.	5 FLG.	6 FLG.
OUTLET PIPE SIZE		2 1/2 FLG.	2 1/2 FLG.	3 FLG.	4 FLG.	4 FLG.	5 FLG.	6 FLG.

VALVE SIZE 'A'	ITEM	VALVE SIZE AND OVERALL LOCATION							
1/2"	'C'	16 1/16	16 5/16	17 5/16	19 13/16	21 5/16	23 5/16	25 5/16	
	'D'	30 11/16	31 3/16	34 1/8	37 13/16	42 11/16	42 7/16	44 3/16	
3/4"	'C'	17 1/16	17 5/16	18 5/16	20 13/16	22 5/16	24 5/16	26 5/16	
	'D'	30 11/16	31 3/16	34 1/8	37 13/16	42 11/16	42 7/16	44 3/16	
1"	'C'	17 1/16	17 5/16	18 5/16	20 13/16	22 5/16	24 5/16	26 5/16	
	'D'	30 11/16	31 3/16	34 1/8	37 13/16	42 11/16	42 7/16	44 3/16	
1 1/4"	'C'	17 1/16	17 5/16	18 5/16	20 13/16	22 5/16	24 5/16	26 5/16	
	'D'	30 11/16	31 3/16	34 1/8	37 13/16	42 11/16	42 7/16	44 3/16	
1 1/2"	'C'	17 1/16	17 5/16	18 5/16	20 13/16	22 5/16	24 5/16	26 5/16	
	'D'	31 7/16	31 15/16	34 7/8	38 9/16	43 7/16	43 3/16	44 15/16	
2"	'C'	18 7/16	18 11/16	19 11/16	22 3/16	23 11/16	25 11/16	27 11/16	
	'D'	33 1/8	33 5/8	36 9/16	40 1/4	45 1/8	44 7/8	46 5/8	
2 1/2"	'C'	15 3/4	16	17	19 1/2	21	23	25	
	'D'	33 7/8	34 3/8	37 5/16	41	45 7/8	45 5/8	47 3/8	
3"	'C'	N/A	17	18	20 1/2	22	24	26	
	'D'	N/A	36 1/4	39 3/16	42 7/8	47 3/4	47 1/2	49 1/4	
4"	'C'	N/A	N/A	21	23 1/2	25	27	29	
	'D'	N/A	N/A	41 3/16	44 7/8	49 3/4	49 1/2	51 1/4	
5"	'C'	N/A	N/A	N/A	26 1/4	27 3/4	29 3/4	31 3/4	
	'D'	N/A	N/A	N/A	44 7/8	49 3/4	49 1/2	51 1/4	

ISOMETRIC VIEW



NOTES:
 1/ DIMENSIONS IN INCHES, AND SUBJECT TO CHANGE WITHOUT NOTICE.
 2/ DIM 'C', 'D' ARE TO BE APPROXIMATED ONLY, CONSULT FACTORY FOR TIGHT DIMENSIONS.

Ace Heaters, LLC
www.aceheaters.com

This document contains proprietary information from AHS, LLC. Do not reproduce or distribute without prior written consent of AHS, LLC.		ASME Section VIII Div 1: 2015 Ed. Design Pressure: 150 psig Test Pressure: 195 psig Max Design Temperature: 370°F	A.I.
SCALE: NA	Filename: SIHDW - COVER	SHEET 2 OF 2	
Dwg By: JL	Orig Date: 12/29/15	Rev Date:	Checked By:
MINIPACK SYSTEM - HORIZONTAL - DW WATER 2W - PNEUMATIC OPERATED VALVE PACKAGE			
Dwg #: SIHDWWA	SO:	REV 01	