

8

7

6

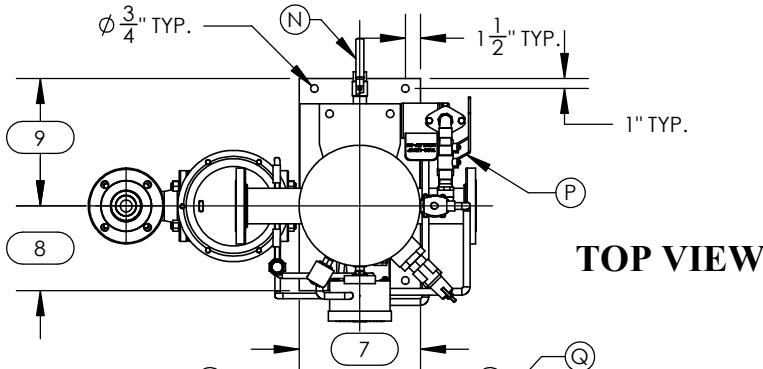
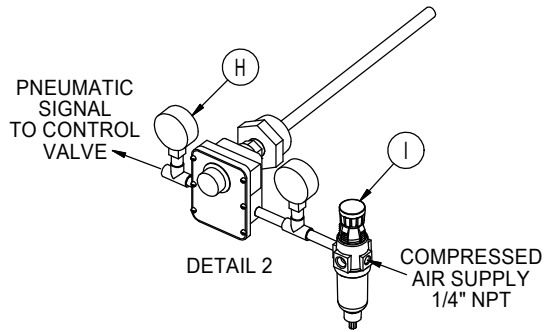
5

4

3

2

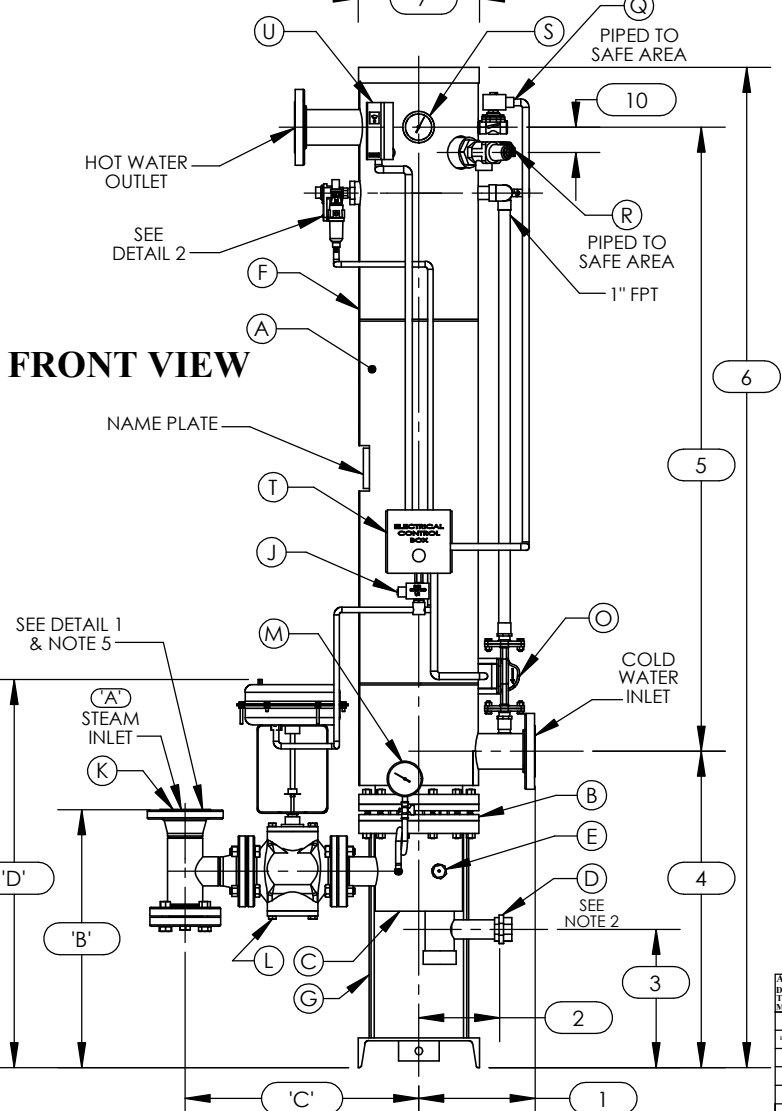
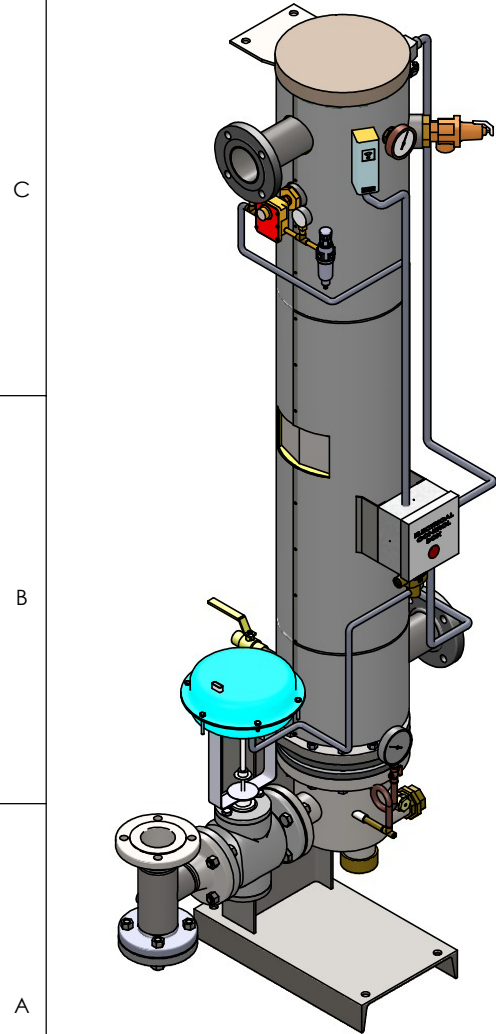
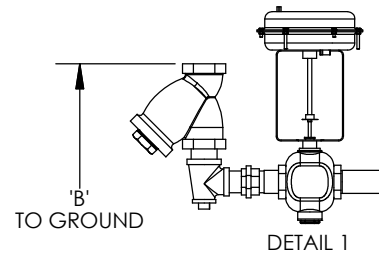
1



NOTES:

1. REFER TO PRODUCT SPECIFICATION FOR DESCRIPTION OF LETTERED ITEMS.
2. CONDENSATE: CONDENSATE IS TO BE PIPED FROM HEATER WITHOUT LIFTS TO A VENTED RECEIVER OR DRAIN BELOW THE ELEVATION OF THE HEATER'S CONDENSATE OUTLET.
3. INSTALLATION: ALL COMPONENTS SHOWN HERE ARE PREWIRED & PREPIPED BY ACE HEATERS, LLC. CUSTOMER WILL ONLY NEED TO PLUMB WATER TO BE HEATED, PIPE STEAM AND CONDENSATE LINES, AND BRING ELECTRICITY TO UNIT.
4. DIMENSIONS ARE SUBJECT TO CHANGE. CONSULT FACTORY FOR TIGHT DIMENSIONS.
5. THIS CONFIGURATION CHANGES FOR VALVE SIZE 1/2" TO 2". SEE DETAIL 1 FOR REFERENCE.

APPROX. EMPTY WT:



	CERTIFIED BY	
	Ace Heaters, LLC	
	www.aceheaters.com	
	MAXIMUM ALLOWABLE WORKING PRESSURE	
	SHELL	150 PSI @ 210 °F
TUBES	150 PSI @ 370 °F	
MIN. D.M.T. 0 °F @ 150 PSI		
S/N _____ YEAR BUILT _____		
MODEL _____		
CAPACITY _____ GAL SA. SQFT		
JOB NO. _____ XXX		



ASME SECTION VIII DIV 1		
DESIGN PRESSURE: (150) psig		
TEXT PRESSURE: (150) psig		
MAX DESIGN TEMPERATURE: 370 °F		
DESIGN	NAME	DATE
DRWNS	K. JIMENEZ	04/12/2023
CRWD		
APVD		
MRG		
QA		
UNLESS OTHERWISE SPECIFIED DIMENSIONS ARE IN INCHES TOLERANCE		
DECIMALS	ANGULAR	
.XX # 0	# 3	
MAX SURF	MAX SURF	

Ace Heaters, LLC	
www.aceheaters.com	
MATERIAL:	TITLE: SIVDW - COVER
FINISH:	MINIPACK SYSTEM-VERTICAL DW
WEIGHT:	STEAM - PNEUMATIC
	OPERATED VALVE PACKAGE
DWG NO. SIVDWSA	REV. 02
SCALE: NA	SHEET: 1 OF 2

ISOMETRIC VIEW

THE INFORMATION CONTAINED WITHIN THIS DRAWING IS PROPRIETARY AND THE SOLE PROPERTY OF ACE HEATERS, LLC. ANY REPRODUCTION IN PART OR AS A WHOLE WITHOUT THE WRITTEN PERMISSION OF ACE HEATERS, LLC IS PROHIBITED.

8

7

6

5

4

3

2

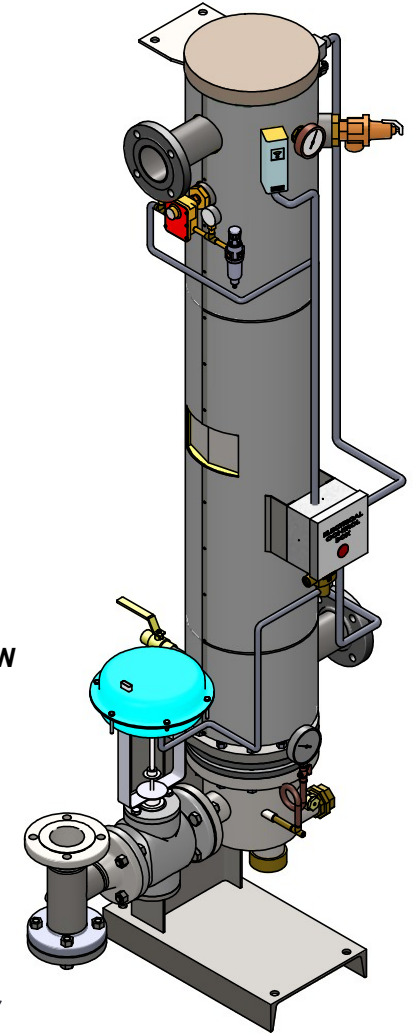
1

SIVDWSA, STEAM - PNEUMATIC OPERATED VALVE PACKAGE SIZE AND LOCATION

MP SIZE	5	6	8	10	12	14	16	
ITEMS	1	10	10 1/2	11 1/2	13 1/2	14 1/2	15 1/2	16 1/2
D	2	5 3/8	5 3/4	8	8	9 11/16	10 15/16	12 3/16
I	3	12 1/8	14 1/4	13 11/16	16 1/8	12 1/2	13 1/4	12 1/2
M	4	27 9/16	30 9/16	31 5/16	35 5/8	39 3/8	41 5/8	43 7/8
E	5	61 1/2	62	61 3/4	64	62 1/2	72	75 3/4
S	6	93 7/8	97 3/8	98 5/8	105 1/4	110	121	127
I	7	12	12	12	18	18	18	18
O	8	11 1/16	10 3/8	9 1/4	13 11/16	12	15 1/4	13 1/2
N	9	9 15/16	10 5/8	11 3/4	13 5/16	15	14 3/4	16 1/2
S	10	2 1/2	2 1/2	2 1/2	2 1/2	2 1/2	2 1/2	2 1/2
INLET PIPE SIZE		2 1/2 FLG.	2 1/2 FLG.	3 FLG.	4 FLG.	4 FLG.	5 FLG.	6 FLG.
OUTLET PIPE SIZE		2 1/2 FLG.	2 1/2 FLG.	3 FLG.	4 FLG.	4 FLG.	5 FLG.	6 FLG.

VALVE SIZE	ITEM	VALVE SIZE AND OVERALL LOCATION						
1/2"	'A'	3/4						
	'B'	22 1/8	24 1/2	24 5/8	27 7/16	27 11/16	29 13/16	30 11/16
	'C'	20 5/16	20 9/16	21 9/16	24 1/16	25 9/16	27 9/16	29 9/16
	'D'	23 3/16	25 9/16	25 11/16	28 1/2	28 3/4	30 7/8	31 3/4
3/4"	'A'	1						
	'B'	23 3/16	25 9/16	25 11/16	28 1/2	28 3/4	30 7/8	31 3/4
	'C'	21 5/16	21 9/16	22 9/16	25 1/16	26 9/16	28 9/16	30 9/16
	'D'	32 3/4	35 1/8	35 1/4	38 1/16	38 5/16	40 7/16	41 5/16
1"	'A'	1 1/2						
	'B'	23 5/8	26	26 1/8	28 15/16	29 3/16	31 5/16	32 3/16
	'C'	22 1/8	22 3/8	23 3/8	25 7/8	27 3/8	29 3/8	31 3/8
	'D'	32 3/4	35 1/8	35 1/4	38 1/16	38 5/16	40 7/16	41 5/16
1 1/4"	'A'	1 1/2						
	'B'	24 5/8	27	27 1/8	29 15/16	30 3/16	32 5/16	33 3/16
	'C'	21 7/16	21 11/16	22 11/16	25 3/16	26 11/16	28 11/16	30 11/16
	'D'	32 3/4	35 1/8	35 1/4	38 1/16	38 5/16	40 7/16	41 5/16
1 1/2"	'A'	2						
	'B'	26 3/16	28 9/16	28 11/16	31 1/2	31 3/4	33 7/8	34 3/4
	'C'	22 1/16	22 5/16	23 5/16	25 13/16	27 5/16	29 5/16	31 5/16
	'D'	33 1/2	35 7/8	36	38 13/16	39 1/16	41 3/16	42 1/16
2"	'A'	2 1/2						
	'B'	28 3/16	30 9/16	30 11/16	33 1/2	33 3/4	35 7/8	36 3/4
	'C'	24 1/4	24 1/2	25 1/2	28	29 1/2	31 1/2	33 1/2
	'D'	35 3/16	37 9/16	37 11/16	40 1/2	40 3/4	42 7/8	43 3/4
2 1/2"	'A'	3						
	'B'	23 1/16	25 7/16	25 9/16	28 3/8	28 5/8	30 3/4	31 5/8
	'C'	20 1/4	20 1/2	21 1/2	24	25 1/2	27 1/2	29 1/2
	'D'	35 15/16	38 5/16	38 7/16	41 1/4	41 1/2	43 5/8	44 1/2
3"	'A'	4						
	'B'	N/A	26 1/2	26 5/8	29 7/16	29 11/16	31 13/16	32 11/16
	'C'	N/A	22 5/16	23 5/16	25 13/16	27 5/16	29 5/16	31 5/16
	'D'	N/A	40 3/16	40 5/16	43 1/8	43 3/8	45 1/2	46 3/8
4"	'A'	6						
	'B'	N/A	N/A	28 9/16	31 3/8	31 5/8	33 3/4	34 5/8
	'C'	N/A	N/A	27 3/16	29 11/16	31 3/16	33 3/16	35 3/16
	'D'	N/A	N/A	42 5/16	45 1/8	45 3/8	47 1/2	48 3/8
5"	'A'	6						
	'B'	N/A	N/A	N/A	31 3/8	31 5/8	33 3/4	34 5/8
	'C'	N/A	N/A	N/A	33 5/16	34 13/16	36 13/16	38 13/16
	'D'	N/A	N/A	N/A	45 1/8	45 3/8	47 1/2	48 3/8

ISOMETRIC VIEW



NOTES:

- 1/ DIMENSIONS IN INCHES, AND SUBJECT TO CHANGE WITHOUT NOTICE.
- 2/ DIM 'B', 'C', 'D' ARE TO BE APPROXIMATED ONLY, CONSULT FACTORY FOR TIGHT DIMENSIONS.



a nudyne company

Ace Heaters, LLC

www.aceheaters.com



ASME SECTION VIII DIV 1		
DESIGN PRESSURE: (0.50) psig		
TEXT PRESSURE: (0.75) psig		
MAX DESIGN TEMPERATURE: 370 °F		
DRWSN	K. JIMENEZ	04/12/2023
CHKD		
APPD		
MRG		
QA		

MATERIAL:	TITLE: SIVDWSA - COVER
FINISH:	MINIPACK SYSTEM-VERTICAL DW
WEIGHT:	STEAM - PNEUMATIC OPERATED VALVE PACKAGE
UNLESS OTHERWISE SPECIFIED DIMENSIONS ARE IN INCHES TOLERANCE	DWG NO. SIVDWSA-DIM
DECIMALS .XX # 0	REV. 02
ANGULAR # 3	
SCALE: NA	SHEET: 2 OF 2

THE INFORMATION CONTAINED WITHIN THIS DRAWING IS PROPRIETARY AND THE SOLE PROPERTY OF ACE HEATERS, LLC. ANY REPRODUCTION IN PART OR AS A WHOLE WITHOUT THE WRITTEN PERMISSION OF ACE HEATERS, LLC IS PROHIBITED.