

8

7

6

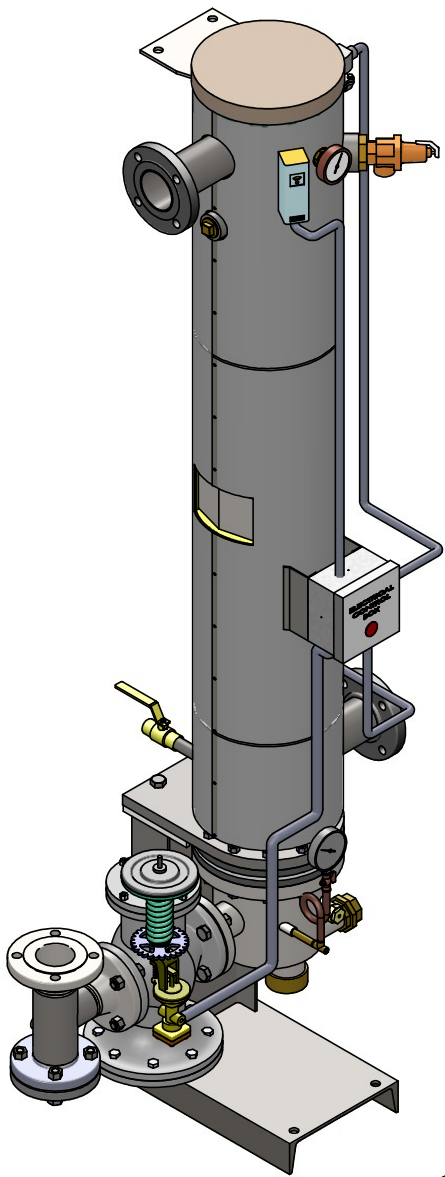
5

4

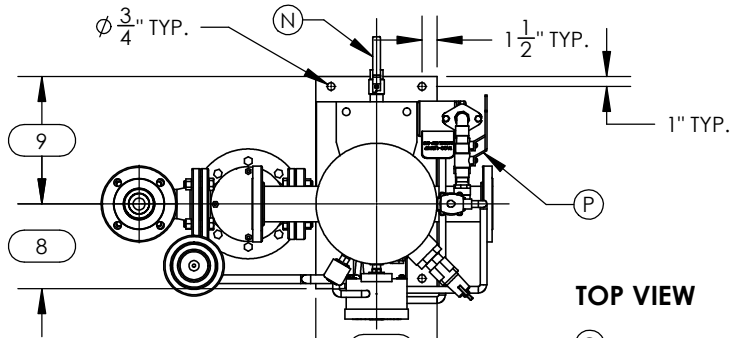
3

2

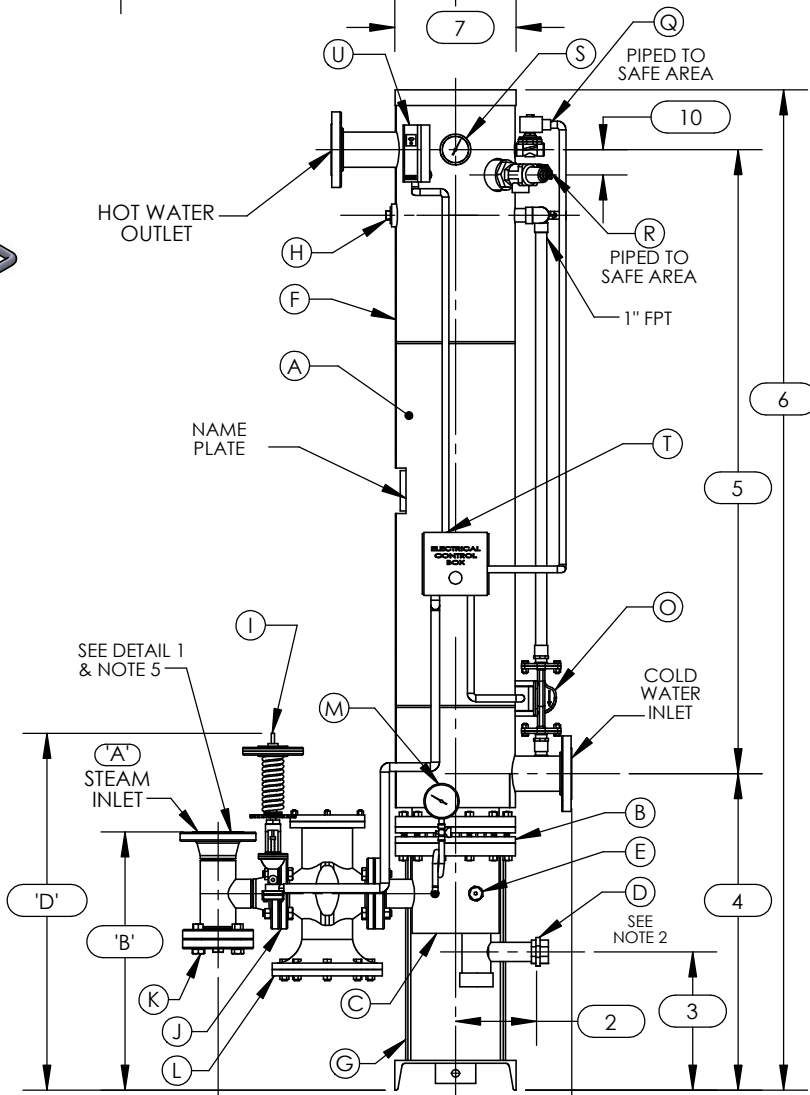
1



ISOMETRIC VIEW



TOP VIEW

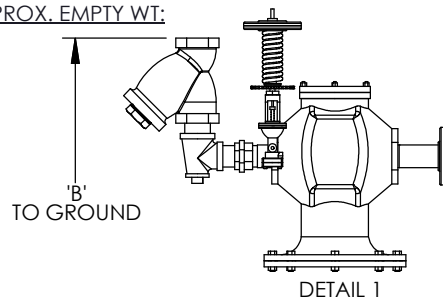


FRONT VIEW

NOTES:

1. REFER TO PRODUCT SPECIFICATION FOR DESCRIPTION OF LETTERED ITEMS.
2. **CONDENSATE:**
CONDENSATE IS TO BE PIPED FROM HEATER WITHOUT LIFTS TO A VENTED RECEIVER OR DRAIN BELOW THE ELEVATION OF THE HEATER'S CONDENSATE OUTLET.
3. **INSTALLATION:**
ALL COMPONENTS SHOWN HERE ARE PREWIRED & PREPIPED BY ACE HEATERS, LLC. CUSTOMER WILL ONLY NEED TO PLUMB WATER TO BE HEATED, PIPE STEAM AND CONDENSATE LINES, AND BRING ELECTRICITY TO UNIT.
4. DIMENSIONS ARE SUBJECT TO CHANGE. CONSULT FACTORY FOR TIGHT DIMENSIONS.
5. THIS CONFIGURATION CHANGES FOR VALVE SIZE 1/2" TO 2". SEE DETAIL 1 FOR REFERENCE.

APPROX. EMPTY WT:



DETAIL 1



	CERTIFIED BY Ace Heaters, LLC www.aceheaters.com
	MAXIMUM ALLOWABLE WORKING PRESSURE SHELL 150 PSI @ 210 °F TUBES 150 PSI @ 370 °F MIN. D.M.T. 0 °F @ 150 PSI S/N _____ YEAR BUILT _____
	MODEL _____ CAPACITY _____ GAL SA. SQFT JOB NO. _____ XXX



ASME SECTION VIII DIV 1: DESIGN PRESSURE: (150) psig TEXT PRESSURE: (150) psig MAX DESIGN TEMPERATURE: 370 °F		
DESIGNER	NAME	DATE
CHKD	K. JIMENEZ	04/12/2023
APP'D		
MFG		
QA		

Ace Heaters, LLC

MATERIAL:	TITLE: SIVDW - COVER MINIPACK SYSTEM-VERTICAL DW STEAM - PILOT ELECTRIC OPERATED VALVE PACKAGE
FINISH:	
WEIGHT:	
UNLESS OTHERWISE SPECIFIED DIMENSIONS ARE IN INCHES TOLERANCE	DWG NO. SIVDWS P
DECIMALS .XX # 0 ANGULAR # 3 XXX # 010 MAX SURF	REV. 02
SCALE: NA	SHEET: 1 OF 2

THE INFORMATION CONTAINED WITHIN THIS DRAWING IS PROPRIETARY AND THE SOLE PROPERTY OF ACE HEATERS, LLC. ANY REPRODUCTION IN PART OR AS A WHOLE WITHOUT THE WRITTEN PERMISSION OF ACE HEATERS, LLC IS PROHIBITED.

8

7

6

5

4

3

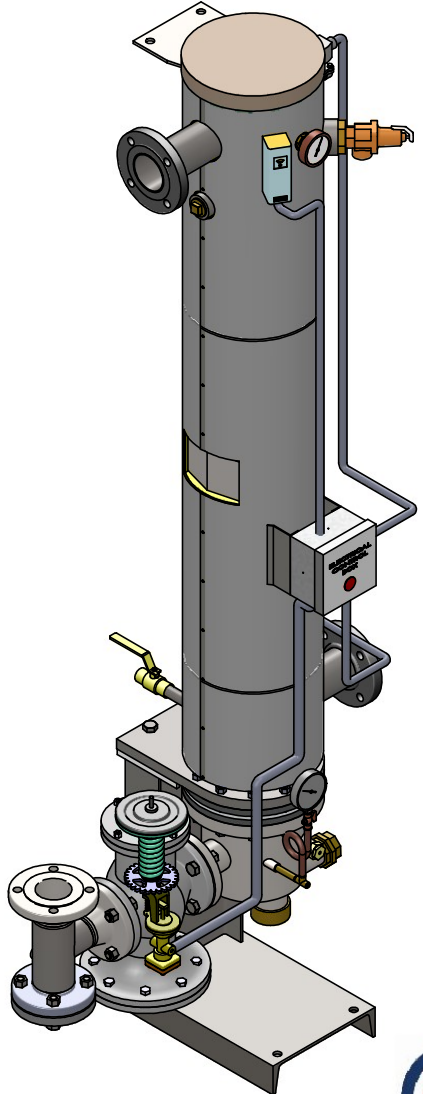
2

1

SIVDWSP, STEAM - PILOT OPERATED VALVE PACKAGE SIZE AND LOCATION

ITEMS	MP SIZE	5	6	8	10	12	14	16
D	1	10	10 1/2	11 1/2	13 1/2	14 1/2	15 1/2	16 1/2
I	2	5 3/8	5 3/4	8	8	9 11/16	10 15/16	12 3/16
M	3	12 1/8	14 1/4	13 11/16	16 1/8	12 1/2	13 1/4	12 1/2
E	4	27 9/16	30 9/16	31 5/16	35 5/8	39 3/8	41 5/8	43 7/8
S	5	61 1/2	62	61 3/4	64	62 1/2	72	75 3/4
I	6	93 7/8	97 3/8	98 5/8	105 1/4	110	121	127
O	7	12	12	12	18	18	18	18
N	8	11 1/16	10 3/8	9 1/4	13 11/16	12	15 1/4	13 1/2
S	9	9 15/16	10 5/8	11 3/4	13 5/16	15	14 3/4	16 1/2
	10	2 1/2	2 1/2	2 1/2	2 1/2	2 1/2	2 1/2	2 1/2
	INLET PIPE SIZE	2 1/2 FLG.	2 1/2 FLG.	3 FLG.	4 FLG.	4 FLG.	5 FLG.	6 FLG.
	OUTLET PIPE SIZE	2 1/2 FLG.	2 1/2 FLG.	3 FLG.	4 FLG.	4 FLG.	5 FLG.	6 FLG.

VALVE SIZE	ITEM	VALVE SIZE AND OVERALL LOCATION							
1/2"	'A'	3/4							
	'B'	22 11/80	24 41/80	24 51/80	27 9/20	27 7/10	29 33/40	30 7/10	
	'C'	18 3/8	18 5/8	19 5/8	22 1/8	23 5/8	25 5/8	27 5/8	
	'D'	27 1/2	29 7/8	30	32 13/16	33 1/16	35 3/16	36 1/16	
3/4"	'A'	1							
	'B'	23 2/11	25 34/61	25 43/63	28 49/99	28 38/51	30 67/77	31 38/51	
	'C'	19 5/8	19 7/8	20 7/8	23 3/8	24 7/8	26 7/8	28 7/8	
	'D'	30 3/4	33 1/8	33 1/4	36 1/16	36 5/16	38 7/16	39 5/16	
1"	'A'	1 1/2							
	'B'	23 5/8	26	26 1/8	28 15/16	29 3/16	31 5/16	32 3/16	
	'C'	20 13/16	21 1/16	22 1/16	24 9/16	26 1/16	28 1/16	30 1/16	
	'D'	28 1/4	30 5/8	30 3/4	33 9/16	33 13/16	35 15/16	36 13/16	
1 1/4"	'A'	1 1/2							
	'B'	24 11/18	26 73/74	27 1/9	29 73/79	30 4/23	32 29/97	33 4/23	
	'C'	21 7/16	21 11/16	22 11/16	25 3/16	26 11/16	28 11/16	30 11/16	
	'D'	28 3/4	31 1/8	31 1/4	34 1/16	34 5/16	36 7/16	37 5/16	
1 1/2"	'A'	2							
	'B'	26 3/16	28 9/16	28 11/16	31 1/2	31 3/4	33 7/8	34 3/4	
	'C'	23 3/16	23 7/16	24 7/16	26 15/16	28 7/16	30 7/16	32 7/16	
	'D'	29	31 3/8	31 1/2	34 5/16	34 9/16	36 11/16	37 9/16	
2"	'A'	2 1/2							
	'B'	28 3/16	30 9/16	30 11/16	33 1/2	33 3/4	35 7/8	36 3/4	
	'C'	30 9/16	30 13/16	31 13/16	34 5/16	35 13/16	37 13/16	39 13/16	
	'D'	32 5/16	34 11/16	34 13/16	37 5/8	37 7/8	40	40 7/8	
2 1/2"	'A'	3							
	'B'	23 1/16	25 7/16	25 9/16	28 3/8	28 5/8	30 3/4	31 5/8	
	'C'	20 5/8	20 7/8	21 7/8	24 3/8	25 7/8	27 7/8	29 7/8	
	'D'	29 5/8	32	32 1/8	34 15/16	35 3/16	37 5/16	38 3/16	
3"	'A'	4							
	'B'	N/A	26 1/2	26 5/8	29 7/16	29 11/16	31 13/16	32 11/16	
	'C'	N/A	22 5/16	23 5/16	25 13/16	27 5/16	29 5/16	31 5/16	
	'D'	N/A	35 3/16	35 5/16	38 1/8	38 3/8	40 1/2	41 3/8	
4"	'A'	6							
	'B'	N/A	N/A	28 9/16	31 3/8	31 5/8	33 3/4	34 5/8	
	'C'	N/A	N/A	27 9/16	30 1/16	31 9/16	33 9/16	35 9/16	
	'D'	N/A	N/A	34 13/16	37 5/8	37 7/8	40	40 7/8	
5"	'A'	6							
	'B'	N/A	N/A	N/A	31 3/8	31 5/8	33 3/4	34 5/8	
	'C'	N/A	N/A	N/A	33 5/16	34 13/16	36 13/16	38 13/16	
	'D'	N/A	N/A	N/A	38 1/8	38 3/8	40 1/2	41 3/8	



ISOMETRIC VIEW



a nudyne company

Ace Heaters, LLC
www.aceheaters.com



ASME SECTION VIII DIV 1		
DESIGN PRESSURE: (150) psig		
TEXT PRESSURE: (150) psig		
MAX DESIGN TEMPERATURE: 370 °F		
DRWNS	NAME	DATE
K. JIMENEZ		04/12/2023
CRWD		
APWD		
MGI		
QA		

MATERIAL:	TITLE: SIVDW - COVER
FINISH:	MINIPACK SYSTEM-VERTICAL DW
WEIGHT:	STEAM - PILOT ELECTRIC
	OPERATED VALVE PACKAGE
UNLESS OTHERWISE SPECIFIED DIMENSIONS ARE IN INCHES TOLERANCE	DWG NO. SIVDWSP - DIM
DECIMALS .XX # 0	ANGULAR # 5
XXX # .010 MAX SURF	SCALE: NA
	SHEET: 2 OF 2

NOTES:
 1/ DIMENSIONS IN INCHES, AND SUBJECT TO CHANGE WITHOUT NOTICE.
 2/ DIM 'B', 'C', 'D' ARE TO BE APPROXIMATED ONLY, CONSULT FACTORY FOR TIGHT DIMENSIONS.