

D

C

B

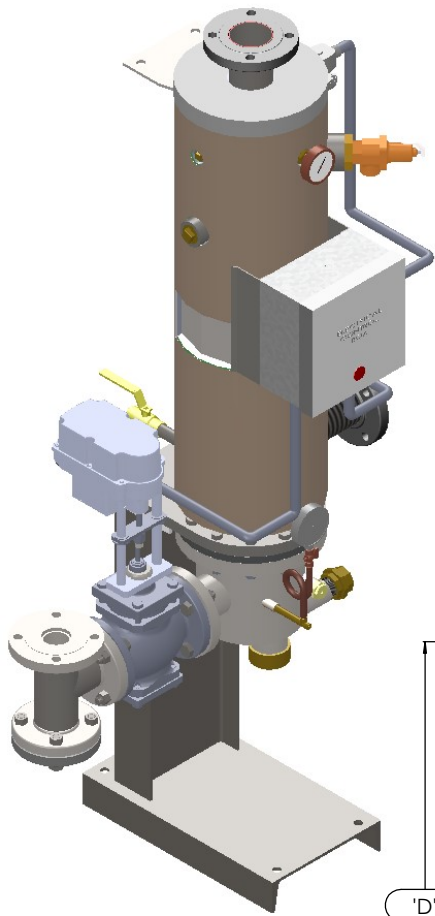
A

D

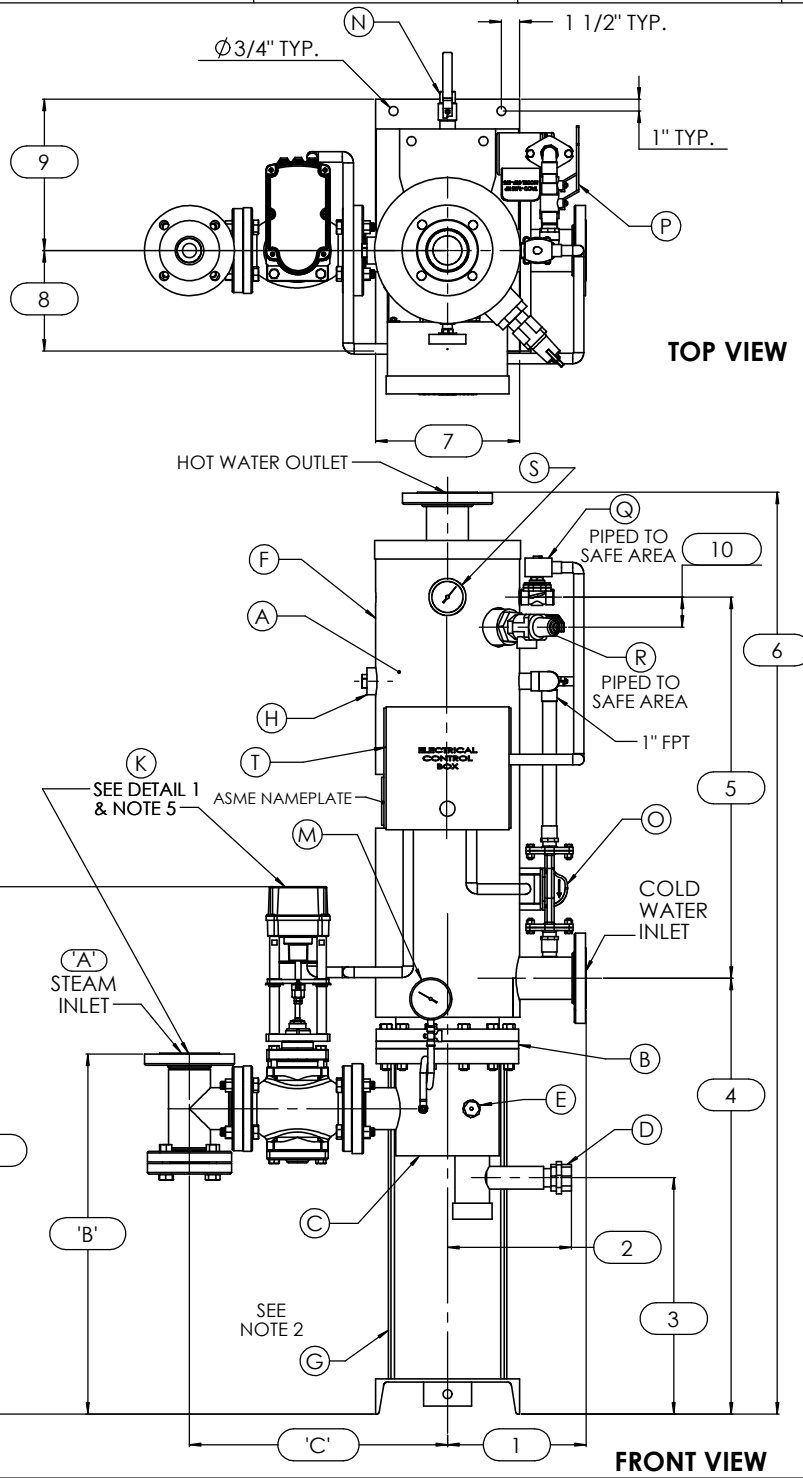
C

B

A



ISOMETRIC VIEW



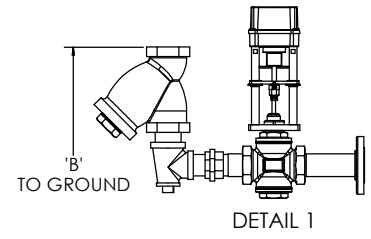
TOP VIEW

FRONT VIEW

NOTES:

1. REFER TO PRODUCT SPECIFICATION FOR DESCRIPTION OF LETTERED ITEMS.
2. **CONDENSATE:** CONDENSATE IS TO BE PIPED FROM HEATER WITHOUT LIFTS TO A VENTED RECEIVER OR DRAIN BELOW THE ELEVATION OF THE HEATER'S CONDENSATE OUTLET.
3. **INSTALLATION:** ALL COMPONENTS SHOWN HERE ARE PREWIRED & PREPIPED BY ACE HEATERS, LLC. CUSTOMER WILL ONLY NEED TO PLUMB WATER TO BE HEATED, PIPE STEAM AND CONDENSATE LINES, AND BRING ELECTRICITY TO UNIT.
4. DIMENSIONS ARE SUBJECT TO CHANGE. CONSULT FACTORY FOR TIGHT DIMENSIONS.
5. THIS CONFIGURATION CHANGES FOR VALVE SIZE 1/2" TO 2". SEE DETAIL 1 FOR REFERENCE.

APPROX. EMPTY WT:



DETAIL 1



	CERTIFIED BY	
	Ace Heaters, LLC www.aceheatingllc.com	
	MAXIMUM ALLOWABLE WORKING PRESSURE SHELL 150 PSI @ 210 °F TUBES 150 PSI @ 370 °F MIN. D.M.T. 0 °F @ 150 PSI S/N _____ YEAR BUILT	
	MODEL _____ CAPACITY _____ GAL SA _____ SQFT JOB NO. _____ XXX	



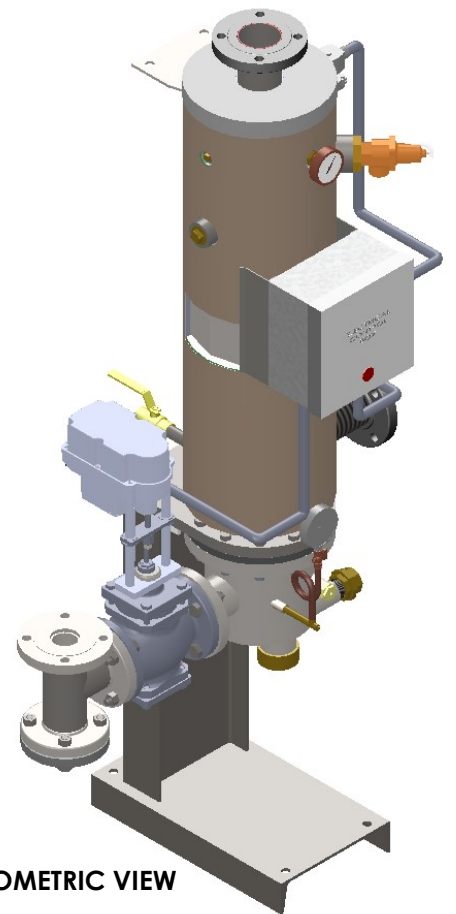
ASME SECTION VIII DIV 1 DESIGN PRESSURE: (150) psig TEST PRESSURE: (195) psig MAX DESIGN TEMPERATURE: 370 °F		
DESIGN	NAME	DATE
CHKD		
APPD		
MRG		
QA		

Ace Heaters, LLC www.aceheaters.com	
MATERIAL:	TITLE: SIVSW - COVER
FINISH:	MINIPACK SYSTEM - VERTICAL SW
WEIGHT:	STEAM ELECTRIC VALVE
PACKAGE	
UNLESS OTHERWISE SPECIFIED DIMENSIONS ARE IN INCHES TOLERANCE DECIMALS ANGULAR	DWG NO. SIVSWSE
XX ± .010 MAX SURF	REV. 02
SCALE: NA	SHEET: 1 OF 2

SIVSWSE, STEAM ELECTRIC OPERATED VALVE PACKAGE SIZE AND LOCATION

MP SIZE		4	5	6	8	8L	10	10L	12	12L	14	14L	16	16L
ITEMS	1	9 1/2	11 1/2	12	11 9/16	11 9/16	13 7/16	13 7/16	14 7/16	14 7/16	15 3/4	15 3/4	17 5/8	17 5/8
D	2	4 7/16	7 5/8	8	10 5/16	10 5/16	9 5/16	10 3/8	11 9/16	11 9/16	14 1/8	14 1/8	15 3/8	15 3/8
I	3	25 3/8	19 1/8	26 5/8	19 11/16	19 11/16	20 1/8	20 1/8	16 1/8	16 1/8	21 3/8	21 3/8	30 1/8	30 1/8
M	4	39 13/16	33 9/16	41 13/16	36 5/16	43 5/16	30 5/8	44 15/16	41 5/8	53 5/8	48 5/8	63 7/8	60 5/8	74 5/8
E	5	36	30	36 3/4	31 3/4	37 3/4	32 1/2	38 1/2	33 1/4	45 1/4	40 1/2	55 3/4	50 1/2	65 3/4
S	6	82 15/16	69 11/16	85 13/16	75 5/16	88 5/16	79 1/4	92 1/4	83 1/4	107 1/4	98 1/4	128 1/2	121 3/4	149 3/4
I	7	12	12	12	12	12	18	18	18	18	18	18	18	18
O	8	12 3/16	11 1/16	10 3/8	9 1/4	9 1/4	13 11/16	13 11/16	12	12	15 1/4	15 1/4	13 1/2	13 1/2
N	9	8 13/16	9 15/16	10 5/8	11 3/4	11 3/4	13 5/16	13 5/16	15	15	14 3/4	14 3/4	16 1/2	16 1/2
S	10	2 1/2	2 1/2	2 1/2	2 1/2	2 1/2	2 1/2	2 1/2	2 1/2	2 1/2	2 1/2	2 1/2	2 1/2	2 1/2
INLET PIPE SIZE		2 THR.	2 1/2 FLG.	2 1/2 FLG.	3 FLG.	3 FLG.	4 FLG.	4 FLG.	4 FLG.	4 FLG.	5 FLG.	5 FLG.	6 FLG.	6 FLG.
OUTLET PIPE SIZE		2 THR.	2 1/2 FLG.	2 1/2 FLG.	3 FLG.	3 FLG.	4 FLG.	4 FLG.	4 FLG.	4 FLG.	5 FLG.	5 FLG.	6 FLG.	6 FLG.

VALVE SIZE		VALVE SIZE AND OVERALL LOCATION													
1/2"	'A'	3/4													
	'B'	35 3/8	29 1/8	36 7/8	30 5/8	37 5/8	31 7/16	38 7/16	31 5/16	43 5/16	37 15/16	52 15/16	48 5/16	62 5/16	
	'C'	18	18 1/2	18 3/4	19 3/4	19 3/4	22 1/4	22 1/4	23 3/4	23 3/4	25 3/4	27 3/4	27 3/4	32 3/4	
	'D'	45 15/16	39 11/16	47 7/16	41 3/16	48 3/16	42	49	41 7/8	53 7/8	48 1/2	63 1/2	58 7/8	72 7/8	
3/4"	'A'	1													
	'B'	36 7/16	30 3/16	37 15/16	31 11/16	38 11/16	32 1/2	39 1/2	32 3/8	44 3/8	39	54	49 3/8	63 3/8	
	'C'	18 11/16	19 3/16	19 7/16	20 7/16	20 7/16	22 15/16	22 15/16	24 7/16	24 7/16	26 7/16	26 7/16	28 7/16	28 7/16	
	'D'	45 15/16	39 11/16	47 7/16	41 3/16	48 3/16	42	49	41 7/8	53 7/8	48 1/2	63 1/2	58 7/8	72 7/8	
1"	'A'	1 1/2													
	'B'	36 7/8	30 5/8	38 3/8	32 1/8	39 1/8	32 15/16	39 15/16	32 13/16	44 13/16	39 7/16	54 7/16	49 13/16	63 13/16	
	'C'	19 7/16	19 15/16	20 3/16	21 3/16	21 3/16	23 11/16	23 11/16	25 3/16	25 3/16	27 3/16	27 3/16	29 3/16	29 3/16	
	'D'	45 15/16	39 11/16	47 7/16	41 3/16	48 3/16	42	49	41 7/8	53 7/8	48 1/2	63 1/2	58 7/8	72 7/8	
1 1/4"	'A'	1 1/2													
	'B'	37 7/8	31 5/8	39 3/8	33 1/8	40 1/8	33 15/16	40 15/16	33 13/16	45 13/16	40 7/16	55 7/16	50 13/16	64 13/16	
	'C'	20 15/16	21 7/16	21 11/16	22 11/16	22 11/16	25 3/16	25 3/16	26 11/16	26 11/16	28 11/16	28 11/16	30 11/16	30 11/16	
	'D'	46 9/16	40 5/16	48 1/16	41 13/16	48 13/16	42 5/8	49 5/8	42 1/2	54 1/2	49 1/8	64 1/8	59 1/2	73 1/2	
1 1/2"	'A'	2													
	'B'	39 7/16	33 3/16	40 15/16	34 11/16	41 11/16	35 1/2	42 1/2	35 3/8	47 3/8	42	57	52 3/8	66 3/8	
	'C'	21 5/8	22 1/8	22 3/8	23 3/8	23 3/8	25 7/8	25 7/8	27 3/8	27 3/8	29 3/8	29 3/8	31 3/8	31 3/8	
	'D'	46 9/16	40 5/16	48 1/16	41 13/16	48 13/16	42 5/8	49 5/8	42 1/2	54 1/2	49 1/8	64 1/8	59 1/2	73 1/2	
2"	'A'	2 1/2													
	'B'	41 7/16	35 3/16	42 15/16	36 11/16	43 11/16	37 1/2	44 1/2	37 3/8	49 3/8	44	59	54 3/8	68 3/8	
	'C'	23 1/2	24	24 1/4	25 1/4	25 1/4	27 3/4	27 3/4	29 1/4	29 1/4	31 1/4	31 1/4	33 1/4	33 1/4	
	'D'	46 13/16	40 9/16	48 5/16	42 1/16	49 1/16	42 7/8	49 7/8	42 3/4	54 3/4	49 3/8	64 3/8	59 3/4	73 3/4	
2 1/2"	'A'	3													
	'B'	N/A	30 1/16	37 13/16	31 9/16	38 9/16	32 3/8	39 3/8	32 1/4	44 1/4	38 7/8	53 7/8	49 1/4	63 1/4	
	'C'	N/A	21 7/8	22 1/8	23 1/8	23 1/8	25 5/8	25 5/8	27 1/8	27 1/8	29 1/8	29 1/8	31 1/8	31 1/8	
	'D'	N/A	42 15/16	50 11/16	44 7/16	51 7/16	45 1/4	52 1/4	45 1/8	57 1/8	51 3/4	66 3/4	62 1/8	76 1/8	
3"	'A'	4													
	'B'	N/A	N/A	38 7/8	32 5/8	39 5/8	33 7/16	40 7/16	33 5/16	45 5/16	39 15/16	54 15/16	50 5/16	64 5/16	
	'C'	N/A	N/A	23 7/8	24 7/8	24 7/8	27 3/8	27 3/8	28 7/8	28 7/8	30 7/8	30 7/8	32 7/8	32 7/8	
	'D'	N/A	N/A	51 5/16	45 1/16	52 1/16	45 7/8	52 7/8	45 3/4	57 3/4	52 3/8	67 3/8	62 3/4	76 3/4	
4"	'A'	6													
	'B'	N/A	N/A	N/A	34 9/16	41 9/16	35 3/8	42 3/8	35 1/4	47 1/4	41 7/8	56 7/8	52 1/4	66 1/4	
	'C'	N/A	N/A	N/A	29 1/8	29 1/8	31 5/8	31 5/8	33 1/8	33 1/8	35 1/8	35 1/8	37 1/8	37 1/8	
	'D'	N/A	N/A	N/A	46 3/16	53 3/16	47	54	46 7/8	58 7/8	53 1/2	68 1/2	63 7/8	77 7/8	
5"	'A'	6													
	'B'	N/A	N/A	N/A	N/A	N/A	35 3/8	42 3/8	35 1/4	47 1/4	41 7/8	56 7/8	52 1/4	66 1/4	
	'C'	N/A	N/A	N/A	N/A	N/A	35 1/8	35 1/8	36 5/8	36 5/8	38 5/8	38 5/8	40 5/8	40 5/8	
	'D'	N/A	N/A	N/A	N/A	N/A	47 1/2	54 1/2	47 3/8	59 3/8	54	69	64 3/8	78 3/8	



ISOMETRIC VIEW



a nudyne company

Ace Heaters, LLC
www.aceheaters.com



ASME SECTION VIII DIV 1		
DESIGN PRESSURE : (150) psig		
TEXT PRESSURE : (100) psig		
MAX DESIGN TEMPERATURE : 370 °F		
DRWN	K. JIMENEZ	04/12/2023
CRKD		
APPD		
MRG		
QA		

MATERIAL :	TITLE : SIVSW - COVER MINIPACK SYSTEM - VERTICAL SW STEAM ELECTRIC VALVE PACKAGE
FINISH :	
WEIGHT :	
UNLESS OTHERWISE SPECIFIED DIMENSIONS ARE IN INCHES TOLERANCE	
DECIMALS .XX ± .01	ANGULAR ± .5
SCALE : NA	SHEET : 20F 2
DWG NO. SIVSWSE-DIM	REV. 02

NOTES:
 1/ DIMENSIONS IN INCHES, AND SUBJECT TO CHANGE WITHOUT NOTICE.
 2/ DIM 'B', 'C', 'D' ARE TO BE APPROXIMATED ONLY, CONSULT FACTORY FOR TIGHT DIMENSIONS.

THE INFORMATION CONTAINED WITHIN THIS DRAWING IS PROPRIETARY AND THE SOLE PROPERTY OF ACE HEATERS, LLC. ANY REPRODUCTION IN PART OR AS A WHOLE WITHOUT THE WRITTEN PERMISSION OF ACE HEATERS, LLC IS PROHIBITED.