



# AJAX E-1250B High Efficiency Gas Condensing Boiler

## Submittal Sheet

Section 1 - Specifications  
Section 2 - Dimensions  
Section 3 - Electrical

Project Name: \_\_\_\_\_ Date: \_\_\_\_\_  
Location: \_\_\_\_\_  
Engineer: \_\_\_\_\_  
Contractor: \_\_\_\_\_ Rep: \_\_\_\_\_

## 1 SPECIFICATIONS

### General Specifications

#### ► Product Features

- Certified to ANSI Z21.13 / CSA 4.9 Gas Boiler Standard
- ASME "H" stamped, designed and constructed in compliance with the ASME Boiler and Pressure Vessel Code Section IV
- SA-249 TP316L Stainless Steel Heat Exchanger
- Maximum System Water Pressure 160 psi [1100 kPa]
- Field conversion from Natural Gas (factory) to Propane
- Modulating Burner, 8:1 Turndown, Low Nox emissions <20ppm
- Direct Spark Ignition, Sealed Combustion
- Outdoor Model Std. with Freeze Protection
- Easy serviceability

#### ► Factory Supplied Items

- 30PSI ASME Pressure Relief Valve
- ANSI Flange Adapters

#### ► Control Features

- Integrated cascade manager up to 16 units
- Optimized connectivity options (0-10V, Modbus, etc.)
- Low Water Flow Safety Control and Indication

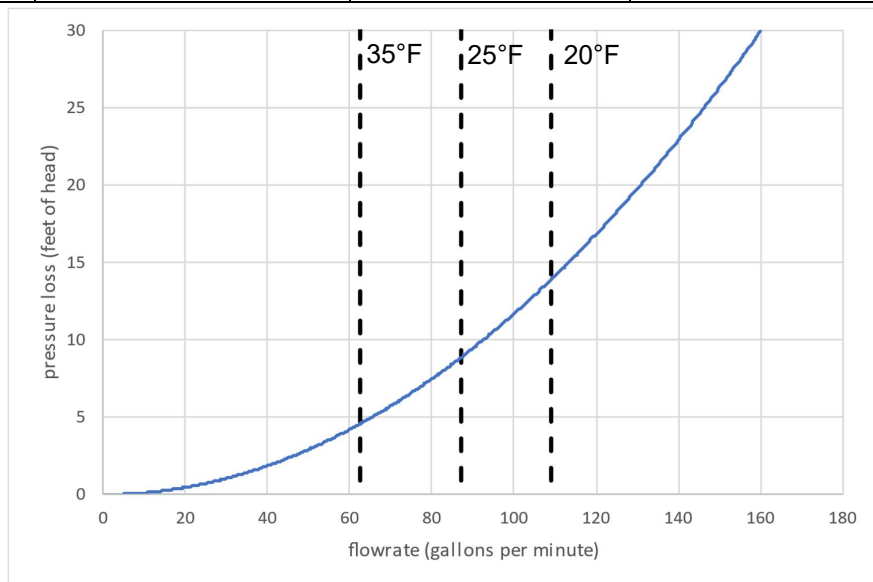
#### ► Touchscreen Features

- Performance Graphs for Single and Cascaded units
- Live status screen for 10+ values (temp, flow rate, etc.)

Water Connections ANSI FLG, in.	Gas Connection NPT, in.	Vent/Air-inlet Pipe Diameter, in.	Vent/Air-inlet Max. Length, NG/LP, ft.	Approx. Weight with Water, lb.
2 ½	2 (Male)	8	150 / 150	1084

### Performance Specifications

Input Modulation, MBH	Gross Output, MBH	AHRI Net Rating, MBH	Combustion Efficiency, %	Thermal Efficiency, %
156 – 1250	1200	1043	96.6	97



Ace Heaters  
130 Klug Circle, Corona CA 92878  
Phone: (951) 738-2230 Fax: (951) 281-4959 Web: <http://www.aceheaters.com/>  
Ace Heaters reserves the right to change these specifications without notice

Version Date : 2024-02-15



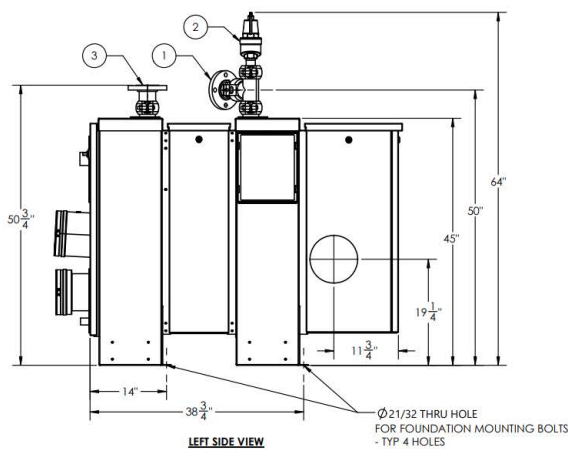
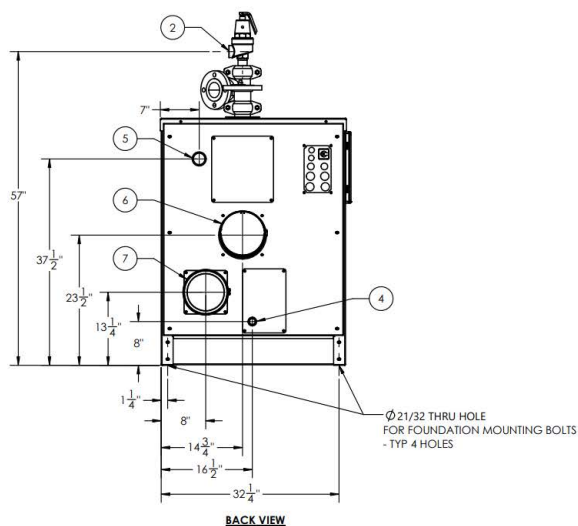
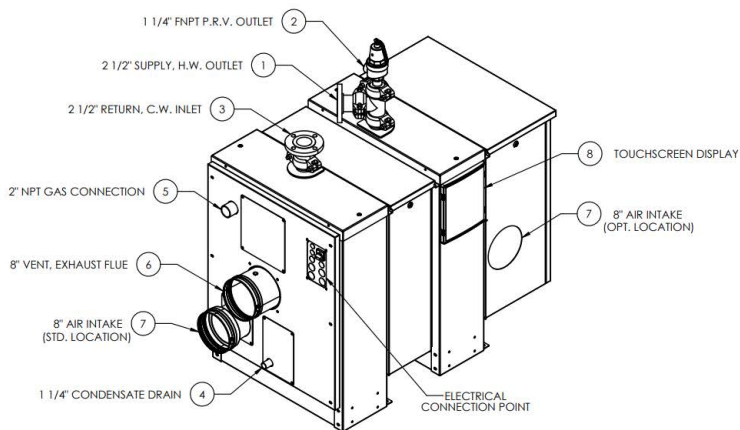
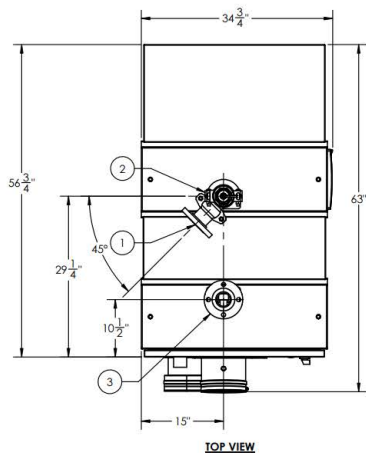
# AJAX E-1250B High Efficiency Gas Condensing Boiler

## Submittal Sheet

Section 1 - Specifications  
Section 2 - Dimensions  
Section 3 - Electrical

## 2 DIMENSIONS

### Product Dimensions – in.



### Installation and Service Clearances (Minimum / Recommended) – in.

Top	Front	Left	Right	Back	Bottom
20/36	20/36	24/36	2/36	20/36	0/0





# AJAX E-1250B High Efficiency Gas Condensing Boiler

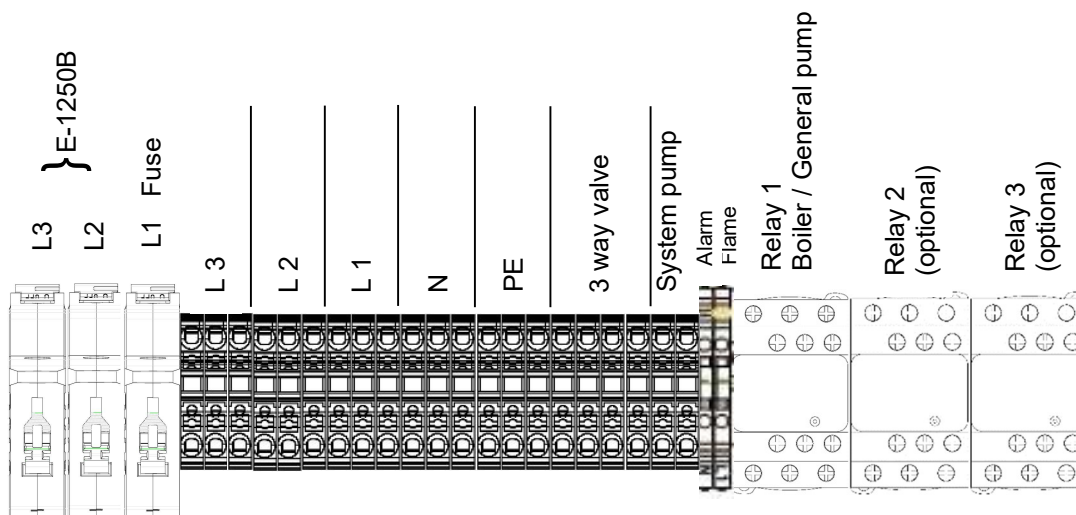
## Submittal Sheet

Section 1 - Specifications  
Section 2 - Dimensions  
Section 3 - Electrical

### 3 ELECTRICAL

#### Mains Voltage Connections:

- ▶ 120VAC / 1 Phase / 60 Hz / 4.7A (Standard)
- ▶ 208VAC / 3 Phase / 60 Hz / \_\_\_\_A (Amperage dependent on selected system pump)
  - Applicable based on pump selection. Note: Pumps are field supplied.
  - No internal modifications needed.
  - Simply wire 208VAC / 3Phase / 60Hz from the main power supply to the unit and the unit itself is fully ready to transfer that to the pump connections.
- ▶ The boiler circulator (Heating or DHW) can be mounted to relay 1 in the electrical housing. When more circulators are needed (a system circulator, or a DHW circulator with a heating boiler) extra relays must be applied. These are available as an accessory.



#### Low Voltage Connections:

29	28	27	26	25	24	23	22	21	20	19	18	17	16	15	14	13	12	11	10	9	8	7	6	5	4	3	2	1
						-	+	-	+	Gnd		Gnd	+	-	+			-	+	B	A	Gnd						
Safety switch 2		Safety switch 1		Flue Damper		LWCO Extern		AL-BUS managing boiler		Pump control PWM		Pump control 0-10V		0-10 Vdc		On/Off thermostat or modulating thermostat		AL-BUS depending boiler		Modbus			DHW sensor		System sensor		Outdoor sensor	
Interrupteur de sécurité 2		Interrupteur de sécurité 1		Clapet de cheminée		Eau basse coupure à l'extérieur		AL-BUS chaudière gérant		Commande de pompe PWM		Commande de pompe 0-10V		0-10 Vcc		Thermostat marche/ arrêt ou thermostat modulant		AL-BUS chaudière dépendant					Capteur ECS		Capteur de système		Capteur extérieur	

