

8

7

6

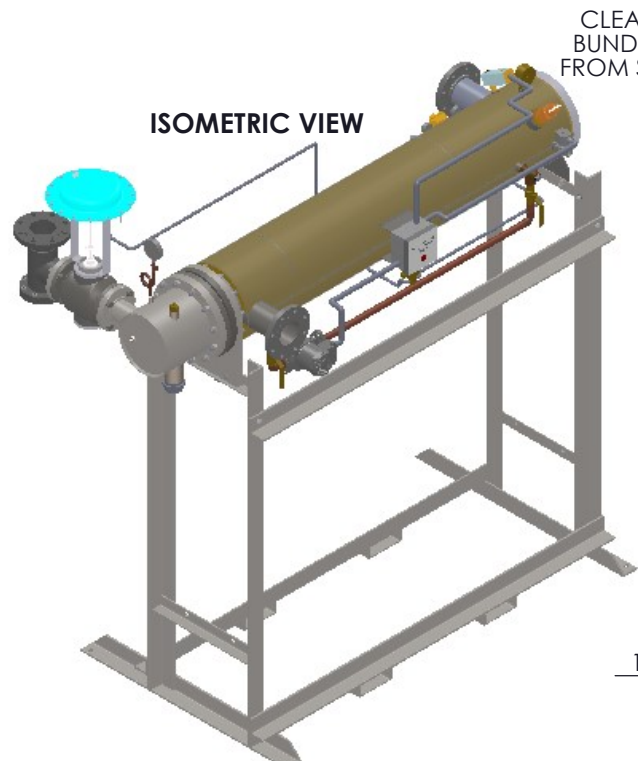
5

4

3

2

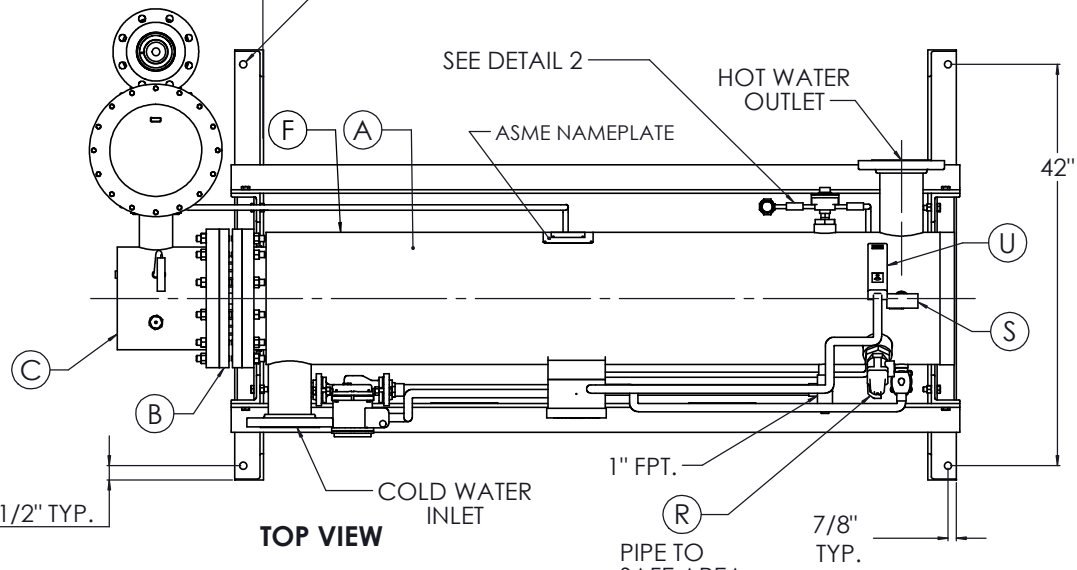
1



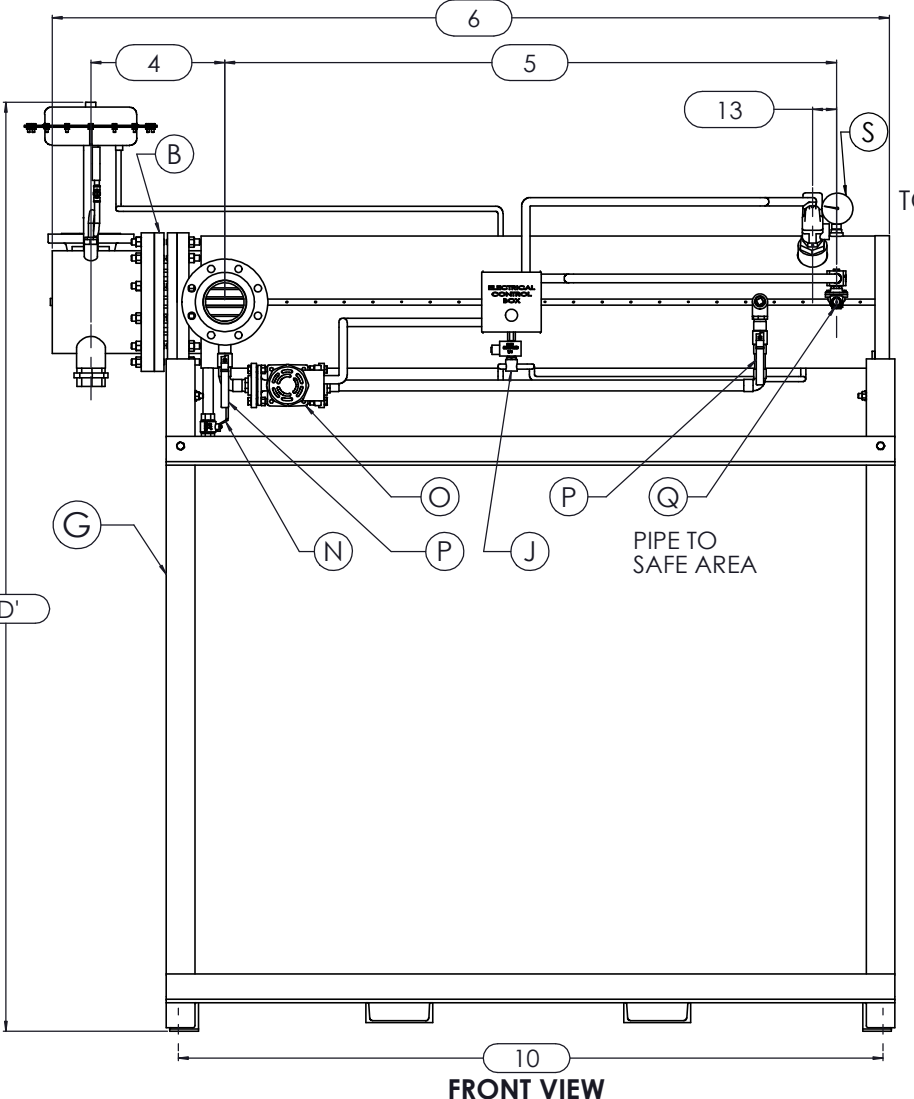
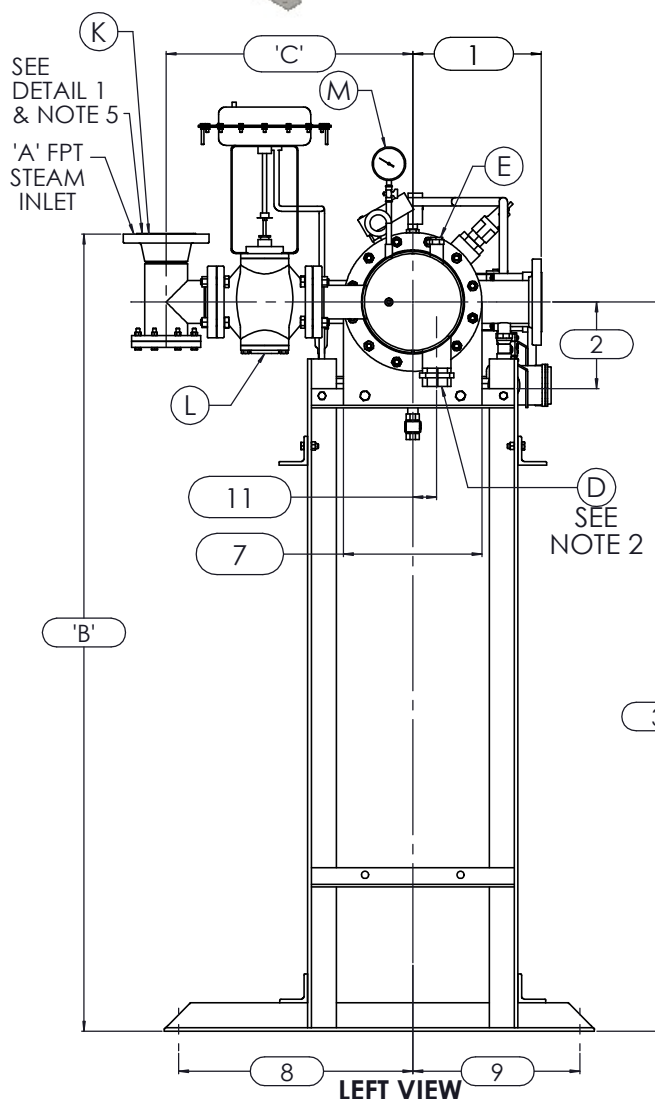
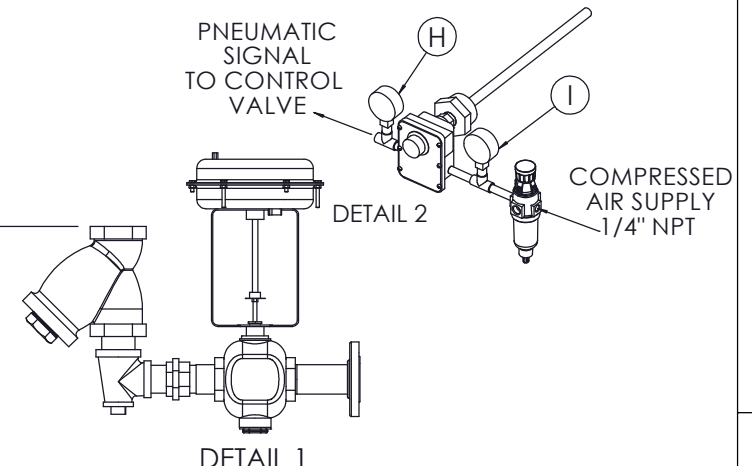
CLEARANCE FOR BUNDLE REMOVAL FROM SHELL FLANGE

12

Ø 3/4" BOLT HOLE TYP. 4



- NOTES:
1. REFER TO PRODUCT SPECIFICATION FOR DESCRIPTION OF LETTERED ITEMS.
 2. **CONDENSATE:** CONDENSATE IS TO BE PIPED FROM HEATER WITHOUT LIFTS TO A VENTED RECEIVER OR DRAIN BELOW THE ELEVATION OF THE HEATER'S CONDENSATE OUTLET.
 3. **INSTALLATION:** ALL COMPONENTS SHOWN HERE ARE PREWIRED & PREPIPED BY ACE HEATERS, LLC. CUSTOMER WILL ONLY NEED TO PLUMB WATER TO BE HEATED, PIPE STEAM AND CONDENSATE LINES, AND BRING ELECTRICITY TO UNIT.
 4. DIMENSIONS ARE SUBJECT TO CHANGE. CONSULT FACTORY FOR TIGHT DIMENSIONS.
 5. THIS CONFIGURATION CHANGES FOR VALVE SIZE 1/2" TO 2". SEE DETAIL 1 FOR REFERENCE. APPROX. EMPTY WT:



| | | |
|--|--|--|
| | CERTIFIED BY | |
| | Ace Heaters, LLC www.aceheatingllc.com | |
| | MAXIMUM ALLOWABLE WORKING PRESSURE SHELL 150 PSI @ 210 °F TUBES 150 PSI @ 370 °F MIN. D.M.T. 0 °F @ 150 PSI S/N _____ YEAR BUILT _____ | |
| | MODEL _____ CAPACITY _____ GAL SA. SQFT JOB NO. _____ XXX | |



| | |
|--|------------|
| ASME SECTION VIII DIV 1: DESIGN PRESSURE: (150) psig TEST PRESSURE: (195) psig MAX DESIGN TEMPERATURE: 370 °F | |
| NAME | DATE |
| DRAWN: K. JIMENEZ | 04/12/2023 |
| CHDL | |
| APP'D | |
| SEC | |
| QA | |

| | |
|---|----------|
| MATERIAL: | |
| FINISH: | |
| WEIGHT: | |
| UNLESS OTHERWISE SPECIFIED DIMENSIONS ARE IN INCHES | |
| TOLERANCE | |
| DECIMALS | ANGULAR |
| .XX ± .05 | ± .5 |
| .XXX ± .010 | MAX SURF |

| | |
|--|---------------|
| Ace Heaters, LLC www.aceheaters.com | |
| TITLE: SIHDW - COVER MINIPACK SYSTEM-HORIZONTAL DW STEAM- PNEUMATIC OPERATED VALVE PACKAGE-SINGLE UNIT ON DUAL RACK | |
| DWG NO. | REV. |
| SIHDWSA-1-DR | 02 |
| SCALE: N/A | S/O # |
| | SHEET: 1 OF 2 |

THE INFORMATION CONTAINED WITHIN THIS DRAWING IS PROPRIETARY AND THE SOLE PROPERTY OF ACE HEATERS, LLC. ANY REPRODUCTION IN PART OR AS A WHOLE WITHOUT THE WRITTEN PERMISSION OF ACE HEATERS, LLC IS PROHIBITED.

8

7

6

5

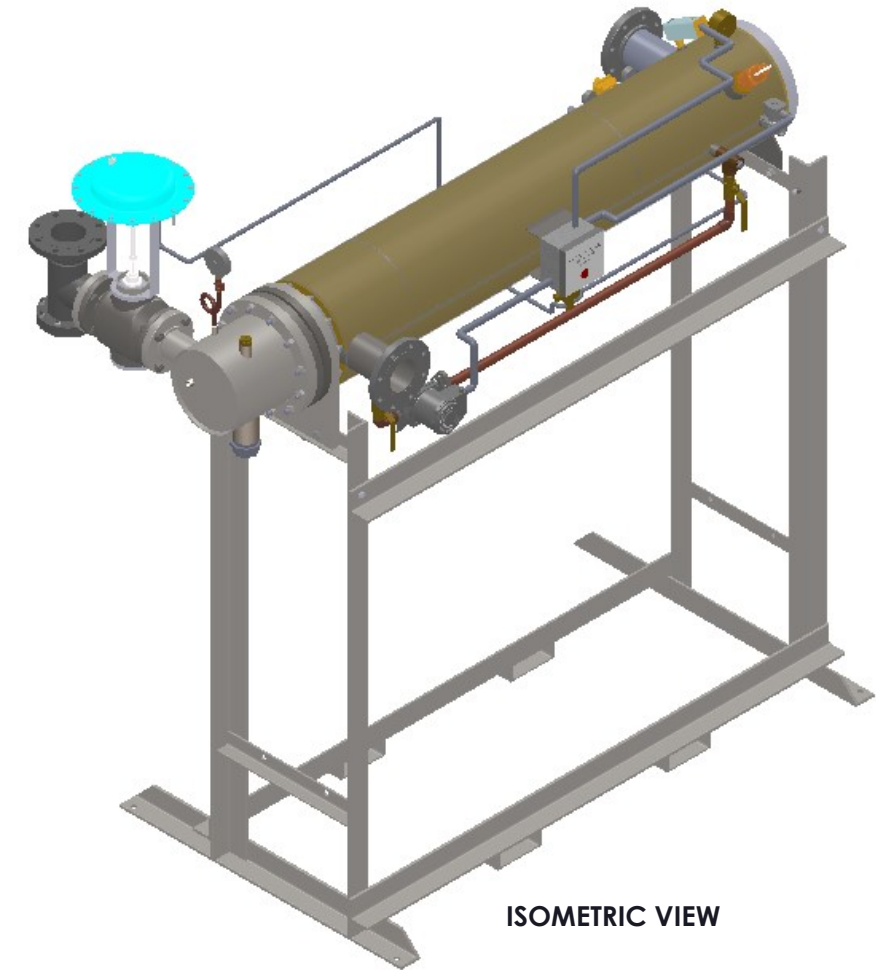
4

3

2

1

| | | 8 | 7 | 6 | 5 | 4 | 3 | 2 | 1 |
|---|------------------|---------------------------------|------------|----------|----------|----------|----------|----------|-----------|
| SIHDWSA-1-DR, DW - STEAM - PNEUMATIC VALVE PACKAGE - SINGLE UNIT ON RACK | | | | | | | | | |
| | | MP SIZE | 5 | 6 | 8 | 10 | 12 | 14 | 16 |
| DIMENSION | ITEMS | 1 | 10 | 10 1/2 | 11 1/2 | 13 1/2 | 14 1/2 | 15 1/2 | 16 1/2 |
| | | 2 | 7 11/16 | 8 3/16 | 10 1/8 | 10 13/16 | 12 1/2 | 12 1/4 | 14 |
| | | 3 | 59 15/16 | 60 7/16 | 62 3/8 | 76 1/16 | 77 3/4 | 77 1/2 | 79 1/4 |
| | | 4 | 10 5/8 | 11 1/4 | 12 1/8 | 13 3/8 | 15 5/8 | 17 11/16 | 18 9/16 |
| | | 5 | 61 1/2 | 62 | 61 3/4 | 64 | 62 1/2 | 72 | 75 3/4 |
| | | 6 | 80 3/16 | 81 5/16 | 83 9/16 | 87 1/8 | 94 7/16 | 104 1/16 | 110 15/16 |
| | | 7 | 8 3/4 | 9 7/8 | 11 7/8 | 14 1/2 | 16 5/8 | 18 1/2 | 20 |
| | | 8 | 26 1/2 | 26 1/2 | 26 1/2 | 26 1/2 | 26 1/2 | 26 1/2 | 26 1/2 |
| | | 9 | 15 1/2 | 15 1/2 | 15 1/2 | 15 1/2 | 15 1/2 | 15 1/2 | 15 1/2 |
| | | 10 | 68 1/4 | 69 3/8 | 70 3/8 | 71 7/8 | 74 5/16 | 82 15/16 | 82 15/16 |
| | | 11 | 1 3/8 | 1 1/2 | 2 1/16 | 2 1/2 | 3 1/16 | 3 1/8 | 3 1/4 |
| | | 12 | 64 | 64 | 64 | 64 | 64 | 75 | 80 |
| | | 13 | 2 1/2 | 2 1/2 | 2 1/2 | 2 1/2 | 2 1/2 | 2 1/2 | 2 1/2 |
| | INLET PIPE SIZE | 2 1/2 FLG. | 2 1/2 FLG. | 3 FLG. | 4 FLG. | 4 FLG. | 5 FLG. | 6 FLG. | |
| | OUTLET PIPE SIZE | 2 1/2 FLG. | 2 1/2 FLG. | 3 FLG. | 4 FLG. | 4 FLG. | 5 FLG. | 6 FLG. | |
| | | VALVE SIZE AND OVERALL LOCATION | | | | | | | |
| VALVE SIZE | ITEM | | | | | | | | |
| | 'A' | 3/4 | | | | | | | |
| | 1/2" | 'B' | 65 1/8 | 65 5/8 | 67 9/16 | 81 1/4 | 82 15/16 | 82 11/16 | 84 7/16 |
| | | 'C' | 20 5/16 | 20 9/16 | 21 9/16 | 24 1/16 | 25 9/16 | 27 9/16 | 29 9/16 |
| | | 'D' | 75 3/4 | 76 1/4 | 78 3/16 | 91 7/8 | 93 9/16 | 93 5/16 | 95 1/16 |
| | | 'A' | 1 | | | | | | |
| | 3/4" | 'B' | 66 3/16 | 66 11/16 | 68 5/8 | 82 5/16 | 84 | 83 3/4 | 85 1/2 |
| | | 'C' | 21 5/16 | 21 9/16 | 22 9/16 | 25 1/16 | 26 9/16 | 28 9/16 | 30 9/16 |
| | | 'D' | 75 3/4 | 76 1/4 | 78 3/16 | 91 7/8 | 93 9/16 | 93 5/16 | 95 1/16 |
| | | 'A' | 1 1/4 | | | | | | |
| | 1" | 'B' | 66 5/8 | 67 1/8 | 69 1/16 | 82 3/4 | 84 7/16 | 84 3/16 | 85 15/16 |
| | | 'C' | 22 1/8 | 22 3/8 | 23 3/8 | 25 7/8 | 27 3/8 | 29 3/8 | 31 3/8 |
| 'D' | | 75 3/4 | 76 1/4 | 78 3/16 | 91 7/8 | 93 9/16 | 93 5/16 | 95 1/16 | |
| 'A' | | 1 1/2 | | | | | | | |
| 1 1/4" | 'B' | 67 5/8 | 68 1/8 | 70 1/16 | 83 3/4 | 85 7/16 | 85 3/16 | 86 15/16 | |
| | 'C' | 21 7/16 | 21 11/16 | 22 11/16 | 25 3/16 | 26 11/16 | 28 11/16 | 30 11/16 | |
| | 'D' | 75 3/4 | 76 1/4 | 78 3/16 | 91 7/8 | 93 9/16 | 93 5/16 | 95 1/16 | |
| | 'A' | 2 | | | | | | | |
| 1 1/2" | 'B' | 69 3/16 | 69 11/16 | 71 5/8 | 85 5/16 | 87 | 86 3/4 | 88 1/2 | |
| | 'C' | 22 1/16 | 22 5/16 | 23 5/16 | 25 13/16 | 27 5/16 | 29 5/16 | 31 5/16 | |
| | 'D' | 76 1/2 | 77 | 78 15/16 | 92 5/8 | 94 5/16 | 94 1/16 | 95 13/16 | |
| | 'A' | 2 1/2 | | | | | | | |
| 2" | 'B' | 71 3/16 | 71 11/16 | 73 5/8 | 87 5/16 | 89 | 88 3/4 | 90 1/2 | |
| | 'C' | 24 1/4 | 24 1/2 | 25 1/2 | 28 | 29 1/2 | 31 1/2 | 33 1/2 | |
| | 'D' | 78 3/16 | 78 11/16 | 80 5/8 | 94 5/16 | 96 | 95 3/4 | 97 1/2 | |
| | 'A' | 3 | | | | | | | |
| 2 1/2" | 'B' | 66 1/16 | 66 9/16 | 68 1/2 | 82 3/16 | 83 7/8 | 83 5/8 | 85 3/8 | |
| | 'C' | 20 1/4 | 20 1/2 | 21 1/2 | 24 | 25 1/2 | 27 1/2 | 29 1/2 | |
| | 'D' | 78 15/16 | 79 7/16 | 81 3/8 | 95 1/16 | 96 3/4 | 96 1/2 | 98 1/4 | |
| | 'A' | 4 | | | | | | | |
| 3" | 'B' | N/A | 67 5/8 | 69 9/16 | 83 1/4 | 84 15/16 | 84 11/16 | 86 7/16 | |
| | 'C' | N/A | 22 5/16 | 23 5/16 | 25 13/16 | 27 5/16 | 29 5/16 | 31 5/16 | |
| | 'D' | N/A | 81 5/16 | 83 1/4 | 96 15/16 | 98 5/8 | 98 3/8 | 100 1/8 | |
| | 'A' | 6 | | | | | | | |
| 4" | 'B' | N/A | N/A | 71 1/2 | 85 3/16 | 86 7/8 | 86 5/8 | 88 3/8 | |
| | 'C' | N/A | N/A | 27 3/16 | 29 11/16 | 31 3/16 | 33 3/16 | 35 3/16 | |
| | 'D' | N/A | N/A | 85 1/4 | 98 15/16 | 100 5/8 | 100 3/8 | 102 1/8 | |
| | 'A' | 6 | | | | | | | |
| 5" | 'B' | N/A | N/A | N/A | 85 3/16 | 86 7/8 | 86 5/8 | 88 3/8 | |
| | 'C' | N/A | N/A | N/A | 33 5/16 | 34 13/16 | 36 13/16 | 38 13/16 | |
| | 'D' | N/A | N/A | N/A | 98 15/16 | 100 5/8 | 100 3/8 | 102 1/8 | |
| | 'A' | 6 | | | | | | | |



ISOMETRIC VIEW

NOTES:

- 1/ DIMENSIONS IN INCHES, AND SUBJECT TO CHANGE WITHOUT NOTICE.
- 2/ DIM 'B', 'C', 'D' ARE TO BE APPROXIMATED ONLY, CONSULT FACTORY FOR TIGHT DIMENSIONS.



a nudyne company

Ace Heaters, LLC
www.aceheaters.com



| | |
|--|------------|
| ASME SECTION VIII DIV 1 : DESIGN PRESSURE : (150) psig TEST PRESSURE : (195) psig MAX DESIGN TEMPERATURE : 370 °F | |
| NAME | DATE |
| K.JIMENEZ | 04/12/2023 |
| CHLD | |
| APPVD | |
| SEC | |
| QA | |

| | | |
|---|--|------------------|
| MATERIAL : | TITLE : | SIHDW - COVER |
| FINISH : | MINIPACK SYSTEM-HORIZONTAL DW | |
| WEIGHT : | STEAM- PNEUMATIC OPERATED VALVE PACKAGE-SINGLE UNIT ON DUAL RACK | |
| UNLESS OTHERWISE SPECIFIED DIMENSIONS ARE IN INCHES | | DWG NO. |
| TOLERANCE | | SIHDWSA-1-DR-DIM |
| DECIMALS | ANGULAR | REV. |
| .XX ± .05 | ± .5 | 02 |
| .XXX ± .010 | MAX SURF | SCALE : N/A |
| | | S/O# |
| | | SHEET : 2 OF 2 |

THE INFORMATION CONTAINED WITHIN THIS DRAWING IS PROPRIETARY AND THE SOLE PROPERTY OF ACE HEATERS, LLC. ANY REPRODUCTION IN PART OR AS A WHOLE WITHOUT THE WRITTEN PERMISSION OF ACE HEATERS, LLC IS PROHIBITED.