

8

7

6

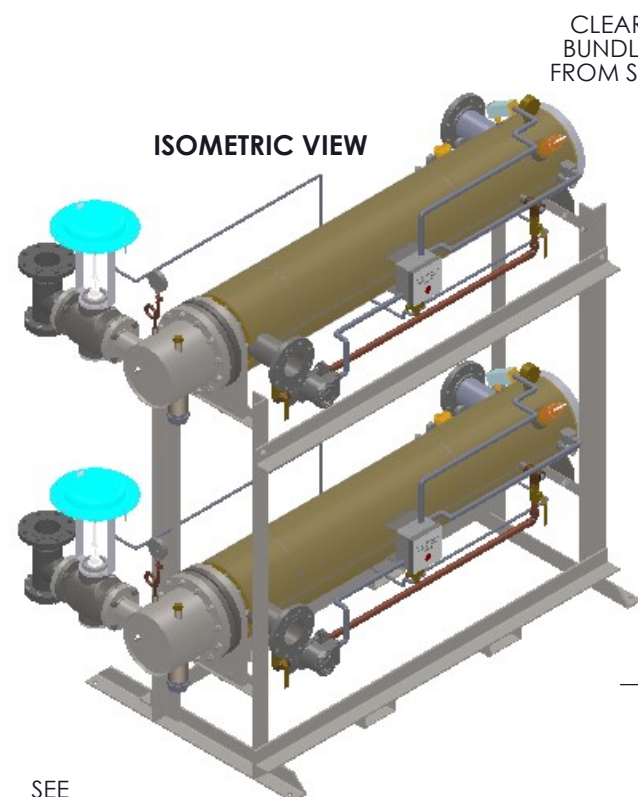
5

4

3

2

1

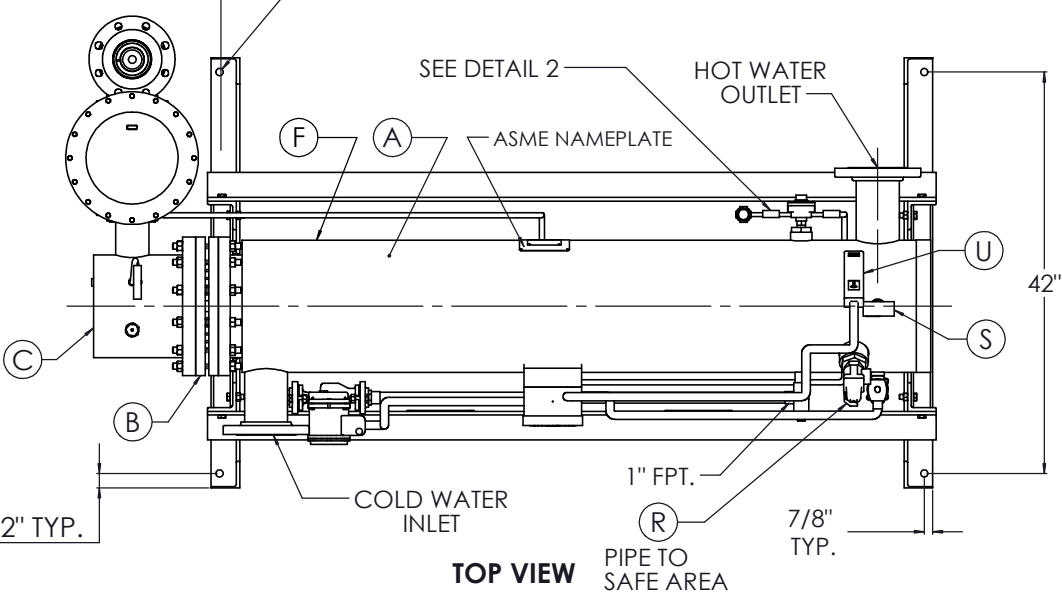


ISOMETRIC VIEW

CLEARANCE FOR BUNDLE REMOVAL FROM SHELL FLANGE

12

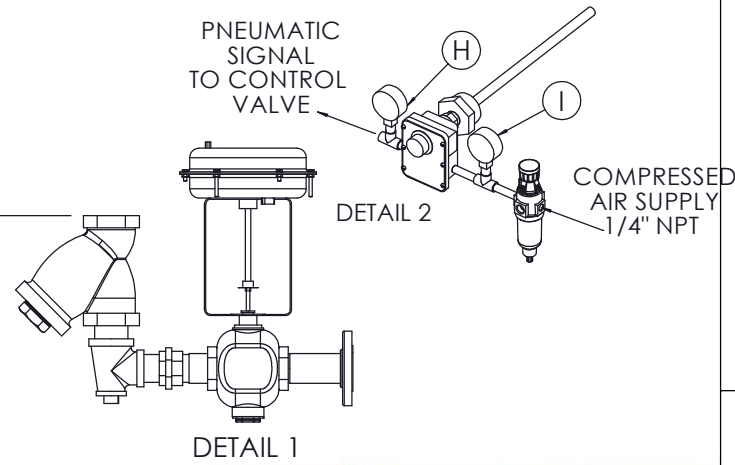
Ø3/4" BOLT HOLE TYP. 4



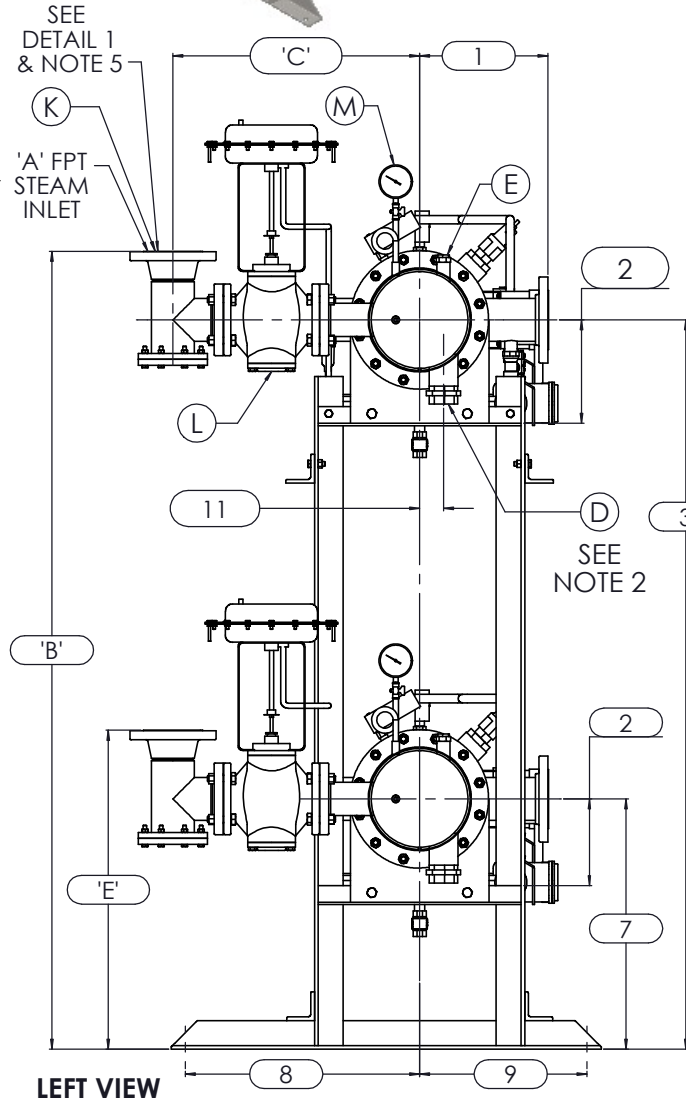
TOP VIEW

NOTES:

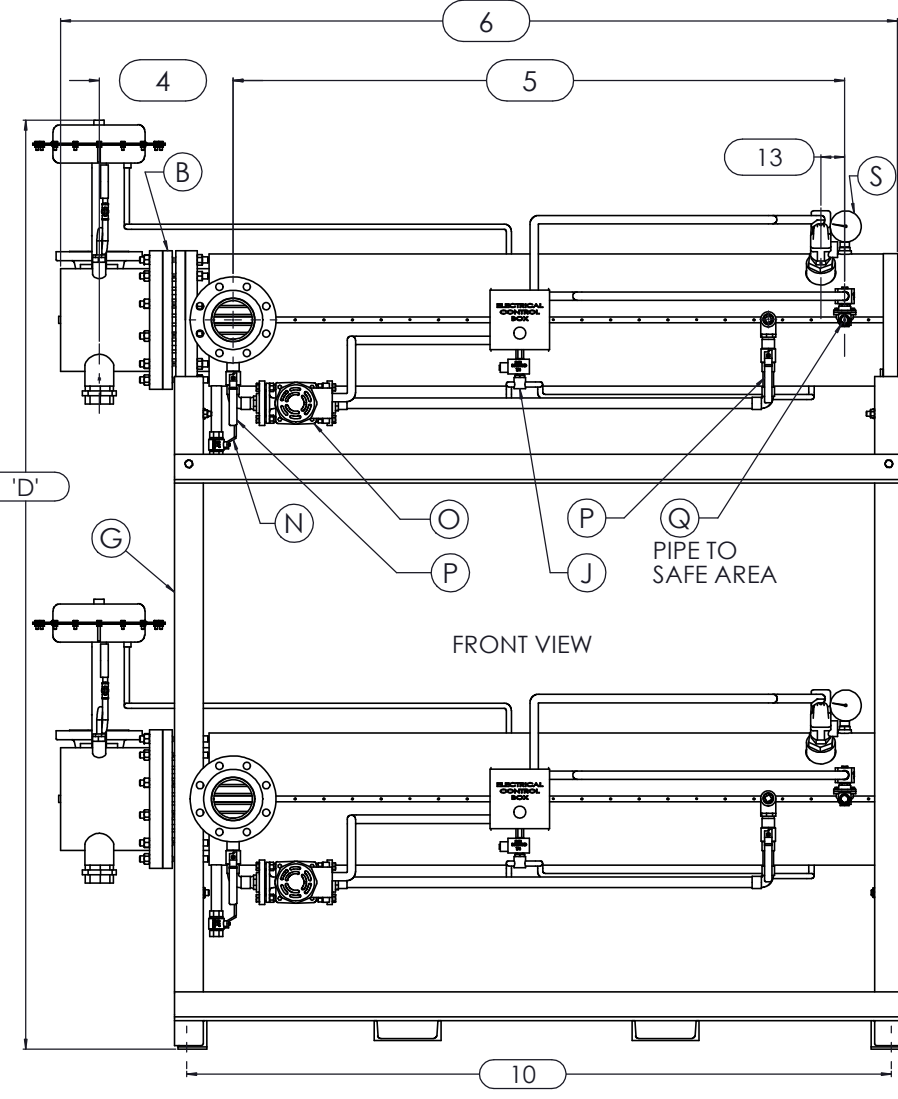
1. REFER TO PRODUCT SPECIFICATION FOR DESCRIPTION OF LETTERED ITEMS.
2. CONDENSATE: CONDENSATE IS TO BE PIPED FROM HEATER WITHOUT LIFTS TO A VENTED RECEIVER OR DRAIN BELOW THE ELEVATION OF THE HEATER'S CONDENSATE OUTLET.
3. INSTALLATION: ALL COMPONENTS SHOWN HERE ARE PREWIRED & PREPARED BY ACE HEATERS, LLC. CUSTOMER WILL ONLY NEED TO PLUMB WATER TO BE HEATED, PIPE STEAM AND CONDENSATE LINES, AND BRING ELECTRICITY TO UNIT.
4. DIMENSIONS ARE SUBJECT TO CHANGE. CONSULT FACTORY FOR TIGHT DIMENSIONS.
5. THIS CONFIGURATION CHANGES FOR VALVE SIZE 1/2" TO 2". SEE DETAIL 1 FOR REFERENCE. APPROX. EMPTY WT:



DETAIL 1



LEFT VIEW



FRONT VIEW

	CERTIFIED BY Ace Heaters, LLC www.aceheatingllc.com
	MAXIMUM ALLOWABLE WORKING PRESSURE SHELL 150 PSI @ 210 °F TUBES 150 PSI @ 370 °F MIN. D.M.T. 0 °F @ 150 PSI S/N _____ YEAR BUILT _____
	MODEL _____ CAPACITY _____ GAL SA. SQFT JOB NO. _____ XXX



ASME SECTION VIII DIV 1: DESIGN PRESSURE: (150) psig TEST PRESSURE: (195) psig MAX DESIGN TEMPERATURE: 370 °F	
NAME	DATE
DRAWN: K.JIMENEZ	04/12/2023
CHLD	
APPVD	
SEC	
QA	

MATERIAL:	TITLE: SIHDW - COVER MINIPACK SYSTEM-HORIZONTAL DW STEAM- PNEUMATIC OPERATED VALVE PACKAGE-DUAL UNIT ON DUAL RACK
FINISH:	DWG NO. SIHDWSA-2-DR
WEIGHT:	REV. 02
UNLESS OTHERWISE SPECIFIED DIMENSIONS ARE IN INCHES TOLERANCE	SCALE: N/A
DECIMALS .XX ± .05	S/O#
ANGULAR ± .5	SHEET: 1 OF 2
MAX SURF .XXX ± .010	

THE INFORMATION CONTAINED WITHIN THIS DRAWING IS PROPRIETARY AND THE SOLE PROPERTY OF ACE HEATERS, LLC. ANY REPRODUCTION IN PART OR AS A WHOLE WITHOUT THE WRITTEN PERMISSION OF ACE HEATERS, LLC IS PROHIBITED.

8

7

6

5

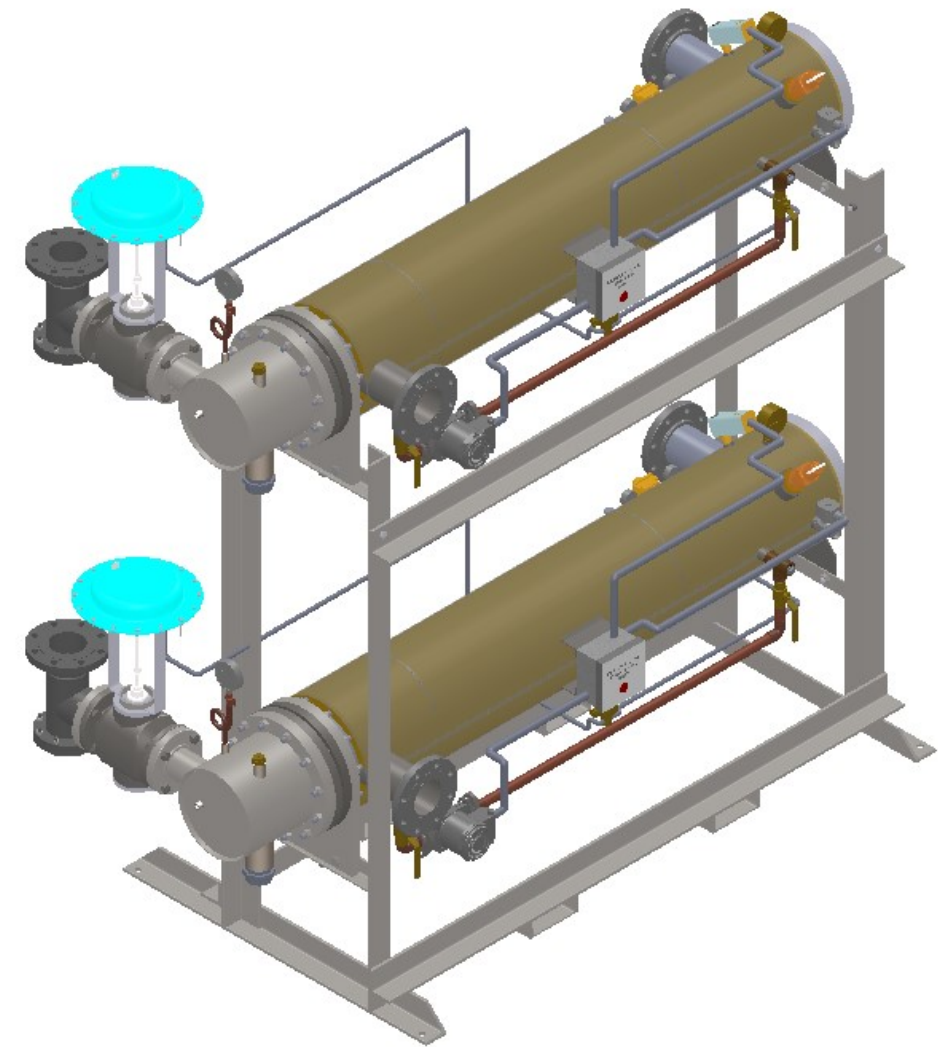
4

3

2

1

SIHDWSA-2-DR, DW - STEAM - PNEUMATIC VALVE PACKAGE - DUAL UNIT ON RACK								
MP SIZE	5	6	8	10	12	14	16	
ITEMS	10	10 1/2	11 1/2	13 1/2	14 1/2	15 1/2	16 1/2	
DIMENSION	1	10	10 1/2	11 1/2	13 1/2	14 1/2	15 1/2	16 1/2
	2	7 11/16	8 3/16	10 1/8	10 13/16	12 1/2	12 1/4	14
	3	59 15/16	60 7/16	62 3/8	76 1/16	77 3/4	77 1/2	79 1/4
	4	10 5/8	11 1/4	12 1/8	13 3/8	15 5/8	17 11/16	18 9/16
	5	61 1/2	62	61 3/4	64	62 1/2	72	75 3/4
	6	80 3/16	81 5/16	83 9/16	87 1/8	94 7/16	104 1/16	110 15/16
	7	22 15/16	23 7/16	25 3/8	26 3/16	27 7/8	27 5/8	29 3/8
	8	26 1/2	26 1/2	26 1/2	26 1/2	26 1/2	26 1/2	26 1/2
	9	15 1/2	15 1/2	15 1/2	15 1/2	15 1/2	15 1/2	15 1/2
	10	68 1/4	69 3/8	70 3/8	71 7/8	74 5/16	82 15/16	82 15/16
	11	1 3/8	1 1/2	2 1/16	2 1/2	3 1/16	3 1/8	3 1/4
	12	64	64	64	64	64	75	80
	13	2 1/2	2 1/2	2 1/2	2 1/2	2 1/2	2 1/2	2 1/2
INLET PIPE SIZE	2 1/2 FLG.	2 1/2 FLG.	3 FLG.	4 FLG.	4 FLG.	5 FLG.	6 FLG.	
OUTLET PIPE SIZE	2 1/2 FLG.	2 1/2 FLG.	3 FLG.	4 FLG.	4 FLG.	5 FLG.	6 FLG.	
VALVE SIZE	ITEM	VALVE SIZE AND OVERALL LOCATION						
1/2"	A	3/4						
	B	65 1/8	65 5/8	67 9/16	81 1/4	82 15/16	82 11/16	84 7/16
	C	20 5/16	20 9/16	21 9/16	24 1/16	25 9/16	27 9/16	29 9/16
	D	75 3/4	76 1/4	78 3/16	91 7/8	93 9/16	93 5/16	95 1/16
	E	28 1/8	28 5/8	30 9/16	31 3/8	33 1/16	32 13/16	34 9/16
3/4"	A	1						
	B	66 3/16	66 11/16	68 5/8	82 5/16	84	83 3/4	85 1/2
	C	21 5/16	21 9/16	22 9/16	25 1/16	26 9/16	28 9/16	30 9/16
	D	75 3/4	76 1/4	78 3/16	91 7/8	93 9/16	93 5/16	95 1/16
	E	29 3/16	29 11/16	31 5/8	32 7/16	34 1/8	33 7/8	35 5/8
1"	A	1 1/4						
	B	66 5/8	67 1/8	69 1/16	82 3/4	84 7/16	84 3/16	85 15/16
	C	22 1/8	22 3/8	23 3/8	25 7/8	27 3/8	29 3/8	31 3/8
	D	75 3/4	76 1/4	78 3/16	91 7/8	93 9/16	93 5/16	95 1/16
	E	29 5/8	30 1/8	32 1/16	32 7/8	34 9/16	34 5/16	36 1/16
1 1/4"	A	1 1/2						
	B	67 5/8	68 1/8	70 1/16	83 3/4	85 7/16	85 3/16	86 15/16
	C	21 7/16	21 11/16	22 11/16	25 3/16	26 11/16	28 11/16	30 11/16
	D	75 3/4	76 1/4	78 3/16	91 7/8	93 9/16	93 5/16	95 1/16
	E	30 5/8	31 1/8	33 1/16	33 7/8	35 9/16	35 5/16	37 1/16
1 1/2"	A	2						
	B	69 3/16	69 11/16	71 5/8	85 5/16	87	86 3/4	88 1/2
	C	22 1/16	22 5/16	23 5/16	25 13/16	27 5/16	29 5/16	31 5/16
	D	76 1/2	77	78 15/16	92 5/8	94 5/16	94 1/16	95 13/16
	E	32 3/16	32 11/16	34 5/8	35 7/16	37 1/8	36 7/8	38 5/8
2"	A	2 1/2						
	B	71 3/16	71 11/16	73 5/8	87 5/16	89	88 3/4	90 1/2
	C	24 1/4	24 1/2	25 1/2	28	29 1/2	31 1/2	33 1/2
	D	78 3/16	78 11/16	80 5/8	94 5/16	96	95 3/4	97 1/2
	E	34 3/16	34 11/16	36 5/8	37 7/16	39 1/8	38 7/8	40 5/8
2 1/2"	A	3						
	B	66 1/16	66 9/16	68 1/2	82 3/16	83 7/8	83 5/8	85 3/8
	C	20 1/4	20 1/2	21 1/2	24	25 1/2	27 1/2	29 1/2
	D	78 15/16	79 7/16	81 3/8	95 1/16	96 3/4	96 1/2	98 1/4
	E	29 1/16	29 9/16	31 1/2	32 5/16	34	33 3/4	35 1/2
3"	A	4						
	B	N/A	67 5/8	69 9/16	83 1/4	84 15/16	84 11/16	86 7/16
	C	N/A	22 5/16	23 5/16	25 13/16	27 5/16	29 5/16	31 5/16
	D	N/A	81 5/16	83 1/4	96 15/16	98 5/8	98 3/8	100 1/8
	E	N/A	30 5/8	32 9/16	33 3/8	35 1/16	34 13/16	36 9/16
4"	A	6						
	B	N/A	N/A	71 1/2	85 3/16	86 7/8	86 5/8	88 3/8
	C	N/A	N/A	27 3/16	29 11/16	31 3/16	33 3/16	35 3/16
	D	N/A	N/A	85 1/4	98 15/16	100 5/8	100 3/8	102 1/8
	E	N/A	N/A	34 1/2	35 5/16	37	36 3/4	38 1/2
5"	A	6						
	B	N/A	N/A	N/A	85 3/16	86 7/8	86 5/8	88 3/8
	C	N/A	N/A	N/A	33 5/16	34 13/16	36 13/16	38 13/16
	D	N/A	N/A	N/A	98 15/16	100 5/8	100 3/8	102 1/8
	E	N/A	N/A	N/A	35 5/16	37	36 3/4	38 1/2



ISOMETRIC VIEW

NOTES:

1/ DIMENSIONS IN INCHES, AND SUBJECT TO CHANGE WITHOUT NOTICE.

2/ DIM 'B', 'C', 'D', 'E' ARE TO BE APPROXIMATED ONLY, CONSULT FACTORY FOR TIGHT DIMENSIONS.



a nudyne company

Ace Heaters, LLC

www.aceheaters.com



ASME SECTION VIII DIV 1 :
DESIGN PRESSURE : (150) psig
TEST PRESSURE : (195) psig
MAX DESIGN TEMPERATURE : 370 °F

NAME	DATE
K.JIMENEZ	04/12/2023
DRWN	
CHDL	
APPVD	
SEC	
QA	

MATERIAL :	TITLE :	SIHDW - COVER
FINISH :	MINIPACK SYSTEM-HORIZONTAL DW	
WEIGHT :	STEAM- PNEUMATIC OPERATED VALVE PACKAGE-DUAL UNIT ON DUAL RACK	
UNLESS OTHERWISE SPECIFIED DIMENSIONS ARE IN INCHES	DWG NO.	SIHDWSA-2-DR-DIM
TOLERANCE	REV.	02
DECIMALS .XX ± .05	SCALE : N/A	S/O #
ANGULAR .XXX ± .010		SHEET : 2 OF 2
MAX SURF		

THE INFORMATION CONTAINED WITHIN THIS DRAWING IS PROPRIETARY AND THE SOLE PROPERTY OF ACE HEATERS, LLC. ANY REPRODUCTION IN PART OR AS A WHOLE WITHOUT THE WRITTEN PERMISSION OF ACE HEATERS, LLC IS PROHIBITED.