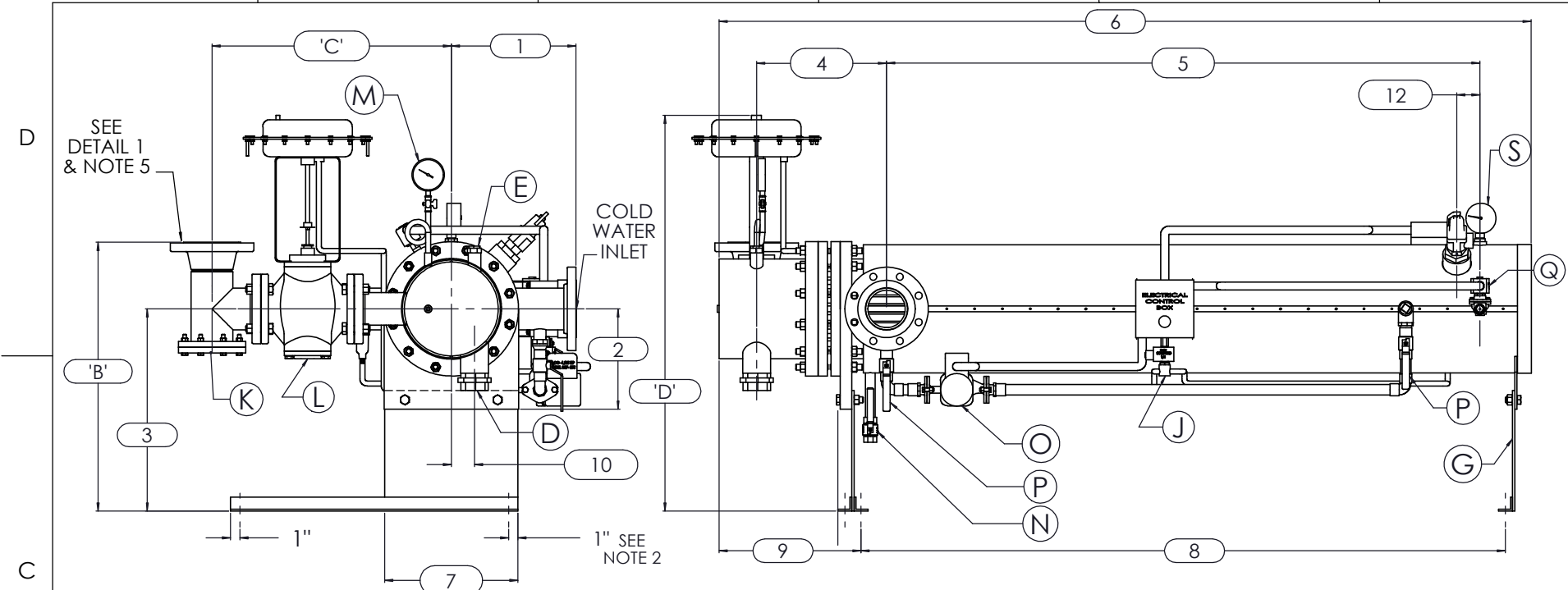
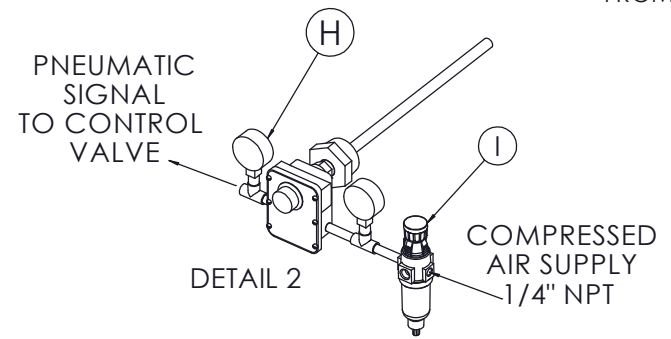


8 7 6 5 4 3 2 1



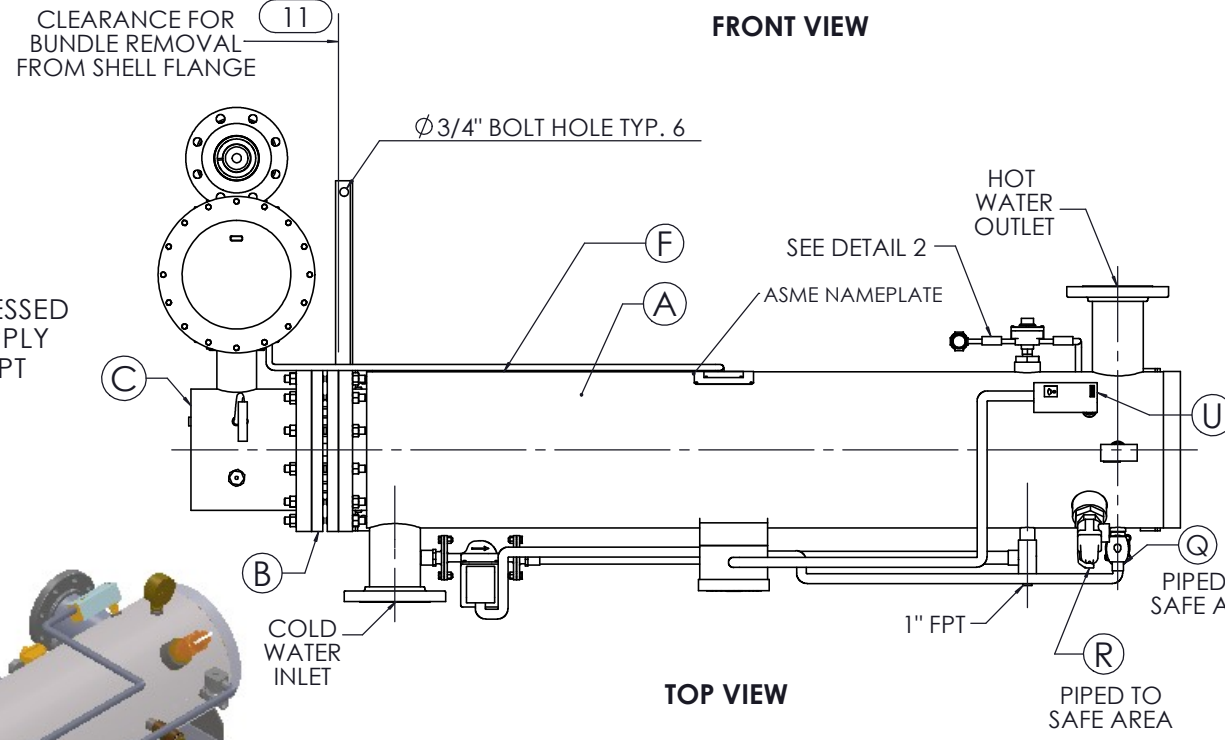
LEFT VIEW

FRONT VIEW



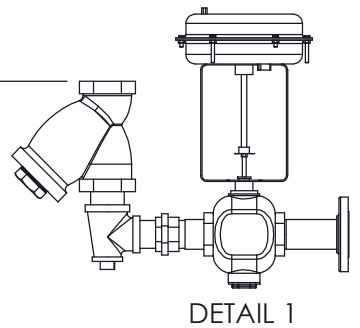
DETAIL 2

COMPRESSED AIR SUPPLY
1/4" NPT

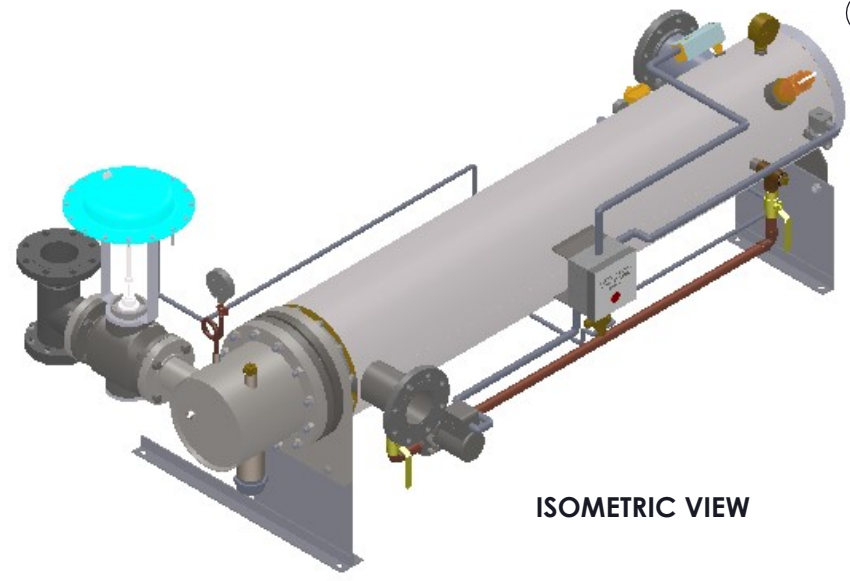


TOP VIEW

↑
'B'
TO GROUND



DETAIL 1



ISOMETRIC VIEW

NOTES:

1. REFER TO PRODUCT SPECIFICATION FOR DESCRIPTION OF LETTERED ITEMS.
2. **CONDENSATE:**
CONDENSATE IS TO BE PIPED FROM HEATER WITHOUT LIFTS TO A VENTED RECEIVER OR DRAIN BELOW THE ELEVATION OF THE HEATER'S CONDENSATE OUTLET.
3. **INSTALLATION:**
ALL COMPONENTS SHOWN HERE ARE PREWIRED & PREPIPED BY ACE HEATERS, LLC. CUSTOMER WILL ONLY NEED TO PLUMB WATER TO BE HEATED, PIPE STEAM AND CONDENSATE LINES, AND BRING ELECTRICITY TO UNIT.
4. DIMENSIONS ARE SUBJECT TO CHANGE. CONSULT FACTORY FOR TIGHT DIMENSIONS.
5. THIS CONFIGURATION CHANGES FOR VALVE SIZE 1/2" TO 2". SEE DETAIL 1 FOR REFERENCE. APPROX. EMPTY WT:



 U	CERTIFIED BY	
	Ace Heaters, LLC www.aceheatingllc.com	
	MAXIMUM ALLOWABLE WORKING PRESSURE	
	SHELL	150 PSI @ 210 °F
	TUBES	150 PSI @ 370 °F
MIN. D.M.T. 0 °F @ 150 PSI		
S/N _____ YEAR BUILT _____		
MODEL _____		
CAPACITY _____ GAL SA. SQFT		
JOB NO. _____ XXX		



ASME SECTION VIII DIV 1: DESIGN PRESSURE : (150) psig TEST PRESSURE : (195) psig MAX DESIGN TEMPERATURE : 370 °F	
NAME	DATE
DRAWN K. JIMENEZ	04/12/2023
CHLD	
APPVD	
SEC	
QA	

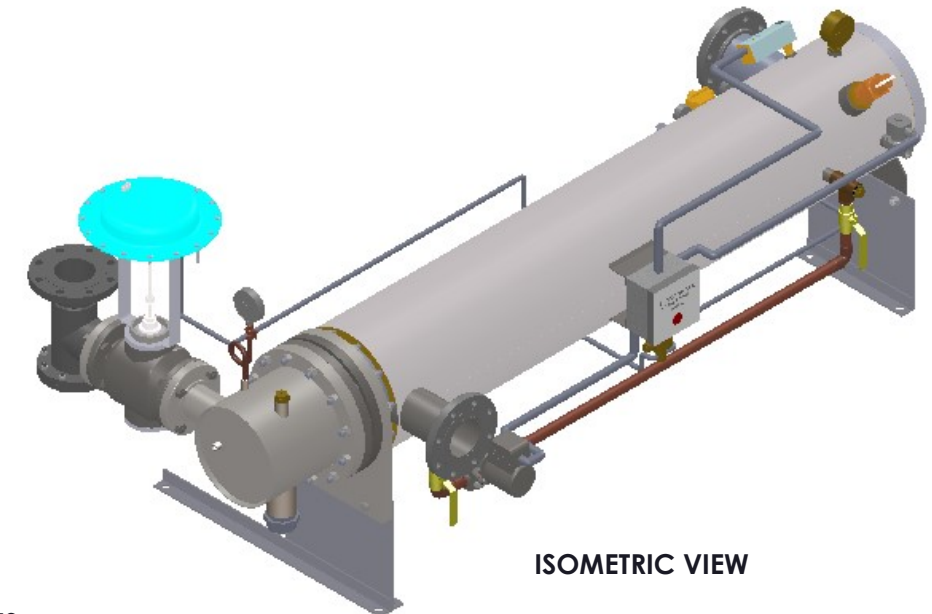
Ace Heaters, LLC www.aceheaters.com	
MATERIAL :	TITLE : SIHDW - COVER
FINISH :	MINIPACK SYSTEM-HORIZONTAL DW
WEIGHT :	STEAM- PNEUMATIC OPERATED
VALVE PACKAGE	
DWG NO. SIHDWSA	REV. 02
SCALE : N/A	S/O #
SHEET : 1 OF 2	

THE INFORMATION CONTAINED WITHIN THIS DRAWING IS PROPRIETARY AND THE SOLE PROPERTY OF ACE HEATERS, LLC. ANY REPRODUCTION IN PART OR AS A WHOLE WITHOUT THE WRITTEN PERMISSION OF ACE HEATERS, LLC IS PROHIBITED.

8 7 6 5 4 3 2 1

SIHDWSA, DW - STEAM - PNEUMATIC VALVE PACKAGE								
MP SIZE	5	6	8	10	12	14	16	
ITEMS	1	10	10 1/2	11 1/2	13 1/2	14 1/2	15 1/2	16 1/2
DIMENSION	2	7 11/16	8 3/16	10 1/8	10 13/16	12 1/2	12 1/4	14
	3	14 7/8	15 3/8	18 5/16	22	26 7/8	26 5/8	28 3/8
	4	10 5/8	11 1/4	12 1/8	13 3/8	15 5/8	17 11/16	18 9/16
	5	61 1/2	62	61 3/4	64	62 1/2	72	75 3/4
	6	80 3/16	81 5/16	83 9/16	87 1/8	94 7/16	104 1/16	110 15/16
	7	8 3/4	9 7/8	11 7/8	14 1/2	16 5/8	18 1/2	20
	8	65 7/8	66 7/8	68	69 1/2	70 11/16	80 5/16	83 7/16
	9	11 3/4	11 3/4	12 5/8	14 7/8	20 3/16	21 3/16	23 15/16
	10	1 3/8	1 1/2	2 1/16	2 1/2	3 1/16	3 1/8	3 1/4
	11	64	64	64	64	64	75	80
	12	2 1/2	2 1/2	2 1/2	2 1/2	2 1/2	2 1/2	2 1/2
	INLET PIPE SIZE	2 1/2 FLG.	2 1/2 FLG.	3 FLG.	4 FLG.	4 FLG.	5 FLG.	6 FLG.
OUTLET PIPE SIZE	2 1/2 FLG.	2 1/2 FLG.	3 FLG.	4 FLG.	4 FLG.	5 FLG.	6 FLG.	

VALVE SIZE AND OVERALL LOCATION								
VALVE SIZE	ITEM							
1/2"	A	3/4						
	B	20 1/16	20 9/16	23 1/2	27 3/16	32 1/16	31 13/16	33 9/16
	C	20 5/16	20 9/16	21 9/16	24 1/16	25 9/16	27 9/16	29 9/16
	D	30 11/16	31 3/16	34 1/8	37 13/16	42 11/16	42 7/16	44 3/16
3/4"	A	1						
	B	21 1/8	21 5/8	24 9/16	28 1/4	33 1/8	32 7/8	34 5/8
	C	21 5/16	21 9/16	22 9/16	25 1/16	26 9/16	28 9/16	30 9/16
	D	30 11/16	31 3/16	34 1/8	37 13/16	42 11/16	42 7/16	44 3/16
1"	A	1 1/4						
	B	21 9/16	22 1/16	25	28 11/16	33 9/16	33 5/16	35 1/16
	C	22 1/8	22 3/8	23 3/8	25 7/8	27 3/8	29 3/8	31 3/8
	D	30 11/16	31 3/16	34 1/8	37 13/16	42 11/16	42 7/16	44 3/16
1 1/4"	A	1 1/2						
	B	22 9/16	23 1/16	26	29 11/16	34 9/16	34 5/16	36 1/16
	C	21 7/16	21 11/16	22 11/16	25 3/16	26 11/16	28 11/16	30 11/16
	D	30 11/16	31 3/16	34 1/8	37 13/16	42 11/16	42 7/16	44 3/16
1 1/2"	A	2						
	B	24 1/8	24 5/8	27 9/16	31 1/4	36 1/8	35 7/8	37 5/8
	C	22 1/16	22 5/16	23 5/16	25 13/16	27 5/16	29 5/16	31 5/16
	D	31 7/16	31 15/16	34 7/8	38 9/16	43 7/16	43 3/16	44 15/16
2"	A	2 1/2						
	B	26 1/8	26 5/8	29 9/16	33 1/4	38 1/8	37 7/8	39 5/8
	C	24 1/4	24 1/2	25 1/2	28	29 1/2	31 1/2	33 1/2
	D	33 1/8	33 5/8	36 9/16	40 1/4	45 1/8	44 7/8	46 5/8
2 1/2"	A	3						
	B	21	21 1/2	24 7/16	28 1/8	33	32 3/4	34 1/2
	C	20 1/4	20 1/2	21 1/2	24	25 1/2	27 1/2	29 1/2
	D	33 7/8	34 3/8	37 5/16	41	45 7/8	45 5/8	47 3/8
3"	A	4						
	B	N/A	22 9/16	25 1/2	29 3/16	34 1/16	33 13/16	35 9/16
	C	N/A	22 5/16	23 5/16	25 13/16	27 5/16	29 5/16	31 5/16
	D	N/A	36 1/4	39 3/16	42 7/8	47 3/4	47 1/2	49 1/4
4"	A	6						
	B	N/A	N/A	27 7/16	31 1/8	36	35 3/4	37 1/2
	C	N/A	N/A	27 3/16	29 11/16	31 3/16	33 3/16	35 3/16
	D	N/A	N/A	41 3/16	44 7/8	49 3/4	49 1/2	51 1/4
5"	A	6						
	B	N/A	N/A	N/A	31 1/8	36	35 3/4	37 1/2
	C	N/A	N/A	N/A	33 5/16	34 13/16	36 13/16	38 13/16
	D	N/A	N/A	N/A	44 7/8	49 3/4	49 1/2	51 1/4



ISOMETRIC VIEW

NOTES:

- 1/ DIMENSIONS IN INCHES, AND SUBJECT TO CHANGE WITHOUT NOTICE.
- 2/ DIM 'B', 'C', 'D' ARE TO BE APPROXIMATED ONLY, CONSULT FACTORY FOR TIGHT DIMENSIONS.



a nudyne company



ASME SECTION VIII DIV 1 : DESIGN PRESSURE : (150) psig TEST PRESSURE : (195) psig MAX DESIGN TEMPERATURE : 370 °F	
NAME	DATE
K.JIMENEZ	04/12/2023
DRWN	
CHLD	
APPVD	
SEC	
QA	

MATERIAL :		TITLE : SIHDW - COVER	
FINISH :		MINIPACK SYSTEM-HORIZONTAL DW	
WEIGHT :		STEAM- PNEUMATIC OPERATED	
UNLESS OTHERWISE SPECIFIED DIMENSIONS ARE IN INCHES		VALVE PACKAGE	
TOLERANCE		DWG NO.	REV.
DECIMALS .XX ± .05	ANGULAR ± .5	SIHDWSA-DIM	02
XXX ± .010	MAX SURF	SCALE : N/A	S/O #
		SHEET : 2 OF 2	

THE INFORMATION CONTAINED WITHIN THIS DRAWING IS PROPRIETARY AND THE SOLE PROPERTY OF ACE HEATERS, LLC. ANY REPRODUCTION IN PART OR AS A WHOLE WITHOUT THE WRITTEN PERMISSION OF ACE HEATERS, LLC IS PROHIBITED.