

8

7

6

5

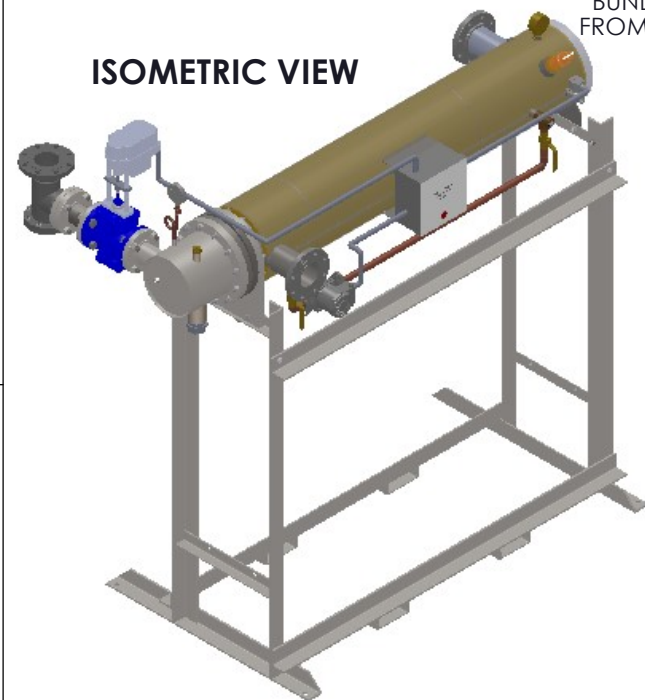
4

3

2

1

ISOMETRIC VIEW



CLEARANCE FOR BUNDLE REMOVAL FROM SHELL FLANGE

12

Ø 3/4" BOLT HOLE TYP. 4

HOT WATER OUTLET

ASME NAMEPLATE

42"

1" FPT. PIPE TO SAFE AREA

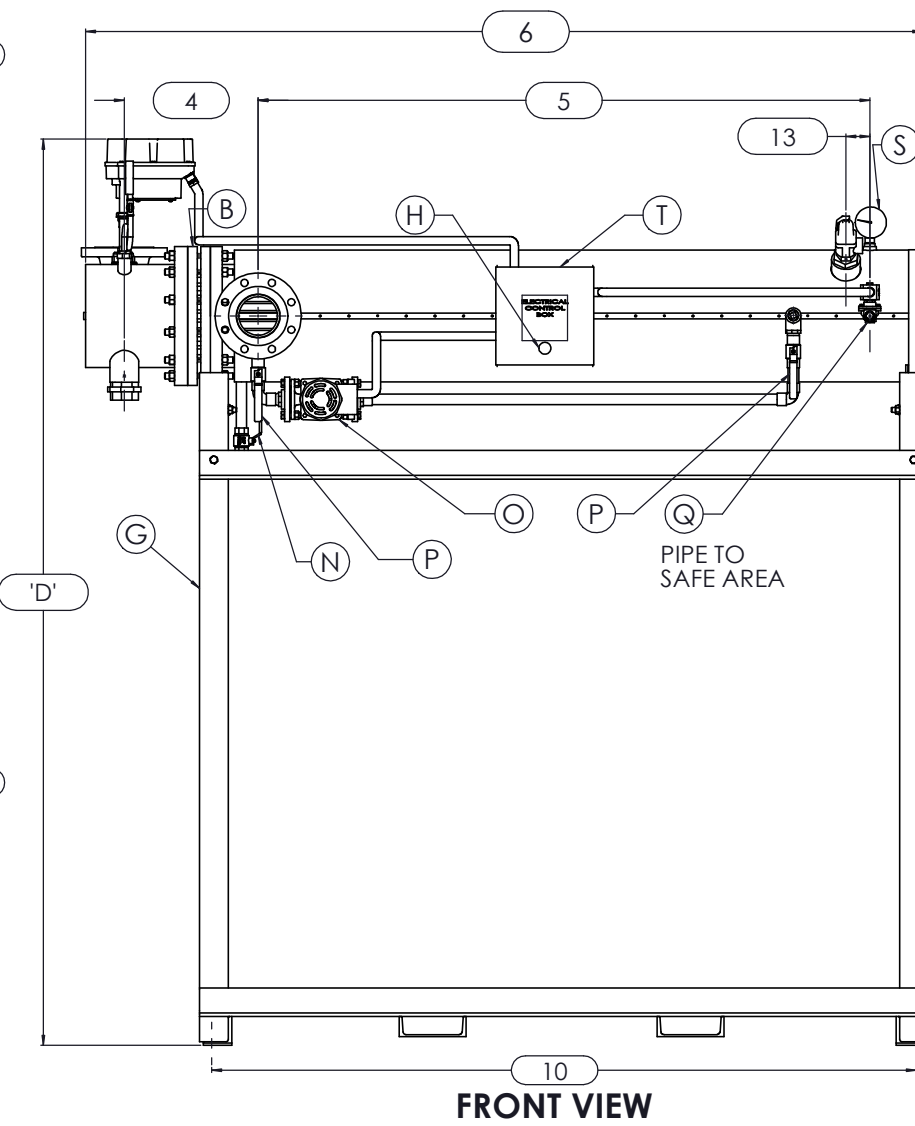
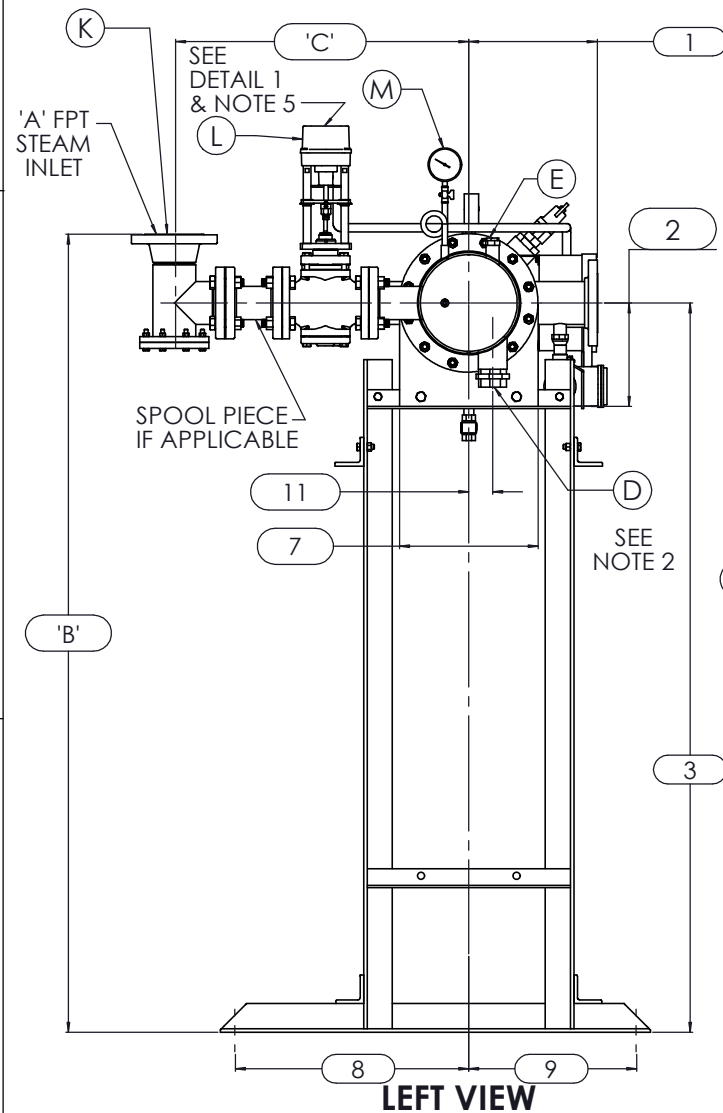
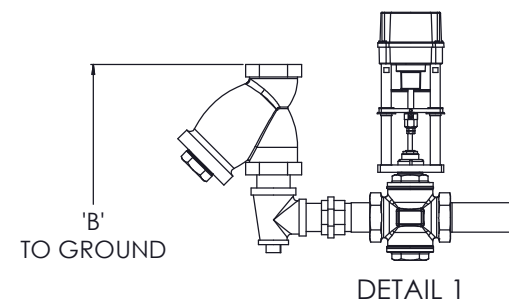
TOP VIEW

1 1/2" TYP.

7/8" TYP.

NOTES:

1. REFER TO PRODUCT SPECIFICATION FOR DESCRIPTION OF LETTERED ITEMS.
2. **CONDENSATE:** CONDENSATE IS TO BE PIPED FROM HEATER WITHOUT LIFTS TO A VENTED RECEIVER OR DRAIN BELOW THE ELEVATION OF THE HEATER'S CONDENSATE OUTLET.
3. **INSTALLATION:** ALL COMPONENTS SHOWN HERE ARE PREWIRED & PREPIPED BY ACE HEATERS, LLC. CUSTOMER WILL ONLY NEED TO PLUMB WATER TO BE HEATED, PIPE STEAM AND CONDENSATE LINES, AND BRING ELECTRICITY TO UNIT.
4. DIMENSIONS ARE SUBJECT TO CHANGE. CONSULT FACTORY FOR TIGHT DIMENSIONS.
5. THIS CONFIGURATION CHANGES FOR VALVE SIZE 1/2" TO 2". SEE DETAIL 1 FOR REFERENCE. APPROX. EMPTY WT:



NB ASME U	CERTIFIED BY Ace Heaters, LLC www.aceheatingllc.com
	MAXIMUM ALLOWABLE WORKING PRESSURE SHELL 150 PSI @ 210 °F TUBES 150 PSI @ 370 °F MIN. D.M.T. 0 °F @ 150 PSI S/N _____ YEAR BUILT _____
MODEL _____ CAPACITY _____ GAL SA. SQFT JOB NO. _____ XXX	



ASME SECTION VIII DIV 1 : DESIGN PRESSURE : (150) psig TEST PRESSURE : (195) psig MAX DESIGN TEMPERATURE : 370 °F	
NAME	DATE
DRAWN K. JIMENEZ	04/12/2023
CHDL	
APPVD	
SEC	
QA	

MATERIAL :	TITLE : SIHDW - COVER
FINISH :	MINIPACK SYSTEM-HORIZONTAL DW
WEIGHT :	STEAM- ELECT. OPERATED VALVE
UNLESS OTHERWISE SPECIFIED DIMENSIONS ARE IN INCHES	PACKAGE-SINGLE UNIT ON DUAL RACK
TOLERANCE	DWG NO. SIHDWSE-1-DR
DECIMALS .XX ± .05	ANGULAR ± 5
.XXX ± .010	MAX SURF
SCALE : N/A	S/O #
REV. 02	SHEET : 1 OF 2

THE INFORMATION CONTAINED WITHIN THIS DRAWING IS PROPRIETARY AND THE SOLE PROPERTY OF ACE HEATERS, LLC. ANY REPRODUCTION IN PART OR AS A WHOLE WITHOUT THE WRITTEN PERMISSION OF ACE HEATERS, LLC IS PROHIBITED.

8

7

6

5

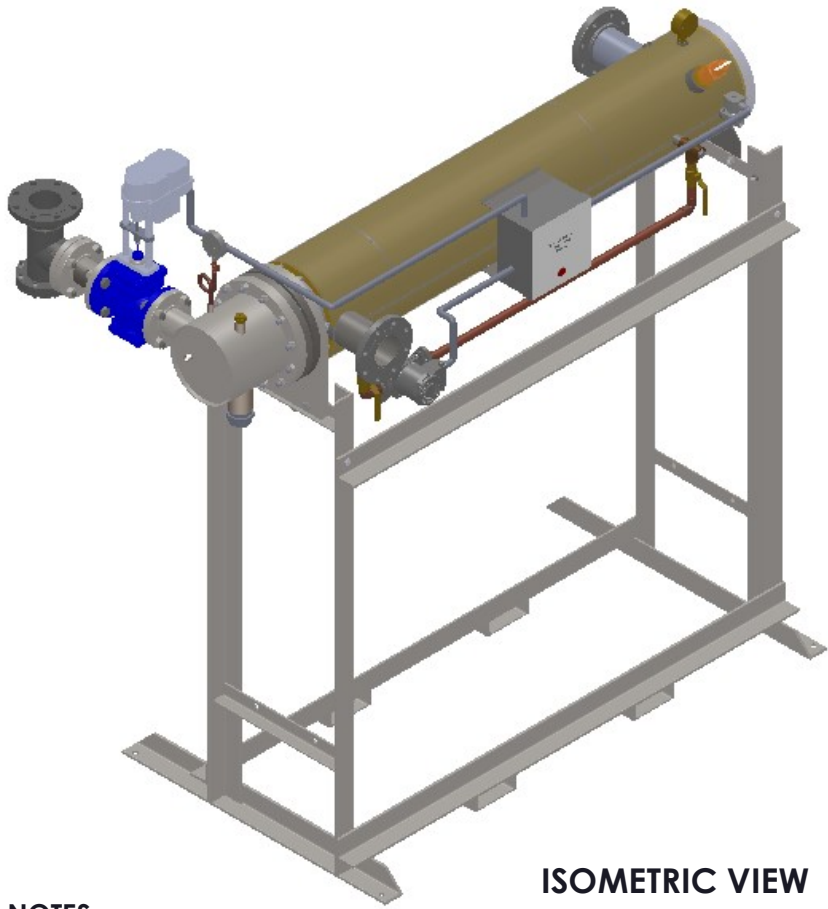
4

3

2

1

SIHDWSE-1-DR, DW - STEAM - ELECTRIC VALVE PACKAGE - SINGLE UNIT ON RACK											
		MP SIZE	5	6	8	10	12	14	16		
D	DIMENSION	ITEMS	1	10 1/2	11 1/2	13 1/2	14 1/2	15 1/2	16 1/2		
		2	7 11/16	8 3/16	10 1/8	10 13/16	12 1/2	12 1/4	14		
		3	59 15/16	60 7/16	62 3/8	76 1/16	77 3/4	77 1/2	79 1/4		
		4	10 5/8	11 1/4	12 1/8	13 3/8	15 5/8	17 11/16	18 9/16		
		5	61 1/2	62	61 3/4	64	62 1/2	72	75 3/4		
		6	80 3/16	81 5/16	83 9/16	87 1/8	94 7/16	104 1/16	110 15/16		
		7	8 3/4	9 7/8	11 7/8	14 1/2	16 5/8	18 1/2	20		
		8	26 1/2	26 1/2	26 1/2	26 1/2	26 1/2	26 1/2	26 1/2		
		9	15 1/2	15 1/2	15 1/2	15 1/2	15 1/2	15 1/2	15 1/2		
		10	68 1/4	69 3/8	70 3/8	71 7/8	74 5/16	82 15/16	82 15/16		
		11	1 3/8	1 1/2	2 1/16	2 1/2	3 1/16	3 1/8	3 1/4		
		12	64	64	64	64	64	75	80		
		13	2 1/2	2 1/2	2 1/2	2 1/2	2 1/2	2 1/2	2 1/2		
		INLET PIPE SIZE		2 1/2 FLG.	2 1/2 FLG.	3 FLG.	4 FLG.	4 FLG.	5 FLG.	6 FLG.	
OUTLET PIPE SIZE		2 1/2 FLG.	2 1/2 FLG.	3 FLG.	4 FLG.	4 FLG.	5 FLG.	6 FLG.			
VALVE SIZE		VALVE SIZE AND OVERALL LOCATION									
C	ITEM	'A'	3/4								
		'B'	65 1/8	65 5/8	67 9/16	81 1/4	82 15/16	82 11/16	84 7/16		
		'C'	18 1/2	18 3/4	19 3/4	22 1/4	23 3/4	25 3/4	27 3/4		
		'D'	75 11/16	76 3/16	78 1/8	91 13/16	93 1/2	93 1/4	95		
		3/4"	'A'	1							
			'B'	66 3/16	66 11/16	68 5/8	82 5/16	84	83 3/4	85 1/2	
			'C'	19 3/16	19 7/16	20 7/16	22 15/16	24 7/16	26 7/16	28 7/16	
			'D'	75 11/16	76 3/16	78 1/8	91 13/16	93 1/2	93 1/4	95	
		1"	'A'	1 1/4							
			'B'	66 5/8	67 1/8	69 1/16	82 3/4	84 7/16	84 3/16	85 15/16	
			'C'	19 15/16	20 3/16	21 3/16	23 11/16	25 3/16	27 3/16	29 3/16	
			'D'	75 11/16	76 3/16	78 1/8	91 13/16	93 1/2	93 1/4	95	
		1 1/4"	'A'	1 1/2							
			'B'	67 5/8	68 1/8	70 1/16	83 3/4	85 7/16	85 3/16	86 15/16	
'C'	21 7/16		21 11/16	22 11/16	25 3/16	26 11/16	28 11/16	30 11/16			
'D'	76 5/16		76 13/16	78 3/4	92 7/16	94 1/8	93 7/8	95 5/8			
1 1/2"	'A'	2									
	'B'	69 3/16	69 11/16	71 5/8	85 5/16	87	86 3/4	88 1/2			
	'C'	22 1/8	22 3/8	23 3/8	25 7/8	27 3/8	29 3/8	31 3/8			
	'D'	76 5/16	76 13/16	78 3/4	92 7/16	94 1/8	93 7/8	95 5/8			
2"	'A'	2 1/2									
	'B'	71 3/16	71 11/16	73 5/8	87 5/16	89	88 3/4	90 1/2			
	'C'	24	24 1/4	25 1/4	27 3/4	29 1/4	31 1/4	33 1/4			
	'D'	76 9/16	77 1/16	79	92 11/16	94 3/8	94 1/8	95 7/8			
2 1/2"	'A'	3									
	'B'	66 1/16	66 9/16	68 1/2	82 3/16	83 7/8	83 5/8	85 3/8			
	'C'	27 7/8	28 1/8	29 1/8	31 5/8	33 1/8	35 1/8	37 1/8			
	'D'	78 15/16	79 7/16	81 3/8	95 1/16	96 3/4	96 1/2	98 1/4			
3"	'A'	4									
	'B'	N/A	67 5/8	69 9/16	83 1/4	84 15/16	84 11/16	86 7/16			
	'C'	N/A	29 7/8	30 7/8	33 3/8	34 7/8	36 7/8	38 7/8			
	'D'	N/A	80 1/16	82	95 11/16	97 3/8	97 1/8	98 7/8			
4"	'A'	6									
	'B'	N/A	N/A	71 1/2	85 3/16	86 7/8	86 5/8	88 3/8			
	'C'	N/A	N/A	35 1/8	37 5/8	39 1/8	41 1/8	43 1/8			
	'D'	N/A	N/A	83 1/8	96 13/16	98 1/2	98 1/4	100			
5"	'A'	6									
	'B'	N/A	N/A	N/A	85 3/16	86 7/8	86 5/8	88 3/8			
	'C'	N/A	N/A	N/A	41 1/8	42 5/8	44 5/8	46 5/8			
	'D'	N/A	N/A	N/A	97 5/16	99	98 3/4	100 1/2			



ISOMETRIC VIEW


- NOTES:**
- 1/ DIMENSIONS IN INCHES, AND SUBJECT TO CHANGE WITHOUT NOTICE.
 - 2/ DIM 'B', 'C', 'D' ARE TO BE APPROXIMATED ONLY, CONSULT FACTORY FOR TIGHT DIMENSIONS.



a nudyne company

Ace Heaters, LLC

www.aceheaters.com

 MADE IN USA	ASME SECTION VIII DIV 1 : DESIGN PRESSURE : (150) psig TEST PRESSURE : (195) psig MAX DESIGN TEMPERATURE : 370 °F		MATERIAL :	TITLE :	
	DRAWN : K.JIMENEZ DATE : 04/12/2023	CHECKED : APP'D : REC : QA :	WEIGHT : UNLESS OTHERWISE SPECIFIED DIMENSIONS ARE IN INCHES TOLERANCE DECIMALS .XX ± .05 ANGULAR .XXX ± .010 MAX SURF	FINISH : DWG NO. : SIHDWSE-1-DR-DIM REV. : 02	SIHDW - COVER MINIPACK SYSTEM-HORIZONTAL DW STEAM- ELECT. OPERATED VALVE PACKAGE-SINGLE UNIT ON DUAL RACK
	SCALE : N/A		S/O # :	SHEET : 2 OF 2	

THE INFORMATION CONTAINED WITHIN THIS DRAWING IS PROPRIETARY AND THE SOLE PROPERTY OF ACE HEATERS, LLC. ANY REPRODUCTION IN PART OR AS A WHOLE WITHOUT THE WRITTEN PERMISSION OF ACE HEATERS, LLC IS PROHIBITED.