

8

7

6

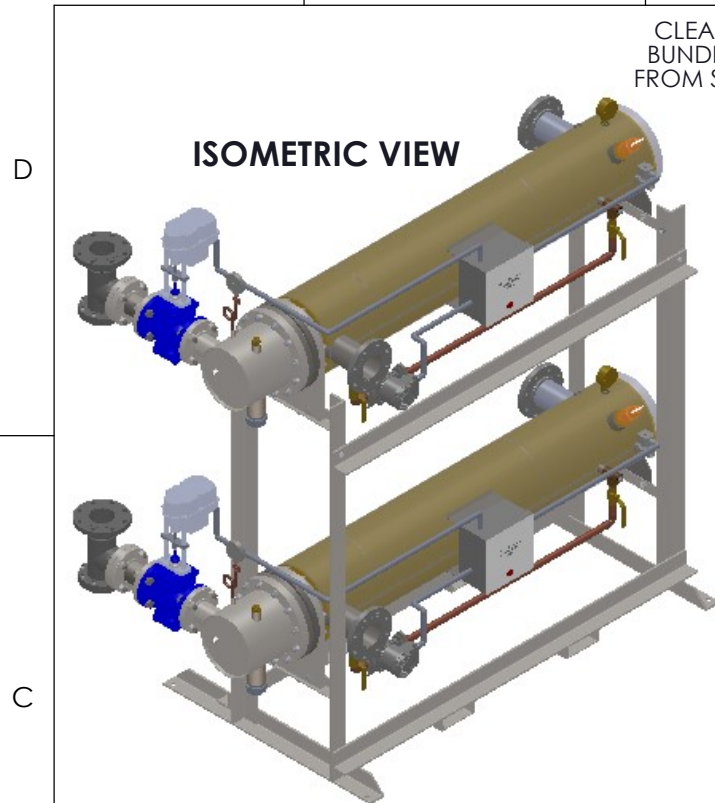
5

4

3

2

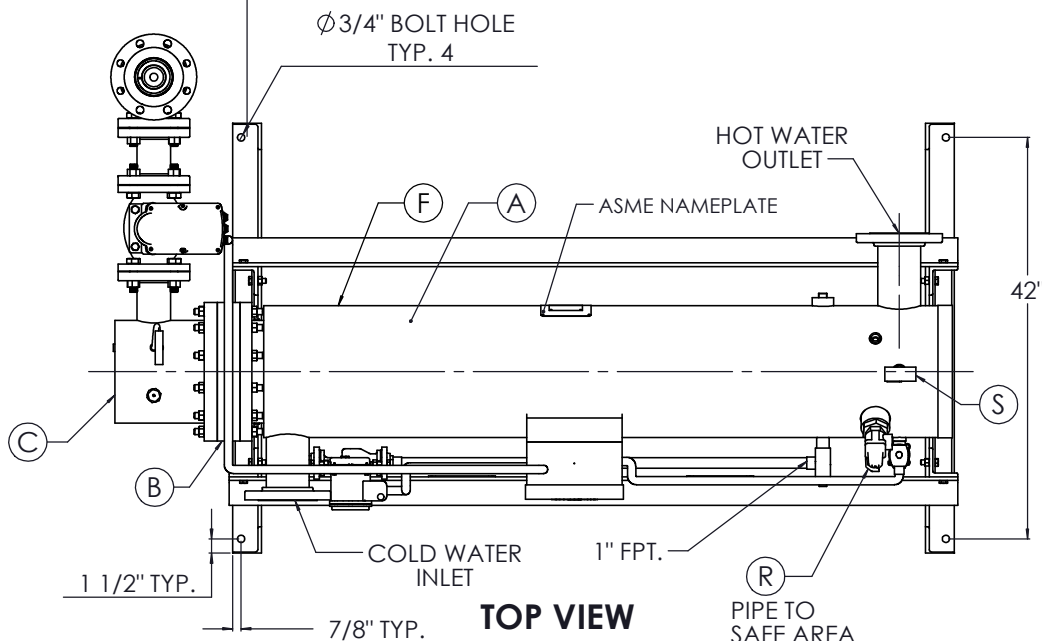
1



ISOMETRIC VIEW

CLEARANCE FOR BUNDLE REMOVAL FROM SHELL FLANGE

12



TOP VIEW

7/8" TYP.

HOT WATER OUTLET

COLD WATER INLET

1" FPT.

PIPE TO SAFE AREA

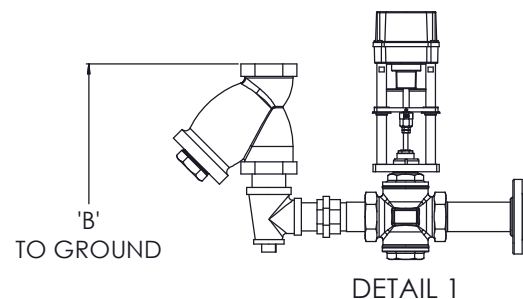
1 1/2" TYP.

Ø3/4" BOLT HOLE TYP. 4

NOTES:

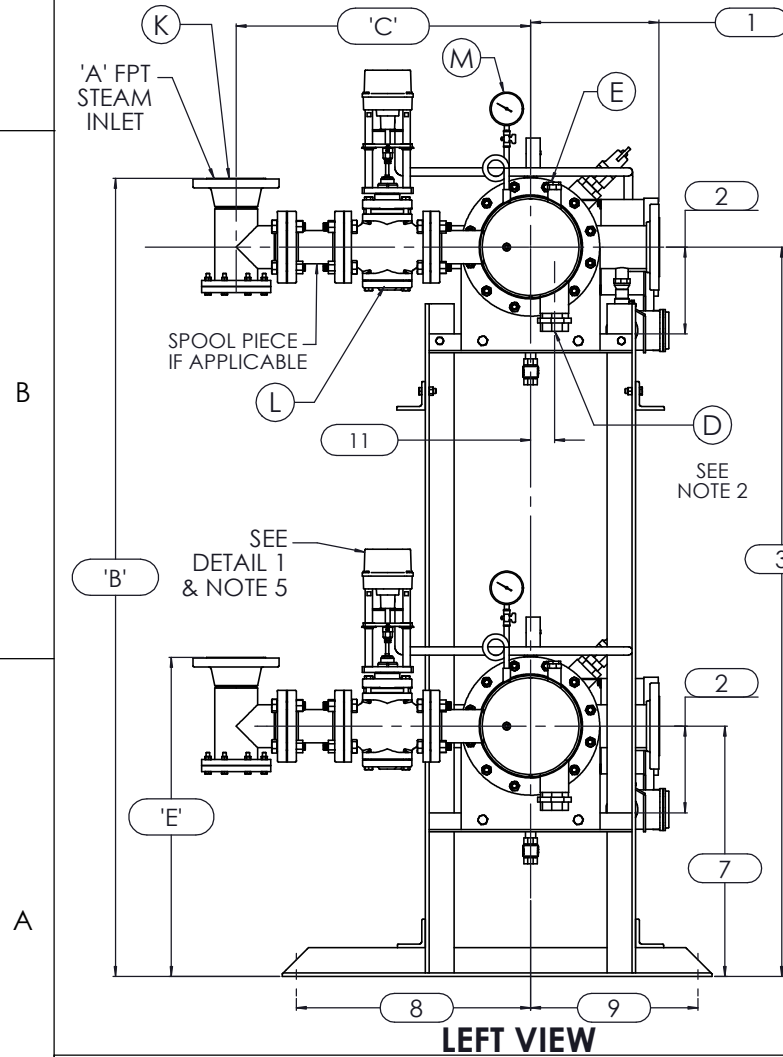
1. REFER TO PRODUCT SPECIFICATION FOR DESCRIPTION OF LETTERED ITEMS.
2. CONDENSATE: CONDENSATE IS TO BE PIPED FROM HEATER WITHOUT LIFTS TO A VENTED RECEIVER OR DRAIN BELOW THE ELEVATION OF THE HEATER'S CONDENSATE OUTLET.
3. INSTALLATION: ALL COMPONENTS SHOWN HERE ARE PREWIRED & PREPIPED BY ACE HEATERS, LLC. CUSTOMER WILL ONLY NEED TO PLUMB WATER TO BE HEATED, PIPE STEAM AND CONDENSATE LINES, AND BRING ELECTRICITY TO UNIT.
4. DIMENSIONS ARE SUBJECT TO CHANGE. CONSULT FACTORY FOR TIGHT DIMENSIONS.
5. THIS CONFIGURATION CHANGES FOR VALVE SIZE 1/2" TO 2". SEE DETAIL 1 FOR REFERENCE.

APPROX. EMPTY WT:



DETAIL 1

'B' TO GROUND



LEFT VIEW

'A' FPT STEAM INLET

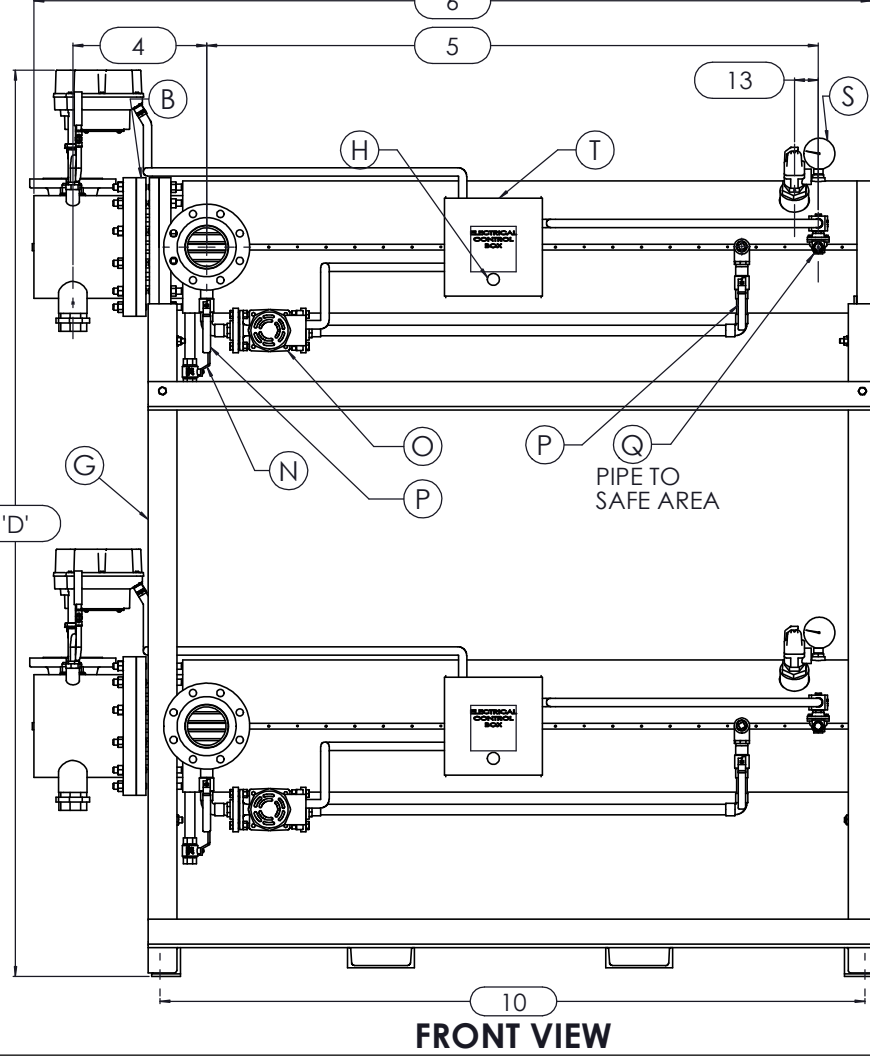
SPOOL PIECE IF APPLICABLE

'B'

SEE DETAIL 1 & NOTE 5

'E'

A



FRONT VIEW

10

PIPE TO SAFE AREA

'D'

3

7

2

11

2

1

11

1

1

1

1

1

1

1

1

1

1

1

1

1

1

1



	CERTIFIED BY Ace Heaters, LLC www.aceheatingllc.com
	MAXIMUM ALLOWABLE WORKING PRESSURE SHELL 150 PSI @ 210 °F TUBES 150 PSI @ 370 °F MIN. D.M.T. 0 °F @ 150 PSI S/N _____ YEAR BUILT _____
	MODEL _____ CAPACITY _____ GAL SA. SQFT JOB NO. _____ XXX



ASME SECTION VIII DIV 1 : DESIGN PRESSURE : (150) psig TEST PRESSURE : (195) psig MAX DESIGN TEMPERATURE : 370 °F	
NAME	DATE
DRAWN K.JIMENEZ	04/12/2023
CHKD	
APPVD	
SEC	
QA	

MATERIAL :	TITLE : SIHDW - COVER
FINISH :	MINIPACK SYSTEM-HORIZONTAL DW
WEIGHT :	STEAM- ELECT. OPERATED VALVE
	PACKAGE-DUAL UNIT ON DUAL RACK
UNLESS OTHERWISE SPECIFIED DIMENSIONS ARE IN INCHES	DWG NO. SIHDWSE-2-DR
TOLERANCE	REV. 02
DECIMALS .XX ± .05	
ANGULAR .XXX ± .010	
MAX SURF	SCALE : N/A
	S/O#
	SHEET : 1 OF 2

THE INFORMATION CONTAINED WITHIN THIS DRAWING IS PROPRIETARY AND THE SOLE PROPERTY OF ACE HEATERS, LLC. ANY REPRODUCTION IN PART OR AS A WHOLE WITHOUT THE WRITTEN PERMISSION OF ACE HEATERS, LLC IS PROHIBITED.

8

7

6

5

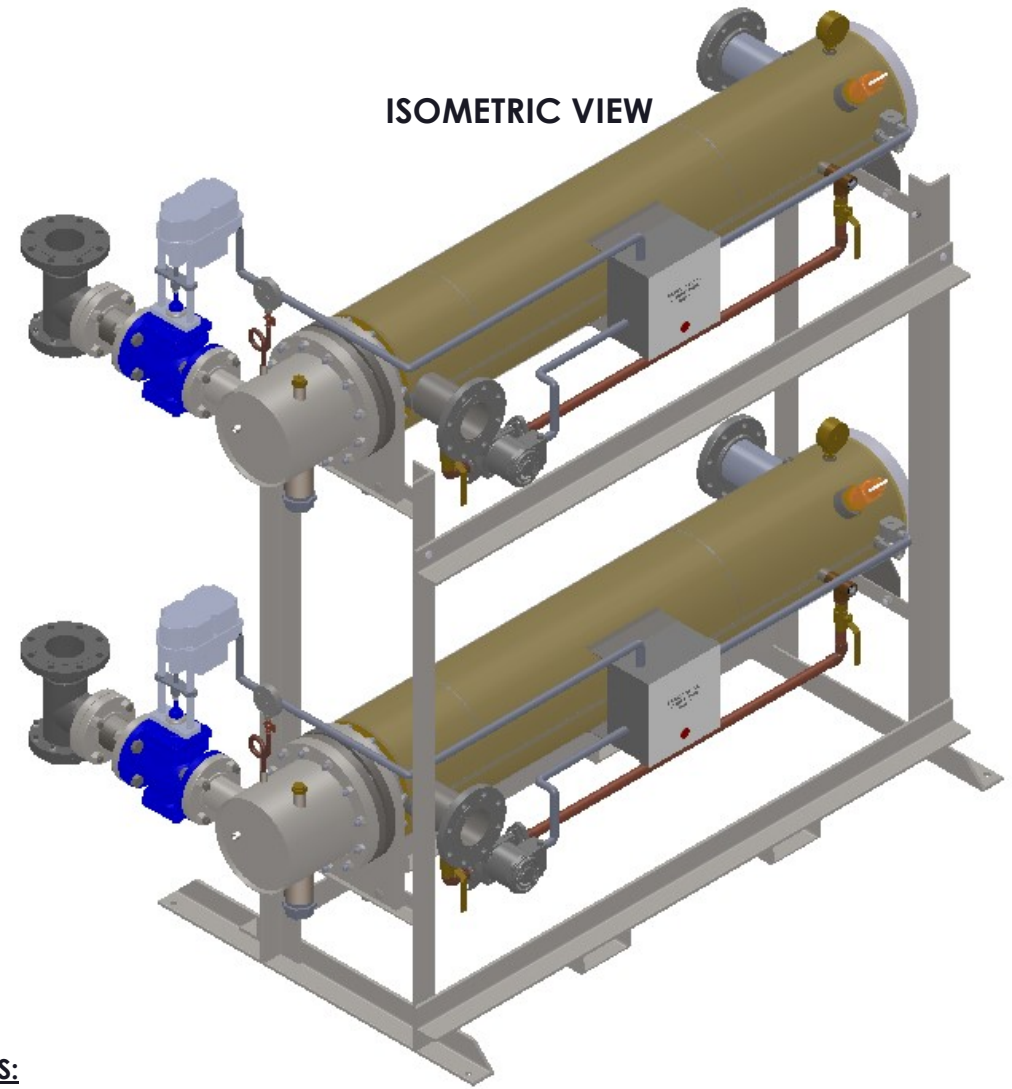
4

3

2

1

SIHDWSE-2-DR, DW - STEAM - ELECTRIC VALVE PACKAGE - DUAL UNIT ON RACK								
	MP SIZE	5	6	8	10	12	14	16
DIMENSION	ITEMS	10	10 1/2	11 1/2	13 1/2	14 1/2	15 1/2	16 1/2
	2	7 11/16	8 3/16	10 1/8	10 13/16	12 1/2	12 1/4	14
	3	59 15/16	60 7/16	62 3/8	76 1/16	77 3/4	77 1/2	79 1/4
	4	10 5/8	11 1/4	12 1/8	13 3/8	15 5/8	17 11/16	18 9/16
	5	61 1/2	62	61 3/4	64	62 1/2	72	75 3/4
	6	80 3/16	81 5/16	83 9/16	87 1/8	94 7/16	104 1/16	110 15/16
	7	22 15/16	23 7/16	25 3/8	26 3/16	27 7/8	27 5/8	29 3/8
	8	26 1/2	26 1/2	26 1/2	26 1/2	26 1/2	26 1/2	26 1/2
	9	15 1/2	15 1/2	15 1/2	15 1/2	15 1/2	15 1/2	15 1/2
	10	68 1/4	69 3/8	70 3/8	71 7/8	74 5/16	82 15/16	82 15/16
	11	1 3/8	1 1/2	2 1/16	2 1/2	3 1/16	3 1/8	3 1/4
	12	64	64	64	64	64	75	80
	13	2 1/2	2 1/2	2 1/2	2 1/2	2 1/2	2 1/2	2 1/2
INLET PIPE SIZE		2 1/2 FLG.	2 1/2 FLG.	3 FLG.	4 FLG.	4 FLG.	5 FLG.	6 FLG.
OUTLET PIPE SIZE		2 1/2 FLG.	2 1/2 FLG.	3 FLG.	4 FLG.	4 FLG.	5 FLG.	6 FLG.
VALVE SIZE AND OVERALL LOCATION								
VALVE SIZE	ITEM							
1/2"	'A'	3/4						
	'B'	65 1/8	65 5/8	67 9/16	81 1/4	82 15/16	82 11/16	84 7/16
	'C'	18 1/2	18 3/4	19 3/4	22 1/4	23 3/4	25 3/4	27 3/4
	'D'	75 11/16	76 3/16	78 1/8	91 13/16	93 1/2	93 1/4	95
	'E'	28 1/8	28 5/8	30 9/16	31 3/8	33 1/16	32 13/16	34 9/16
3/4"	'A'	1						
	'B'	66 3/16	66 11/16	68 5/8	82 5/16	84	83 3/4	85 1/2
	'C'	19 3/16	19 7/16	20 7/16	22 15/16	24 7/16	26 7/16	28 7/16
	'D'	75 11/16	76 3/16	78 1/8	91 13/16	93 1/2	93 1/4	95
	'E'	29 3/16	29 11/16	31 5/8	32 7/16	34 1/8	33 7/8	35 5/8
1"	'A'	1 1/4						
	'B'	66 5/8	67 1/8	69 1/16	82 3/4	84 7/16	84 3/16	85 15/16
	'C'	19 15/16	20 3/16	21 3/16	23 11/16	25 3/16	27 3/16	29 3/16
	'D'	75 11/16	76 3/16	78 1/8	91 13/16	93 1/2	93 1/4	95
	'E'	29 5/8	30 1/8	32 1/16	32 7/8	34 9/16	34 5/16	36 1/16
1 1/4"	'A'	1 1/2						
	'B'	67 5/8	68 1/8	70 1/16	83 3/4	85 7/16	85 3/16	86 15/16
	'C'	21 7/16	21 11/16	22 11/16	25 3/16	26 11/16	28 11/16	30 11/16
	'D'	76 5/16	76 13/16	78 3/4	92 7/16	94 1/8	93 7/8	95 5/8
	'E'	30 5/8	31 1/8	33 1/16	33 7/8	35 9/16	35 5/16	37 1/16
1 1/2"	'A'	2						
	'B'	69 3/16	69 11/16	71 5/8	85 5/16	87	86 3/4	88 1/2
	'C'	22 1/8	22 3/8	23 3/8	25 7/8	27 3/8	29 3/8	31 3/8
	'D'	76 5/16	76 13/16	78 3/4	92 7/16	94 1/8	93 7/8	95 5/8
	'E'	32 3/16	32 11/16	34 5/8	35 7/16	37 1/8	36 7/8	38 5/8
2"	'A'	2 1/2						
	'B'	71 3/16	71 11/16	73 5/8	87 5/16	89	88 3/4	90 1/2
	'C'	24	24 1/4	25 1/4	27 3/4	29 1/4	31 1/4	33 1/4
	'D'	76 9/16	77 1/16	79	92 11/16	94 3/8	94 1/8	95 7/8
	'E'	34 3/16	34 11/16	36 5/8	37 7/16	39 1/8	38 7/8	40 5/8
2 1/2"	'A'	3						
	'B'	66 1/16	66 9/16	68 1/2	82 3/16	83 7/8	83 5/8	85 3/8
	'C'	27 7/8	28 1/8	29 1/8	31 5/8	33 1/8	35 1/8	37 1/8
	'D'	78 15/16	79 7/16	81 3/8	95 1/16	96 3/4	96 1/2	98 1/4
	'E'	29 1/16	29 9/16	31 1/2	32 5/16	34	33 3/4	35 1/2
3"	'A'	4						
	'B'	N/A	67 5/8	69 9/16	83 1/4	84 15/16	84 11/16	86 7/16
	'C'	N/A	29 7/8	30 7/8	33 3/8	34 7/8	36 7/8	38 7/8
	'D'	N/A	80 1/16	82	95 11/16	97 3/8	97 1/8	98 7/8
	'E'	N/A	30 5/8	32 9/16	33 3/8	35 1/16	34 13/16	36 9/16
4"	'A'	6						
	'B'	N/A	N/A	71 1/2	85 3/16	86 7/8	86 5/8	88 3/8
	'C'	N/A	N/A	35 1/8	37 5/8	39 1/8	41 1/8	43 1/8
	'D'	N/A	N/A	83 1/8	96 13/16	98 1/2	98 1/4	100
	'E'	N/A	N/A	34 1/2	35 5/16	37	36 3/4	38 1/2
5"	'A'	6						
	'B'	N/A	N/A	N/A	85 3/16	86 7/8	86 5/8	88 3/8
	'C'	N/A	N/A	N/A	41 1/8	42 5/8	44 5/8	46 5/8
	'D'	N/A	N/A	N/A	97 5/16	99	98 3/4	100 1/2
	'E'	N/A	N/A	N/A	35 5/16	37	36 3/4	38 1/2



NOTES:
 1/ DIMENSIONS IN INCHES, AND SUBJECT TO CHANGE WITHOUT NOTICE.
 2/ DIM 'B', 'C', 'D', 'E' ARE TO BE APPROXIMATED ONLY, CONSULT FACTORY FOR TIGHT DIMENSIONS.



ASME SECTION VIII DIV 1 : DESIGN PRESSURE : (150) psig TEST PRESSURE : (195) psig MAX DESIGN TEMPERATURE : 370 °F		MATERIAL : FINISH : WEIGHT :		TITLE : SIHDW - COVER MINIPACK SYSTEM-HORIZONTAL DW STEAM- ELECT. OPERATED VALVE PACKAGE-DUAL UNIT ON DUAL RACK	
DRAWN : K.JIMENEZ DATE : 04/12/2023 CMBD : APPVD : MFC : QA :	UNLESS OTHERWISE SPECIFIED DIMENSIONS ARE IN INCHES TOLERANCE DECIMALS ANGULAR .XX ± .05 ± .5 .XXX ± .010 MAX SURF		DWG NO. : SIHDWSE-2-DR-DIM REV. : 02		SCALE : N/A S/O # : SHEET : 2 OF 2

THE INFORMATION CONTAINED WITHIN THIS DRAWING IS PROPRIETARY AND THE SOLE PROPERTY OF ACE HEATERS, LLC. ANY REPRODUCTION IN PART OR AS A WHOLE WITHOUT THE WRITTEN PERMISSION OF ACE HEATERS, LLC IS PROHIBITED.