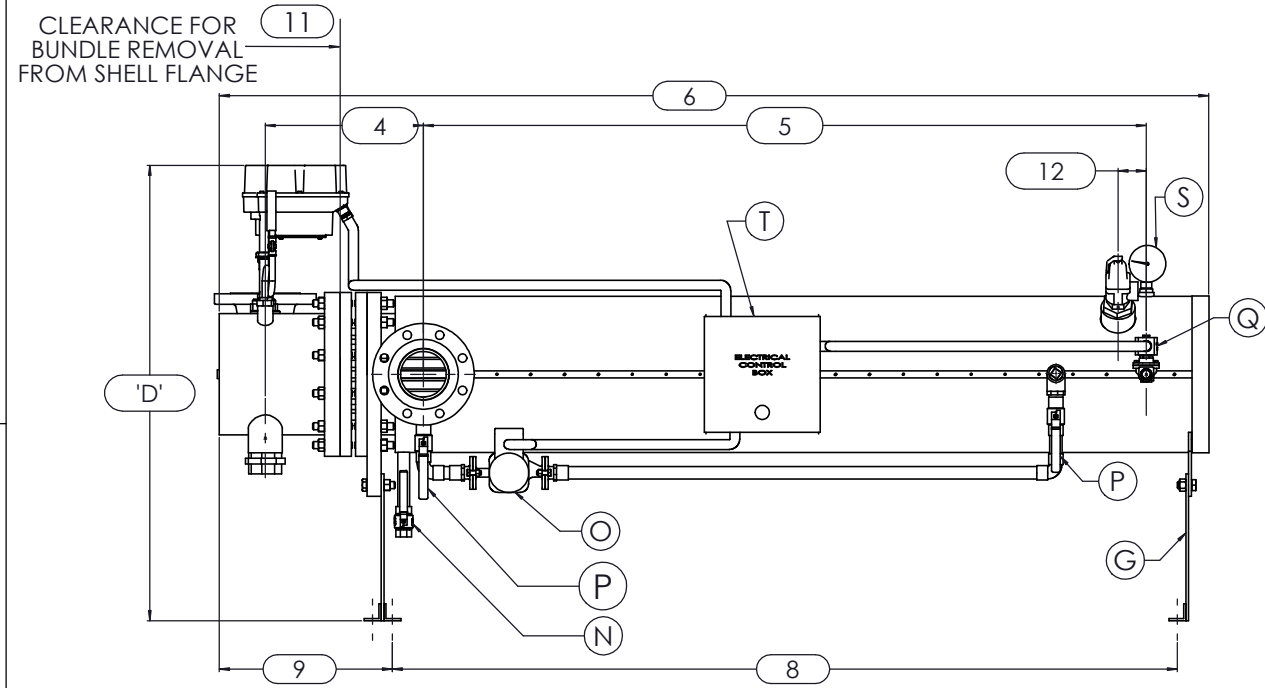
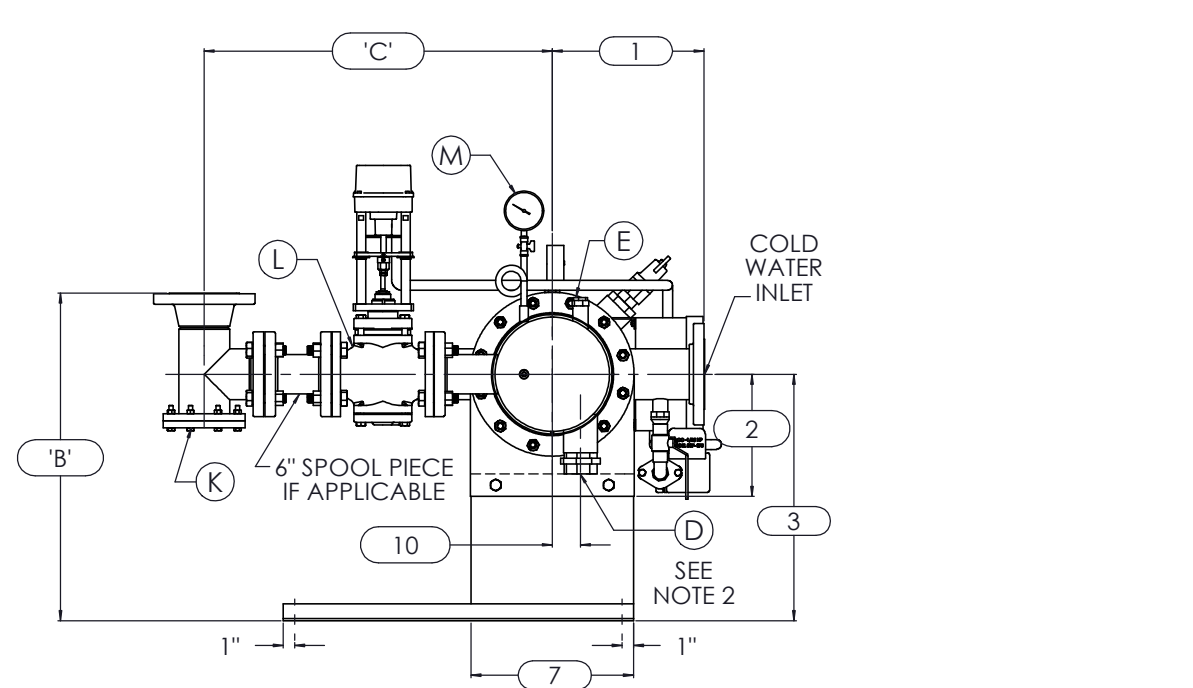


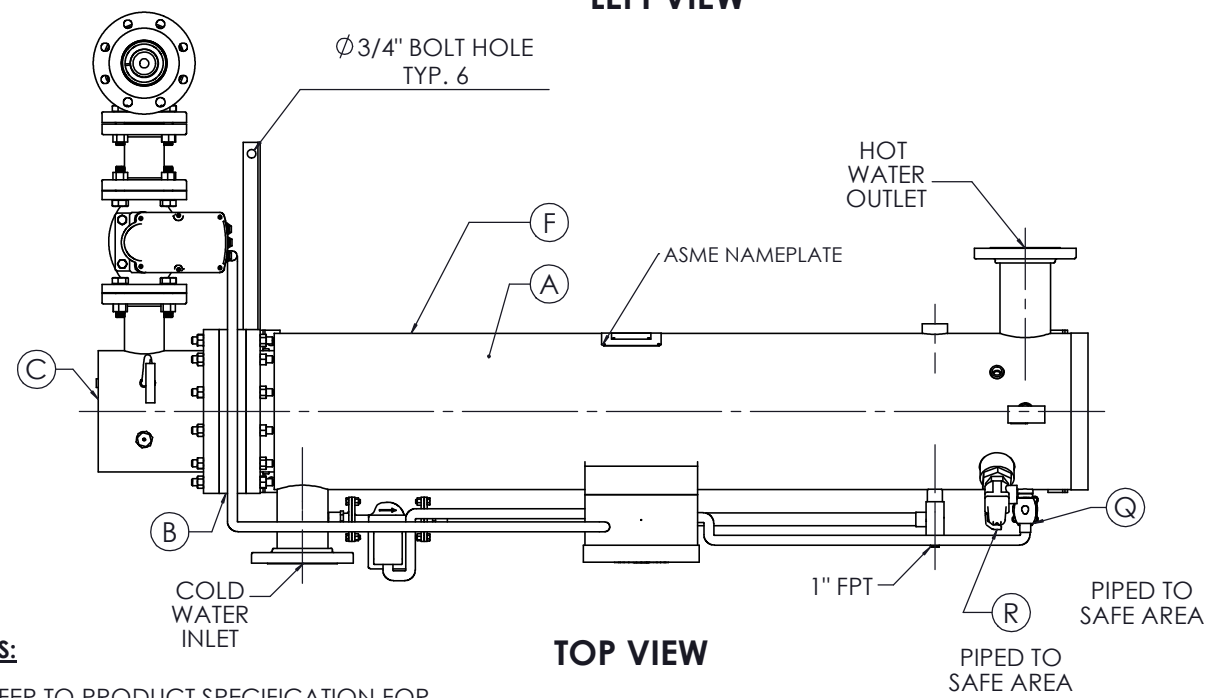
8 7 6 5 4 3 2 1



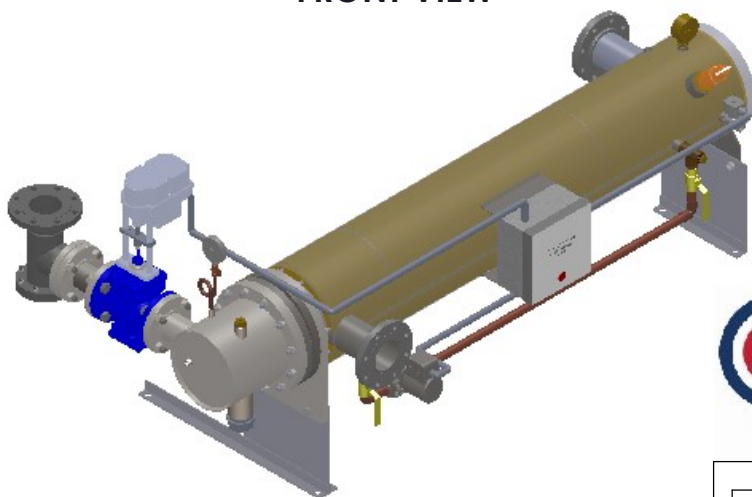
LEFT VIEW



FRONT VIEW



TOP VIEW

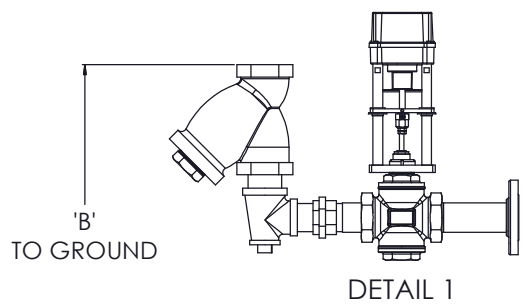


ISOMETRIC VIEW



NOTES:

1. REFER TO PRODUCT SPECIFICATION FOR DESCRIPTION OF LETTERED ITEMS.
2. **CONDENSATE:** CONDENSATE IS TO BE PIPED FROM HEATER WITHOUT LIFTS TO A VENTED RECEIVER OR DRAIN BELOW THE ELEVATION OF THE HEATER'S CONDENSATE OUTLET.
3. **INSTALLATION:** ALL COMPONENTS SHOWN HERE ARE PREWIRED & PREPARED BY ACE HEATERS, LLC. CUSTOMER WILL ONLY NEED TO PLUMB WATER TO BE HEATED, PIPE STEAM AND CONDENSATE LINES, AND BRING ELECTRICITY TO UNIT.
4. DIMENSIONS ARE SUBJECT TO CHANGE. CONSULT FACTORY FOR TIGHT DIMENSIONS.
5. THIS CONFIGURATION CHANGES FOR VALVE SIZE 1/2" TO 2". SEE DETAIL 1 FOR REFERENCE. APPROX. EMPTY WT:



DETAIL 1

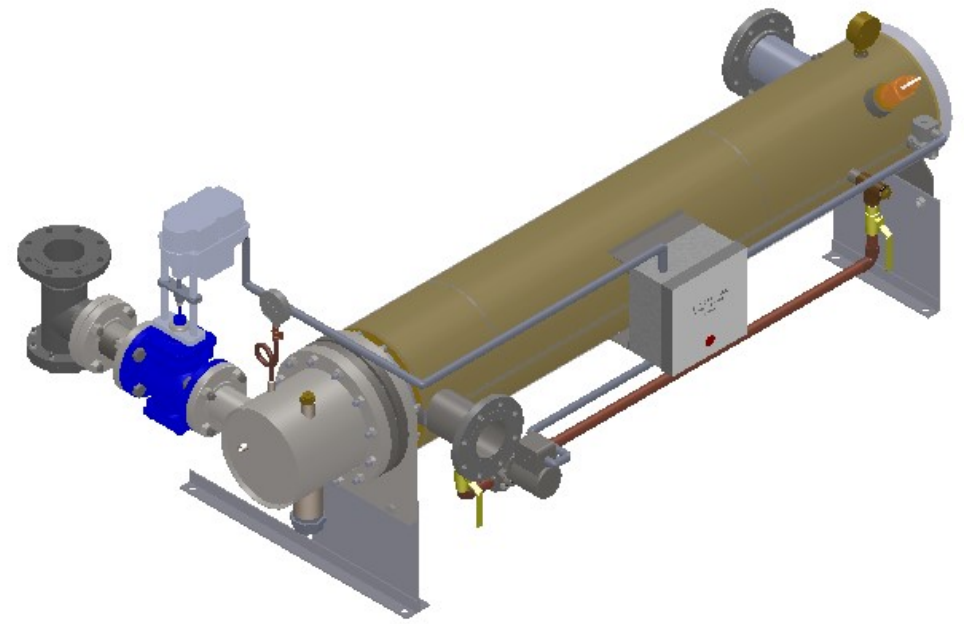
	CERTIFIED BY	
	<i>Ace Heaters, LLC</i>	
	www.aceheatingllc.com	
	MAXIMUM ALLOWABLE WORKING PRESSURE	
	SHELL	150 PSI @ 210 °F
TUBES	150 PSI @ 370 °F	
MIN. D.M.T. 0 °F @ 150 PSI		
S/N _____ YEAR BUILT _____		
MODEL _____		
CAPACITY _____ GAL SA. _____ SQFT		
JOB NO. _____ XXX		

<p>MADE IN USA</p>		<p>Ace Heaters, LLC</p> <p>www.aceheaters.com</p>	
MATERIAL:	TITLE:	SIHDW - COVER	
FINISH:	MINIPACK SYSTEM-HORIZONTAL DW		
WEIGHT:	STEAM- ELECT. OPERATED VALVE		
UNLESS OTHERWISE SPECIFIED DIMENSIONS ARE IN INCHES		PACKAGE	
TOLERANCE		DWG NO.	REV.
DECIMALS	ANGULAR	SIHDWSE	02
XX ± .05	± 5	SCALE: N/A	S/O #
.XXX ± .010	MAX SURF	SHEET: 1 OF 2	

THE INFORMATION CONTAINED WITHIN THIS DRAWING IS PROPRIETARY AND THE SOLE PROPERTY OF ACE HEATERS, LLC. ANY REPRODUCTION IN PART OR AS A WHOLE WITHOUT THE WRITTEN PERMISSION OF ACE HEATERS, LLC IS PROHIBITED.

8 7 6 5 4 3 2 1

		SIHDWSE, DW - STEAM - ELECTRIC VALVE PACKAGE							
		MP SIZE	5	6	8	10	12	14	16
D	ITEMS	1	10	10 1/2	11 1/2	13 1/2	14 1/2	15 1/2	16 1/2
	DIMENSION	2	7 11/16	8 3/16	10 1/8	10 13/16	12 1/2	12 1/4	14
		3	14 7/8	15 3/8	18 5/16	22	26 7/8	26 5/8	28 3/8
		4	10 5/8	11 1/4	12 1/8	13 3/8	15 5/8	17 11/16	18 9/16
		5	61 1/2	62	61 3/4	64	62 1/2	72	75 3/4
		6	80 3/16	81 5/16	83 9/16	87 1/8	94 7/16	104 1/16	110 15/16
		7	8 3/4	9 7/8	11 7/8	14 1/2	16 5/8	18 1/2	20
		8	65 7/8	66 7/8	68	69 1/2	70 11/16	80 5/16	83 7/16
		9	11 3/4	11 3/4	12 5/8	14 7/8	20 3/16	21 3/16	23 15/16
		10	1 3/8	1 1/2	2 1/16	2 1/2	3 1/16	3 1/8	3 1/4
		11	64	64	64	64	64	75	80
		12	2 1/2	2 1/2	2 1/2	2 1/2	2 1/2	2 1/2	2 1/2
INLET PIPE SIZE		2 1/2 FLG.	2 1/2 FLG.	3 FLG.	4 FLG.	4 FLG.	5 FLG.	6 FLG.	
OUTLET PIPE SIZE		2 1/2 FLG.	2 1/2 FLG.	3 FLG.	4 FLG.	4 FLG.	5 FLG.	6 FLG.	
		VALVE SIZE AND OVERALL LOCATION							
C	VALVE SIZE	ITEM							
	1/2"	'A'	3/4						
		'B'	20 1/16	20 9/16	23 1/2	27 3/16	32 1/16	31 13/16	33 9/16
		'C'	18 1/2	18 3/4	19 3/4	22 1/4	23 3/4	25 3/4	27 3/4
'D'		30 5/8	31 1/8	34 1/16	37 3/4	42 5/8	42 3/8	44 1/8	
3/4"	'A'	1							
	'B'	21 1/8	21 5/8	24 9/16	28 1/4	33 1/8	32 7/8	34 5/8	
	'C'	19 3/16	19 7/16	20 7/16	22 15/16	24 7/16	26 7/16	28 7/16	
	'D'	30 5/8	31 1/8	34 1/16	37 3/4	42 5/8	42 3/8	44 1/8	
1"	'A'	1 1/4							
	'B'	21 9/16	22 1/16	25	28 11/16	33 9/16	33 5/16	35 1/16	
	'C'	19 15/16	20 3/16	21 3/16	23 11/16	25 3/16	27 3/16	29 3/16	
	'D'	30 5/8	31 1/8	34 1/16	37 3/4	42 5/8	42 3/8	44 1/8	
1 1/4"	'A'	1 1/2							
	'B'	22 9/16	23 1/16	26	29 11/16	34 9/16	34 5/16	36 1/16	
	'C'	21 7/16	21 11/16	22 11/16	25 3/16	26 11/16	28 11/16	30 11/16	
	'D'	31 1/4	31 3/4	34 11/16	38 3/8	43 1/4	43	44 3/4	
1 1/2"	'A'	2							
	'B'	24 1/8	24 5/8	27 9/16	31 1/4	36 1/8	35 7/8	37 5/8	
	'C'	22 1/8	22 3/8	23 3/8	25 7/8	27 3/8	29 3/8	31 3/8	
	'D'	31 1/4	31 3/4	34 11/16	38 3/8	43 1/4	43	44 3/4	
2"	'A'	2 1/2							
	'B'	26 1/8	26 5/8	29 9/16	33 1/4	38 1/8	37 7/8	39 5/8	
	'C'	24	24 1/4	25 1/4	27 3/4	29 1/4	31 1/4	33 1/4	
	'D'	31 1/2	32	34 15/16	38 5/8	43 1/2	43 1/4	45	
2 1/2"	'A'	3							
	'B'	21	21 1/2	24 7/16	28 1/8	33	32 3/4	34 1/2	
	'C'	27 7/8	28 1/8	29 1/8	31 5/8	33 1/8	35 1/8	37 1/8	
	'D'	33 7/8	34 3/8	37 5/16	41	45 7/8	45 5/8	47 3/8	
3"	'A'	4							
	'B'	N/A	22 9/16	25 1/2	29 3/16	34 1/16	33 13/16	35 9/16	
	'C'	N/A	29 7/8	30 7/8	33 3/8	34 7/8	36 7/8	38 7/8	
	'D'	N/A	35	37 15/16	41 5/8	46 1/2	46 1/4	48	
4"	'A'	6							
	'B'	N/A	N/A	27 7/16	31 1/8	36	35 3/4	37 1/2	
	'C'	N/A	N/A	35 1/8	37 5/8	39 1/8	41 1/8	43 1/8	
	'D'	N/A	N/A	39 1/16	42 3/4	47 5/8	47 3/8	49 1/8	
5"	'A'	6							
	'B'	N/A	N/A	N/A	31 1/8	36	35 3/4	37 1/2	
	'C'	N/A	N/A	N/A	41 1/8	42 5/8	44 5/8	46 5/8	
	'D'	N/A	N/A	N/A	43 1/4	48 1/8	47 7/8	49 5/8	



ISOMETRIC VIEW

NOTES:

- 1/ DIMENSIONS IN INCHES, AND SUBJECT TO CHANGE WITHOUT NOTICE.
- 2/ DIM 'B', 'C', 'D' ARE TO BE APPROXIMATED ONLY, CONSULT FACTORY FOR TIGHT DIMENSIONS.



a nudyne company



Ace Heaters, LLC
www.aceheaters.com

MATERIAL :		TITLE : SIHDW - COVER	
FINISH :		MINIPACK SYSTEM-HORIZONTAL DW	
WEIGHT :		STEAM- ELECT. OPERATED VALVE PACKAGE	
UNLESS OTHERWISE SPECIFIED DIMENSIONS ARE IN INCHES		DWG NO.	REV.
TOLERANCE		SIHDWSE-DIM	02
DECIMALS .XX ± .05	ANGULAR ± .5	SCALE : N/A	S/O#
XXX ± .010	MAX SURF	SHEET : 2 OF 2	

THE INFORMATION CONTAINED WITHIN THIS DRAWING IS PROPRIETARY AND THE SOLE PROPERTY OF ACE HEATERS, LLC. ANY REPRODUCTION IN PART OR AS A WHOLE WITHOUT THE WRITTEN PERMISSION OF ACE HEATERS, LLC IS PROHIBITED.