

8

7

6

5

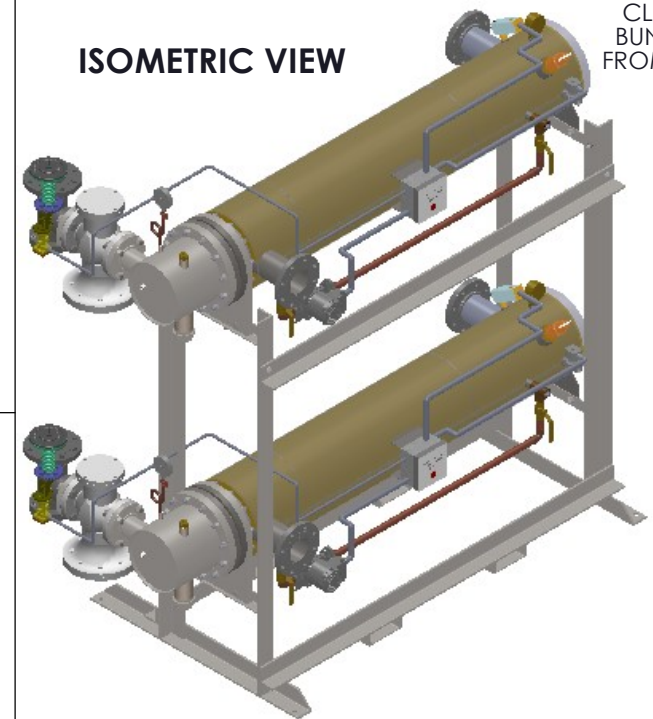
4

3

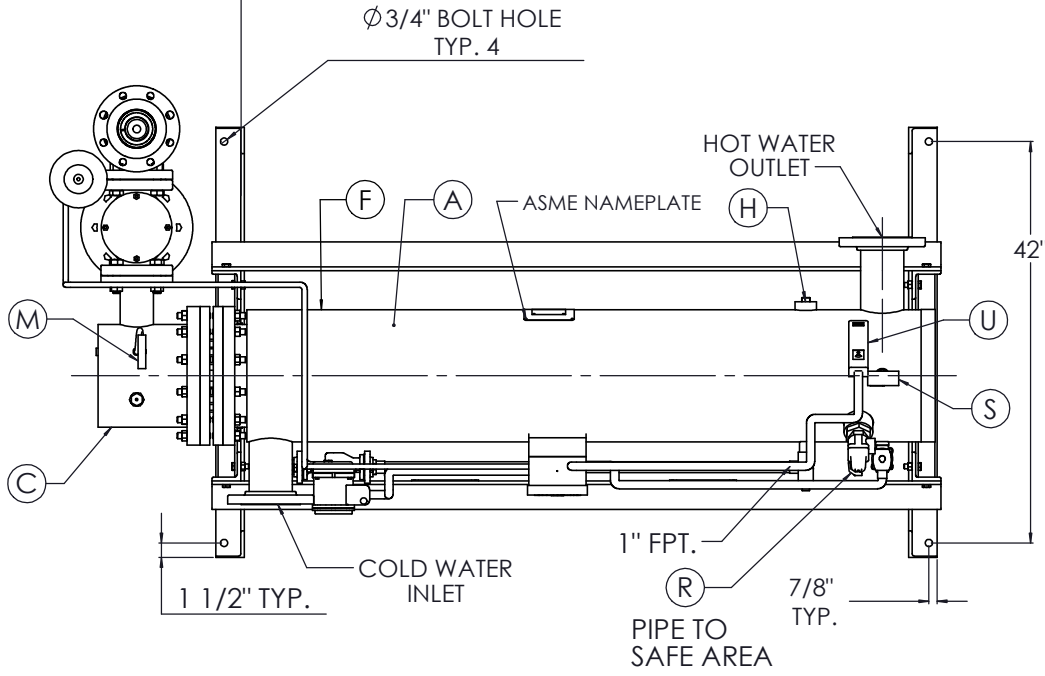
2

1

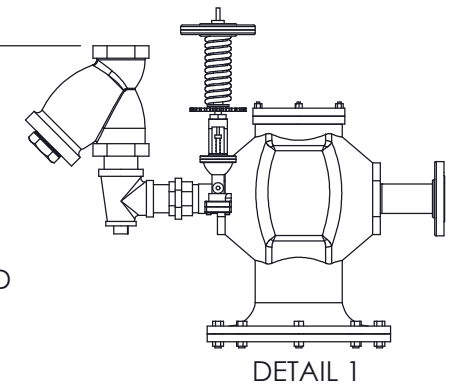
ISOMETRIC VIEW



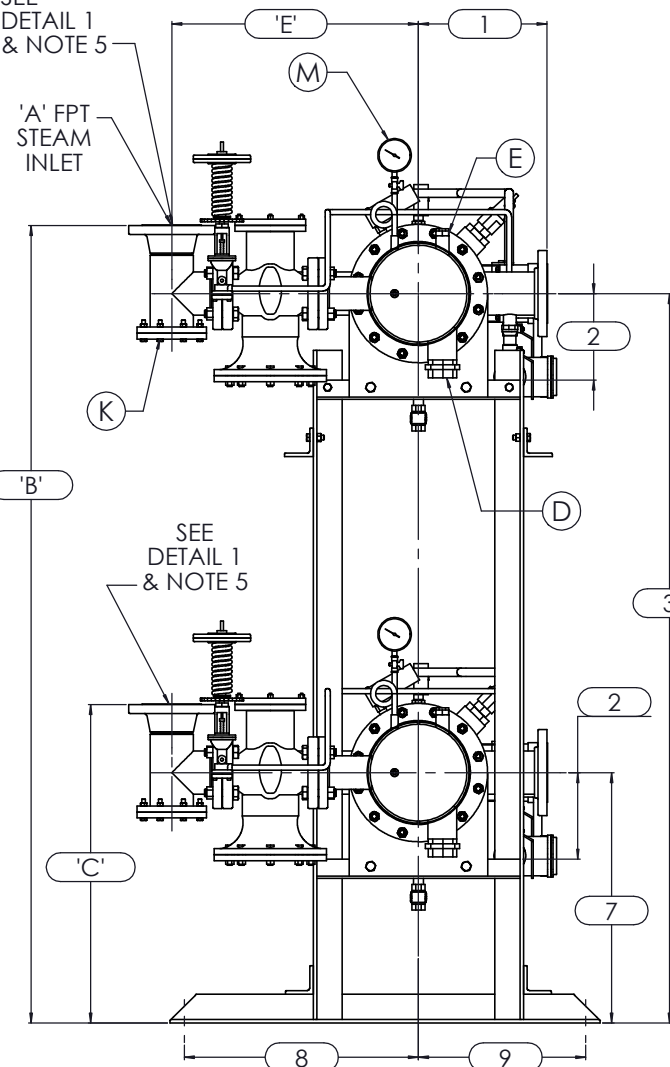
TOP VIEW



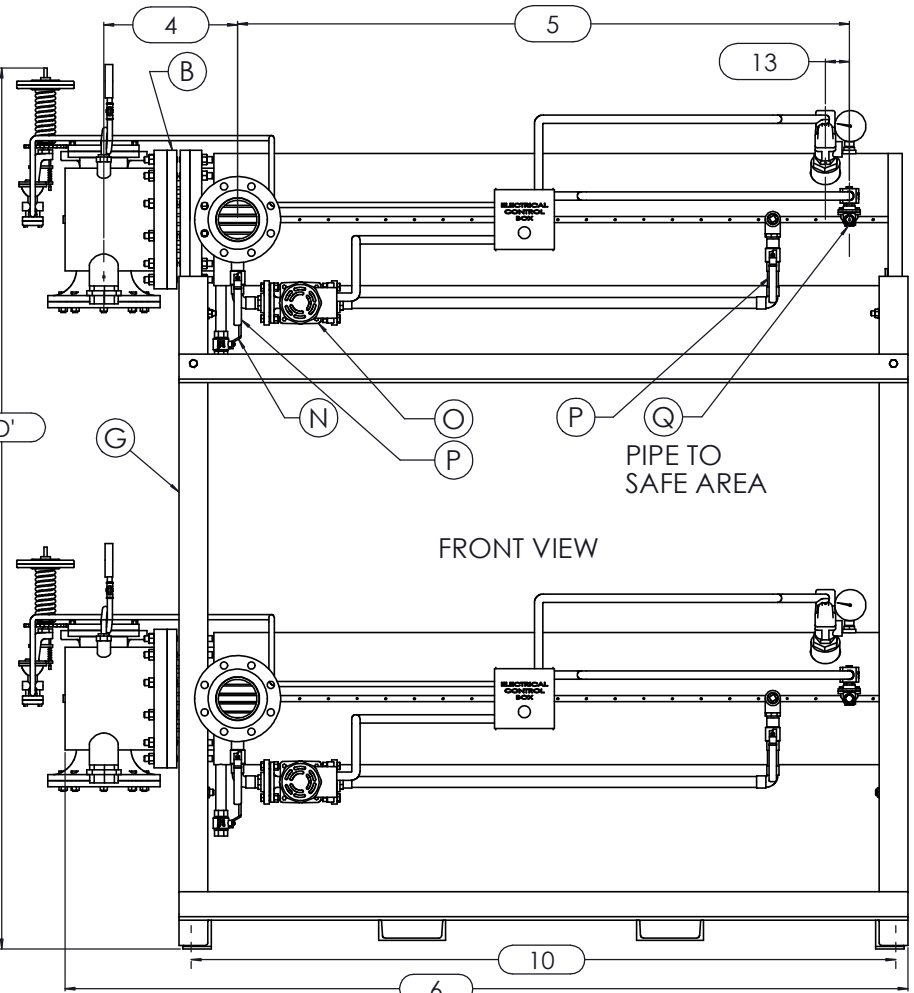
- NOTES:
- REFER TO PRODUCT SPECIFICATION FOR DESCRIPTION OF LETTERED ITEMS.
 - CONDENSATE:** CONDENSATE IS TO BE PIPED FROM HEATER WITHOUT LIFTS TO A VENTED RECEIVER OR DRAIN BELOW THE ELEVATION OF THE HEATER'S CONDENSATE OUTLET.
 - INSTALLATION:** ALL COMPONENTS SHOWN HERE ARE PREWIRED & PREPIPED BY ACE HEATERS, LLC. CUSTOMER WILL ONLY NEED TO PLUMB WATER TO BE HEATED, PIPE STEAM AND CONDENSATE LINES, AND BRING ELECTRICITY TO UNIT.
 - DIMENSIONS ARE SUBJECT TO CHANGE. CONSULT FACTORY FOR TIGHT DIMENSIONS.
 - THIS CONFIGURATION CHANGES FOR VALVE SIZE 1/2" TO 2". SEE DETAIL 1 FOR REFERENCE. APPROX. EMPTY WT:



SEE DETAIL 1 & NOTE 5



FRONT VIEW



'B' TO GROUND



| | |
|---|--|
| NB ASME U | CERTIFIED BY Ace Heaters, LLC www.aceheatingllc.com |
| | MAXIMUM ALLOWABLE WORKING PRESSURE SHELL 150 PSI @ 210 °F TUBES 150 PSI @ 370 °F MIN. D.M.T. 0 °F @ 150 PSI S/N _____ YEAR BUILT _____ |
| MODEL _____ CAPACITY _____ GAL SA. SQFT JOB NO. _____ XXX | |



| | |
|---|------------|
| ASME SECTION VIII DIV 1: DESIGN PRESSURE : (150) psig TEST PRESSURE : (195) psig MAX DESIGN TEMPERATURE : 370 °F | |
| NAME | DATE |
| DRAWN K.JIMENEZ | 04/12/2023 |
| CHLD | |
| APPVD | |
| SEC | |
| QA | |

| | |
|---|----------------------------------|
| MATERIAL : | TITLE : SIHDW - COVER |
| FINISH : | MINIPACK SYSTEM-HORIZONTAL DW |
| WEIGHT : | STEAM- PILOT OPERATED VALVE |
| UNLESS OTHERWISE SPECIFIED DIMENSIONS ARE IN INCHES | PACKAGE-DOUBLE UNIT ON DUAL RACK |
| TOLERANCE | DWG NO. SIHDWSP-2-DR |
| DECIMALS .XX ± .05 | ANGULAR ± 5 |
| .XXX ± .010 | MAX SURF |
| SCALE : N/A | S/O # |
| | REV. 02 |
| | SHEET: 1 OF 2 |

THE INFORMATION CONTAINED WITHIN THIS DRAWING IS PROPRIETARY AND THE SOLE PROPERTY OF ACE HEATERS, LLC. ANY REPRODUCTION IN PART OR AS A WHOLE WITHOUT THE WRITTEN PERMISSION OF ACE HEATERS, LLC IS PROHIBITED.

8

7

6

5

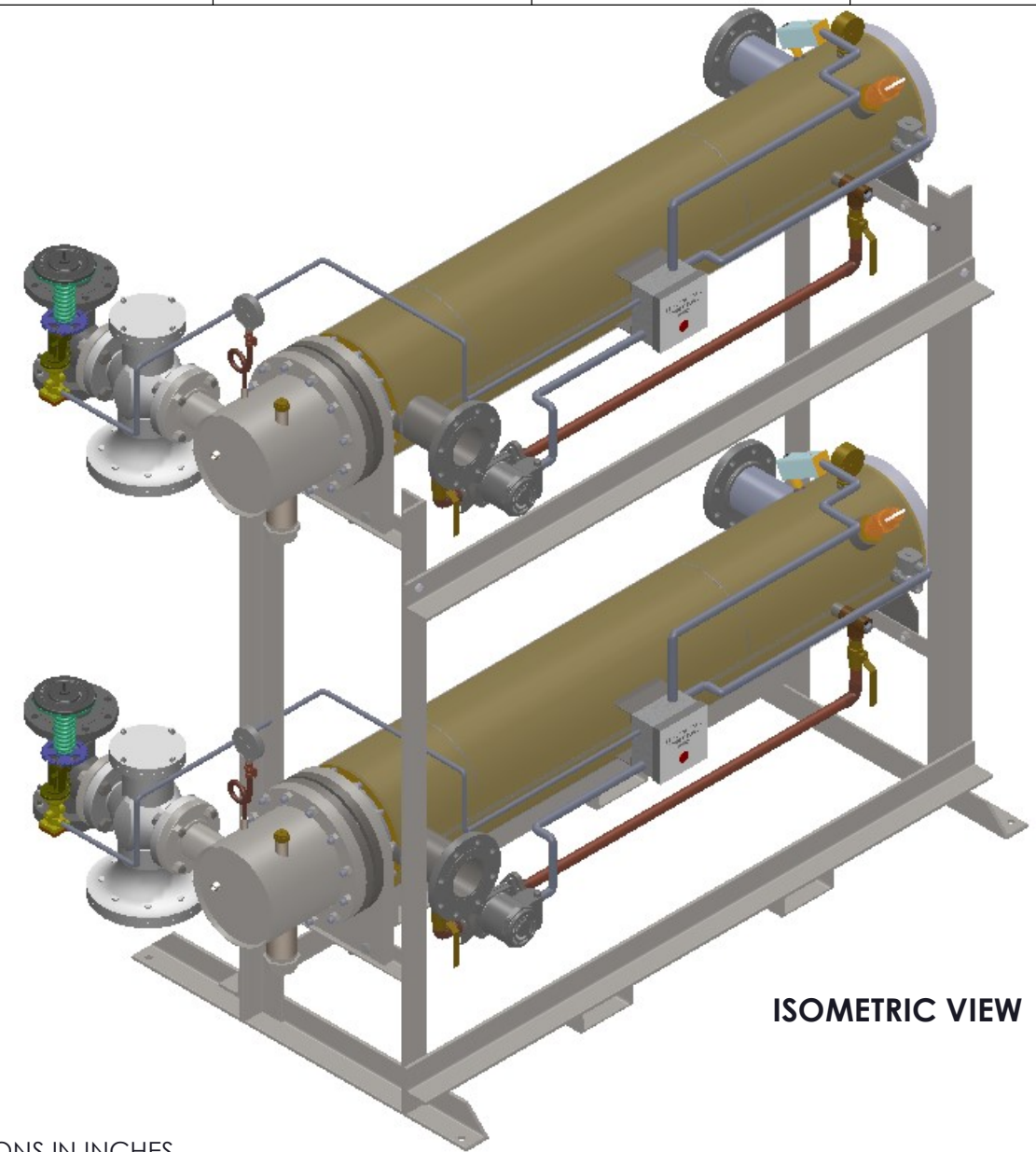
4

3

2

1

| | | 8 | 7 | 6 | 5 | 4 | 3 | 2 | 1 | |
|---|-----------|---------------------------------|------------|----------|----------|----------|----------|----------|-----------|--------|
| SIHSWSP-2-DR, SW - STEAM - PILOT VALVE PACKAGE, DUAL UNIT ON RACK | | | | | | | | | | |
| | | MP SIZE | 5 | 6 | 8 | 10 | 12 | 14 | 16 | |
| D | DIMENSION | ITEMS | 1 | 10 | 10 1/2 | 11 1/2 | 13 1/2 | 14 1/2 | 15 1/2 | 16 1/2 |
| | | 2 | 7 11/16 | 8 3/16 | 10 1/8 | 10 13/16 | 12 1/2 | 12 1/4 | 14 | |
| | | 3 | 59 15/16 | 60 7/16 | 62 3/8 | 76 1/16 | 77 3/4 | 77 1/2 | 79 1/4 | |
| | | 4 | 10 5/8 | 11 1/4 | 12 1/8 | 13 3/8 | 15 5/8 | 17 11/16 | 18 9/16 | |
| | | 5 | 61 1/2 | 62 | 61 3/4 | 64 | 62 1/2 | 72 | 75 3/4 | |
| | | 6 | 80 3/16 | 81 5/16 | 83 9/16 | 87 1/8 | 94 7/16 | 104 1/16 | 110 15/16 | |
| | | 7 | 22 15/16 | 23 7/16 | 25 3/8 | 26 3/16 | 27 7/8 | 27 5/8 | 29 3/8 | |
| | | 8 | 26 1/2 | 26 1/2 | 26 1/2 | 26 1/2 | 26 1/2 | 26 1/2 | 26 1/2 | |
| | | 9 | 15 1/2 | 15 1/2 | 15 1/2 | 15 1/2 | 15 1/2 | 15 1/2 | 15 1/2 | |
| | | 10 | 68 1/4 | 69 3/8 | 70 3/8 | 71 7/8 | 74 5/16 | 82 15/16 | 82 15/16 | |
| | | 11 | 1 3/8 | 1 1/2 | 2 1/16 | 2 1/2 | 3 1/16 | 3 1/8 | 3 1/4 | |
| | | 12 | 64 | 64 | 64 | 64 | 64 | 75 | 80 | |
| | | 13 | 2 1/2 | 2 1/2 | 2 1/2 | 2 1/2 | 2 1/2 | 2 1/2 | 2 1/2 | |
| INLET PIPE SIZE | | 2 1/2 FLG. | 2 1/2 FLG. | 3 FLG. | 4 FLG. | 4 FLG. | 5 FLG. | 6 FLG. | | |
| OUTLET PIPE SIZE | | 2 1/2 FLG. | 2 1/2 FLG. | 3 FLG. | 4 FLG. | 4 FLG. | 5 FLG. | 6 FLG. | | |
| VALVE SIZE | | VALVE SIZE AND OVERALL LOCATION | | | | | | | | |
| C | 1/2" | 'A' | 3/4 | | | | | | | |
| | | 'B' | 63 7/8 | 64 3/8 | 66 5/16 | 80 | 81 11/16 | 81 7/16 | 83 3/16 | |
| | | 'C' | 18 3/8 | 18 5/8 | 19 5/8 | 22 1/8 | 23 5/8 | 25 5/8 | 27 5/8 | |
| | | 'D' | 70 1/2 | 71 | 72 15/16 | 86 5/8 | 88 5/16 | 88 1/16 | 89 13/16 | |
| | | 'E' | 26 7/8 | 27 3/8 | 29 5/16 | 30 1/8 | 31 13/16 | 31 9/16 | 33 5/16 | |
| | 3/4" | 'A' | 1 | | | | | | | |
| | | 'B' | 66 3/16 | 66 11/16 | 68 5/8 | 82 5/16 | 84 | 83 3/4 | 85 1/2 | |
| | | 'C' | 19 5/8 | 19 7/8 | 20 7/8 | 23 3/8 | 24 7/8 | 26 7/8 | 28 7/8 | |
| | | 'D' | 70 1/2 | 71 | 72 15/16 | 86 5/8 | 88 5/16 | 88 1/16 | 89 13/16 | |
| | | 'E' | 29 3/16 | 29 11/16 | 31 5/8 | 32 7/16 | 34 1/8 | 33 7/8 | 35 5/8 | |
| 1" | 'A' | 1 1/4 | | | | | | | | |
| | 'B' | 66 5/8 | 67 1/8 | 69 1/16 | 82 3/4 | 84 7/16 | 84 3/16 | 85 15/16 | | |
| | 'C' | 22 1/8 | 22 3/8 | 23 3/8 | 25 7/8 | 27 3/8 | 29 3/8 | 31 3/8 | | |
| | 'D' | 71 1/4 | 71 3/4 | 73 11/16 | 87 3/8 | 89 1/16 | 88 13/16 | 90 9/16 | | |
| | 'E' | 29 5/8 | 30 1/8 | 32 1/16 | 32 7/8 | 34 9/16 | 34 5/16 | 36 1/16 | | |
| 1 1/4" | 'A' | 1 1/2 | | | | | | | | |
| | 'B' | 67 5/8 | 68 1/8 | 70 1/16 | 83 3/4 | 85 7/16 | 85 3/16 | 86 15/16 | | |
| | 'C' | 21 7/16 | 21 11/16 | 22 11/16 | 25 3/16 | 26 11/16 | 28 11/16 | 30 11/16 | | |
| | 'D' | 71 3/4 | 72 1/4 | 74 3/16 | 87 7/8 | 89 9/16 | 89 5/16 | 91 1/16 | | |
| | 'E' | 30 5/8 | 31 1/8 | 33 1/16 | 33 7/8 | 35 9/16 | 35 5/16 | 37 1/16 | | |
| 1 1/2" | 'A' | 2 | | | | | | | | |
| | 'B' | 69 3/16 | 69 11/16 | 71 5/8 | 85 5/16 | 87 | 86 3/4 | 88 1/2 | | |
| | 'C' | 23 3/16 | 23 7/16 | 24 7/16 | 26 15/16 | 28 7/16 | 30 7/16 | 32 7/16 | | |
| | 'D' | 72 | 72 1/2 | 74 7/16 | 88 1/8 | 89 13/16 | 89 9/16 | 91 5/16 | | |
| | 'E' | 32 3/16 | 32 11/16 | 34 5/8 | 35 7/16 | 37 1/8 | 36 7/8 | 38 5/8 | | |
| 2" | 'A' | 2 1/2 | | | | | | | | |
| | 'B' | 71 3/16 | 71 11/16 | 73 5/8 | 87 5/16 | 89 | 88 3/4 | 90 1/2 | | |
| | 'C' | 30 9/16 | 30 13/16 | 31 13/16 | 34 5/16 | 35 13/16 | 37 13/16 | 39 13/16 | | |
| | 'D' | 75 5/16 | 75 13/16 | 77 3/4 | 91 7/16 | 93 1/8 | 92 7/8 | 94 5/8 | | |
| | 'E' | 34 3/16 | 34 11/16 | 36 5/8 | 37 7/16 | 39 1/8 | 38 7/8 | 40 5/8 | | |
| 2 1/2" | 'A' | 3 | | | | | | | | |
| | 'B' | 66 1/16 | 66 9/16 | 68 1/2 | 82 3/16 | 83 7/8 | 83 5/8 | 85 3/8 | | |
| | 'C' | 20 5/8 | 20 7/8 | 21 7/8 | 24 3/8 | 25 7/8 | 27 7/8 | 29 7/8 | | |
| | 'D' | 72 5/8 | 73 1/8 | 75 1/16 | 88 3/4 | 90 7/16 | 90 3/16 | 91 15/16 | | |
| | 'E' | 29 1/16 | 29 9/16 | 31 1/2 | 32 5/16 | 34 | 33 3/4 | 35 1/2 | | |
| 3" | 'A' | 4 | | | | | | | | |
| | 'B' | N/A | 67 5/8 | 69 9/16 | 83 1/4 | 84 15/16 | 84 11/16 | 86 7/16 | | |
| | 'C' | N/A | 22 5/16 | 23 5/16 | 25 13/16 | 27 5/16 | 29 5/16 | 31 5/16 | | |
| | 'D' | N/A | 76 5/16 | 78 1/4 | 91 15/16 | 93 5/8 | 93 3/8 | 95 1/8 | | |
| | 'E' | N/A | 30 5/8 | 32 9/16 | 33 3/8 | 35 1/16 | 34 13/16 | 36 9/16 | | |
| 4" | 'A' | 6 | | | | | | | | |
| | 'B' | N/A | N/A | 71 1/2 | 85 3/16 | 86 7/8 | 86 5/8 | 88 3/8 | | |
| | 'C' | N/A | N/A | 19 9/16 | 19 9/16 | 19 9/16 | 19 9/16 | 19 9/16 | | |
| | 'D' | N/A | N/A | 77 3/4 | 91 7/16 | 93 1/8 | 92 7/8 | 94 5/8 | | |
| | 'E' | N/A | N/A | 34 1/2 | 35 5/16 | 37 | 36 3/4 | 38 1/2 | | |
| 5" | 'A' | 6 | | | | | | | | |
| | 'B' | N/A | N/A | N/A | 85 3/16 | 86 7/8 | 86 5/8 | 88 3/8 | | |
| | 'C' | N/A | N/A | N/A | 22 13/16 | 22 13/16 | 22 13/16 | 22 13/16 | | |
| | 'D' | N/A | N/A | N/A | 91 15/16 | 93 5/8 | 93 3/8 | 95 1/8 | | |
| | 'E' | N/A | N/A | N/A | 35 5/16 | 37 | 36 3/4 | 38 1/2 | | |



ISOMETRIC VIEW

NOTES:

- 1/ DIMENSIONS IN INCHES, AND SUBJECT TO CHANGE WITHOUT NOTICE.
- 2/ DIM 'B', 'C', 'D', 'E' ARE TO BE APPROXIMATED ONLY, CONSULT FACTORY FOR TIGHT DIMENSIONS.



| | |
|--|----------------------|
| ASME SECTION VIII DIV 1 : DESIGN PRESSURE : (150) psig TEST PRESSURE : (195) psig MAX DESIGN TEMPERATURE : 370 °F | |
| NAME | DATE |
| DRAWN | K.JIMENEZ 04/12/2023 |
| CHLD | |
| APPVD | |
| SEC | |
| QA | |

| | | | |
|---|--|--|--|
| MATERIAL : | | TITLE : SIHDW - COVER | |
| FINISH : | | MINIPACK SYSTEM-HORIZONTAL DW | |
| WEIGHT : | | STEAM- PILOT OPERATED VALVE PACKAGE-DOUBLE UNIT ON DUAL RACK | |
| UNLESS OTHERWISE SPECIFIED DIMENSIONS ARE IN INCHES | | DWG NO. SIHDWSP-2-DR-DIM | |
| TOLERANCE | | REV. 02 | |
| DECIMALS .XX ± .05 | | SCALE : N/A | |
| ANGULAR ± .5 | | S/O# | |
| XXX ± .010 MAX SURF | | SHEET : 2 OF 2 | |

THE INFORMATION CONTAINED WITHIN THIS DRAWING IS PROPRIETARY AND THE SOLE PROPERTY OF ACE HEATERS, LLC. ANY REPRODUCTION IN PART OR AS A WHOLE WITHOUT THE WRITTEN PERMISSION OF ACE HEATERS, LLC IS PROHIBITED.