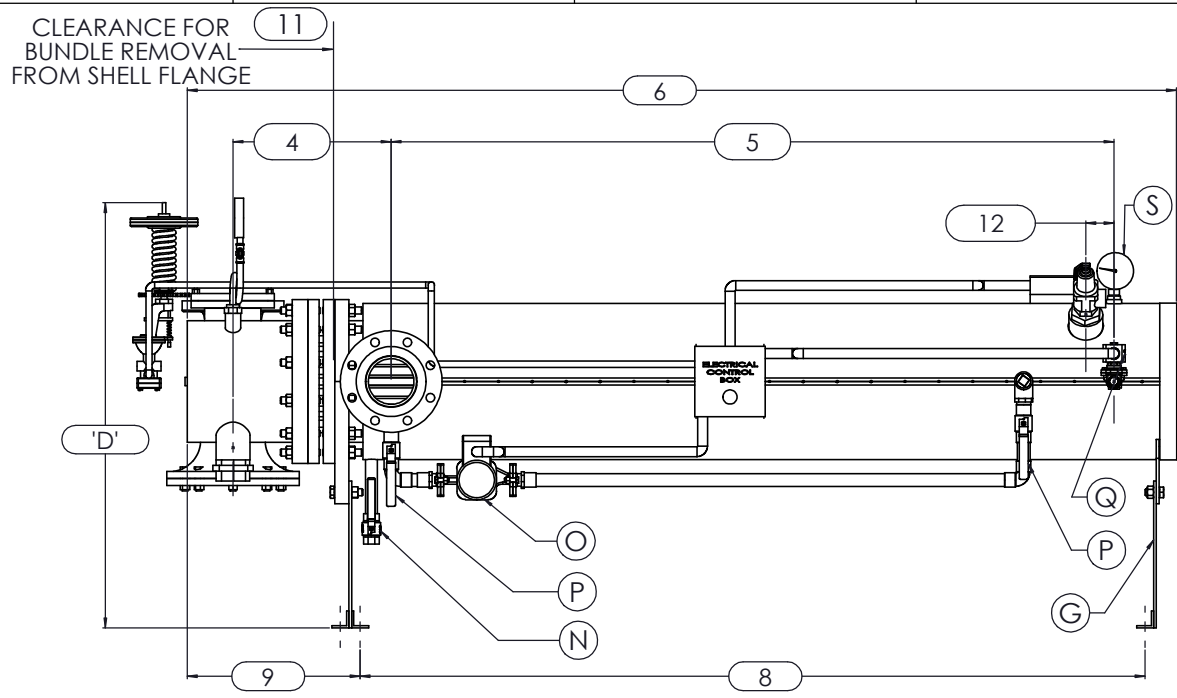
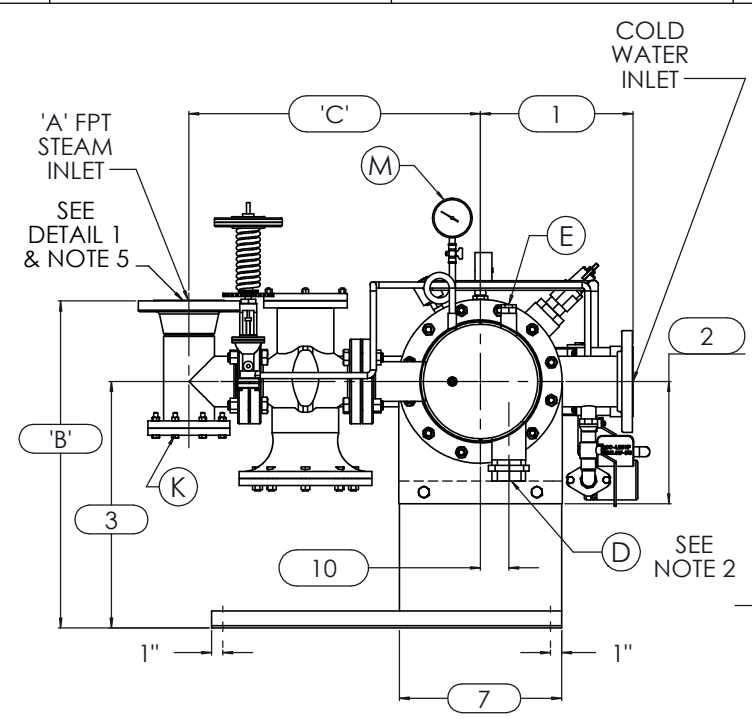


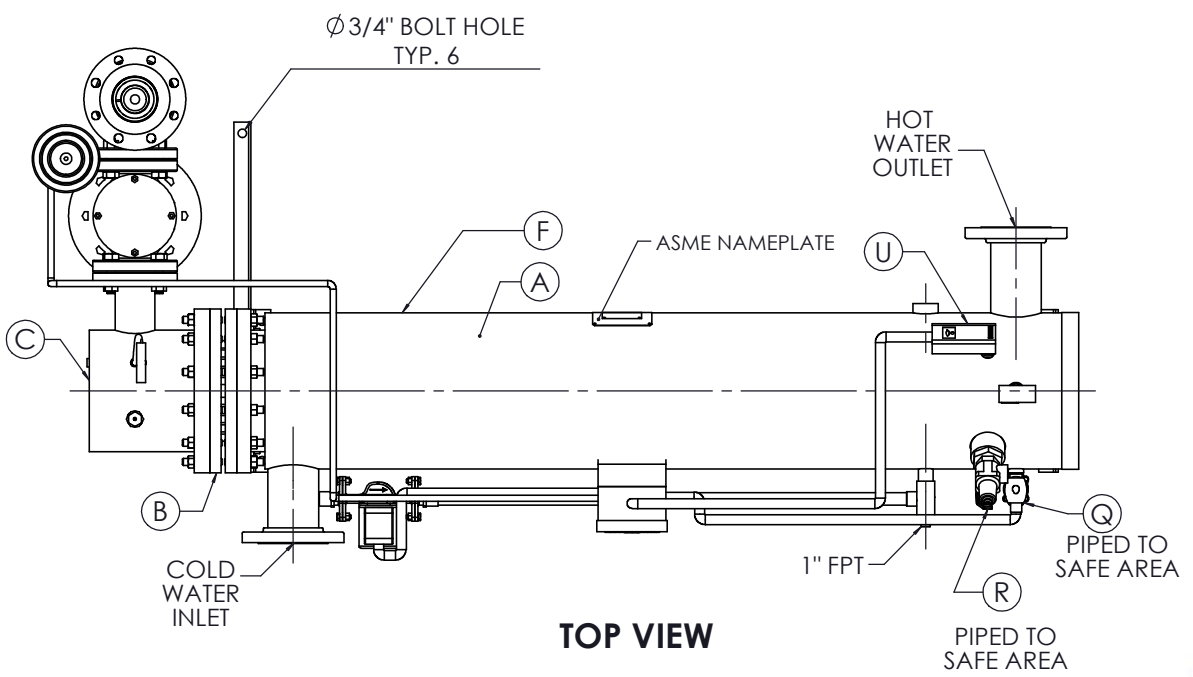
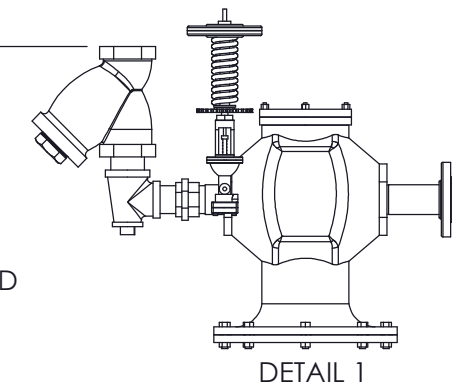
8 7 6 5 4 3 2 1



LEFT VIEW

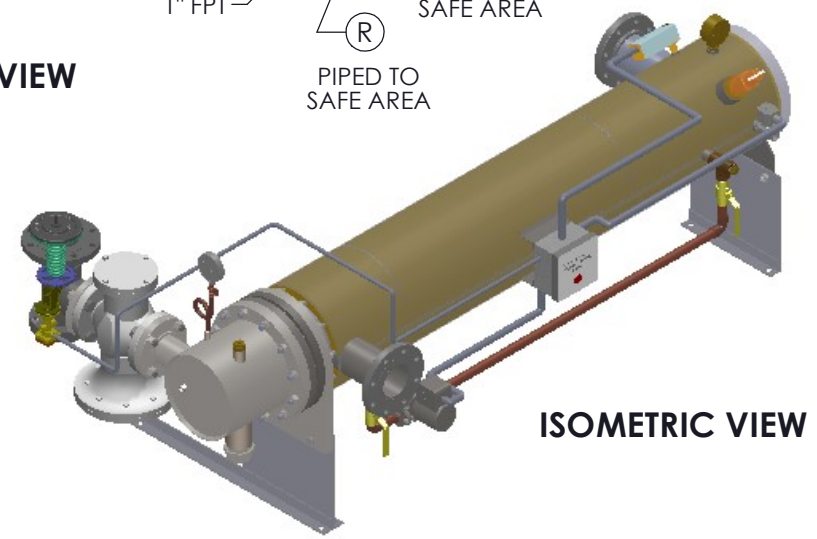


FRONT VIEW



TOP VIEW

- NOTES:
1. REFER TO PRODUCT SPECIFICATION FOR DESCRIPTION OF LETTERED ITEMS.
  2. CONDENSATE:  
CONDENSATE IS TO BE PIPED FROM HEATER WITHOUT LIFTS TO A VENTED RECEIVER OR DRAIN BELOW THE ELEVATION OF THE HEATER'S CONDENSATE OUTLET.
  3. INSTALLATION:  
ALL COMPONENTS SHOWN HERE ARE PREWIRED & PREPIPED BY ACE HEATERS, LLC. CUSTOMER WILL ONLY NEED TO PLUMB WATER TO BE HEATED, PIPE STEAM AND CONDENSATE LINES, AND BRING ELECTRICITY TO UNIT.
  4. DIMENSIONS ARE SUBJECT TO CHANGE. CONSULT FACTORY FOR TIGHT DIMENSIONS.
  5. THIS CONFIGURATION CHANGES FOR VALVE SIZE 1/2" TO 2". SEE DETAIL 1 FOR REFERENCE. APPROX. EMPTY WT:



ISOMETRIC VIEW

|                 |  |
|-----------------|--|
| NB<br>ASME<br>U | CERTIFIED BY<br><b>Ace Heaters, LLC</b><br>www.aceheatingllc.com   |
|                 | MAXIMUM ALLOWABLE WORKING PRESSURE<br>SHELL 150 PSI @ 210 °F<br>TUBES 150 PSI @ 370 °F<br>MIN. D.M.T. 0 °F @ 150 PSI<br>S/N _____ YEAR BUILT _____ |
|                 | MODEL _____<br>CAPACITY _____ GAL SA. SQFT<br>JOB NO. _____ XXX  |



|  |            |
|--|------------|
| ASME SECTION VIII DIV 1 :<br>DESIGN PRESSURE : (150) psig<br>TEST PRESSURE : (195) psig<br>MAX DESIGN TEMPERATURE : 370 °F |            |
| NAME   | DATE       |
| DRAWN K.JIMENEZ  | 04/12/2023 |
| CHLD   |            |
| APPVD  |            |
| SEC  |            |
| QA   |            |

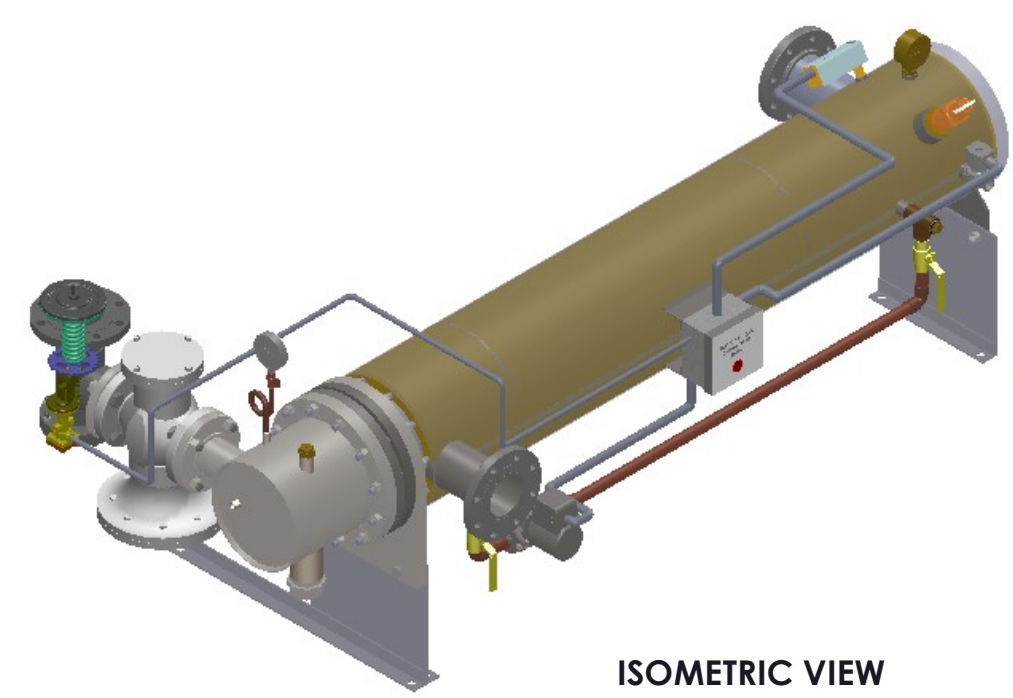
|   |  |  |  |
|---|--|--|--|
| MATERIAL :  |  | TITLE : SIHDW - COVER<br>MINIPACK SYSTEM-HORIZONTAL DW<br>STEAM- PILOT OPERATED<br>VALVE PACKAGE |  |
| FINISH : N/A  |  | DWG NO. SIHDWSP  |  |
| WEIGHT : N/A  |  | REV. 02  |  |
| UNLESS OTHERWISE SPECIFIED<br>DIMENSIONS ARE IN INCHES<br>TOLERANCE |  | SCALE : N/A  |  |
| DECIMALS .XX ± .05  |  | S/O#   |  |
| ANGULAR .XXX ± .010   |  | MAX SURF   |  |
|   |  | SHEET : 1 OF 2   |  |

THE INFORMATION CONTAINED WITHIN THIS DRAWING IS PROPRIETARY AND THE SOLE PROPERTY OF ACE HEATERS, LLC. ANY REPRODUCTION IN PART OR AS A WHOLE WITHOUT THE WRITTEN PERMISSION OF ACE HEATERS, LLC IS PROHIBITED.

8 7 6 5 4 3 2 1

| SIHDWSP, DW - STEAM - PILOT VALVE PACKAGE |           |                 |            |            |            |          |          |          |           |
|---|-----------|-----------------|------------|------------|------------|----------|----------|----------|-----------|
|   | MP SIZE   | 5               | 6          | 8          | 10         | 12       | 14       | 16       |           |
| D   | ITEMS     | 1               | 10         | 10 1/2     | 11 1/2     | 13 1/2   | 14 1/2   | 15 1/2   | 16 1/2    |
|   | DIMENSION | 2               | 7 11/16    | 8 3/16     | 10 1/8     | 10 13/16 | 12 1/2   | 12 1/4   | 14        |
|   |           | 3               | 14 7/8     | 15 3/8     | 18 5/16    | 22       | 26 7/8   | 26 5/8   | 28 3/8    |
|   |           | 4               | 10 5/8     | 11 1/4     | 12 1/8     | 13 3/8   | 15 5/8   | 17 11/16 | 18 9/16   |
|   |           | 5               | 61 1/2     | 62         | 61 3/4     | 64       | 62 1/2   | 72       | 75 3/4    |
|   |           | 6               | 80 3/16    | 81 5/16    | 83 9/16    | 87 1/8   | 94 7/16  | 104 1/16 | 110 15/16 |
|   |           | 7               | 8 3/4      | 9 7/8      | 11 7/8     | 14 1/2   | 16 5/8   | 18 1/2   | 20        |
|   |           | 8               | 65 7/8     | 66 7/8     | 68         | 69 1/2   | 70 11/16 | 80 5/16  | 83 7/16   |
|   |           | 9               | 11 3/4     | 11 3/4     | 12 5/8     | 14 7/8   | 20 3/16  | 21 3/16  | 23 15/16  |
|   |           | 10              | 1 3/8      | 1 1/2      | 2 1/16     | 2 1/2    | 3 1/16   | 3 1/8    | 3 1/4     |
|   |           | 11              | 64         | 64         | 64         | 64       | 64       | 75       | 80        |
|   |           | 12              | 2 1/2      | 2 1/2      | 2 1/2      | 2 1/2    | 2 1/2    | 2 1/2    | 2 1/2     |
|   |           | INLET PIPE SIZE |            | 2 1/2 FLG. | 2 1/2 FLG. | 3 FLG.   | 4 FLG.   | 4 FLG.   | 5 FLG.    |
| OUTLET PIPE SIZE                          |           | 2 1/2 FLG.      | 2 1/2 FLG. | 3 FLG.     | 4 FLG.     | 4 FLG.   | 5 FLG.   | 6 FLG.   |           |

| VALVE SIZE AND OVERALL LOCATION |        |   |          |          |          |          |          |          |          |
|---------------------------------|--------|---|----------|----------|----------|----------|----------|----------|----------|
| VALVE SIZE                      | ITEM   |   |          |          |          |          |          |          |          |
| C                               | 1/2"   | A | 3/4      |          |          |          |          |          |          |
|                                 |        | B | 20 1/16  | 20 9/16  | 23 1/2   | 27 3/16  | 32 1/16  | 31 13/16 | 33 9/16  |
|                                 |        | C | 18 3/8   | 18 5/8   | 19 5/8   | 22 1/8   | 23 5/8   | 25 5/8   | 27 5/8   |
|                                 |        | D | 25 7/16  | 25 15/16 | 28 7/8   | 32 9/16  | 37 7/16  | 37 3/16  | 38 15/16 |
| B                               | 3/4"   | A | 1        |          |          |          |          |          |          |
|                                 |        | B | 21 1/8   | 21 5/8   | 24 9/16  | 28 1/4   | 33 1/8   | 32 7/8   | 34 5/8   |
|                                 |        | C | 19 5/8   | 19 7/8   | 20 7/8   | 23 3/8   | 24 7/8   | 26 7/8   | 28 7/8   |
|                                 |        | D | 25 7/16  | 25 15/16 | 28 7/8   | 32 9/16  | 37 7/16  | 37 3/16  | 38 15/16 |
| A                               | 1"     | A | 1 1/4    |          |          |          |          |          |          |
|                                 |        | B | 21 9/16  | 22 1/16  | 25       | 28 11/16 | 33 9/16  | 33 5/16  | 35 1/16  |
|                                 |        | C | 20 13/16 | 21 1/16  | 22 1/16  | 24 9/16  | 26 1/16  | 28 1/16  | 30 1/16  |
|                                 |        | D | 26 3/16  | 26 11/16 | 29 5/8   | 33 5/16  | 38 3/16  | 37 15/16 | 39 11/16 |
| A                               | 1 1/4" | A | 1 1/2    |          |          |          |          |          |          |
|                                 |        | B | 22 9/16  | 23 1/16  | 26       | 29 11/16 | 34 9/16  | 34 5/16  | 36 1/16  |
|                                 |        | C | 21 7/16  | 21 11/16 | 22 11/16 | 25 3/16  | 26 11/16 | 28 11/16 | 30 11/16 |
|                                 |        | D | 26 11/16 | 27 3/16  | 30 1/8   | 33 13/16 | 38 11/16 | 38 7/16  | 40 3/16  |
| B                               | 1 1/2" | A | 2        |          |          |          |          |          |          |
|                                 |        | B | 24 1/8   | 24 5/8   | 27 9/16  | 31 1/4   | 36 1/8   | 35 7/8   | 37 5/8   |
|                                 |        | C | 23 3/16  | 23 7/16  | 24 7/16  | 26 15/16 | 28 7/16  | 30 7/16  | 32 7/16  |
|                                 |        | D | 26 15/16 | 27 7/16  | 30 3/8   | 34 1/16  | 38 15/16 | 38 11/16 | 40 7/16  |
| A                               | 2"     | A | 2 1/2    |          |          |          |          |          |          |
|                                 |        | B | 26 1/8   | 26 5/8   | 29 9/16  | 33 1/4   | 38 1/8   | 37 7/8   | 39 5/8   |
|                                 |        | C | 30 9/16  | 30 13/16 | 31 13/16 | 34 5/16  | 35 13/16 | 37 13/16 | 39 13/16 |
|                                 |        | D | 30 1/4   | 30 3/4   | 33 11/16 | 37 3/8   | 42 1/4   | 42       | 43 3/4   |
| A                               | 2 1/2" | A | 3        |          |          |          |          |          |          |
|                                 |        | B | 21       | 21 1/2   | 24 7/16  | 28 1/8   | 33       | 32 3/4   | 34 1/2   |
|                                 |        | C | 20 5/8   | 20 7/8   | 21 7/8   | 24 3/8   | 25 7/8   | 27 7/8   | 29 7/8   |
|                                 |        | D | 27 9/16  | 28 1/16  | 31       | 34 11/16 | 39 9/16  | 39 5/16  | 41 1/16  |
| A                               | 3"     | A | 4        |          |          |          |          |          |          |
|                                 |        | B | N/A      | 22 9/16  | 25 1/2   | 29 3/16  | 34 1/16  | 33 13/16 | 35 9/16  |
|                                 |        | C | N/A      | 22 5/16  | 23 5/16  | 25 13/16 | 27 5/16  | 29 5/16  | 31 5/16  |
|                                 |        | D | N/A      | 31 1/4   | 34 3/16  | 37 7/8   | 42 3/4   | 42 1/2   | 44 1/4   |
| A                               | 4"     | A | 6        |          |          |          |          |          |          |
|                                 |        | B | N/A      | N/A      | 27 7/16  | 31 1/8   | 36       | 35 3/4   | 37 1/2   |
|                                 |        | C | N/A      | N/A      | 27 9/16  | 30 1/16  | 31 9/16  | 33 9/16  | 35 9/16  |
|                                 |        | D | N/A      | N/A      | 33 11/16 | 37 3/8   | 42 1/4   | 42       | 43 3/4   |
| A                               | 5"     | A | 6        |          |          |          |          |          |          |
|                                 |        | B | N/A      | N/A      | N/A      | 31 1/8   | 36       | 35 3/4   | 37 1/2   |
|                                 |        | C | N/A      | N/A      | N/A      | 33 5/16  | 34 13/16 | 36 13/16 | 38 13/16 |
|                                 |        | D | N/A      | N/A      | N/A      | 37 7/8   | 42 3/4   | 42 1/2   | 44 1/4   |




ISOMETRIC VIEW

**NOTES:**

- 1/ DIMENSIONS IN INCHES, AND SUBJECT TO CHANGE WITHOUT NOTICE.
- 2/ DIM 'B', 'C', 'D' ARE TO BE APPROXIMATED ONLY, CONSULT FACTORY FOR TIGHT DIMENSIONS.



|   |  |  |
|---|--|--|
| <br><b>MADE IN USA</b>                                   | <b>Ace Heaters, LLC</b><br><small>www.aceheaters.com</small> |  |
|   | MATERIAL :<br>FINISH :<br>WEIGHT :                           | TITLE : SIHDW - COVER<br>MINIPACK SYSTEM-HORIZONTAL DW<br>STEAM- PILOT OPERATED<br>VALVE PACKAGE |
| UNLESS OTHERWISE SPECIFIED<br>DIMENSIONS ARE IN INCHES<br>TOLERANCE<br>DECIMALS    ANGULAR<br>.XX ± .05       ± .5<br>.XXX ± .010    MAX SURF | DWG NO. SIHDWSP-DIM<br>REV. 02                               | SCALE : N/A    S/O #<br>SHEET : 2 OF 2   |

THE INFORMATION CONTAINED WITHIN THIS DRAWING IS PROPRIETARY AND THE SOLE PROPERTY OF ACE HEATERS, LLC. ANY REPRODUCTION IN PART OR AS A WHOLE WITHOUT THE WRITTEN PERMISSION OF ACE HEATERS, LLC IS PROHIBITED.