

8

7

6

5

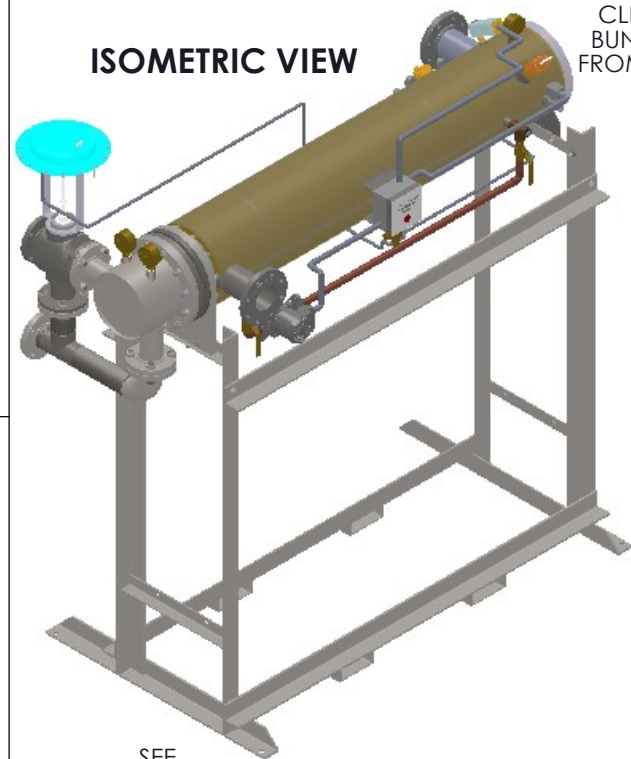
4

3

2

1

### ISOMETRIC VIEW



CLEARANCE FOR BUNDLE REMOVAL FROM SHELL FLANGE

12

Ø3/4" BOLT HOLE TYP. 4

HOT WATER OUTLET

SEE DETAIL 2

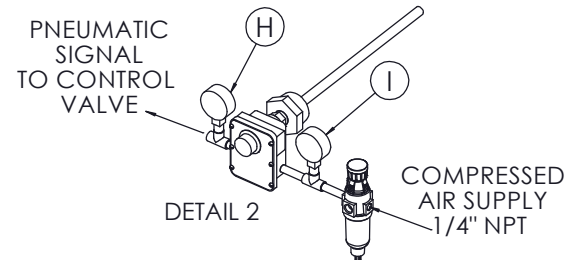
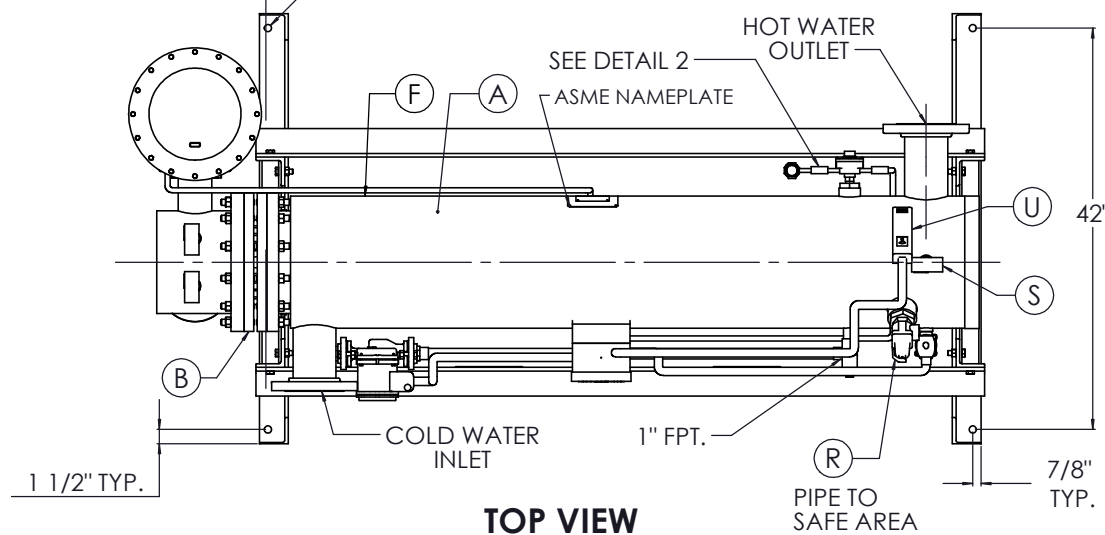
ASME NAMEPLATE

### NOTES:

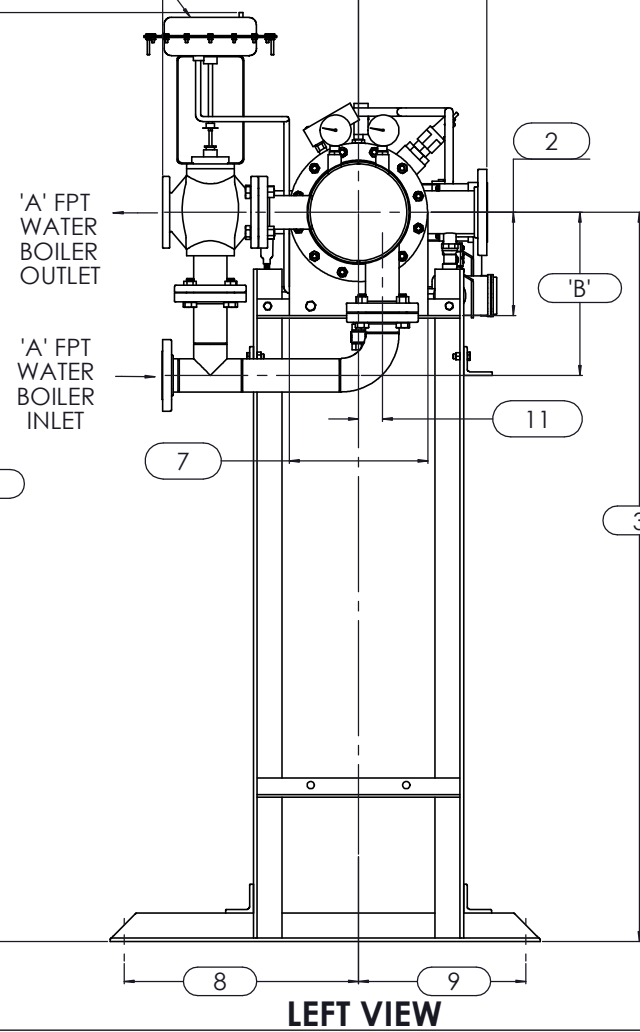
1. REFER TO PRODUCT SPECIFICATION FOR DESCRIPTION OF LETTERED ITEMS.
2. INSTALLATION: ALL COMPONENTS SHOWN HERE ARE PREWIRED & PREPIPED BY ACE HEATERS, LLC. CUSTOMER WILL ONLY NEED TO PLUMB WATER TO BE HEATED, PIPE STEAM AND CONDENSATE LINES, AND BRING ELECTRICITY TO UNIT.
3. DIMENSIONS ARE SUBJECT TO CHANGE. CONSULT FACTORY FOR TIGHT DIMENSIONS.
4. THIS CONFIGURATION CHANGES FOR VALVE SIZE 1/2" TO 2". SEE DETAIL 1 FOR REFERENCE.

APPROX. EMPTY WT:

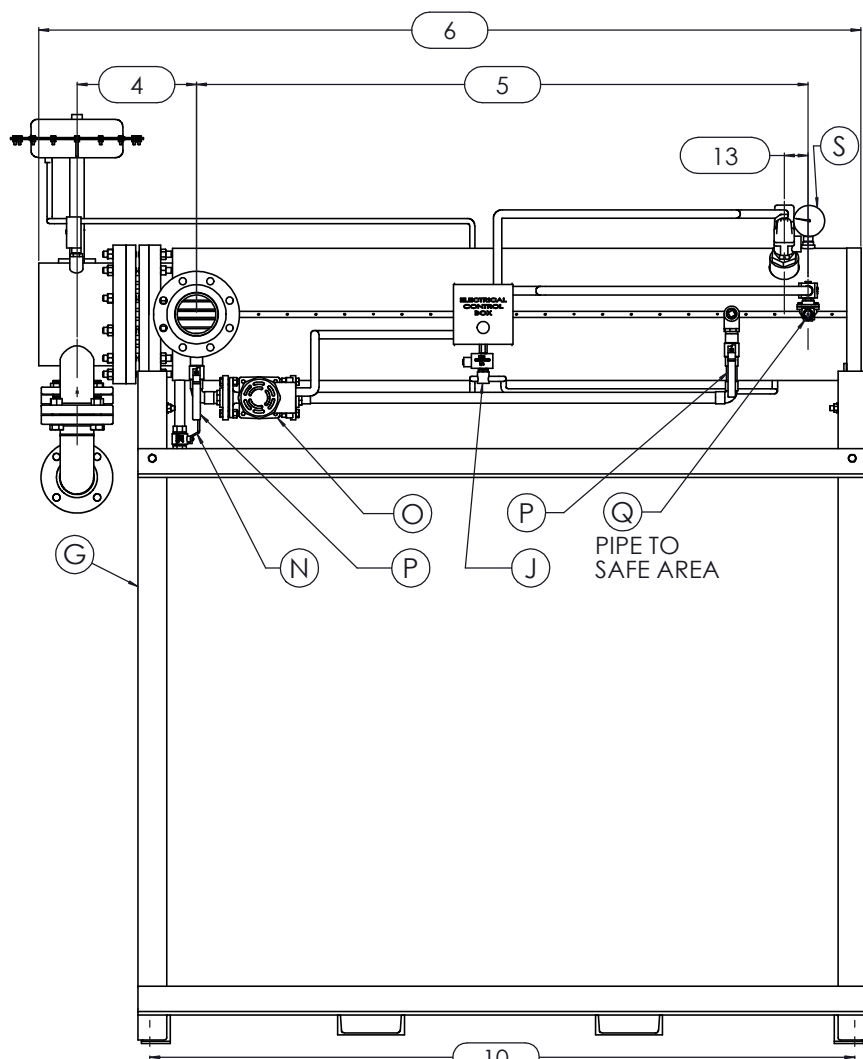
### TOP VIEW



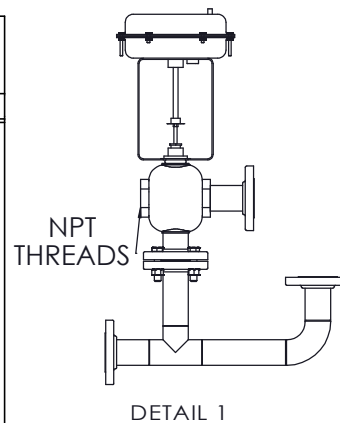
SEE DETAIL 1 & NOTE 4



### LEFT VIEW



### FRONT VIEW



DETAIL 1



NB ASME U	CERTIFIED BY <b>Ace Heaters, LLC</b> www.aceheatingllc.com
	MAXIMUM ALLOWABLE WORKING PRESSURE SHELL 150 PSI @ 210 °F TUBES 150 PSI @ 370 °F MIN. D.M.T. 0 °F @ 150 PSI S/N _____ YEAR BUILT _____ MODEL _____ CAPACITY _____ GAL SA. SQFT JOB NO. _____ XXX



ASME SECTION VIII DIV 1 : DESIGN PRESSURE : (150) psig TEST PRESSURE : (195) psig MAX DESIGN TEMPERATURE : 370 °F	
NAME	DATE
DRAWN K. JIMENEZ	04/12/2023
CHLD	
APPVD	
SEC	
QA	

MATERIAL :	TITLE : SIHDW - COVER
FINISH :	MINIPACK SYSTEM-HORIZONTAL DW
WEIGHT :	3W WATER- PNEUMATIC OPERATED VALVE PACKAGE-SINGLE UNIT ON DUAL RACK
UNLESS OTHERWISE SPECIFIED DIMENSIONS ARE IN INCHES TOLERANCE	DWG NO. SIHDWWA-1-DR-3W
DECIMALS ± .05	ANGULAR ± 5
.XXX ± .010	MAX SURF
SCALE : N/A	S/O #
	SHEET : 1 OF 2

THE INFORMATION CONTAINED WITHIN THIS DRAWING IS PROPRIETARY AND THE SOLE PROPERTY OF ACE HEATERS, LLC. ANY REPRODUCTION IN PART OR AS A WHOLE WITHOUT THE WRITTEN PERMISSION OF ACE HEATERS, LLC IS PROHIBITED.

8

7

6

5

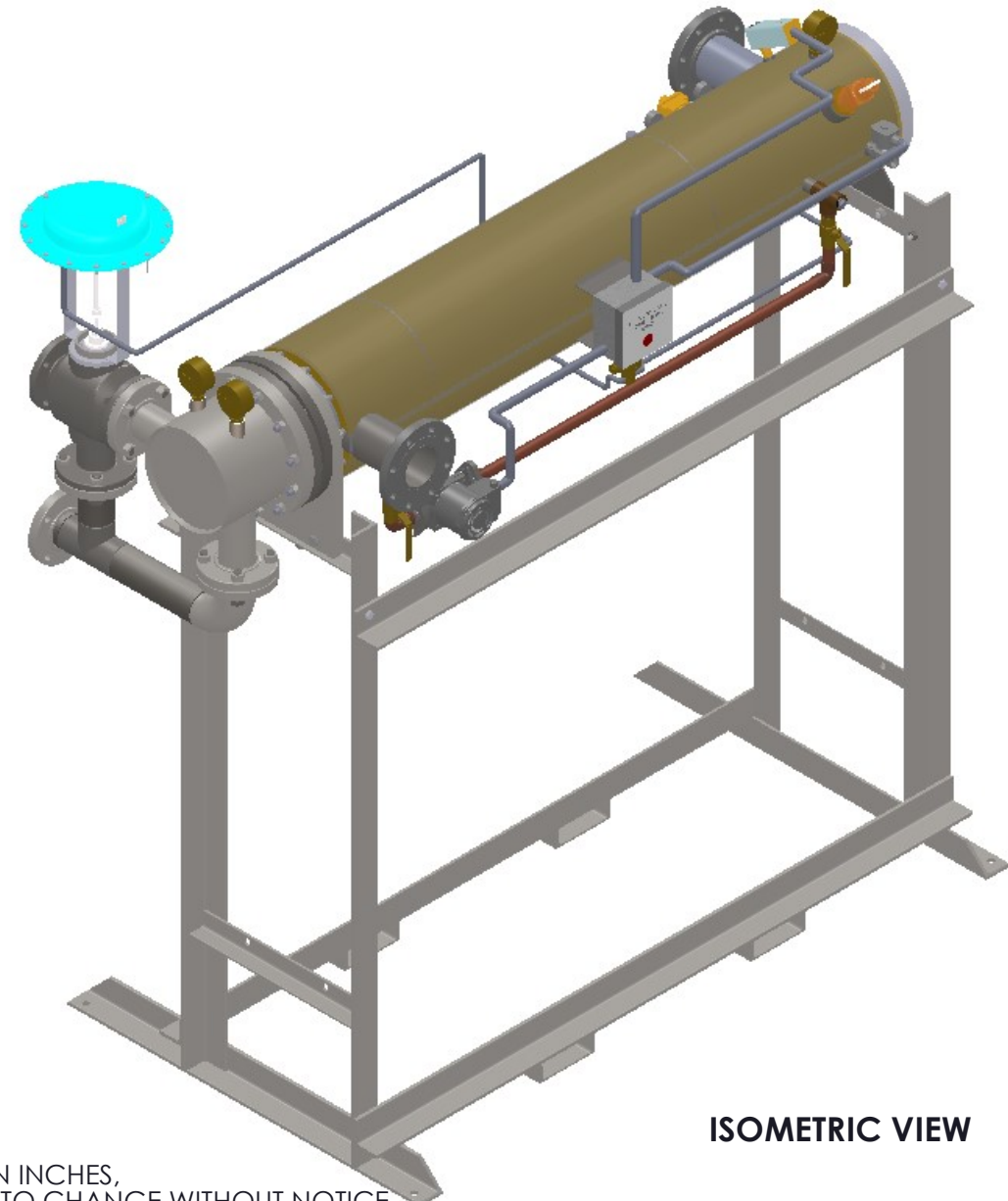
4

3

2

1

		SIHDWWA-3W-1DR - DIM, DW - WATER - PNEUMATIC 3-WAY MIXING VALVE PACKAGE, SINGLE UNIT ON RACK							
		MP SIZE	5	6	8	10	12	14	16
D	ITEMS	1	10	10 1/2	11 1/2	13 1/2	14 1/2	15 1/2	16 1/2
	DIMENSION	2	7 11/16	8 3/16	10 1/8	10 13/16	12 1/2	12 1/4	14
		3	59 15/16	60 7/16	62 3/8	76 1/16	77 3/4	77 1/2	79 1/4
		4	10 5/8	11 1/4	12 1/8	13 3/8	15 5/8	17 11/16	18 9/16
		5	61 1/2	62	61 3/4	64	62 1/2	72	75 3/4
		6	80 3/16	81 5/16	83 9/16	85 9/16	88 7/16	100 7/8	106 1/2
		7	8 3/4	9 7/8	11 7/8	14 1/2	16 5/8	18 1/2	20
		8	26 1/2	26 1/2	26 1/2	26 1/2	26 1/2	26 1/2	26 1/2
		9	15 1/2	15 1/2	15 1/2	15 1/2	15 1/2	15 1/2	15 1/2
		10	68 1/4	69 3/8	70 3/8	71 7/8	74 5/16	82 15/16	82 15/16
		11	1 3/8	1 1/2	2 1/16	2 1/2	3 1/16	3 1/8	3 1/4
		12	64	64	64	64	64	75	80
		13	2 1/2	2 1/2	2 1/2	2 1/2	2 1/2	2 1/2	2 1/2
C	INLET PIPE SIZE	2 1/2 FLG.	2 1/2 FLG.	3 FLG.	4 FLG.	4 FLG.	5 FLG.	6 FLG.	
	OUTLET PIPE SIZE	2 1/2 FLG.	2 1/2 FLG.	3 FLG.	4 FLG.	4 FLG.	5 FLG.	6 FLG.	
VALVE SIZE 'A'	ITEM	VALVE SIZE AND OVERALL LOCATION							
1/2"	'B'	12 1/8	12 1/8	12 1/8	12 1/8	12 1/8	12 1/8	12 1/8	
	'C'	16 1/16	16 5/16	17 5/16	19 13/16	21 5/16	23 5/16	25 5/16	
	'D'	75 3/4	76 1/4	78 3/16	91 7/8	93 9/16	93 5/16	95 1/16	
3/4"	'B'	12 9/16	12 9/16	12 9/16	12 9/16	12 9/16	12 9/16	12 9/16	
	'C'	17 1/16	17 5/16	18 5/16	20 13/16	22 5/16	24 5/16	26 5/16	
	'D'	75 3/4	76 1/4	78 3/16	91 7/8	93 9/16	93 5/16	95 1/16	
1"	'B'	13	13	13	13	13	13	13	
	'C'	17 1/16	17 5/16	18 5/16	20 13/16	22 5/16	24 5/16	26 5/16	
	'D'	75 3/4	76 1/4	78 3/16	91 7/8	93 9/16	93 5/16	95 1/16	
1 1/4"	'B'	13 3/4	13 3/4	13 3/4	13 3/4	13 3/4	13 3/4	13 3/4	
	'C'	17 1/16	17 5/16	18 5/16	20 13/16	22 5/16	24 5/16	26 5/16	
	'D'	75 3/4	76 1/4	78 3/16	91 7/8	93 9/16	93 5/16	95 1/16	
1 1/2"	'B'	13 9/16	13 9/16	13 9/16	13 9/16	13 9/16	13 9/16	13 9/16	
	'C'	17 1/16	17 5/16	18 5/16	20 13/16	22 5/16	24 5/16	26 5/16	
	'D'	76 1/2	77	78 15/16	92 5/8	94 5/16	94 1/16	95 13/16	
2"	'B'	14 5/16	14 5/16	14 5/16	14 5/16	14 5/16	14 5/16	14 5/16	
	'C'	18 7/16	18 11/16	19 11/16	22 3/16	23 11/16	25 11/16	27 11/16	
	'D'	78 3/16	78 11/16	80 5/8	94 5/16	96	95 3/4	97 1/2	
2 1/2"	'B'	21	21	21	21	21	21	21	
	'C'	15 3/4	16	17	19 1/2	21	23	25	
	'D'	78 15/16	79 7/16	81 3/8	95 1/16	96 3/4	96 1/2	98 1/4	
3"	'B'		23 13/16	23 13/16	23 13/16	23 13/16	23 13/16	23 13/16	
	'C'	N/A	17	18	20 1/2	22	24	26	
	'D'		81 5/16	83 1/4	96 15/16	98 5/8	98 3/8	100 1/8	
4"	'B'			26 3/16	26 3/16	26 3/16	26 3/16	26 3/16	
	'C'	N/A	N/A	21	23 1/2	25	27	29	
	'D'			85 1/4	98 15/16	100 5/8	100 3/8	102 1/8	
5"	'B'				27 1/4	27 1/4	27 1/4	27 1/4	
	'C'	N/A	N/A	N/A	26 1/4	27 3/4	29 3/4	31 3/4	
	'D'				98 15/16	100 5/8	100 3/8	102 1/8	



ISOMETRIC VIEW

**NOTES:**

- 1/ DIMENSIONS IN INCHES, AND SUBJECT TO CHANGE WITHOUT NOTICE.
- 2/ DIM 'B', 'C', 'D' ARE TO BE APPROXIMATED ONLY, CONSULT FACTORY FOR TIGHT DIMENSIONS.



a nudyne company



**Ace Heaters, LLC**  
www.aceheaters.com

MATERIAL :		TITLE : SIHDW - COVER	
FINISH :		MINIPACK SYSTEM-HORIZONTAL DW	
WEIGHT :		3W WATER- PNEUMATIC OPERATED VALVE PACKAGE-SINGLE UNIT ON DUAL RACK	
UNLESS OTHERWISE SPECIFIED DIMENSIONS ARE IN INCHES		DWG NO.	REV.
TOLERANCE		SIHDWWA-1-DR-3W-DIM	02
DECIMALS	ANGULAR	SCALE : N/A	S/O#
.XX ± .05	± .5		
.XXX ± .010	MAX SURF		SHEET : 2 OF 2

THE INFORMATION CONTAINED WITHIN THIS DRAWING IS PROPRIETARY AND THE SOLE PROPERTY OF ACE HEATERS, LLC. ANY REPRODUCTION IN PART OR AS A WHOLE WITHOUT THE WRITTEN PERMISSION OF ACE HEATERS, LLC IS PROHIBITED.