

8

7

6

5

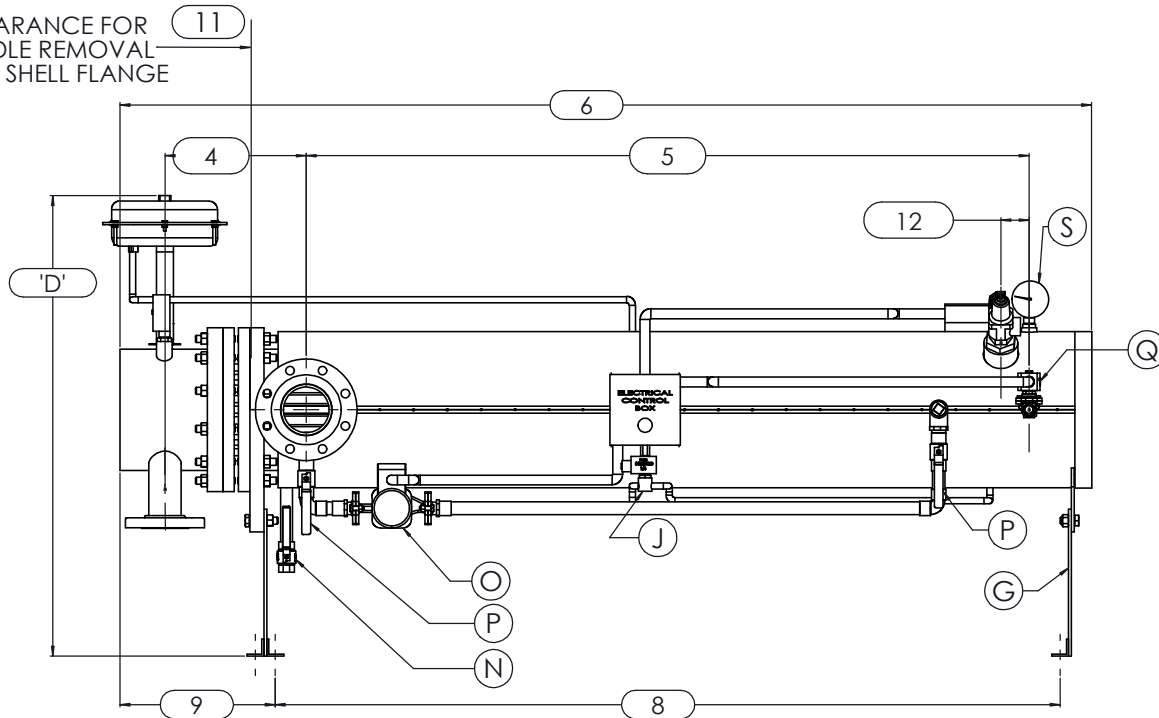
4

3

2

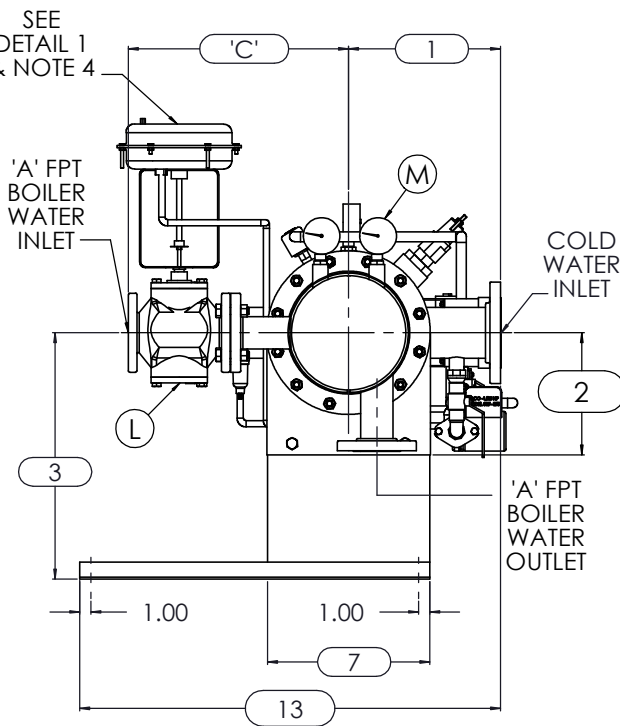
1

CLEARANCE FOR BUNDLE REMOVAL FROM SHELL FLANGE



FRONT VIEW

SEE DETAIL 1 & NOTE 4

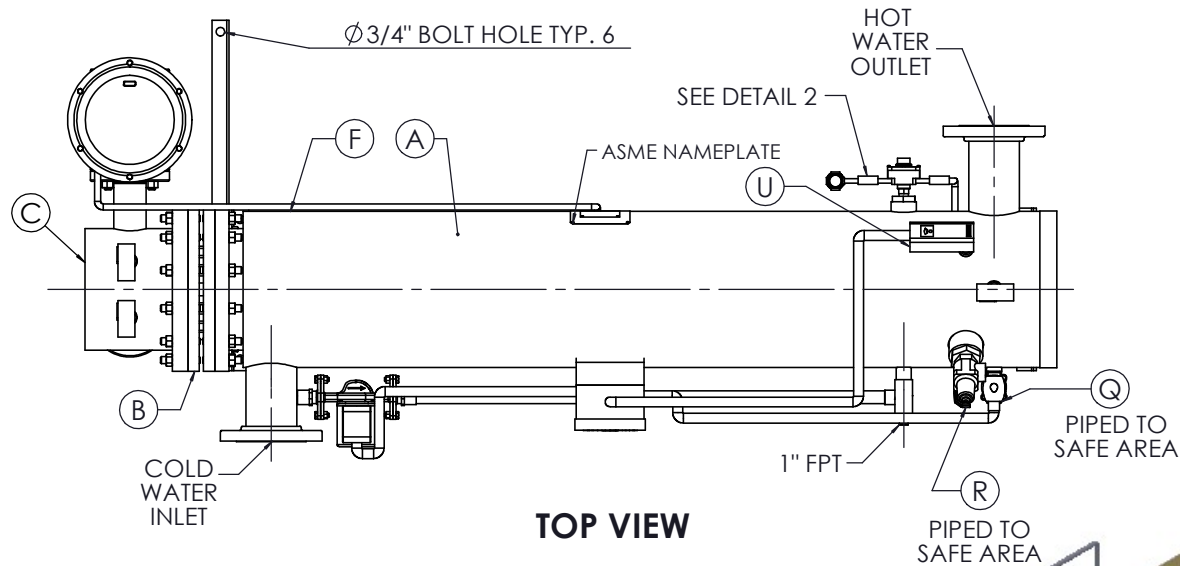
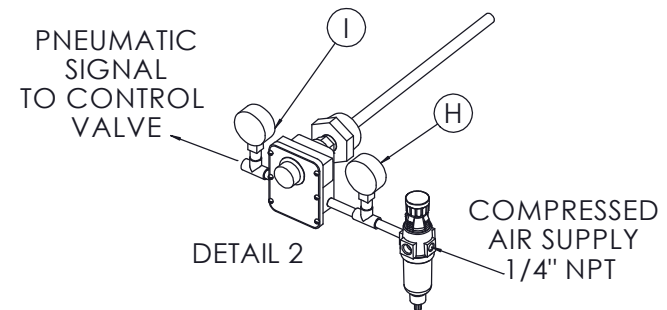


LEFT VIEW

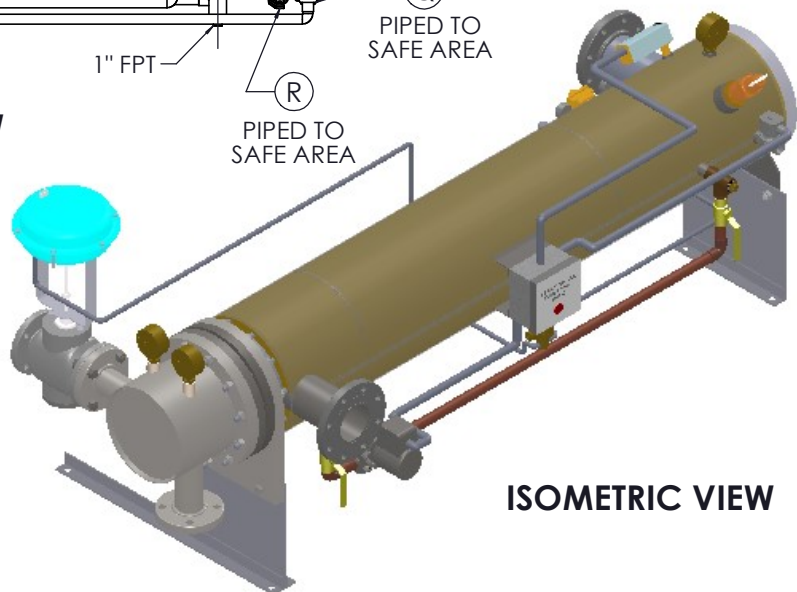
NOTES:

- 1. REFER TO PRODUCT SPECIFICATION FOR DESCRIPTION OF LETTERED ITEMS.
- 2. INSTALLATION: ALL COMPONENTS SHOWN HERE ARE PREWIRED & PREPIPED BY ACE HEATERS, LLC. CUSTOMER WILL ONLY NEED TO PLUMB WATER TO BE HEATED, PIPE STEAM AND CONDENSATE LINES, AND BRING ELECTRICITY TO UNIT.
- 3. DIMENSIONS ARE SUBJECT TO CHANGE. CONSULT FACTORY FOR TIGHT DIMENSIONS.
- 4. THIS CONFIGURATION CHANGES FOR VALVE SIZE 1/2" TO 2". SEE DETAIL 1 FOR REFERENCE.

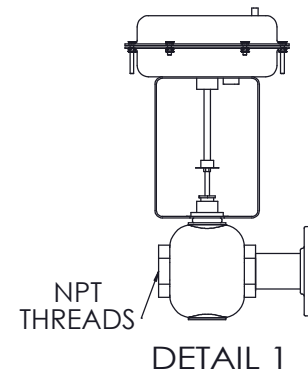
APPROX. EMPTY WT:



TOP VIEW



ISOMETRIC VIEW



DETAIL 1



NB	CERTIFIED BY
	Ace Heaters, LLC www.aceheatingllc.com
ASME	MAXIMUM ALLOWABLE WORKING PRESSURE
	SHELL 150 PSI @ 210 °F
	TUBES 150 PSI @ 370 °F
	MIN. D.M.T. 0 °F @ 150 PSI
U	S/N _____ YEAR BUILT _____
	MODEL _____
	CAPACITY _____ GAL SA. SQFT
	JOB NO. _____ XXX



ASME SECTION VIII DIV 1: DESIGN PRESSURE : (150) psig TEST PRESSURE : (195) psig MAX DESIGN TEMPERATURE : 370 °F	
NAME	DATE
DRAWN K.JIMENEZ	04/12/2023
CRWD	
APPVD	
SEC	
QA	

MATERIAL :	TITLE : SIHDW - COVER	
FINISH :	MINIPACK SYSTEM-HORIZONTAL DW	
WEIGHT :	WATER 2W- PNEUMATIC OPERATED	
	VALVE PACKAGE	
UNLESS OTHERWISE SPECIFIED DIMENSIONS ARE IN INCHES TOLERANCE	DWG NO. SIHDWWA	
DECIMALS .XX ± .05	ANGULAR ± .5	REV. 02
.XXX ± .010	MAX SURF	SCALE : N/A
		S/O#
		SHEET : 1 OF 2

THE INFORMATION CONTAINED WITHIN THIS DRAWING IS PROPRIETARY AND THE SOLE PROPERTY OF ACE HEATERS, LLC. ANY REPRODUCTION IN PART OR AS A WHOLE WITHOUT THE WRITTEN PERMISSION OF ACE HEATERS, LLC IS PROHIBITED.

8

7

6

5

4

3

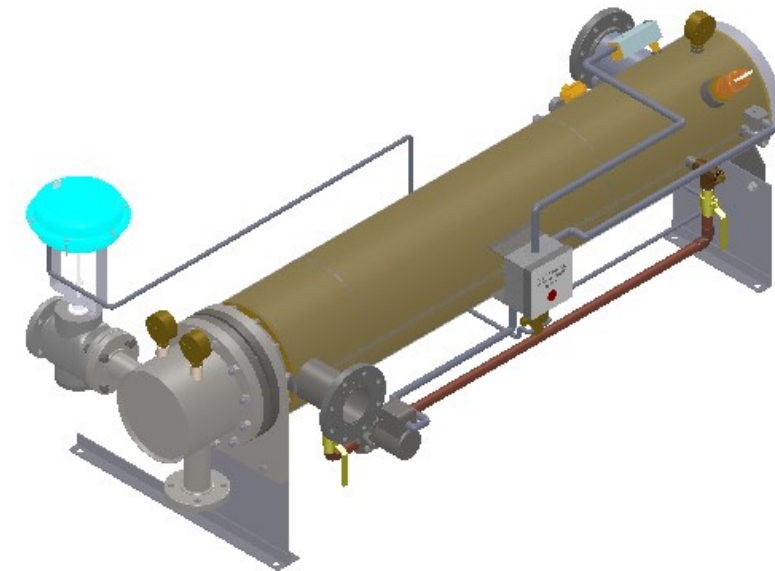
2

1

SIHDWWA-2W, DW - WATER - PNEUMATIC 2-WAY MIXING VALVE PACKAGE

MP SIZE	5	6	8	10	12	14	16	
ITEMS	10	10 1/2	11 1/2	13 1/2	14 1/2	15 1/2	16 1/2	
DIMENSION	2	7 11/16	8 3/16	10 1/8	10 13/16	12 1/2	12 1/4	14
	3	14 7/8	15 3/8	18 5/16	22	26 7/8	26 5/8	28 3/8
	4	10 5/8	11 1/4	12 1/8	13 3/8	15 5/8	17 11/16	18 9/16
	5	61 1/2	62	61 3/4	64	62 1/2	72	75 3/4
	6	80 3/16	81 5/16	83 9/16	85 9/16	88 7/16	100 7/8	106 1/2
	7	8 3/4	9 7/8	11 7/8	14 1/2	16 5/8	18 1/2	20
	8	65 7/8	66 7/8	68	69 1/2	70 11/16	80 5/16	83 7/16
	9	11 3/4	11 3/4	12 5/8	13 3/8	14 3/16	18	19 1/2
	10	1 3/8	1 1/2	2 1/16	2 1/2	3 1/16	3 1/8	3 1/4
	11	64	64	64	64	64	75	80
	12	2 1/2	2 1/2	2 1/2	2 1/2	2 1/2	2 1/2	2 1/2
	13	30 1/8	30 1/16	33 9/16	37 1/4	40 3/16	41 1/4	42 1/2
INLET PIPE SIZE	2 1/2 FLG.	2 1/2 FLG.	3 FLG.	4 FLG.	4 FLG.	5 FLG.	6 FLG.	
OUTLET PIPE SIZE	2 1/2 FLG.	2 1/2 FLG.	3 FLG.	4 FLG.	4 FLG.	5 FLG.	6 FLG.	

VALVE SIZE 'A'	ITEM	VALVE SIZE AND OVERALL LOCATION						
1/2"	'C'	16 1/16	16 5/16	17 5/16	19 13/16	21 5/16	23 5/16	25 5/16
	'D'	30 11/16	31 3/16	34 1/8	37 13/16	42 11/16	42 7/16	44 3/16
3/4"	'C'	17 1/16	17 5/16	18 5/16	20 13/16	22 5/16	24 5/16	26 5/16
	'D'	30 11/16	31 3/16	34 1/8	37 13/16	42 11/16	42 7/16	44 3/16
1"	'C'	17 1/16	17 5/16	18 5/16	20 13/16	22 5/16	24 5/16	26 5/16
	'D'	30 11/16	31 3/16	34 1/8	37 13/16	42 11/16	42 7/16	44 3/16
1 1/4"	'C'	17 1/16	17 5/16	18 5/16	20 13/16	22 5/16	24 5/16	26 5/16
	'D'	30 11/16	31 3/16	34 1/8	37 13/16	42 11/16	42 7/16	44 3/16
1 1/2"	'C'	17 1/16	17 5/16	18 5/16	20 13/16	22 5/16	24 5/16	26 5/16
	'D'	31 7/16	31 15/16	34 7/8	38 9/16	43 7/16	43 3/16	44 15/16
2"	'C'	18 7/16	18 11/16	19 11/16	22 3/16	23 11/16	25 11/16	27 11/16
	'D'	33 1/8	33 5/8	36 9/16	40 1/4	45 1/8	44 7/8	46 5/8
2 1/2"	'C'	15 3/4	16	17	19 1/2	21	23	25
	'D'	33 7/8	34 3/8	37 5/16	41	45 7/8	45 5/8	47 3/8
3"	'C'	N/A	17	18	20 1/2	22	24	26
	'D'	N/A	36 1/4	39 3/16	42 7/8	47 3/4	47 1/2	49 1/4
4"	'C'	N/A	N/A	21	23 1/2	25	27	29
	'D'	N/A	N/A	41 3/16	44 7/8	49 3/4	49 1/2	51 1/4
5"	'C'	N/A	N/A	N/A	26 1/4	27 3/4	29 3/4	31 3/4
	'D'	N/A	N/A	N/A	44 7/8	49 3/4	49 1/2	51 1/4



ISOMETRIC VIEW



a nudyne company

Ace Heaters, LLC
www.aceheaters.com

NOTES:

- 1/ DIMENSIONS IN INCHES, AND SUBJECT TO CHANGE WITHOUT NOTICE.
- 2/ DIM 'C', 'D' ARE TO BE APPROXIMATED ONLY, CONSULT FACTORY FOR TIGHT DIMENSIONS.



ASME SECTION VIII DIV 1 : DESIGN PRESSURE : (150) psig TEST PRESSURE : (195) psig MAX DESIGN TEMPERATURE : 370 °F	
NAME	DATE
DRAWN K.JIMENEZ	04/12/2023
CRD	
APP'D	
QC	
QA	

MATERIAL :	TITLE : SIHDW - COVER MINIPACK SYSTEM-HORIZONTAL DW WATER 2W- PNEUMATIC OPERATED VALVE PACKAGE RACK
FINISH :	
WEIGHT :	
UNLESS OTHERWISE SPECIFIED DIMENSIONS ARE IN INCHES	
DECIMALS XX ± .05	ANGULAR ± .5
.XXX ± .010	MAX SURF
DWG NO. SIHDWWA-DIM	REV. 02
SCALE : N/A	S/O #
SHEET : 2 OF 2	

THE INFORMATION CONTAINED WITHIN THIS DRAWING IS PROPRIETARY AND THE SOLE PROPERTY OF ACE HEATERS, LLC. ANY REPRODUCTION IN PART OR AS A WHOLE WITHOUT THE WRITTEN PERMISSION OF ACE HEATERS, LLC IS PROHIBITED.