

8

7

6

5

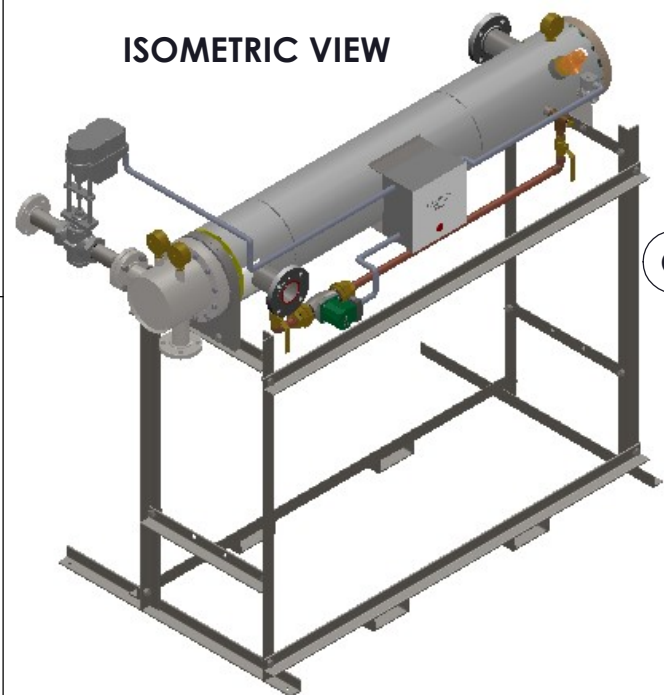
4

3

2

1

### ISOMETRIC VIEW



CLEARANCE FOR BUNDLE REMOVAL FROM SHELL FLANGE

12

4 x  $\phi$  1/2" BOLT HOLE

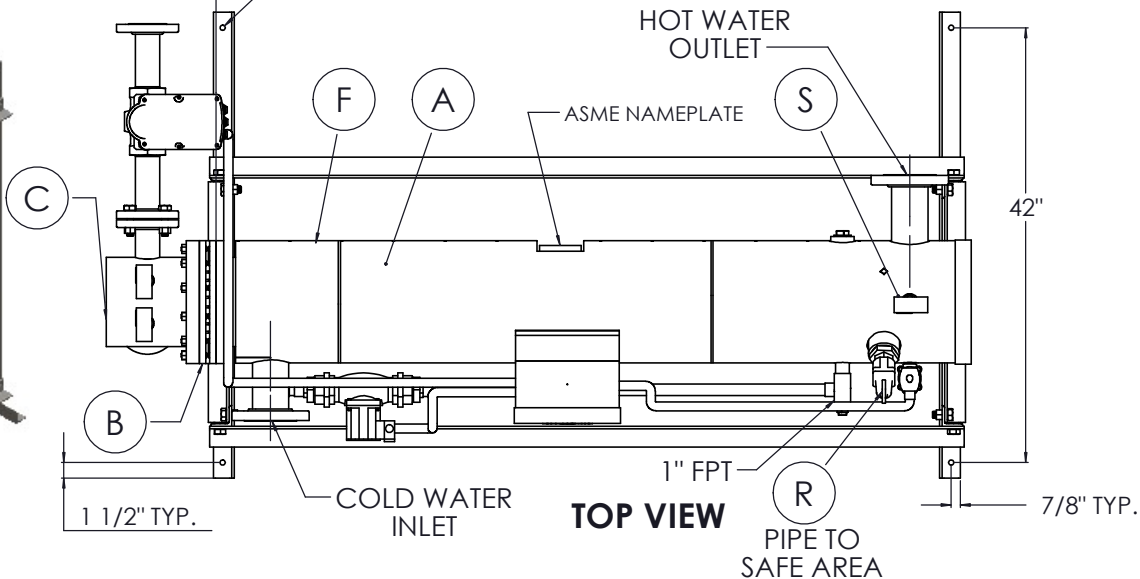
HOT WATER OUTLET

ASME NAMEPLATE

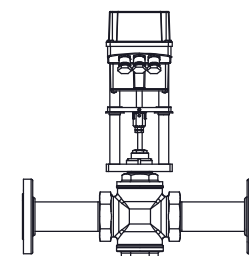
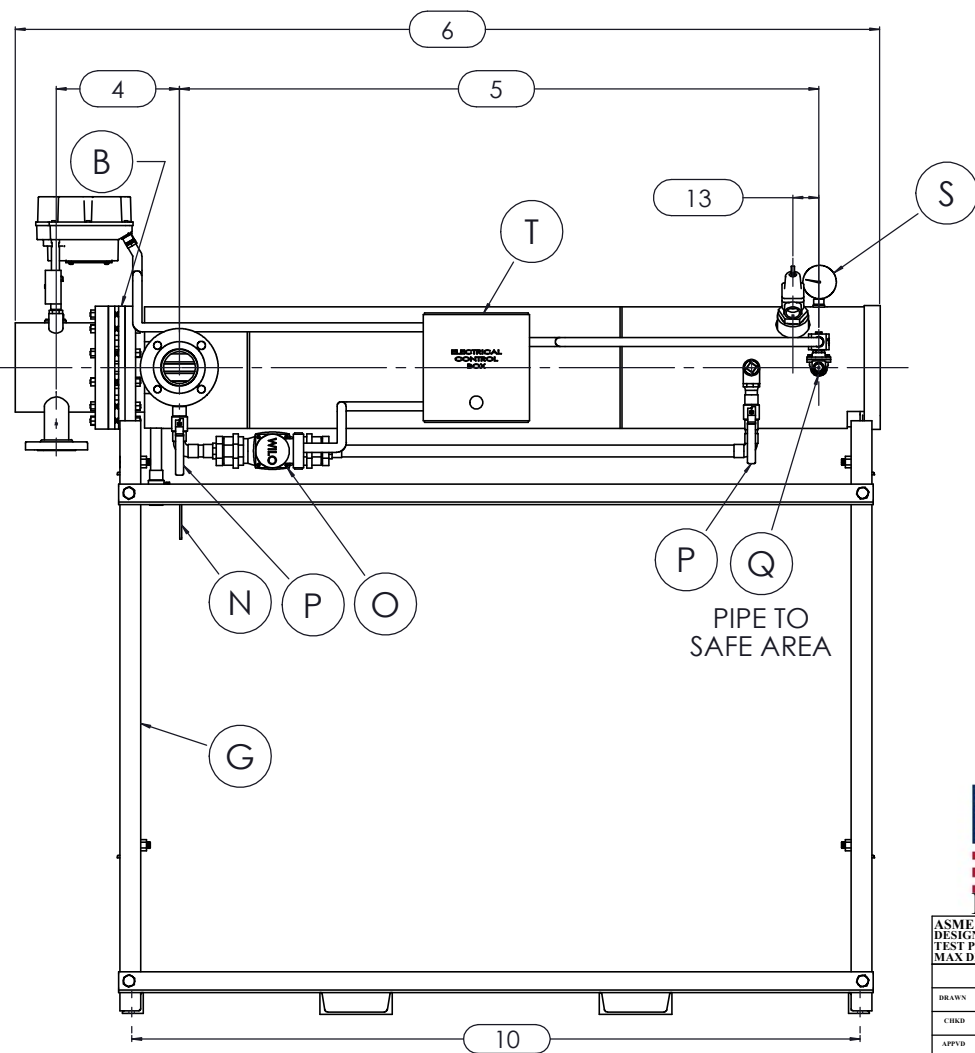
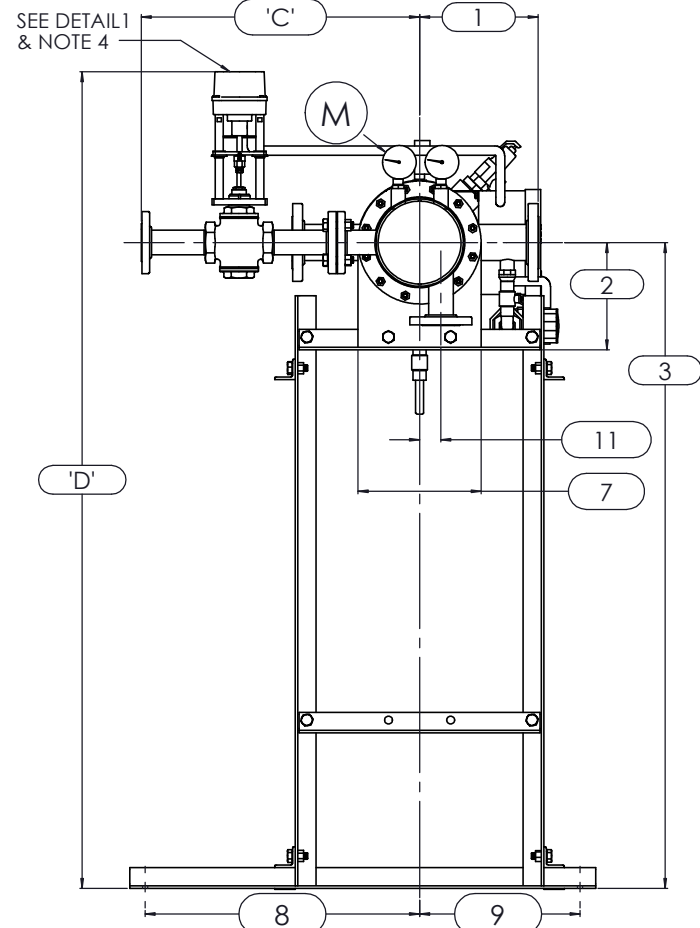
### NOTES:

1. REFER TO PRODUCT SPECIFICATION FOR DESCRIPTION OF LETTERED ITEMS.
2. **INSTALLATION:** ALL COMPONENTS SHOWN HERE ARE PREWIRED & PREPIPED BY ACE HEATERS, LLC. CUSTOMER WILL ONLY NEED TO PLUMB WATER TO BE HEATED, PIPE STEAM AND CONDENSATE LINES, AND BRING ELECTRICITY TO UNIT.
3. DIMENSIONS ARE APPROXIMATED IN INCHES, AND SUBJECT TO CHANGE WITHOUT NOTICE CONSULT FACTORY FOR TIGHT DIMENSIONS.
4. THIS CONFIGURATION HAS THREAD CONNECTION FOR VALVE SIZE 1/2" TO 2". 2.5" TO 4" SIZES HAVE FLANGE CONNECTION.

APPROX. EMPTY WT:



SEE DETAIL 1 & NOTE 4



DETAIL 1



	CERTIFIED BY	
	<b>Ace Heaters, LLC</b>	
	www.aceheatingllc.com	
	MAXIMUM ALLOWABLE WORKING PRESSURE	
	SHELL	150 PSI @ 210 °F
TUBES	150 PSI @ 370 °F	
MIN. D.M.T.	0 °F @ 150 PSI	
S/N	YEAR BUILT	
MODEL	GAL SA. SQFT	
CAPACITY	JOB NO. XXX	



ASME SECTION VIII DIV 1 :	
DESIGN PRESSURE :	(150) psig
TEST PRESSURE :	(195) psig
MAX DESIGN TEMPERATURE :	370 °F
NAME	DATE
DRAWN	K.JIMENEZ 04/12/2023
CHLD	
APPVD	
SEC	
QA	

MATERIAL :	TITLE :	SIHDW - COVER
FINISH :	MINIPACK SYSTEM-HORIZONTAL DW	
WEIGHT :	WATER 2W- ELEC. VALVE PACKAGE- SINGLE UNIT ON DUAL RACK	
UNLESS OTHERWISE SPECIFIED DIMENSIONS ARE IN INCHES		
TOLERANCE		
DECIMALS	ANGULAR	
.XX ± .05	± .5	
.XXX ± .010	MAX SURF	
DWG NO.	REV.	
SIHDWWE-1-DR	02	
SCALE : N/A	S/O #	SHEET : 1 OF 2

THE INFORMATION CONTAINED WITHIN THIS DRAWING IS PROPRIETARY AND THE SOLE PROPERTY OF ACE HEATERS, LLC. ANY REPRODUCTION IN PART OR AS A WHOLE WITHOUT THE WRITTEN PERMISSION OF ACE HEATERS, LLC IS PROHIBITED.

8

7

6

5

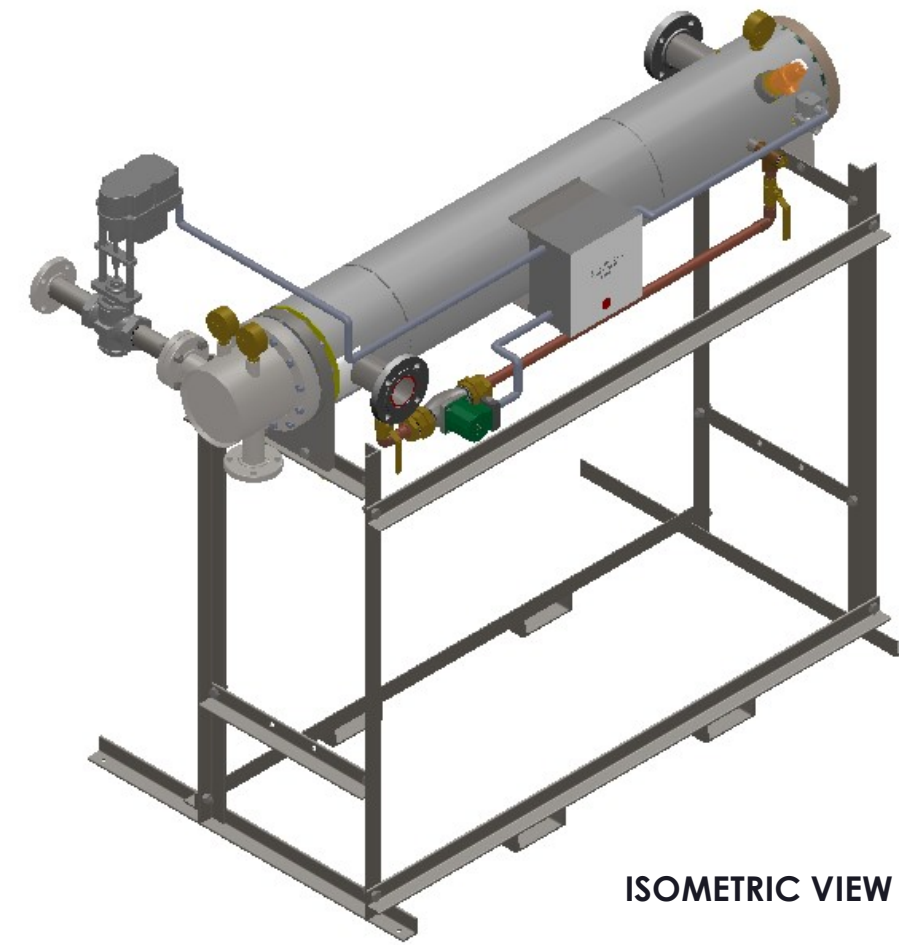
4

3

2

1

		SIHDWWE-1DR - DIM, DW - WATER - ELECTRIC 2-WAY MIXING VALVE PACKAGE, SINGLE UNIT ON RACK								
		MP SIZE	5	6	8	10	12	14	16	
D	ITEMS	1	10	10 1/2	11 1/2	13 1/2	14 1/2	15 1/2	16 1/2	
	DIMENSION	2	7 11/16	8 3/16	10 1/8	10 13/16	12 1/2	12 1/4	14	
		3	59 15/16	60 7/16	62 3/8	76 1/16	77 3/4	77 1/2	79 1/4	
		4	10 5/8	11 1/4	12 1/8	13 3/8	15 5/8	17 11/16	18 9/16	
		5	61 1/2	62	61 3/4	64	62 1/2	72	75 3/4	
		6	80 3/16	81 5/16	83 9/16	85 9/16	88 7/16	100 7/8	106 1/2	
		7	8 3/4	9 7/8	11 7/8	14 1/2	16 5/8	18 1/2	20	
		8	26 1/2	26 1/2	26 1/2	26 1/2	26 1/2	26 1/2	26 1/2	
		9	15 1/2	15 1/2	15 1/2	15 1/2	15 1/2	15 1/2	15 1/2	
		10	68 1/4	69 3/8	70 3/8	71 7/8	74 5/16	82 15/16	82 15/16	
		11	1 3/8	1 1/2	2 1/16	2 1/2	3 1/16	3 1/8	3 1/4	
		12	64	64	64	64	64	75	80	
		13	2 1/2	2 1/2	2 1/2	2 1/2	2 1/2	2 1/2	2 1/2	
INLET PIPE SIZE		2 1/2	2 1/2	3 FLG.	4 FLG.	4 FLG.	5 FLG.	6 FLG.		
OUTLET PIPE SIZE		2 1/2	2 1/2	3 FLG.	4 FLG.	4 FLG.	5 FLG.	6 FLG.		
VALVE SIZE 'A'	ITEM	VALVE SIZE AND OVERALL LOCATION								
1/2"	'C'	17 5/8	17 7/8	18 7/8	21 3/8	22 7/8	24 7/8	26 7/8		
	'D'	75 11/16	76 3/16	78 1/8	91 13/16	93 1/2	93 1/4	95		
3/4"	'C'	17 5/8	17 7/8	18 7/8	21 3/8	22 7/8	24 7/8	26 7/8		
	'D'	75 11/16	76 3/16	78 1/8	91 13/16	93 1/2	93 1/4	95		
1"	'C'	17 5/8	17 7/8	18 7/8	21 3/8	22 7/8	24 7/8	26 7/8		
	'D'	75 11/16	76 3/16	78 1/8	91 13/16	93 1/2	93 1/4	95		
1 1/4"	'C'	18 1/2	18 3/4	19 3/4	22 1/4	23 3/4	25 3/4	27 3/4		
	'D'	76 5/16	76 13/16	78 3/4	92 7/16	94 1/8	93 7/8	95 5/8		
1 1/2"	'C'	18 1/2	18 3/4	19 3/4	22 1/4	23 3/4	25 3/4	27 3/4		
	'D'	76 5/16	76 13/16	78 3/4	92 7/16	94 1/8	93 7/8	95 5/8		
2"	'C'	19 1/4	19 1/2	20 1/2	23	24 1/2	26 1/2	28 1/2		
	'D'	76 9/16	77 1/16	79	92 11/16	94 3/8	94 1/8	95 7/8		
2 1/2"	'C'	15 3/4	16	17	19 1/2	21	23	25		
	'D'	78 15/16	79 7/16	81 3/8	95 1/16	96 3/4	96 1/2	98 1/4		
3"	'C'	N/A	17	18	20 1/2	22	24	26		
	'D'	N/A	80 1/16	82	95 11/16	97 3/8	97 1/8	98 7/8		
4"	'C'	N/A	N/A	21	23 1/2	25	27	29		
	'D'	N/A	N/A	83 1/8	96 13/16	98 1/2	98 1/4	100		
5"	'C'	N/A	N/A	N/A	26 1/4	27 3/4	29 3/4	31 3/4		
	'D'	N/A	N/A	N/A	97 5/16	99	98 3/4	100 1/2		



ISOMETRIC VIEW

**NOTES:**

- 1/ DIMENSIONS IN INCHES, AND SUBJECT TO CHANGE WITHOUT NOTICE.
- 2/ DIM 'B', 'C', 'D' ARE TO BE APPROXIMATED ONLY, CONSULT FACTORY FOR TIGHT DIMENSIONS.



a nudyne company



**Ace Heaters, LLC**  
www.aceheaters.com

<small>ASME SECTION VIII DIV 1 : DESIGN PRESSURE : (150) psig TEST PRESSURE : (195) psig MAX DESIGN TEMPERATURE : 370 °F</small>		MATERIAL :	TITLE :
<small>DRAWN : K.JIMENEZ    DATE : 04/12/2023</small>	<small>FINISH :</small>	<small>WEIGHT :</small>	SIHDW - COVER MINIPACK SYSTEM-HORIZONTAL DW
<small>UNLESS OTHERWISE SPECIFIED DIMENSIONS ARE IN INCHES</small>	<small>DECIMALS    ANGULAR</small> XX ± .05    ± .5 XXX ± .010    MAX SURF	DWG NO. : SIHDWWE-1-DR-DIM	REV. : 02
<small>SCALE : N/A</small>	<small>S/O #</small>	<small>SHEET : 2 OF 2</small>	

THE INFORMATION CONTAINED WITHIN THIS DRAWING IS PROPRIETARY AND THE SOLE PROPERTY OF ACE HEATERS, LLC. ANY REPRODUCTION IN PART OR AS A WHOLE WITHOUT THE WRITTEN PERMISSION OF ACE HEATERS, LLC IS PROHIBITED.