

8

7

6

5

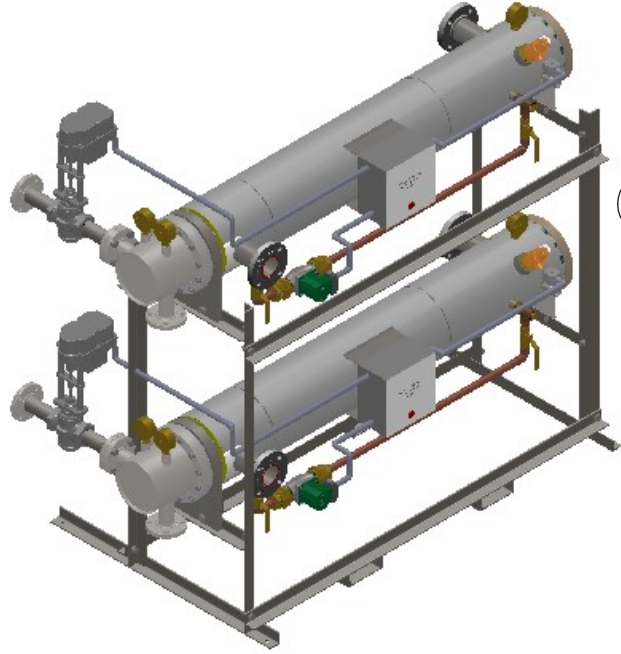
4

3

2

1

ISOMETRIC VIEW



CLEARANCE FOR BUNDLE REMOVAL FROM SHELL FLANGE

12

4 x Ø 1/2" BOLT HOLE

HOT WATER OUTLET

ASME NAMEPLATE

42"

1 1/2" TYP.

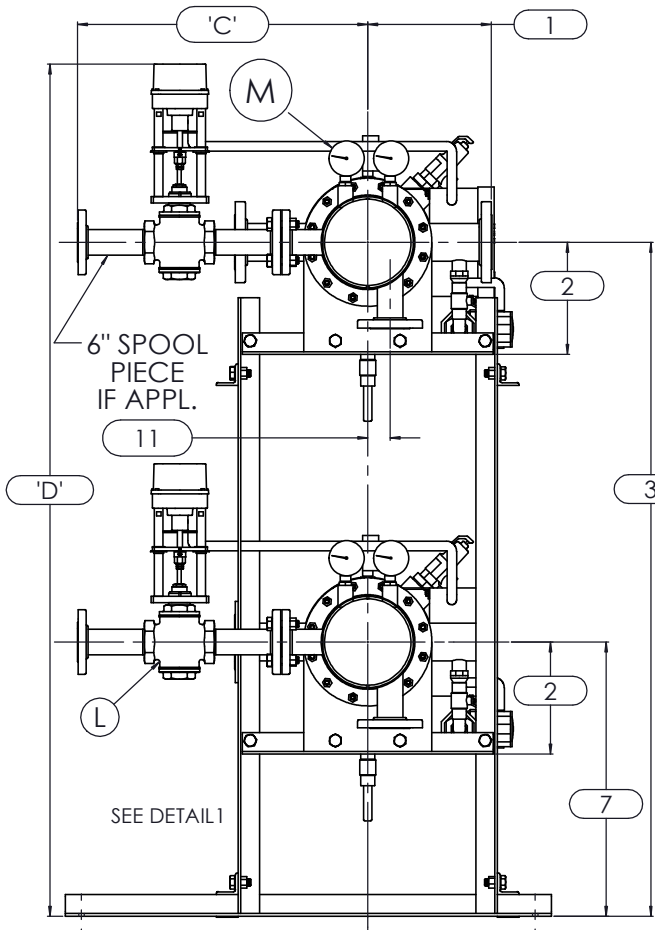
COLD WATER INLET

1" FPT

7/8" TYP.

TOP VIEW

R
PIPE TO SAFE AREA

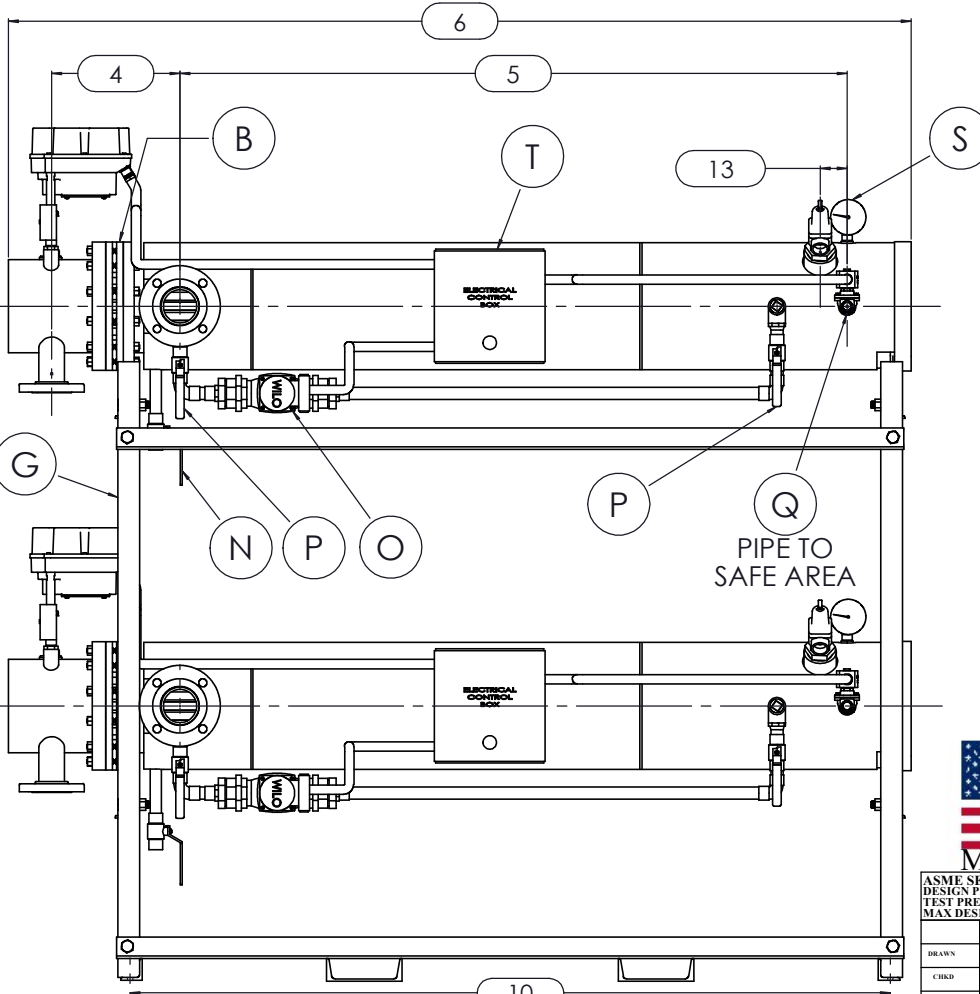


6" SPOOL PIECE IF APPL.

L

SEE DETAIL 1

LEFT VIEW



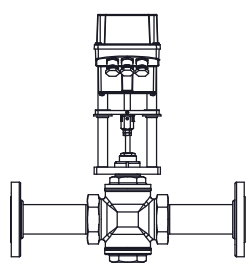
P
PIPE TO SAFE AREA

FRONT VIEW

NOTES:

1. REFER TO PRODUCT SPECIFICATION FOR DESCRIPTION OF LETTERED ITEMS.
2. **INSTALLATION:** ALL COMPONENTS SHOWN HERE ARE PREWIRED & PREPIPED BY ACE HEATERS, LLC. CUSTOMER WILL ONLY NEED TO PLUMB WATER TO BE HEATED, PIPE STEAM AND CONDENSATE LINES, AND BRING ELECTRICITY TO UNIT.
3. DIMENSIONS ARE APPROXIMATED IN INCHES, AND SUBJECT TO CHANGE WITHOUT NOTICE CONSULT FACTORY FOR TIGHT DIMENSIONS.
4. THIS CONFIGURATION HAS THREAD CONNECTION FOR VALVE SIZE 1/2" TO 2". 2.5" TO 4" SIZES HAVE FLANGE CONNECTION.

APPROX. EMPTY WT:



DETAIL 1



	CERTIFIED BY	
	Ace Heaters, LLC	
	www.aceheatingllc.com	
	MAXIMUM ALLOWABLE WORKING PRESSURE	
	SHELL	150 PSI @ 210 °F
TUBES	150 PSI @ 370 °F	
MIN. D.M.T. 0 °F @ 150 PSI		
S/N _____ YEAR BUILT _____		
MODEL _____		
CAPACITY _____ GAL SA. SQFT		
JOB NO. _____ XXX		



ASME SECTION VIII DIV 1 :	
DESIGN PRESSURE : (150) psig	
TEST PRESSURE : (195) psig	
MAX DESIGN TEMPERATURE : 370 °F	
NAME	DATE
DRAWN K.JIMENEZ	04/12/2023
CHDL	
APPVD	
SEC	
QA	

Ace Heaters, LLC		www.aceheaters.com	
MATERIAL :	TITLE :	SIHDW - COVER	
FINISH :	MINIPACK SYSTEM-HORIZONTAL DW		
WEIGHT :	WATER 2W- ELEC. VALVE PACKAGE-DUAL UNIT ON DUAL RACK		
UNLESS OTHERWISE SPECIFIED DIMENSIONS ARE IN INCHES		DWG NO.	REV.
TOLERANCE		SIHDWWE-2-DR	02
DECIMALS	ANGULAR	SCALE : N/A S/O # SHEET : 1 OF 2	
.XX ± .05	± 5		
.XXX ± .010	MAX SURF		

THE INFORMATION CONTAINED WITHIN THIS DRAWING IS PROPRIETARY AND THE SOLE PROPERTY OF ACE HEATERS, LLC. ANY REPRODUCTION IN PART OR AS A WHOLE WITHOUT THE WRITTEN PERMISSION OF ACE HEATERS, LLC IS PROHIBITED.

8

7

6

5

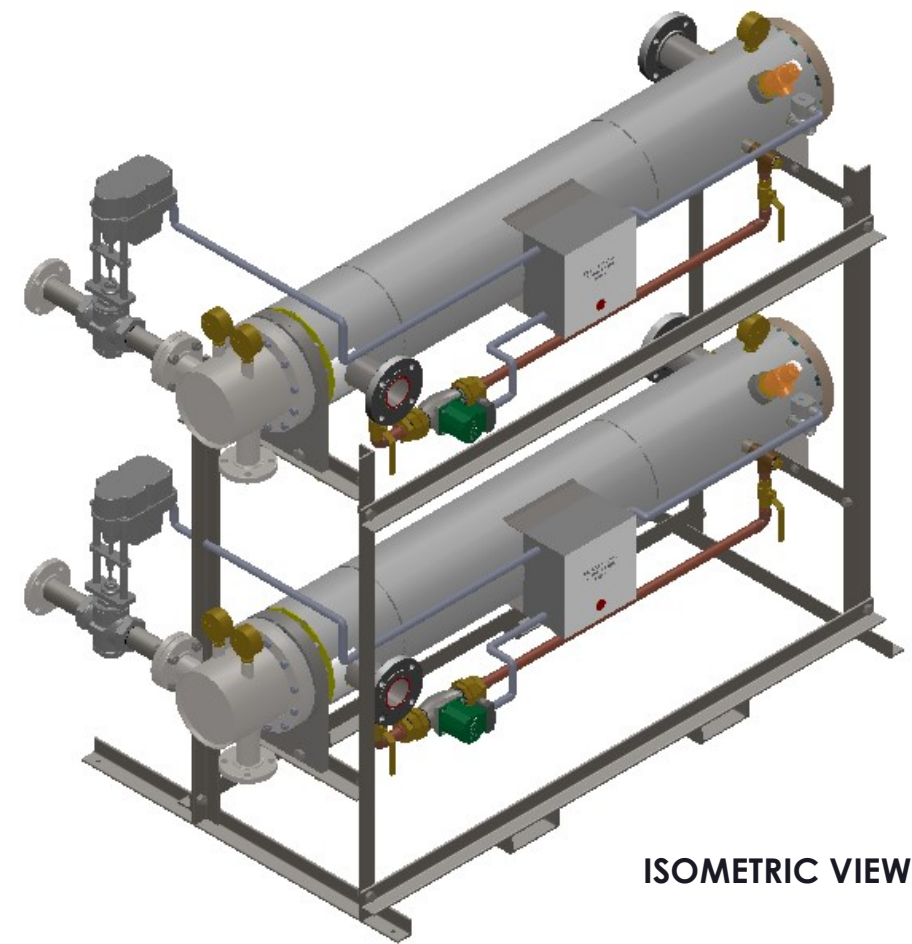
4

3

2

1

		SIHDWWE- 2-DR - DIM, DW - WATER ELECTRIC 2-WAY MIXING VALVE PACKAGE, DUAL UNIT ON RACK								
		MP SIZE	5	6	8	10	12	14	16	
D	ITEMS	1	10	10 1/2	11 1/2	13 1/2	14 1/2	15 1/2	16 1/2	
	DIMENSION	2	7 11/16	8 3/16	10 1/8	10 13/16	12 1/2	12 1/4	14	
		3	59 15/16	60 7/16	62 3/8	76 1/16	77 3/4	77 1/2	79 1/4	
		4	10 5/8	11 1/4	12 1/8	13 3/8	15 5/8	17 11/16	18 9/16	
		5	61 1/2	62	61 3/4	64	62 1/2	72	75 3/4	
		6	80 3/16	81 5/16	83 9/16	85 9/16	88 7/16	100 7/8	106 1/2	
		7	22 15/16	23 7/16	25 3/8	26 3/16	27 7/8	27 5/8	29 3/8	
		8	26 1/2	26 1/2	26 1/2	26 1/2	26 1/2	26 1/2	26 1/2	
		9	15 1/2	15 1/2	15 1/2	15 1/2	15 1/2	15 1/2	15 1/2	
		10	68 1/4	69 3/8	70 3/8	71 7/8	74 5/16	82 15/16	82 15/16	
		11	1 3/8	1 1/2	2 1/16	2 1/2	3 1/16	3 1/8	3 1/4	
		12	64	64	64	64	64	75	80	
		13	2 1/2	2 1/2	2 1/2	2 1/2	2 1/2	2 1/2	2 1/2	
INLET PIPE SIZE		2 1/2 FLG.	2 1/2 FLG.	3 FLG.	4 FLG.	4 FLG.	5 FLG.	6 FLG.		
OUTLET PIPE SIZE		2 1/2 FLG.	2 1/2 FLG.	3 FLG.	4 FLG.	4 FLG.	5 FLG.	6 FLG.		
VALVE SIZE 'A'	ITEM	VALVE SIZE AND OVERALL LOCATION								
1/2"	'C'	17 5/8	17 7/8	18 7/8	21 3/8	22 7/8	24 7/8	26 7/8		
	'D'	75 11/16	76 3/16	78 1/8	91 13/16	93 1/2	93 1/4	95		
3/4"	'C'	17 5/8	17 7/8	18 7/8	21 3/8	22 7/8	24 7/8	26 7/8		
	'D'	75 11/16	76 3/16	78 1/8	91 13/16	93 1/2	93 1/4	95		
1"	'C'	17 5/8	17 7/8	18 7/8	21 3/8	22 7/8	24 7/8	26 7/8		
	'D'	75 11/16	76 3/16	78 1/8	91 13/16	93 1/2	93 1/4	95		
1 1/4"	'C'	18 1/2	18 3/4	19 3/4	22 1/4	23 3/4	25 3/4	27 3/4		
	'D'	76 5/16	76 13/16	78 3/4	92 7/16	94 1/8	93 7/8	95 5/8		
1 1/2"	'C'	18 1/2	18 3/4	19 3/4	22 1/4	23 3/4	25 3/4	27 3/4		
	'D'	76 5/16	76 13/16	78 3/4	92 7/16	94 1/8	93 7/8	95 5/8		
2"	'C'	19 1/4	19 1/2	20 1/2	23	24 1/2	26 1/2	28 1/2		
	'D'	76 9/16	77 1/16	79	92 11/16	94 3/8	94 1/8	95 7/8		
2 1/2"	'C'	15 3/4	16	17	19 1/2	21	23	25		
	'D'	78 15/16	79 7/16	81 3/8	95 1/16	96 3/4	96 1/2	98 1/4		
3"	'C'	N/A	17	18	20 1/2	22	24	26		
	'D'	N/A	80 1/16	82	95 11/16	97 3/8	97 1/8	98 7/8		
4"	'C'	N/A	N/A	21	23 1/2	25	27	29		
	'D'	N/A	N/A	83 1/8	96 13/16	98 1/2	98 1/4	100		
5"	'C'	N/A	N/A	N/A	26 1/4	27 3/4	29 3/4	31 3/4		
	'D'	N/A	N/A	N/A	97 5/16	99	98 3/4	100 1/2		



ISOMETRIC VIEW

NOTES:


- 1/ DIMENSIONS IN INCHES, AND SUBJECT TO CHANGE WITHOUT NOTICE.
- 2/ DIM 'C', 'D' ARE TO BE APPROXIMATED ONLY, CONSULT FACTORY FOR TIGHT DIMENSIONS.



a nudyne company



ASME SECTION VIII DIV 1 : DESIGN PRESSURE : (150) psig TEST PRESSURE : (195) psig MAX DESIGN TEMPERATURE : 370 °F	
NAME	DATE
K.JIMENEZ	04/12/2023
DRWN	
CHLD	
APPD	
SEC	
QA	

 <p>MADE IN USA</p>		<p>Ace Heaters, LLC www.aceheaters.com</p>
MATERIAL :	TITLE : SIHDW - COVER	
FINISH :	MINIPACK SYSTEM-HORIZONTAL DW	
WEIGHT :	WATER 2W- ELEC. VALVE PACKAGE-DUAL UNIT ON DUAL RACK	
UNLESS OTHERWISE SPECIFIED DIMENSIONS ARE IN INCHES		DWG NO. SIHDWWE-2-DR-DIM
TOLERANCE		REV. 02
DECIMALS .XX ± .05	ANGULAR ± .5	SCALE : N/A
.XXX ± .010	MAX SURF	S/O#
		SHEET : 2 OF 2

THE INFORMATION CONTAINED WITHIN THIS DRAWING IS PROPRIETARY AND THE SOLE PROPERTY OF ACE HEATERS, LLC. ANY REPRODUCTION IN PART OR AS A WHOLE WITHOUT THE WRITTEN PERMISSION OF ACE HEATERS, LLC IS PROHIBITED.