

8

7

6

5

4

3

2

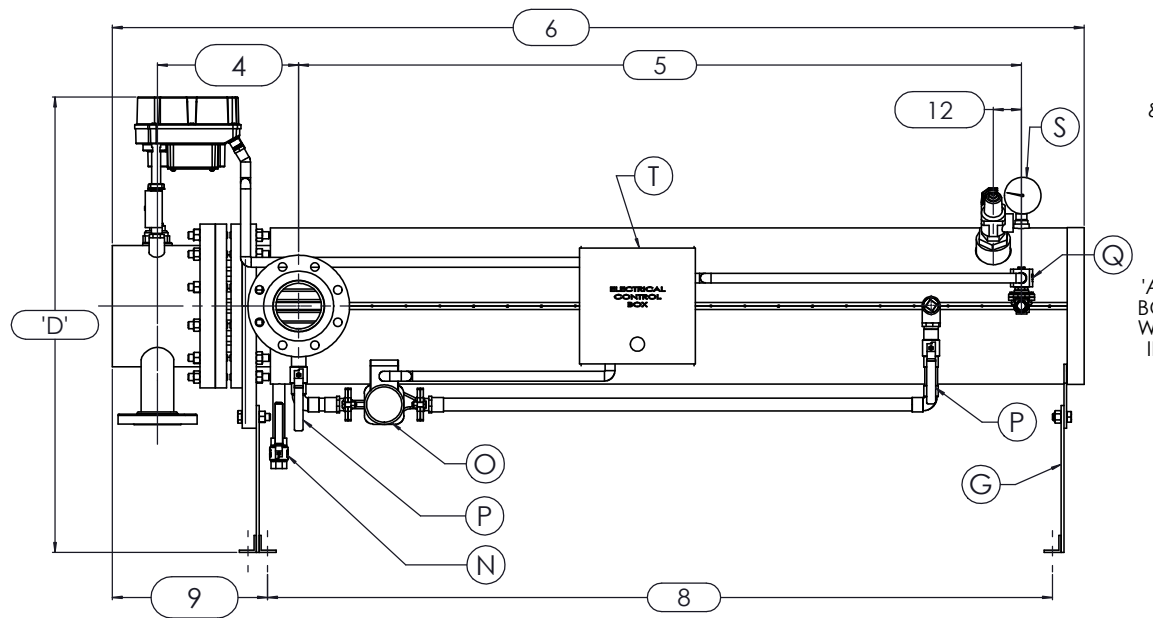
1

D

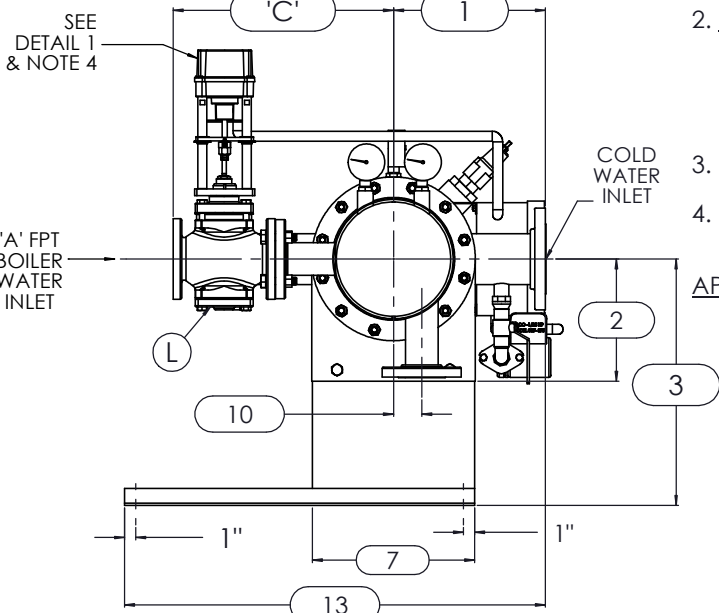
C

B

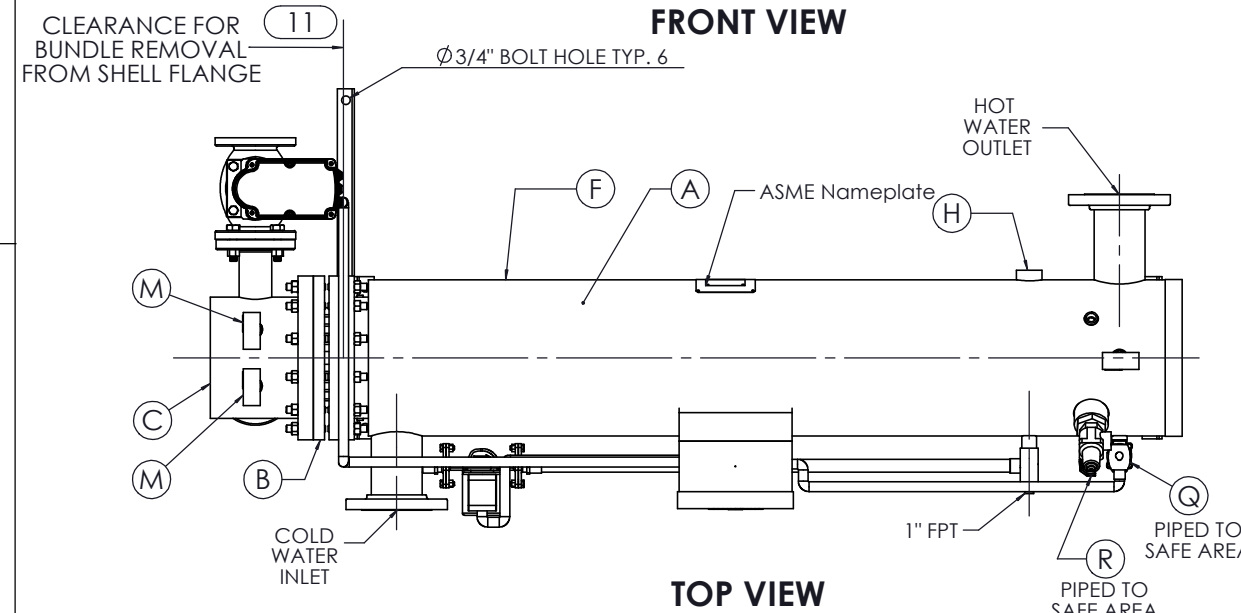
A



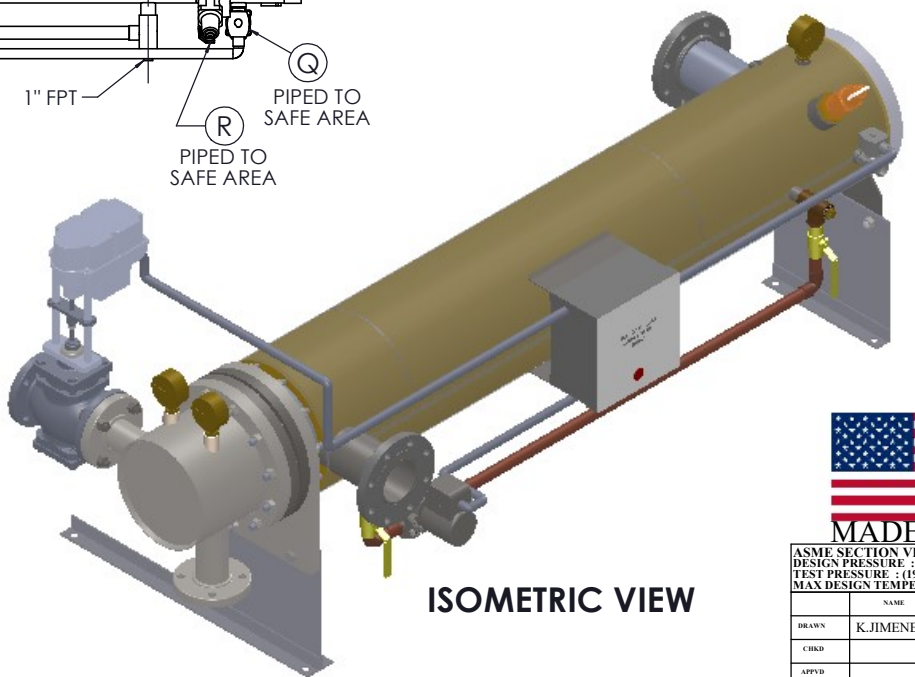
**FRONT VIEW**



**LEFT VIEW**



**TOP VIEW**



**ISOMETRIC VIEW**

**NOTES:**

1. REFER TO PRODUCT SPECIFICATION FOR DESCRIPTION OF LETTERED ITEMS.
2. **INSTALLATION:**  
ALL COMPONENTS SHOWN HERE ARE PREWIRED & PREPIPED BY ACE HEATERS, LLC. CUSTOMER WILL ONLY NEED TO PLUMB WATER TO BE HEATED, PIPE STEAM AND CONDENSATE LINES, AND BRING ELECTRICITY TO UNIT.
3. DIMENSIONS ARE SUBJECT TO CHANGE. CONSULT FACTORY FOR TIGHT DIMENSIONS.
4. THIS CONFIGURATION CHANGES FOR VALVE SIZE 1/2" TO 2". SEE DETAIL 1 FOR REFERENCE.

APPROX. EMPTY WT:



	CERTIFIED BY <b>Ace Heaters, LLC</b> www.aceheatingllc.com
	MAXIMUM ALLOWABLE WORKING PRESSURE
	SHELL 150 PSI @ 210 °F
	TUBES 150 PSI @ 370 °F
	MIN. D.M.T. 0 °F @ 150 PSI
S/N _____ YEAR BUILT _____	
MODEL _____	
CAPACITY _____ GAL SA. SQFT	
JOB NO. _____ XXX	



ASME SECTION VIII DIV 1: DESIGN PRESSURE : (150) psig TEST PRESSURE : (195) psig MAX DESIGN TEMPERATURE : 370 °F	
NAME	DATE
DRAWN K.JIMENEZ	04/12/2023
CRKD	
APPVD	
SEC	
QA	

**Ace Heaters, LLC**  
www.aceheaters.com

MATERIAL :	TITLE : SIHDW - COVER
FINISH :	MINIPACK SYSTEM-HORIZONTAL DW
WEIGHT :	WATER 2W- ELEC. VALVE PACKAGE
UNLESS OTHERWISE SPECIFIED DIMENSIONS ARE IN INCHES TOLERANCE	DWG NO. SIHDWWE-2W
DECIMALS .XX ± .05	ANGULAR ± .5
.XXX ± .010	MAX SURF
SCALE : N/A	S/O #
	REV. 02
	SHEET : 1 OF 2

THE INFORMATION CONTAINED WITHIN THIS DRAWING IS PROPRIETARY AND THE SOLE PROPERTY OF ACE HEATERS, LLC. ANY REPRODUCTION IN PART OR AS A WHOLE WITHOUT THE WRITTEN PERMISSION OF ACE HEATERS, LLC IS PROHIBITED.

8

7

6

5

4

3

2

1

8

7

6

5

4

3

2

1

# SIHDWWE-2W, DW - WATER ELECTRIC 2-WAY MIXING VALVE PACKAGE

MP SIZE	5	6	8	10	12	14	16
---------	---	---	---	----	----	----	----

DIMENSION

D

ITEMS	1	10	10 1/2	11 1/2	13 1/2	14 1/2	15 1/2	16 1/2
2	7 11/16	8 3/16	10 1/8	10 13/16	12 1/2	12 1/4	14	
3	14 7/8	15 3/8	18 5/16	22	26 7/8	26 5/8	28 3/8	
4	10 5/8	11 1/4	12 1/8	13 3/8	15 5/8	17 11/16	18 9/16	
5	61 1/2	62	61 3/4	64	62 1/2	72	75 3/4	
6	80 3/16	81 5/16	83 9/16	85 9/16	88 7/16	100 7/8	106 1/2	
7	8 3/4	9 7/8	11 7/8	14 1/2	16 5/8	18 1/2	20	
8	65 7/8	66 7/8	68	69 1/2	70 11/16	80 5/16	83 7/16	
9	11 3/4	11 3/4	12 5/8	13 3/8	14 3/16	18	19 1/2	
10	1 3/8	1 1/2	2 1/16	2 1/2	3 1/16	3 1/8	3 1/4	
11	64	64	64	64	64	75	80	
12	2 1/2	2 1/2	2 1/2	2 1/2	2 1/2	2 1/2	2 1/2	
13	30 1/8	30 1/16	33 9/16	37 1/4	40 3/16	41 1/4	42 1/2	

INLET PIPE SIZE	2 1/2 FLG.	2 1/2 FLG.	3 FLG.	4 FLG.	4 FLG.	5 FLG.	6 FLG.
OUTLET PIPE SIZE	2 1/2 FLG.	2 1/2 FLG.	3 FLG.	4 FLG.	4 FLG.	5 FLG.	6 FLG.

C

VALVE SIZE 'A'	ITEM	VALVE SIZE AND OVERALL LOCATION						
1/2"	'C'	14 5/8	14 7/8	15 7/8	18 3/8	19 7/8	21 7/8	23 7/8
	'D'	30 5/8	31 1/8	34 1/16	37 3/4	42 5/8	42 3/8	44 1/8
3/4"	'C'	14 5/8	14 7/8	15 7/8	18 3/8	19 7/8	21 7/8	23 7/8
	'D'	30 5/8	31 1/8	34 1/16	37 3/4	42 5/8	42 3/8	44 1/8
1"	'C'	14 5/8	14 7/8	15 7/8	18 3/8	19 7/8	21 7/8	23 7/8
	'D'	30 5/8	31 1/8	34 1/16	37 3/4	42 5/8	42 3/8	44 1/8
1 1/4"	'C'	15 1/2	15 3/4	16 3/4	19 1/4	20 3/4	22 3/4	24 3/4
	'D'	31 1/4	31 3/4	34 11/16	38 3/8	43 1/4	43	44 3/4
1 1/2"	'C'	15 1/2	15 3/4	16 3/4	19 1/4	20 3/4	22 3/4	24 3/4
	'D'	31 1/4	31 3/4	34 11/16	38 3/8	43 1/4	43	44 3/4
2"	'C'	16 1/4	16 1/2	17 1/2	20	21 1/2	23 1/2	25 1/2
	'D'	31 1/2	32	34 15/16	38 5/8	43 1/2	43 1/4	45
2 1/2"	'C'	15 3/4	16	17	19 1/2	21	23	25
	'D'	33 7/8	34 3/8	37 5/16	41	45 7/8	45 5/8	47 3/8
3"	'C'	N/A	17	18	20 1/2	22	24	26
	'D'	N/A	35	37 15/16	41 5/8	46 1/2	46 1/4	48
4"	'C'	N/A	N/A	21	23 1/2	25	27	29
	'D'	N/A	N/A	39 1/16	42 3/4	47 5/8	47 3/8	49 1/8
5"	'C'	N/A	N/A	N/A	26 1/4	27 3/4	29 3/4	31 3/4
	'D'	N/A	N/A	N/A	43 1/4	48 1/8	47 7/8	49 5/8

B

A

### NOTES:

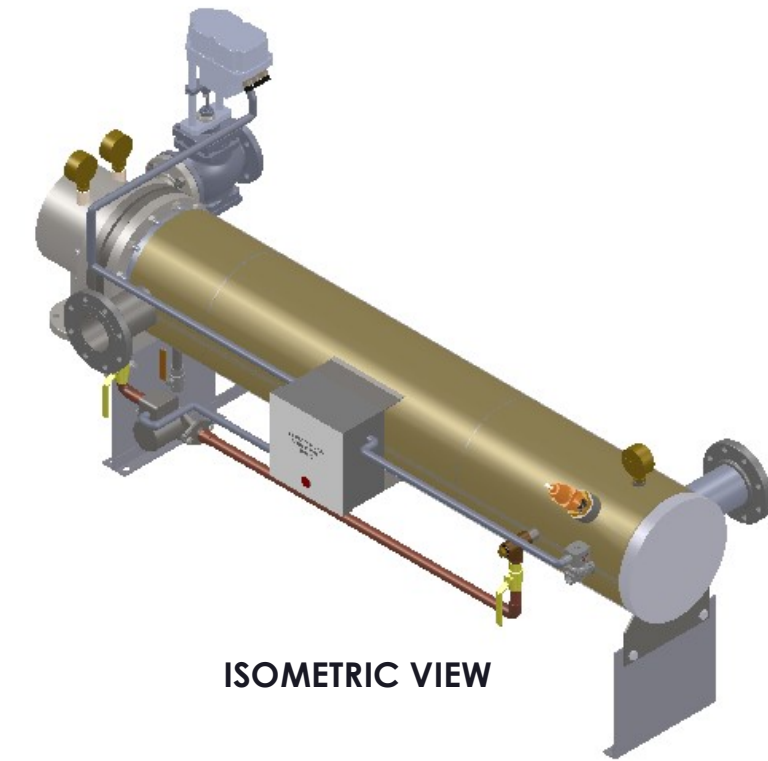
- 1/ DIMENSIONS IN INCHES, AND SUBJECT TO CHANGE WITHOUT NOTICE.
- 2/ DIM 'C', 'D' ARE TO BE APPROXIMATED ONLY, CONSULT FACTORY FOR TIGHT DIMENSIONS.

D

C

B

A



ISOMETRIC VIEW



a nudyne company



ASME SECTION VIII DIV 1 : DESIGN PRESSURE : (150) psig TEST PRESSURE : (195) psig MAX DESIGN TEMPERATURE : 370 °F	
NAME	DATE
DRAWN K.JIMENEZ	04/12/2023
CREED	
APP'D	
SEC	
QA	

MATERIAL :	TITLE : SIHDW - COVER
FINISH :	MINIPACK SYSTEM-HORIZONTAL DW
WEIGHT :	WATER 2W- ELEC. VALVE PACKAGE
UNLESS OTHERWISE SPECIFIED DIMENSIONS ARE IN INCHES	
DECIMALS	TOLERANCE
XX ± .05	ANGULAR ± .5
.XXX ± .010	MAX SURF
DWG NO. SIHDWWE-2W-DIM	REV. 02
SCALE : N/A	S/O #
SHEET : 2 OF 2	

THE INFORMATION CONTAINED WITHIN THIS DRAWING IS PROPRIETARY AND THE SOLE PROPERTY OF ACE HEATERS, LLC. ANY REPRODUCTION IN PART OR AS A WHOLE WITHOUT THE WRITTEN PERMISSION OF ACE HEATERS, LLC IS PROHIBITED.

8

7

6

5

4

3

2

1