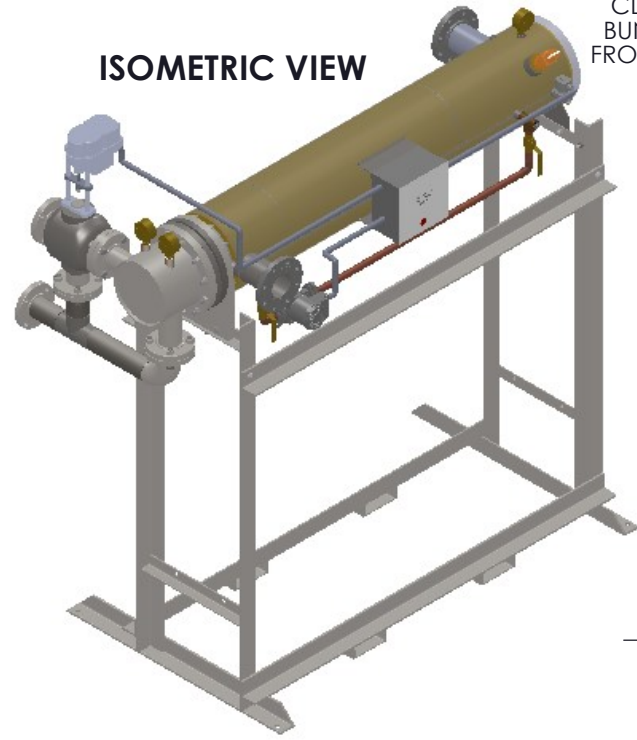


**ISOMETRIC VIEW**



CLEARANCE FOR BUNDLE REMOVAL FROM SHELL FLANGE

12

Ø3/4" BOLT HOLE TYP. 4

HOT WATER OUTLET

ASME NAMEPLATE

42"

1 1/2" TYP.

COLD WATER INLET

1" FPT.

PIPE TO SAFE AREA

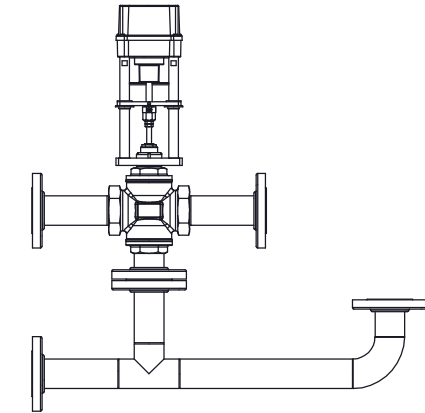
7/8" TYP.

**TOP VIEW**

**NOTES:**

- REFER TO PRODUCT SPECIFICATION FOR DESCRIPTION OF LETTERED ITEMS.
- INSTALLATION:** ALL COMPONENTS SHOWN HERE ARE PREWIRED & PREPARED BY AHS, LLC. CUSTOMER WILL ONLY NEED TO PLUMB WATER TO BE HEATED, PIPE STEAM AND CONDENSATE LINES, AND BRING ELECTRICITY TO UNIT.
- DIMENSIONS ARE SUBJECT TO CHANGE. CONSULT FACTORY FOR TIGHT DIMENSIONS.
- THIS CONFIGURATION CHANGES FOR VALVE SIZE 1/2" TO 2". SEE DETAIL 1 FOR REFERENCE.

APPROX. EMPTY WT:

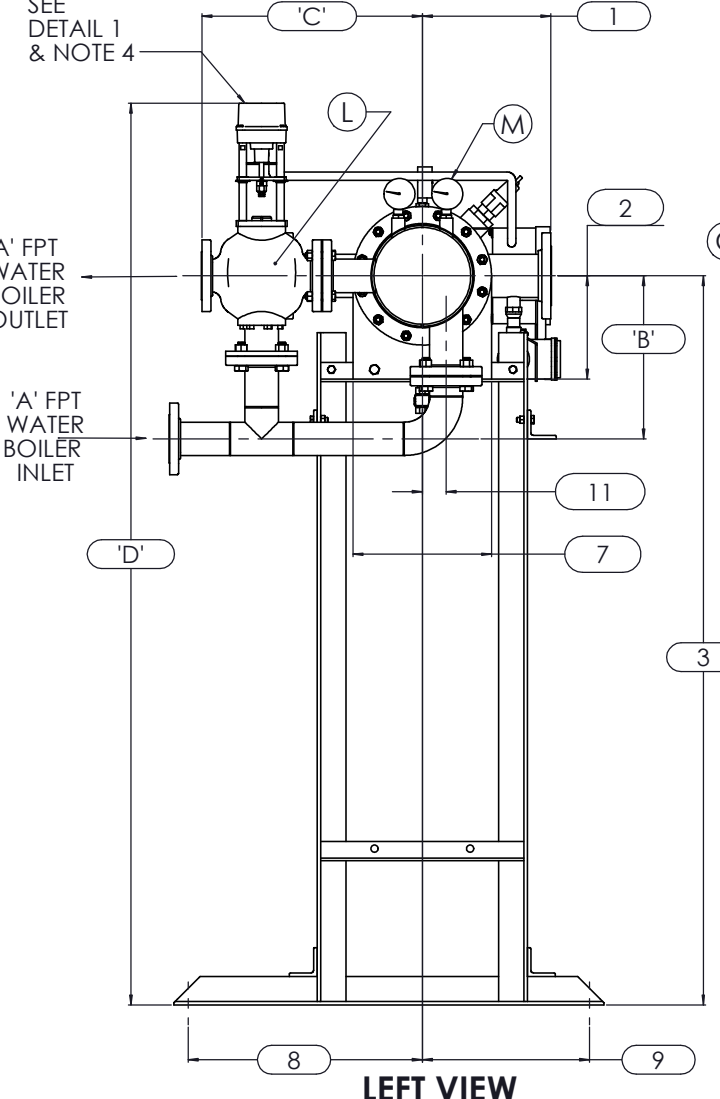


DETAIL 1

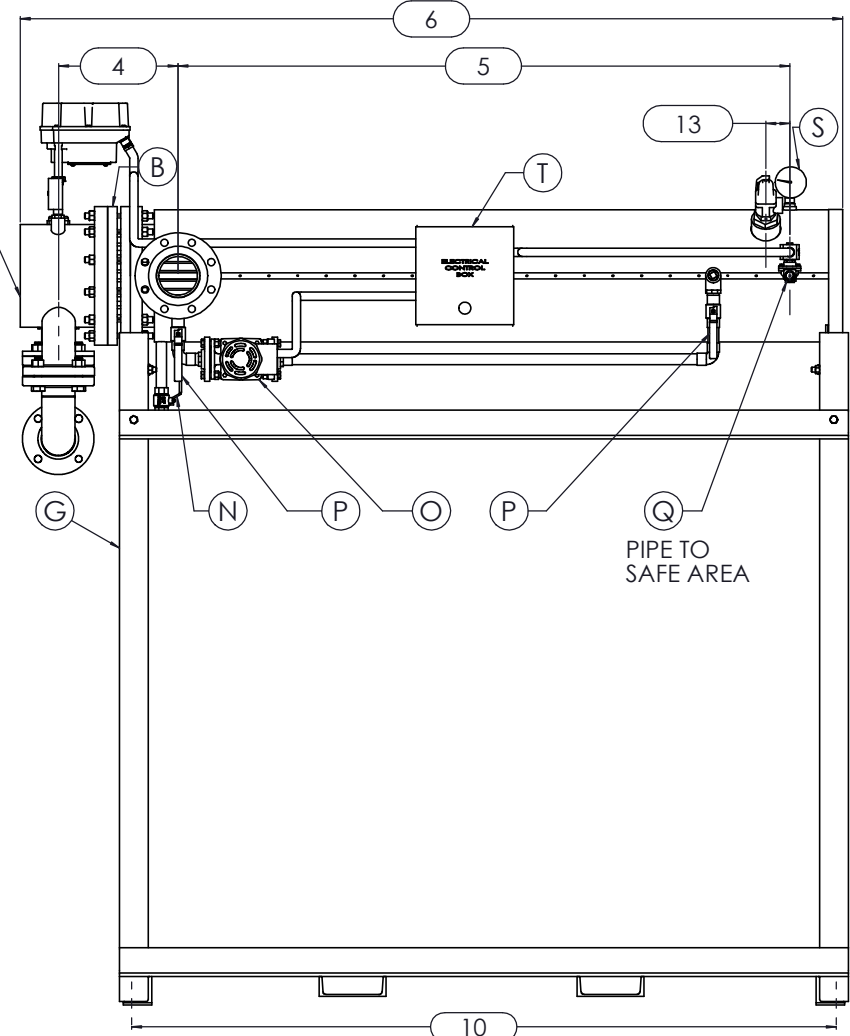
SEE DETAIL 1 & NOTE 4

'A' FPT WATER BOILER OUTLET

'A' FPT WATER BOILER INLET



**LEFT VIEW**



**FRONT VIEW**

PIPE TO SAFE AREA



	CERTIFIED BY <b>Ace Heaters, LLC</b> www.aceheatingllc.com
	MAXIMUM ALLOWABLE WORKING PRESSURE
	SHELL 150 PSI @ 210 °F
	TUBES 150 PSI @ 370 °F
	MIN. D.M.T. 0 °F @ 150 PSI
S/N _____ YEAR BUILT _____	
MODEL _____	
CAPACITY _____ GAL SA. SQFT	
JOB NO. _____ XXX	

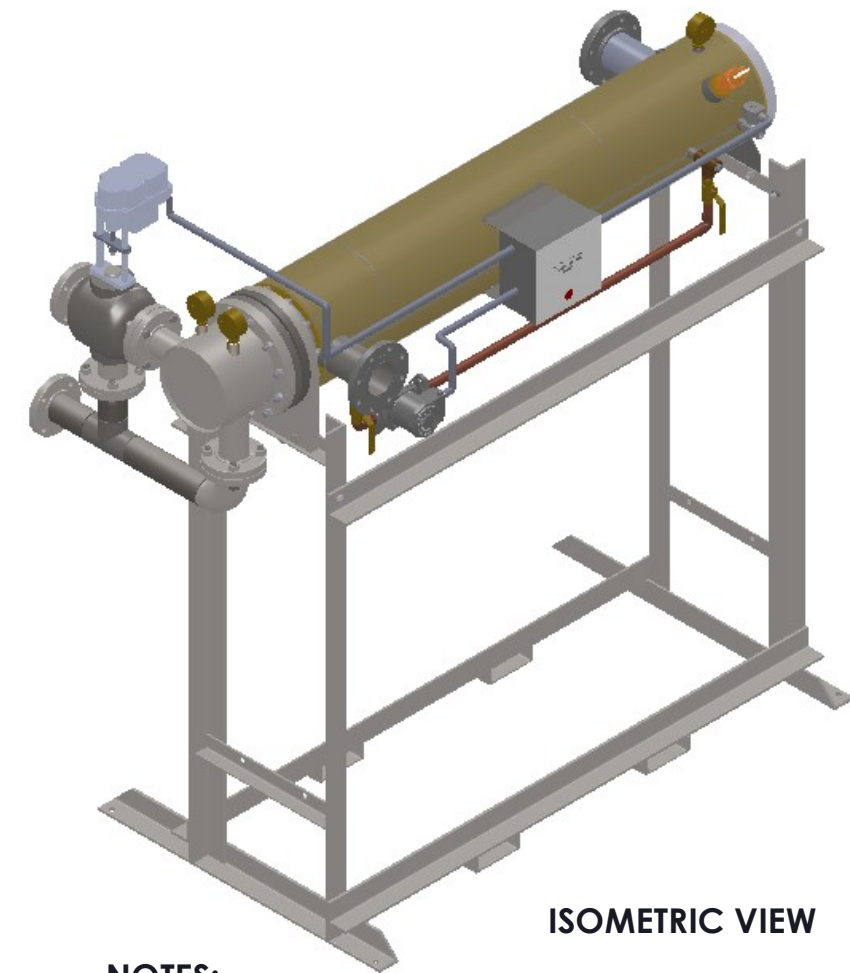


ASME SECTION VIII DIV 1 : DESIGN PRESSURE : (150) psig TEST PRESSURE : (195) psig MAX DESIGN TEMPERATURE : 370 °F	
NAME	DATE
DRAWN K.JIMENEZ	04/12/2023
CHKD	
APPVD	
SEC	
QA	

MATERIAL :	TITLE : SIHDW - COVER
FINISH :	MINIPACK SYSTEM-HORIZONTAL DW
WEIGHT :	3W WATER- ELEC. VALVE PACKAGE- SINGLE UNIT ON DUAL RACK
UNLESS OTHERWISE SPECIFIED DIMENSIONS ARE IN INCHES	DWG NO. SIHDWWE-1-DR-3W
TOLERANCE	REV. 02
DECIMALS .XX ± .05	SCALE : N/A
ANGULAR ± .5	S/O#
.XXX ± .010	MAX SURF
	SHEET : 1 OF 2

THE INFORMATION CONTAINED WITHIN THIS DRAWING IS PROPRIETARY AND THE SOLE PROPERTY OF ACE HEATERS, LLC. ANY REPRODUCTION IN PART OR AS A WHOLE WITHOUT THE WRITTEN PERMISSION OF ACE HEATERS, LLC IS PROHIBITED.

SIHDWWE-3W, DW-WATER- ELECTRIC 3-WAY MIXING VALVE PACKAGE - SINGLE UNIT ON RACK									
	MP SIZE	5	6	8	10	12	14	16	
DIMENSION	ITEMS	1	10	10 1/2	11 1/2	13 1/2	14 1/2	15 1/2	16 1/2
	2	7 11/16	8 3/16	10 1/8	10 13/16	12 1/2	12 1/4	14	
	3	59 15/16	60 7/16	62 3/8	76 1/16	77 3/4	77 1/2	79 1/4	
	4	10 5/8	11 1/4	12 1/8	13 3/8	15 5/8	17 11/16	18 9/16	
	5	61 1/2	62	61 3/4	64	62 1/2	72	75 3/4	
	6	80 3/16	81 5/16	83 9/16	85 9/16	88 7/16	100 7/8	106 1/2	
	7	8 3/4	9 7/8	11 7/8	14 1/2	16 5/8	18 1/2	20	
	8	26 1/2	26 1/2	26 1/2	26 1/2	26 1/2	26 1/2	26 1/2	
	9	15 1/2	15 1/2	15 1/2	15 1/2	15 1/2	15 1/2	15 1/2	
	10	68 1/4	69 3/8	70 3/8	71 7/8	74 5/16	82 15/16	82 15/16	
	11	1 3/8	1 1/2	2 1/16	2 1/2	3 1/16	3 1/8	3 1/4	
	12	64	64	64	64	64	75	80	
	13	2 1/2	2 1/2	2 1/2	2 1/2	2 1/2	2 1/2	2 1/2	
INLET PIPE SIZE		2 1/2 FLG.	2 1/2 FLG.	3 FLG.	4 FLG.	4 FLG.	5 FLG.	6 FLG.	
OUTLET PIPE SIZE		2 1/2 FLG.	2 1/2 FLG.	3 FLG.	4 FLG.	4 FLG.	5 FLG.	6 FLG.	
VALVE SIZE 'A'	ITEM	VALVE SIZE AND OVERALL LOCATION							
1/2"	'B'	58	58 4/9	60 3/8	74	75 3/4	75 1/2	77 1/4	
	'C'	17 5/8	17 7/8	18 7/8	21 3/8	22 7/8	24 7/8	26 7/8	
	'D'	75 11/16	76 3/16	78 1/8	91 13/16	93 1/2	93 1/4	95	
3/4"	'B'	57 2/3	58 1/5	60 1/8	73 4/5	75 1/2	75 1/4	77	
	'C'	17 5/8	17 7/8	18 7/8	21 3/8	22 7/8	24 7/8	26 7/8	
	'D'	75 11/16	76 3/16	78 1/8	91 13/16	93 1/2	93 1/4	95	
1"	'B'	57 11/16	58 3/16	60 1/8	73 13/16	75 1/2	75 1/4	77	
	'C'	17 5/8	17 7/8	18 7/8	21 3/8	22 7/8	24 7/8	26 7/8	
	'D'	75 11/16	76 3/16	78 1/8	91 13/16	93 1/2	93 1/4	95	
1 1/4"	'B'	57 4/9	58	59 7/8	73 4/7	75 1/4	75	76 3/4	
	'C'	18 1/2	18 3/4	19 3/4	22 1/4	23 3/4	25 3/4	27 3/4	
	'D'	76 5/16	76 13/16	78 3/4	92 7/16	94 1/8	93 7/8	95 5/8	
1 1/2"	'B'	56 15/16	57 7/16	59 3/8	73 1/16	74 3/4	74 1/2	76 1/4	
	'C'	18 1/2	18 3/4	19 3/4	22 1/4	23 3/4	25 3/4	27 3/4	
	'D'	76 5/16	76 13/16	78 3/4	92 7/16	94 1/8	93 7/8	95 5/8	
2"	'B'	55 15/16	56 7/16	58 3/8	72 1/16	73 3/4	73 1/2	75 1/4	
	'C'	19 1/4	19 1/2	20 1/2	23	24 1/2	26 1/2	28 1/2	
	'D'	76 9/16	77 1/16	79	92 11/16	94 3/8	94 1/8	95 7/8	
2 1/2"	'B'	55 15/16	56 7/16	58 3/8	72 1/16	73 3/4	73 1/2	75 1/4	
	'C'	15 3/4	16	17	19 1/2	21	23	25	
	'D'	78 15/16	79 7/16	81 3/8	95 1/16	96 3/4	96 1/2	98 1/4	
3"	'B'		56 3/16	58 1/8	71 13/16	73 1/2	73 1/4	75	
	'C'	N/A	17	18	20 1/2	22	24	26	
	'D'		80 1/16	82	95 11/16	97 3/8	97 1/8	98 7/8	
4"	'B'			57 3/8	71 1/16	72 3/4	72 1/2	74 1/4	
	'C'	N/A	N/A	21	23 1/2	25	27	29	
	'D'			83 1/8	96 13/16	98 1/2	98 1/4	100	
5"	'B'				70	71 3/4	71 1/2	73 1/4	
	'C'	N/A	N/A	N/A	26 1/4	27 3/4	29 3/4	31 3/4	
	'D'				97 5/16	99	98 3/4	100 1/2	



ISOMETRIC VIEW

**NOTES:**

- 1/ DIMENSIONS IN INCHES, AND SUBJECT TO CHANGE WITHOUT NOTICE.
- 2/ DIM 'B', 'C', 'D' ARE TO BE APPROXIMATED ONLY, CONSULT FACTORY FOR TIGHT DIMENSIONS.



a nudyne company



ASME SECTION VIII DIV 1 : DESIGN PRESSURE : (150) psig TEST PRESSURE : (195) psig MAX DESIGN TEMPERATURE : 370 °F	
NAME	DATE
K.JIMENEZ	04/12/2023
DRWN	
CHLD	
APPVD	
SEC	
QA	

MATERIAL :	TITLE : SIHDW - COVER MINIPACK SYSTEM-HORIZONTAL DW 3W WATER- ELEC. VALVE PACKAGE- SINGLE UNIT ON DUAL RACK
FINISH :	
WEIGHT :	
UNLESS OTHERWISE SPECIFIED DIMENSIONS ARE IN INCHES	
TOLERANCE	
DECIMALS	ANGULAR
.XX ± .05	± .5
.XXX ± .010	MAX SURF
DWG NO. SIHDWWE-1-DR-3W-DIM	REV. 02
SCALE : N/A	S/O#
SHEET : 2 OF 2	

THE INFORMATION CONTAINED WITHIN THIS DRAWING IS PROPRIETARY AND THE SOLE PROPERTY OF ACE HEATERS, LLC. ANY REPRODUCTION IN PART OR AS A WHOLE WITHOUT THE WRITTEN PERMISSION OF ACE HEATERS, LLC IS PROHIBITED.