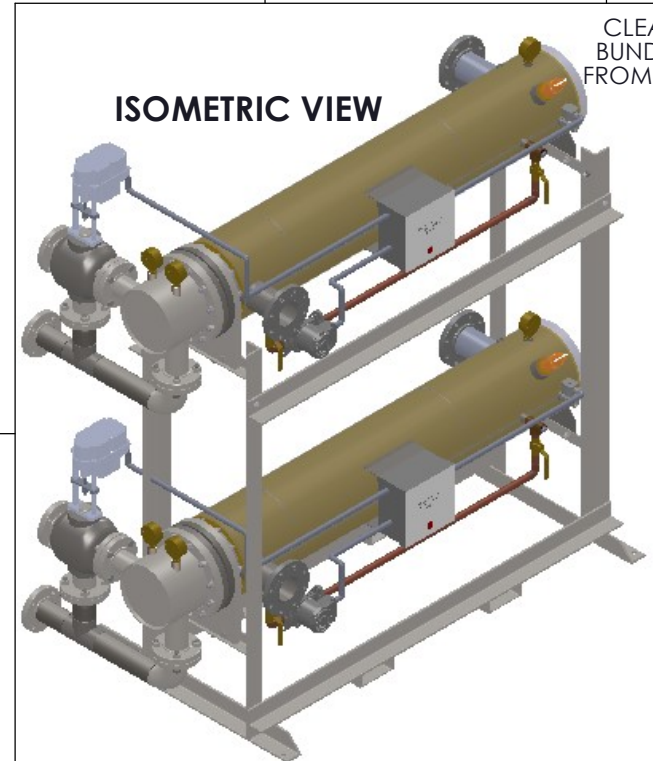
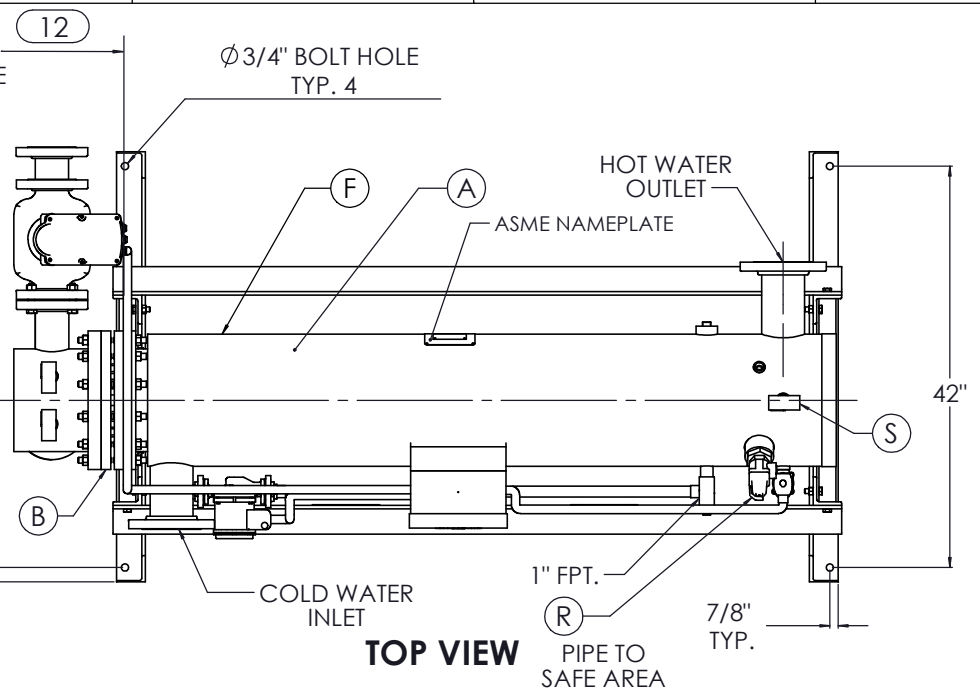


8 7 6 5 4 3 2 1



ISOMETRIC VIEW

CLEARANCE FOR BUNDLE REMOVAL FROM SHELL FLANGE

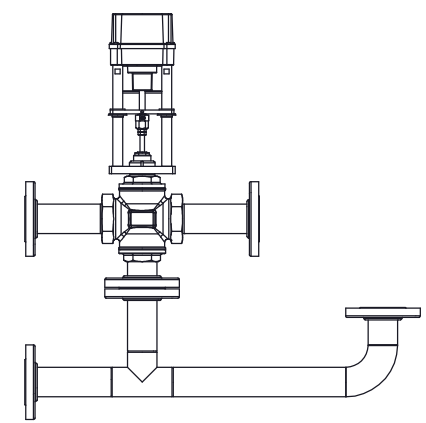


TOP VIEW

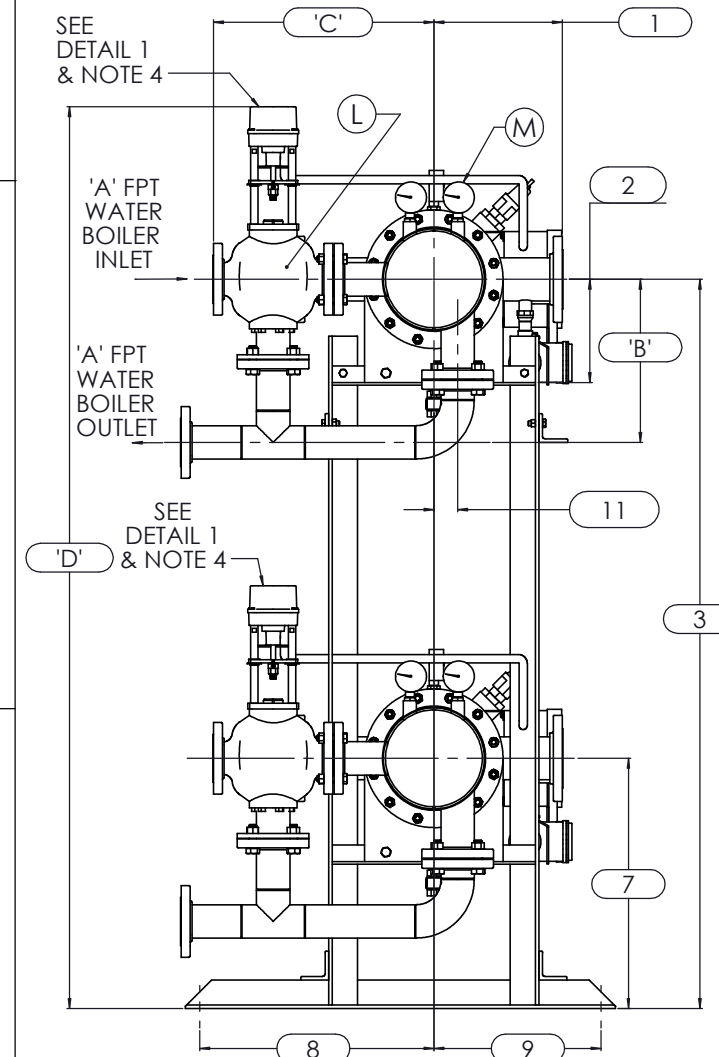
NOTES:

1. REFER TO PRODUCT SPECIFICATION FOR DESCRIPTION OF LETTERED ITEMS.
2. **INSTALLATION:** ALL COMPONENTS SHOWN HERE ARE PREWIRED & PREPARED BY ACE HEATERS, LLC. CUSTOMER WILL ONLY NEED TO PLUMB WATER TO BE HEATED, PIPE STEAM AND CONDENSATE LINES, AND BRING ELECTRICITY TO UNIT.
3. DIMENSIONS ARE SUBJECT TO CHANGE. CONSULT FACTORY FOR TIGHT DIMENSIONS.
4. THIS CONFIGURATION CHANGES FOR VALVE SIZE 1/2" TO 2". SEE DETAIL 1 FOR REFERENCE.

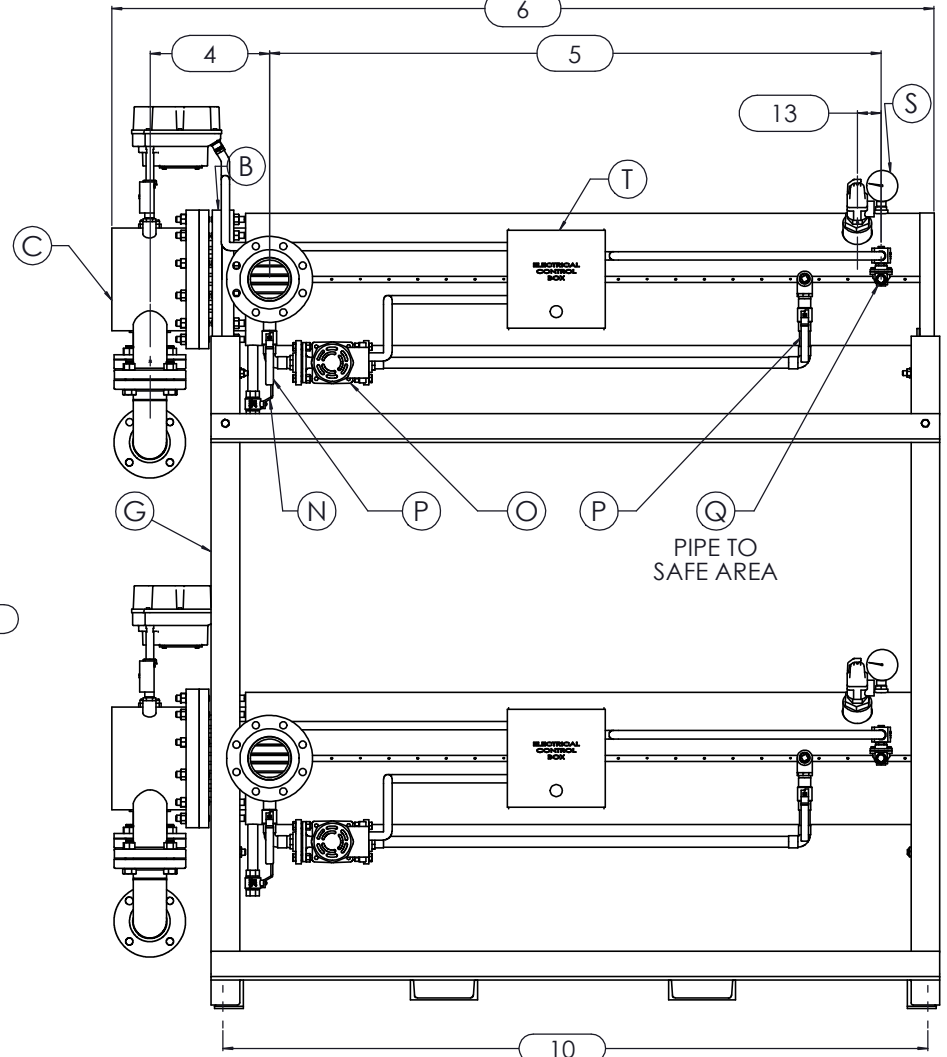
APPROX. EMPTY WT:



DETAIL 1



LEFT VIEW



FRONT VIEW



	CERTIFIED BY Ace Heaters, LLC www.aceheatingllc.com
	MAXIMUM ALLOWABLE WORKING PRESSURE SHELL 150 PSI @ 210 °F TUBES 150 PSI @ 370 °F MIN. D.M.T. 0 °F @ 150 PSI S/N _____ YEAR BUILT _____
MODEL _____ CAPACITY _____ GAL SA. SQFT JOB NO. _____ XXX	



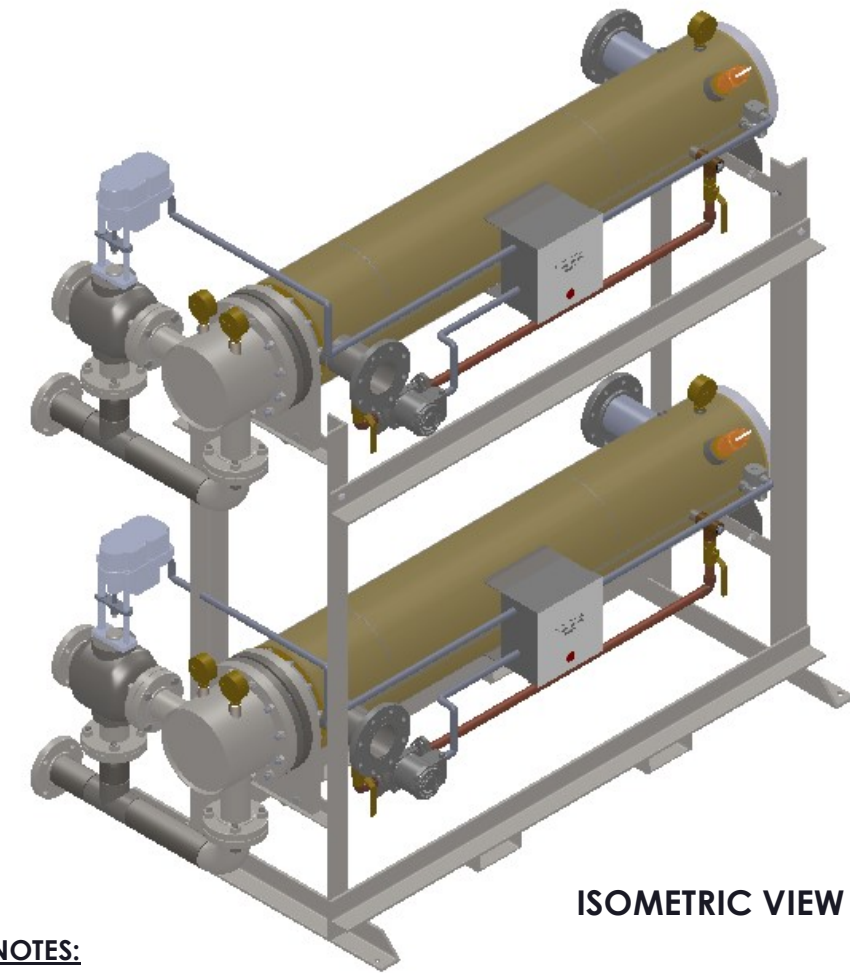
ASME SECTION VIII DIV 1 : DESIGN PRESSURE : (150) psig TEST PRESSURE : (195) psig MAX DESIGN TEMPERATURE : 370 °F	
NAME	DATE
DRAWN K.JIMENEZ	04/12/2023
CHKD	
APPVD	
DECIMALS	ANGULAR
XX ± .05	± 5
.XXX ± .010	MAX SURF

Ace Heaters, LLC www.aceheaters.com	
MATERIAL :	TITLE : SIHDW - COVER
FINISH :	MINIPACK SYSTEM-HORIZONTAL DW
WEIGHT :	3W WATER- ELEC. VALVE PACKAGE-DUAL UNIT ON DUAL RACK
UNLESS OTHERWISE SPECIFIED DIMENSIONS ARE IN INCHES	DWG NO. SIHDWWE-2-DR-3W
TOLERANCE	REV. 02
SCALE : N/A	S/O #
SHEET : 1 OF 2	

THE INFORMATION CONTAINED WITHIN THIS DRAWING IS PROPRIETARY AND THE SOLE PROPERTY OF ACE HEATERS, LLC. ANY REPRODUCTION IN PART OR AS A WHOLE WITHOUT THE WRITTEN PERMISSION OF ACE HEATERS, LLC IS PROHIBITED.

8 7 6 5 4 3 2 1

		SIHDWWE-2-DR-3W, DW-WATER- ELECTRIC 3-WAY MIXING VALVE PACKAGE, DUAL UNIT ON RACK								
		MP SIZE	5	6	8	10	12	14	16	
D	ITEMS	1	10	10 1/2	11 1/2	13 1/2	14 1/2	15 1/2	16 1/2	
	DIMENSION	2	7 11/16	8 3/16	10 1/8	10 13/16	12 1/2	12 1/4	14	
		3	59 15/16	60 7/16	62 3/8	76 1/16	77 3/4	77 1/2	79 1/4	
		4	10 5/8	11 1/4	12 1/8	13 3/8	15 5/8	17 11/16	18 9/16	
		5	61 1/2	62	61 3/4	64	62 1/2	72	75 3/4	
		6	80 3/16	81 5/16	83 9/16	85 9/16	88 7/16	100 7/8	106 1/2	
		7	22 15/16	23 7/16	25 3/8	26 3/16	27 7/8	27 5/8	29 3/8	
		8	26 1/2	26 1/2	26 1/2	26 1/2	26 1/2	26 1/2	26 1/2	
		9	15 1/2	15 1/2	15 1/2	15 1/2	15 1/2	15 1/2	15 1/2	
		10	68 1/4	69 3/8	70 3/8	71 7/8	74 5/16	82 15/16	82 15/16	
		11	1 3/8	1 1/2	2 1/16	2 1/2	3 1/16	3 1/8	3 1/4	
		12	64	64	64	64	64	75	80	
		13	2 1/2	2 1/2	2 1/2	2 1/2	2 1/2	2 1/2	2 1/2	
C		INLET PIPE SIZE		2 1/2 FLG.	2 1/2 FLG.	3 FLG.	4 FLG.	4 FLG.	5 FLG.	6 FLG.
	OUTLET PIPE SIZE		2 1/2 FLG.	2 1/2 FLG.	3 FLG.	4 FLG.	4 FLG.	5 FLG.	6 FLG.	
VALVE SIZE 'A'	ITEM	VALVE SIZE AND OVERALL LOCATION								
		'B'	58	58 4/9	60 3/8	74	75 3/4	75 1/2	77 1/4	
1/2"	'C'	17 5/8	17 7/8	18 7/8	21 3/8	22 7/8	24 7/8	26 7/8		
	'D'	75 11/16	76 3/16	78 1/8	91 13/16	93 1/2	93 1/4	95		
	'B'	57 2/3	58 1/5	60 1/8	73 4/5	75 1/2	75 1/4	77		
3/4"	'C'	17 5/8	17 7/8	18 7/8	21 3/8	22 7/8	24 7/8	26 7/8		
	'D'	75 11/16	76 3/16	78 1/8	91 13/16	93 1/2	93 1/4	95		
	'B'	57 11/16	58 3/16	60 1/8	73 13/16	75 1/2	75 1/4	77		
1"	'C'	17 5/8	17 7/8	18 7/8	21 3/8	22 7/8	24 7/8	26 7/8		
	'D'	75 11/16	76 3/16	78 1/8	91 13/16	93 1/2	93 1/4	95		
	'B'	57 4/9	58	59 7/8	73 4/7	75 1/4	75	76 3/4		
1 1/4"	'C'	18 1/2	18 3/4	19 3/4	22 1/4	23 3/4	25 3/4	27 3/4		
	'D'	76 5/16	76 13/16	78 3/4	92 7/16	94 1/8	93 7/8	95 5/8		
	'B'	56 15/16	57 7/16	59 3/8	73 1/16	74 3/4	74 1/2	76 1/4		
1 1/2"	'C'	18 1/2	18 3/4	19 3/4	22 1/4	23 3/4	25 3/4	27 3/4		
	'D'	76 5/16	76 13/16	78 3/4	92 7/16	94 1/8	93 7/8	95 5/8		
	'B'	55 15/16	56 7/16	58 3/8	72 1/16	73 3/4	73 1/2	75 1/4		
2"	'C'	19 1/4	19 1/2	20 1/2	23	24 1/2	26 1/2	28 1/2		
	'D'	76 9/16	77 1/16	79	92 11/16	94 3/8	94 1/8	95 7/8		
	'B'	55 15/16	56 7/16	58 3/8	72 1/16	73 3/4	73 1/2	75 1/4		
2 1/2"	'C'	15 3/4	16	17	19 1/2	21	23	25		
	'D'	78 15/16	79 7/16	81 3/8	95 1/16	96 3/4	96 1/2	98 1/4		
	'B'	N/A	56 3/16	58 1/8	71 13/16	73 1/2	73 1/4	75		
3"	'C'	N/A	17	18	20 1/2	22	24	26		
	'D'	N/A	80 1/16	82	95 11/16	97 3/8	97 1/8	98 7/8		
	'B'	N/A	N/A	57 3/8	71 1/16	72 3/4	72 1/2	74 1/4		
4"	'C'	N/A	N/A	21	23 1/2	25	27	29		
	'D'	N/A	N/A	83 1/8	96 13/16	98 1/2	98 1/4	100		
	'B'	N/A	N/A	N/A	70	71 3/4	71 1/2	73 1/4		
5"	'C'	N/A	N/A	N/A	26 1/4	27 3/4	29 3/4	31 3/4		
	'D'	N/A	N/A	N/A	97 5/16	99	98 3/4	100 1/2		



ISOMETRIC VIEW

NOTES:

- 1/ DIMENSIONS IN INCHES, AND SUBJECT TO CHANGE WITHOUT NOTICE.
- 2/ DIM 'B', 'C', 'D' ARE TO BE APPROXIMATED ONLY, CONSULT FACTORY FOR TIGHT DIMENSIONS.



a nudyne company



ASME SECTION VIII DIV 1 : DESIGN PRESSURE : (150) psig TEST PRESSURE : (195) psig MAX DESIGN TEMPERATURE : 370 °F	
NAME	DATE
K.JIMENEZ	04/12/2023
DRWN	
CHLD	
APP'D	
SEC	
QA	

MATERIAL :		TITLE : SIHDW - COVER	
FINISH :		MINIPACK SYSTEM-HORIZONTAL DW	
WEIGHT :		3W WATER- ELEC. VALVE PACKAGE-DUAL UNIT ON DUAL RACK	
UNLESS OTHERWISE SPECIFIED DIMENSIONS ARE IN INCHES		DWG NO. SIHDWWE-1-DR-3W-DIM	
TOLERANCE		REV. 02	
DECIMALS ± .05		SCALE : N/A	
ANGULAR ± .5		S/O#	
MAX SURF .XXX ± .010		SHEET : 2 OF 2	

THE INFORMATION CONTAINED WITHIN THIS DRAWING IS PROPRIETARY AND THE SOLE PROPERTY OF ACE HEATERS, LLC. ANY REPRODUCTION IN PART OR AS A WHOLE WITHOUT THE WRITTEN PERMISSION OF ACE HEATERS, LLC IS PROHIBITED.