

8

7

6

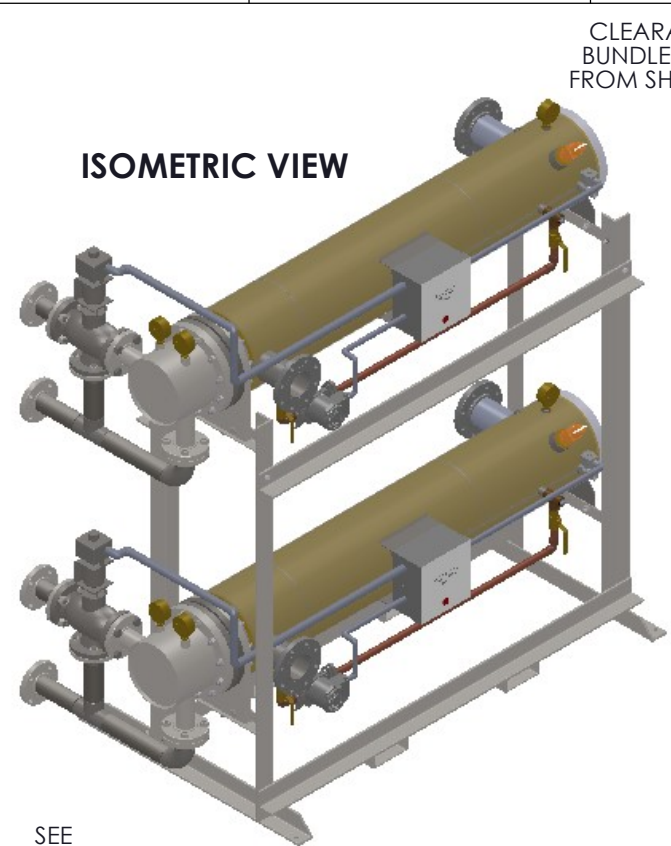
5

4

3

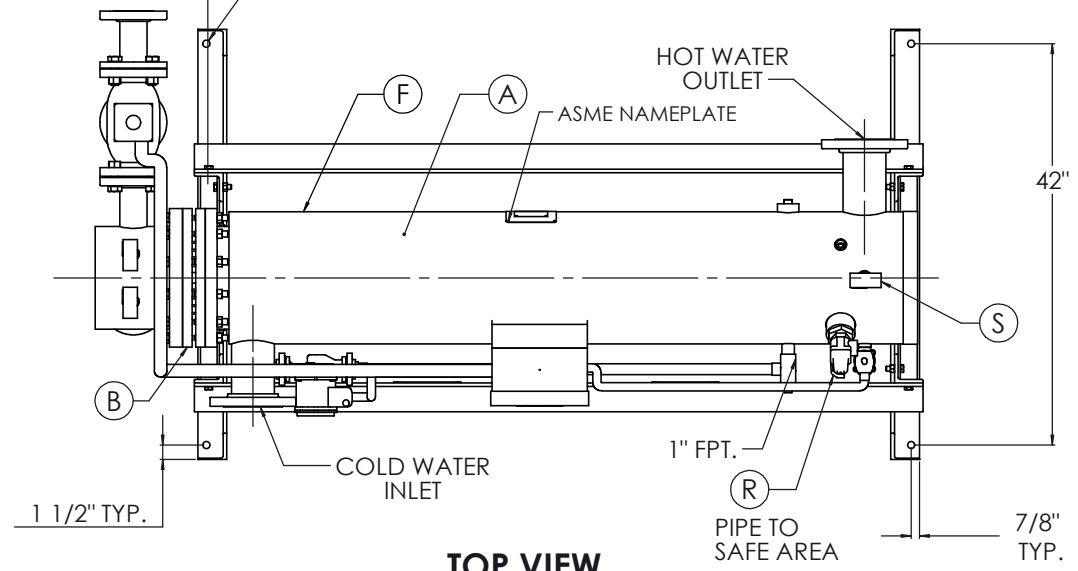
2

1



CLEARANCE FOR BUNDLE REMOVAL FROM SHELL FLANGE

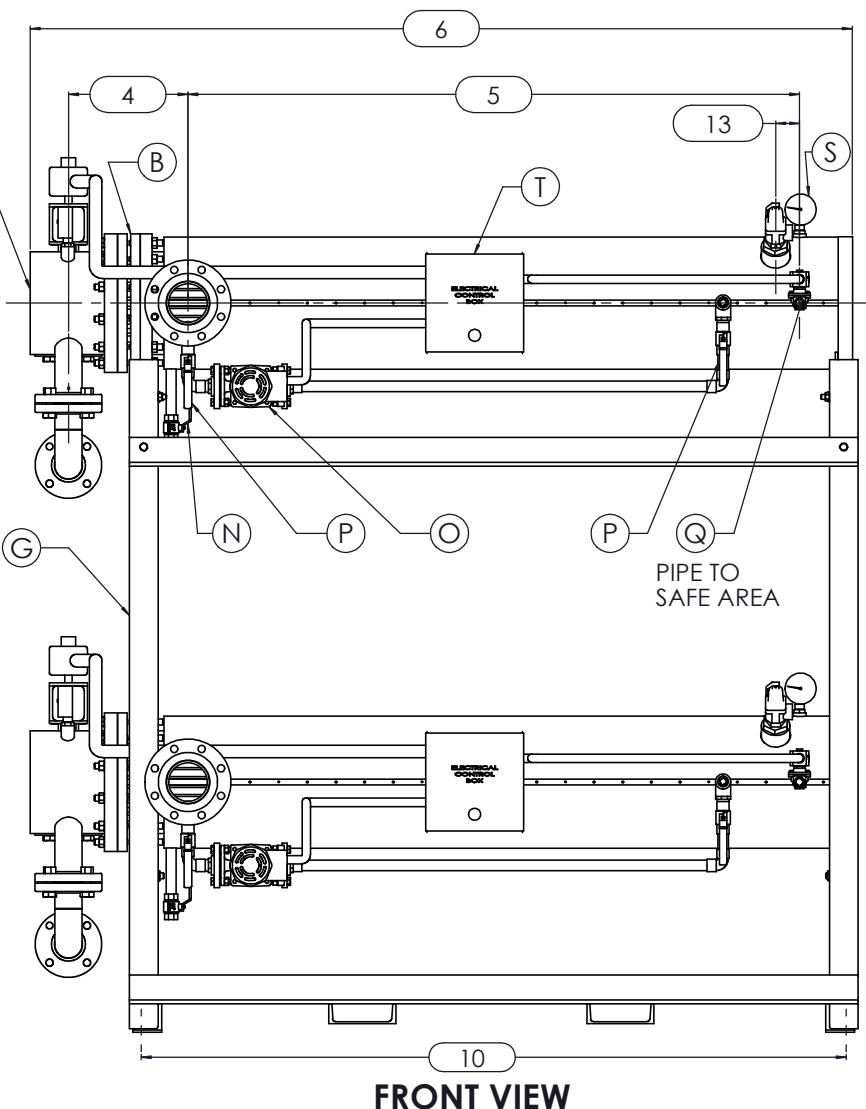
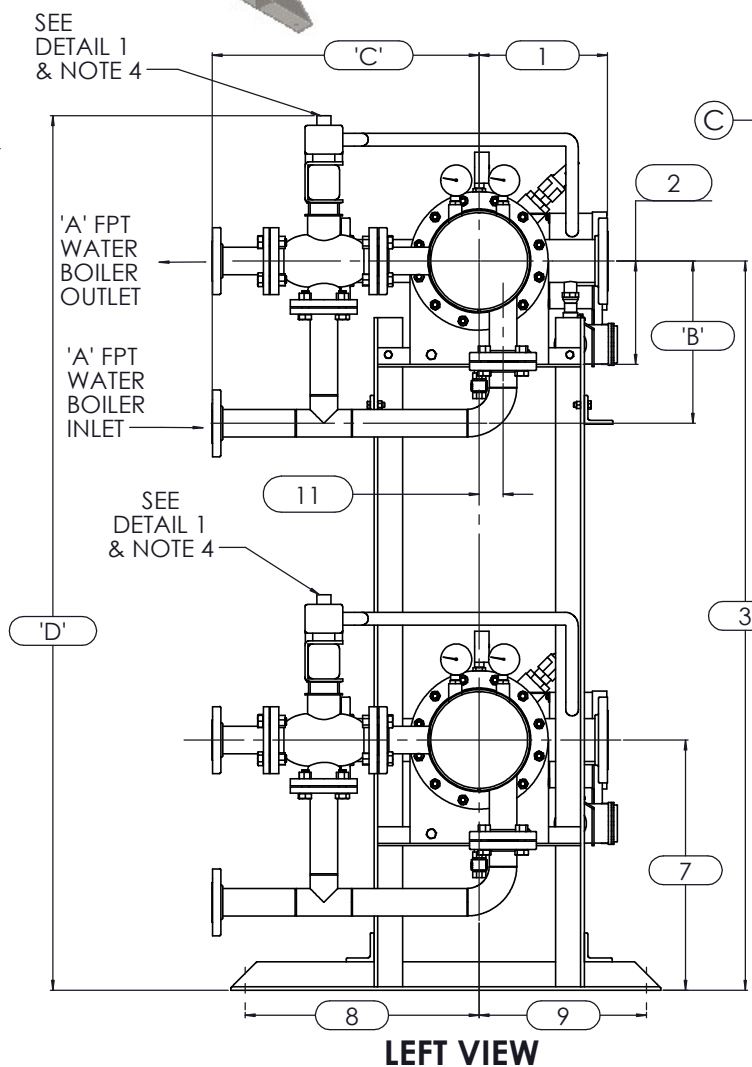
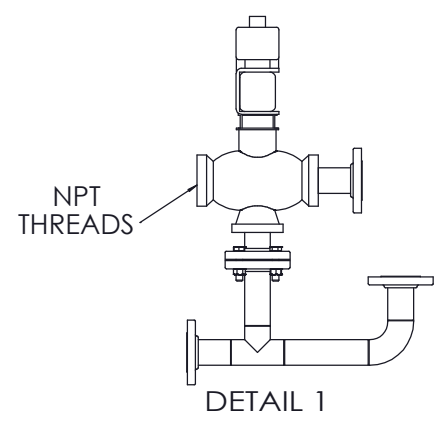
Ø3/4" BOLT HOLE TYP. 4



NOTES:

1. REFER TO PRODUCT SPECIFICATION FOR DESCRIPTION OF LETTERED ITEMS.
2. **INSTALLATION:** ALL COMPONENTS SHOWN HERE ARE PREWIRED & PREPIPED BY ACE HEATERS, LLC. CUSTOMER WILL ONLY NEED TO PLUMB WATER TO BE HEATED, PIPE STEAM AND CONDENSATE LINES, AND BRING ELECTRICITY TO UNIT.
3. DIMENSIONS ARE SUBJECT TO CHANGE. CONSULT FACTORY FOR TIGHT DIMENSIONS.
4. THIS CONFIGURATION CHANGES FOR VALVE SIZE 1/2" TO 2". SEE DETAIL 1 FOR REFERENCE.

APPROX. EMPTY WT: 1800 lbs. each



	CERTIFIED BY	Ace Heaters, LLC www.aceheatingllc.com
	MAXIMUM ALLOWABLE WORKING PRESSURE	SHELL 150 PSI @ 210 °F TUBES 150 PSI @ 370 °F MIN. D.M.T. 0 °F @ 150 PSI S/N _____ YEAR BUILT _____
MODEL _____		CAPACITY _____ GAL SA. SQFT
JOB NO. _____		XXX



ASME SECTION VIII DIV 1: DESIGN PRESSURE : (150) psig TEST PRESSURE : (195) psig MAX DESIGN TEMPERATURE : 370 °F	
NAME	DATE
DRAWN K. JIMENEZ	04/12/2023
CHLD	
APPVD	
SEC	
QA	

Ace Heaters, LLC www.aceheaters.com		TITLE : SIHDW - COVER MINIPACK SYSTEM-HORIZONTAL DW 3W WATER- SIEMENS ELEC. VALVE PACKAGE-DUAL UNIT ON DUAL RACK
MATERIAL : FINISH : WEIGHT :	DWG NO. SIHDWWE-2-DR-3W-SIE REV. 02	SCALE : N/A S/O # SHEET : 1 OF 2

THE INFORMATION CONTAINED WITHIN THIS DRAWING IS PROPRIETARY AND THE SOLE PROPERTY OF ACE HEATERS, LLC. ANY REPRODUCTION IN PART OR AS A WHOLE WITHOUT THE WRITTEN PERMISSION OF ACE HEATERS, LLC IS PROHIBITED.

8

7

6

5

4

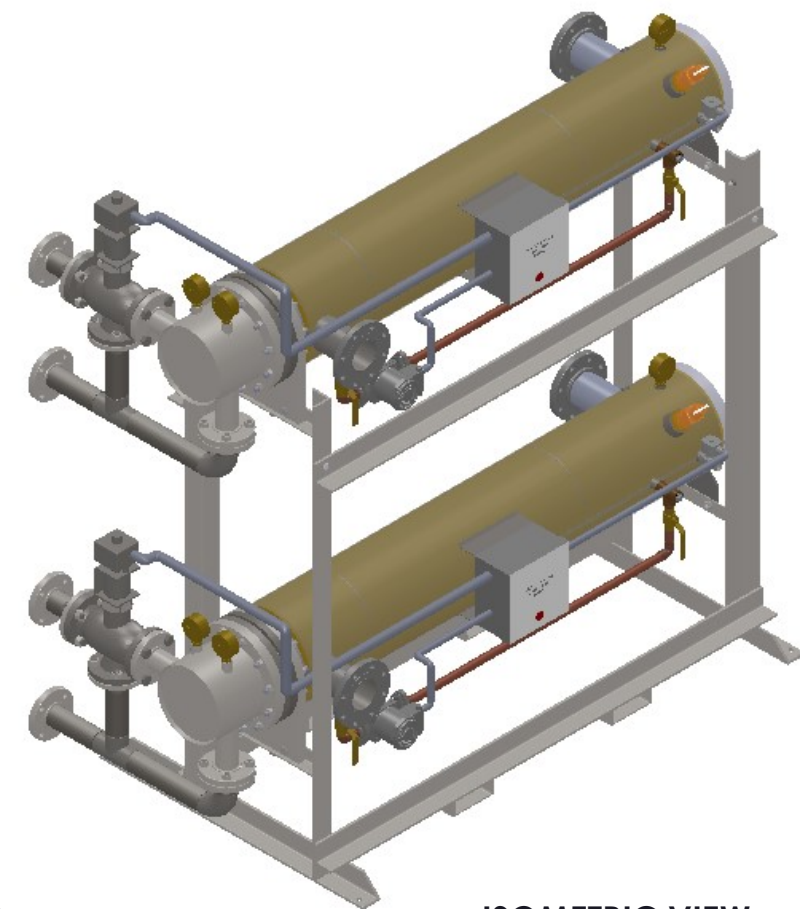
3

2

1

SIHDWWE-2-DR-3W-SIE, DW - WATER - SIEMENS ELECTRIC 3-WAY MIXING VALVE PACKAGE, DUAL UNIT ON RACK

MP SIZE	5	6	8	10	12	14	16
ITEMS	10	10 1/2	11 1/2	13 1/2	14 1/2	15 1/2	16 1/2
DIMENSION	2	7 11/16	8 3/16	10 1/8	10 13/16	12 1/2	12 1/4
	3	59 15/16	60 7/16	62 3/8	76 1/16	77 3/4	77 1/2
	4	10 5/8	11 1/4	12 1/8	13 3/8	15 5/8	17 11/16
	5	61 1/2	62	61 3/4	64	62 1/2	72
	6	80 3/16	81 5/16	83 9/16	85 9/16	88 7/16	100 7/8
	7	22 15/16	23 7/16	25 3/8	26 3/16	27 7/8	27 5/8
	8	26 1/2	26 1/2	26 1/2	26 1/2	26 1/2	26 1/2
	9	15 1/2	15 1/2	15 1/2	15 1/2	15 1/2	15 1/2
	10	68 1/4	69 3/8	70 3/8	71 7/8	74 5/16	82 15/16
	11	1 3/8	1 1/2	2 1/16	2 1/2	3 1/16	3 1/8
	12	64	64	64	64	64	75
	13	2 1/2	2 1/2	2 1/2	2 1/2	2 1/2	2 1/2
	INLET PIPE SIZE	2 1/2 FLG.	2 1/2 FLG.	3 FLG.	4 FLG.	4 FLG.	5 FLG.
OUTLET PIPE SIZE	2 1/2 FLG.	2 1/2 FLG.	3 FLG.	4 FLG.	4 FLG.	5 FLG.	6 FLG.
VALVE SIZE 'A'	ITEM	VALVE SIZE AND OVERALL LOCATION					
1/2"	'B'	58	58 4/9	60 3/8	74	75 3/4	75 1/2
	'C'	12 1/16	12 5/16	13 5/16	15 13/16	17 5/16	19 5/16
	'D'	69 3/8	69 7/8	71 13/16	85 1/2	87 3/16	86 15/16
3/4"	'B'	57 2/3	58 1/5	60 1/8	73 4/5	75 1/2	75 1/4
	'C'	12 11/16	12 15/16	13 15/16	16 7/16	17 15/16	19 15/16
	'D'	70 3/16	70 11/16	72 5/8	86 5/16	88	87 3/4
1"	'B'	57 11/16	58 3/16	60 1/8	73 13/16	75 1/2	75 1/4
	'C'	13 1/4	13 1/2	14 1/2	17	18 1/2	20 1/2
	'D'	70 9/16	71 1/16	73	86 11/16	88 3/8	88 1/8
1 1/4"	'B'	57 4/9	58	59 7/8	73 4/7	75 1/4	75
	'C'	13 7/8	14 1/8	15 1/8	17 5/8	19 1/8	21 1/8
	'D'	71 3/16	71 11/16	73 5/8	87 5/16	89	88 3/4
1 1/2"	'B'	56 15/16	57 7/16	59 3/8	73 1/16	74 3/4	74 1/2
	'C'	14 7/16	14 11/16	15 11/16	18 3/16	19 11/16	21 11/16
	'D'	72 9/16	73 1/16	75	88 11/16	90 3/8	90 1/8
2"	'B'	55 15/16	56 7/16	58 3/8	72 1/16	73 3/4	73 1/2
	'C'	15 5/8	15 7/8	16 7/8	19 3/8	20 7/8	22 7/8
	'D'	73 5/16	73 13/16	75 3/4	89 7/16	91 1/8	90 7/8
2 1/2"	'B'	55 15/16	56 7/16	58 3/8	72 1/16	73 3/4	73 1/2
	'C'	18 3/16	18 7/16	19 7/16	21 15/16	23 7/16	25 7/16
	'D'	75 1/8	75 5/8	77 9/16	91 1/4	92 15/16	92 11/16
3"	'B'	N/A	56 3/16	58 1/8	71 13/16	73 1/2	73 1/4
	'C'	N/A	19 1/4	20 1/4	22 3/4	24 1/4	26 1/4
	'D'	N/A	80 11/16	82 5/8	96 5/16	98	97 3/4
4"	'B'	N/A	N/A	57 3/8	71 1/16	72 3/4	72 1/2
	'C'	N/A	N/A	21 3/4	24 1/4	25 3/4	27 3/4
	'D'	N/A	N/A	85 3/16	98 7/8	100 9/16	100 5/16
5"	'B'	N/A	N/A	N/A	70	71 3/4	71 1/2
	'C'	N/A	N/A	N/A	24 1/2	26	28
	'D'	N/A	N/A	N/A	98 7/8	100 9/16	100 5/16



ISOMETRIC VIEW

NOTES:

- 1/ DIMENSIONS IN INCHES, AND SUBJECT TO CHANGE WITHOUT NOTICE.
- 2/ DIM 'B', 'C', 'D' ARE TO BE APPROXIMATED ONLY, CONSULT FACTORY FOR TIGHT DIMENSIONS.



ASME SECTION VIII DIV 1	DESIGN PRESSURE : (150) psig
TEST PRESSURE : (195) psig	MAX DESIGN TEMPERATURE : 370 °F
DRAWN	K.JIMENEZ
DATE	04/12/2023
APP'D	
REV	
QA	

MATERIAL :	TITLE :	SIHDW - COVER
FINISH :	MINIPACK SYSTEM-HORIZONTAL DW	
WEIGHT :	3W WATER- SIEMENS ELEC. VALVE	
	PACKAGE-DUAL UNIT ON DUAL RACK	
UNLESS OTHERWISE SPECIFIED DIMENSIONS ARE IN INCHES	DWG NO.	SIHDWWE-2-DR-3W-SIE-DIM
TOLERANCE	REV.	02
DECIMALS .XX ± .05	SCALE : N/A	S/O#
ANGULAR .XXX ± .010		SHEET : 2 OF 2
MAX SURF		

THE INFORMATION CONTAINED WITHIN THIS DRAWING IS PROPRIETARY AND THE SOLE PROPERTY OF ACE HEATERS, LLC. ANY REPRODUCTION IN PART OR AS A WHOLE WITHOUT THE WRITTEN PERMISSION OF ACE HEATERS, LLC IS PROHIBITED.