

8

7

6

5

4

3

2

1

D

C

B

A

D

C

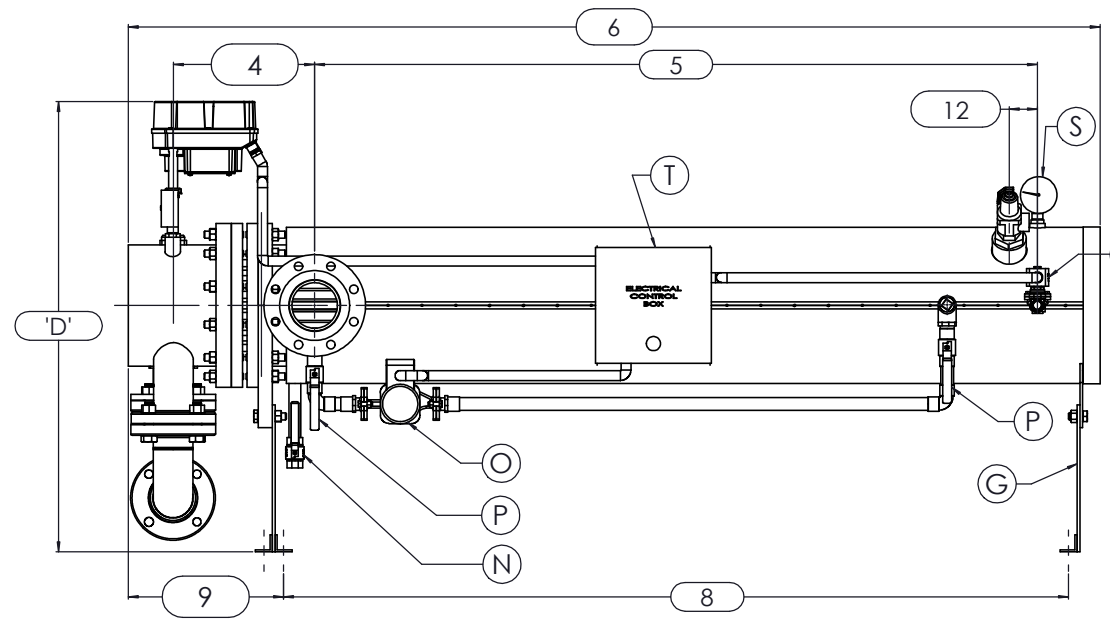
B

A

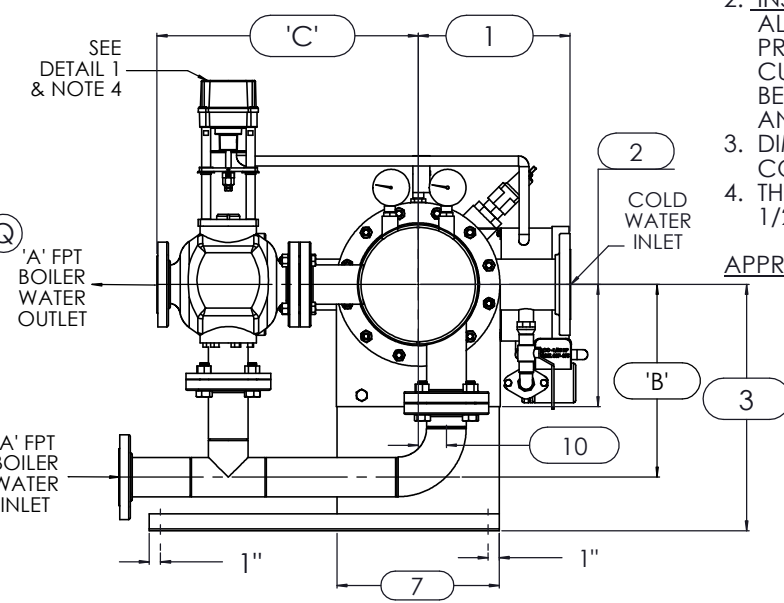
NOTES:

1. REFER TO PRODUCT SPECIFICATION FOR DESCRIPTION OF LETTERED ITEMS.
2. **INSTALLATION:**
ALL COMPONENTS SHOWN HERE ARE PREWIRED & PREPIPED BY ACE HEATERS, LLC. CUSTOMER WILL ONLY NEED TO PLUMB WATER TO BE HEATED, PIPE STEAM AND CONDENSATE LINES, AND BRING ELECTRICITY TO UNIT.
3. DIMENSIONS ARE SUBJECT TO CHANGE. CONSULT FACTORY FOR TIGHT DIMENSIONS.
4. THIS CONFIGURATION CHANGES FOR VALVE SIZE 1/2" TO 2". SEE DETAIL 1 FOR REFERENCE.

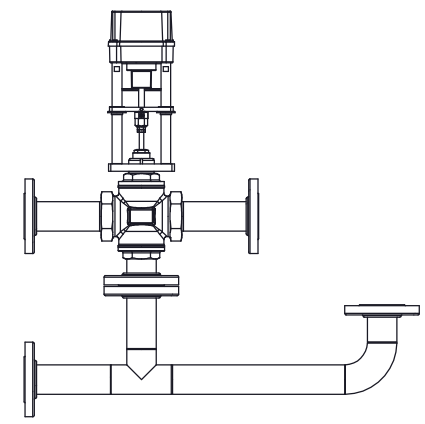
APPROX. EMPTY WT:



FRONT VIEW

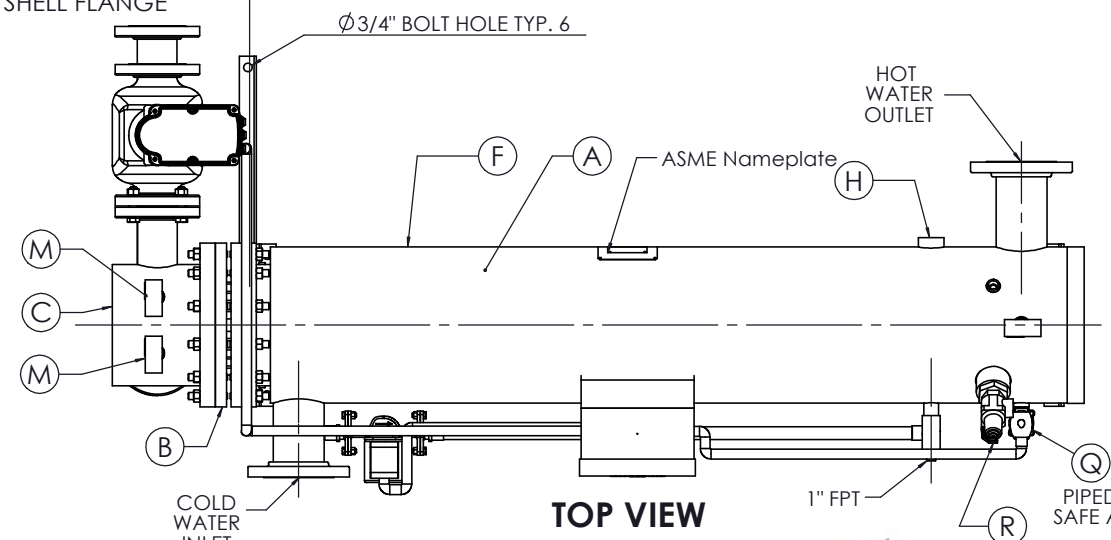


LEFT VIEW

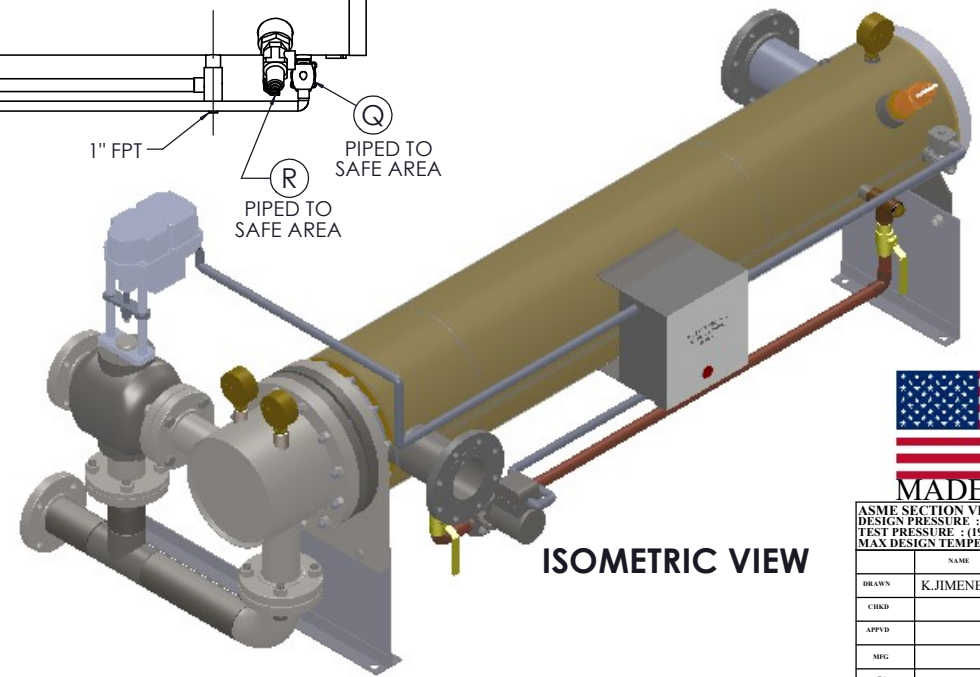


DETAIL 1

CLEARANCE FOR BUNDLE REMOVAL FROM SHELL FLANGE



TOP VIEW



ISOMETRIC VIEW



	CERTIFIED BY	
	Ace Heaters, LLC	
	www.aceheatingllc.com	
	MAXIMUM ALLOWABLE WORKING PRESSURE	
	SHELL	150 PSI @ 210 °F
TUBES	150 PSI @ 370 °F	
MIN. D.M.T.	0 °F @ 150 PSI	
S/N	YEAR BUILT	
MODEL		
CAPACITY	GAL SA. SQFT	
JOB NO.	XXX	



ASME SECTION VIII DIV 1 : DESIGN PRESSURE : (150) psig TEST PRESSURE : (195) psig MAX DESIGN TEMPERATURE : 370 °F		
NAME	DATE	
DRAWN	K.JIMENEZ 04/12/2023	
CHD		
APP'D		
SEC		
QA		

Ace Heaters, LLC
www.aceheaters.com

MATERIAL :	TITLE :	SIHDW - COVER	
FINISH :	MINIPACK SYSTEM-HORIZONTAL DW		
WEIGHT :	WATER 3W- ELEC. VALVE PACKAGE		
UNLESS OTHERWISE SPECIFIED DIMENSIONS ARE IN INCHES		DWG NO.	REV.
TOLERANCE		SIHDWWE-3W	02
DECIMALS	ANGULAR		
.XX ± .05	± 5		
.XXX ± .010	MAX SURF		
SCALE : N/A	S/O #	SHEET : 1 OF 2	

THE INFORMATION CONTAINED WITHIN THIS DRAWING IS PROPRIETARY AND THE SOLE PROPERTY OF ACE HEATERS, LLC. ANY REPRODUCTION IN PART OR AS A WHOLE WITHOUT THE WRITTEN PERMISSION OF ACE HEATERS, LLC IS PROHIBITED.

8

7

6

5

4

3

2

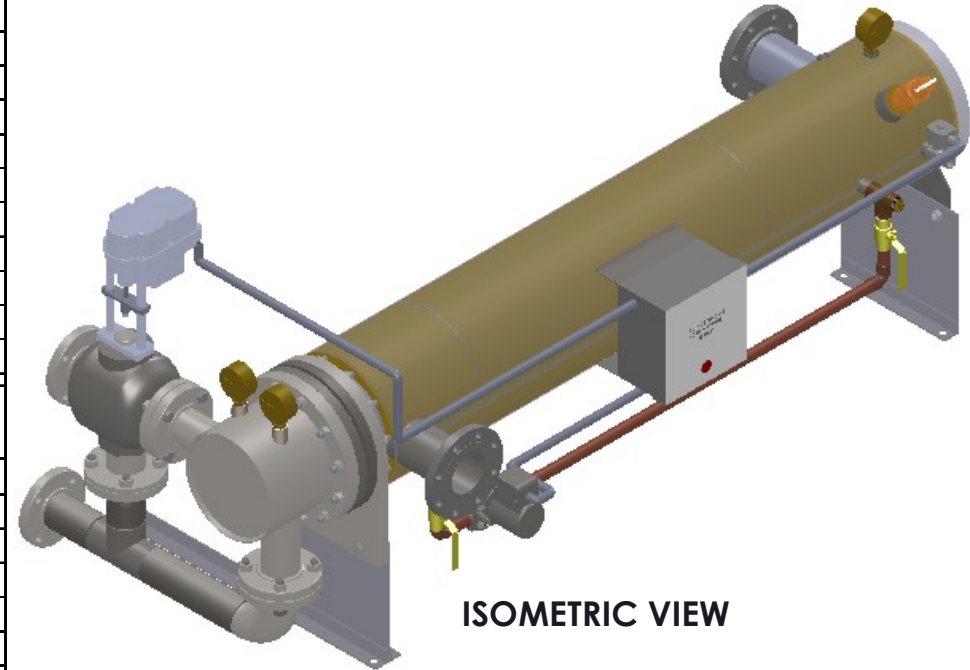
1

SIHDWWE-3W, DW - WATER ELECTRIC 3-WAY MIXING VALVE PACKAGE

NOTES:

- 1/ DIMENSIONS IN INCHES, AND SUBJECT TO CHANGE WITHOUT NOTICE.
- 2/ DIM 'B', 'C', 'D' ARE TO BE APPROXIMATED ONLY, CONSULT FACTORY FOR TIGHT DIMENSIONS.

	MP SIZE	5	6	8	10	12	14	16	
D	ITEMS	10	10 1/2	11 1/2	13 1/2	14 1/2	15 1/2	16 1/2	
	DIMENSION	2	7 11/16	8 3/16	10 1/8	10 13/16	12 1/2	12 1/4	14
		3	14 7/8	15 3/8	18 5/16	22	26 7/8	26 5/8	28 3/8
		4	10 5/8	11 1/4	12 1/8	13 3/8	15 5/8	17 11/16	18 9/16
		5	61 1/2	62	61 3/4	64	62 1/2	72	75 3/4
		6	80 3/16	81 5/16	83 9/16	85 9/16	88 7/16	100 7/8	106 1/2
		7	8 3/4	9 7/8	11 7/8	14 1/2	16 5/8	18 1/2	20
		8	65 7/8	66 7/8	68	69 1/2	70 11/16	80 5/16	83 7/16
		9	11 3/4	11 3/4	12 5/8	13 3/8	14 3/16	18	19 1/2
		10	1 3/8	1 1/2	2 1/16	2 1/2	3 1/16	3 1/8	3 1/4
		11	64	64	64	64	64	75	80
		12	2 1/2	2 1/2	2 1/2	2 1/2	2 1/2	2 1/2	2 1/2
INLET PIPE SIZE		2 1/2 FLG.	2 1/2 FLG.	3 FLG.	4 FLG.	4 FLG.	5 FLG.	6 FLG.	
OUTLET PIPE SIZE		2 1/2 FLG.	2 1/2 FLG.	3 FLG.	4 FLG.	4 FLG.	5 FLG.	6 FLG.	



ISOMETRIC VIEW

C	VALVE SIZE 'A'	ITEM	VALVE SIZE AND OVERALL LOCATION						
1/2"	'B'		12 7/8	13 3/8	16 5/16	20	24 7/8	24 5/8	26 3/8
	'C'		17 5/8	17 7/8	18 7/8	21 3/8	22 7/8	24 7/8	26 7/8
	'D'		30 5/8	31 1/8	34 1/16	37 3/4	42 5/8	42 3/8	44 1/8
3/4"	'B'		12 5/8	13 1/8	16 1/16	19 3/4	24 5/8	24 3/8	26 1/8
	'C'		17 5/8	17 7/8	18 7/8	21 3/8	22 7/8	24 7/8	26 7/8
	'D'		30 5/8	31 1/8	34 1/16	37 3/4	42 5/8	42 3/8	44 1/8
1"	'B'		12 5/8	13 1/8	16 1/16	19 3/4	24 5/8	24 3/8	26 1/8
	'C'		17 5/8	17 7/8	18 7/8	21 3/8	22 7/8	24 7/8	26 7/8
	'D'		30 5/8	31 1/8	34 1/16	37 3/4	42 5/8	42 3/8	44 1/8
1 1/4"	'B'		12 3/8	12 7/8	15 13/16	19 1/2	24 3/8	24 1/8	25 7/8
	'C'		18 1/2	18 3/4	19 3/4	22 1/4	23 3/4	25 3/4	27 3/4
	'D'		31 1/4	31 3/4	34 11/16	38 3/8	43 1/4	43	44 3/4
1 1/2"	'B'		11 7/8	12 3/8	15 5/16	19	23 7/8	23 5/8	25 3/8
	'C'		18 1/2	18 3/4	19 3/4	22 1/4	23 3/4	25 3/4	27 3/4
	'D'		31 1/4	31 3/4	34 11/16	38 3/8	43 1/4	43	44 3/4
2"	'B'		10 7/8	11 3/8	14 5/16	18	22 7/8	22 5/8	24 3/8
	'C'		19 1/4	19 1/2	20 1/2	23	24 1/2	26 1/2	28 1/2
	'D'		31 1/2	32	34 15/16	38 5/8	43 1/2	43 1/4	45
2 1/2"	'B'		10 7/8	11 3/8	14 5/16	18	22 7/8	22 5/8	24 3/8
	'C'		15 3/4	16	17	19 1/2	21	23	25
	'D'		33 7/8	34 3/8	37 5/16	41	45 7/8	45 5/8	47 3/8
3"	'B'			11 1/8	14 1/16	17 3/4	22 5/8	22 3/8	24 1/8
	'C'	N/A		17	18	20 1/2	22	24	26
	'D'			35	37 15/16	41 5/8	46 1/2	46 1/4	48
4"	'B'				13 5/16	17	21 7/8	21 5/8	23 3/8
	'C'	N/A	N/A		21	23 1/2	25	27	29
	'D'				39 1/16	42 3/4	47 5/8	47 3/8	49 1/8
5"	'B'				16	20 7/8	20 5/8	22 3/8	
	'C'	N/A	N/A	N/A	26 1/4	27 3/4	29 3/4	31 3/4	
	'D'				43 1/4	48 1/8	47 7/8	49 5/8	



a nudyne company



Ace Heaters, LLC

www.aceheaters.com

MATERIAL:		TITLE: SIHDW - COVER	
FINISH:		MINIPACK SYSTEM-HORIZONTAL DW	
WEIGHT:		WATER 3W- ELEC. VALVE PACKAGE	
UNLESS OTHERWISE SPECIFIED DIMENSIONS ARE IN INCHES		DWG NO. SIHDWWE-3W	REV. 02
TOLERANCE		SCALE: N/A S/O# SHEET: 2 OF 2	
DECIMALS .XX ± .05			
ANGULAR .XXX ± .010			
MAX SURF			

THE INFORMATION CONTAINED WITHIN THIS DRAWING IS PROPRIETARY AND THE SOLE PROPERTY OF ACE HEATERS, LLC. ANY REPRODUCTION IN PART OR AS A WHOLE WITHOUT THE WRITTEN PERMISSION OF ACE HEATERS, LLC IS PROHIBITED.