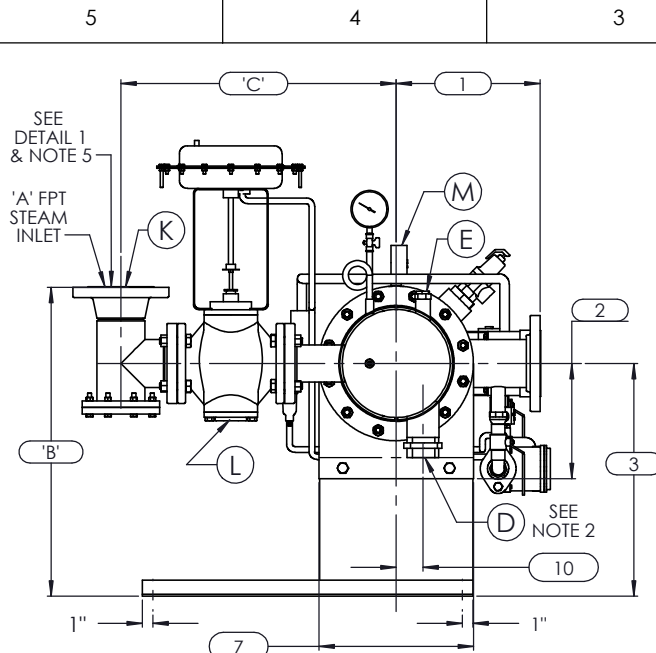


FRONT VIEW

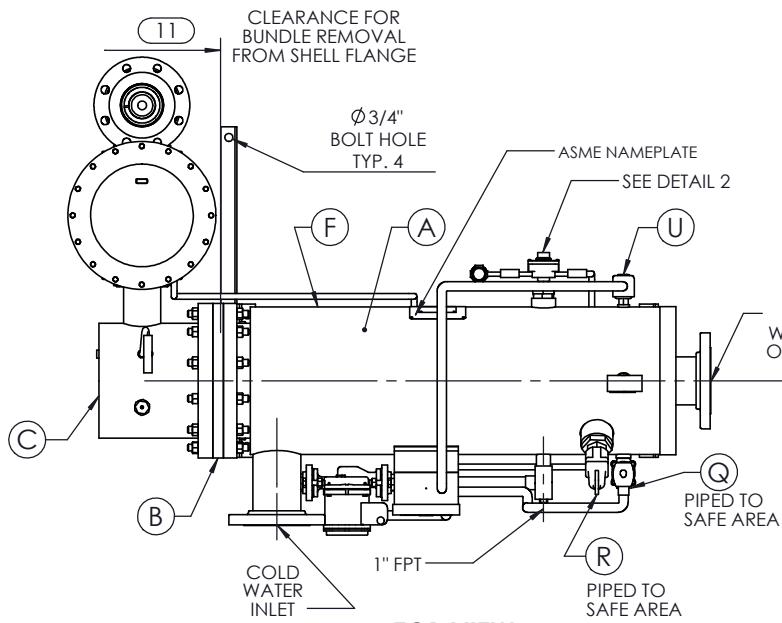
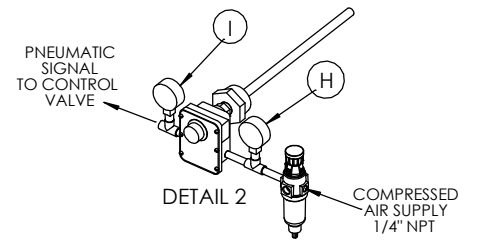


LEFT VIEW

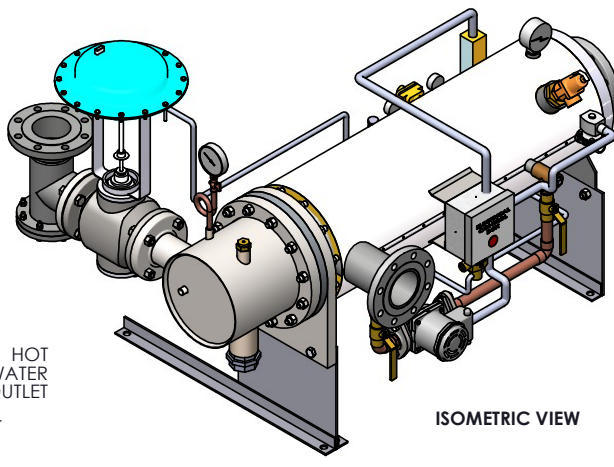
NOTES:

1. REFER TO PRODUCT SPECIFICATION FOR DESCRIPTION OF LETTERED ITEMS.
2. **CONDENSATE:**
CONDENSATE IS TO BE PIPED FROM HEATER WITHOUT LIFTS TO A VENTED RECEIVER OR DRAIN BELOW THE ELEVATION OF THE HEATER'S CONDENSATE OUTLET.
3. **INSTALLATION:**
ALL COMPONENTS SHOWN HERE ARE PREWIRED & PREPARED BY ACE HEATERS, LLC. CUSTOMER WILL ONLY NEED TO PLUMB WATER TO BE HEATED, PIPE STEAM AND CONDENSATE LINES, AND BRING ELECTRICITY TO UNIT.
4. DIMENSIONS ARE SUBJECT TO CHANGE. CONSULT FACTORY FOR TIGHT DIMENSIONS.
5. THIS CONFIGURATION CHANGES FOR VALVE SIZE 1/2" TO 2". SEE DETAIL 1 FOR REFERENCE.

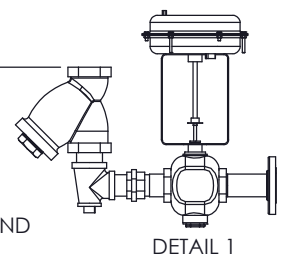
APPROX. EMPTY WT:



TOP VIEW



ISOMETRIC VIEW



DETAIL 1



	CERTIFIED BY	Ace Heaters, LLC www.aceheatingllc.com
	MAXIMUM ALLOWABLE WORKING PRESSURE	
	SHELL 150 PSI @ 210 °F	
	TUBES 150 PSI @ 370 °F	
MIN. D.M.T. 0 °F @ 150 PSI		
S/N	YEAR BUILT	
MODEL		
CAPACITY	GAL SA.	SOFT
JOB NO.		XXX



ASME SECTION VIII DIV 1: DESIGN PRESSURE - (150) psig TEST PRESSURE - (195) psig MAX DESIGN TEMPERATURE - 370 °F	
NAME	DATE
DRAWN K. JIMENEZ	04/12/2023
CHKD	
APPVD	
MFG	
QA	

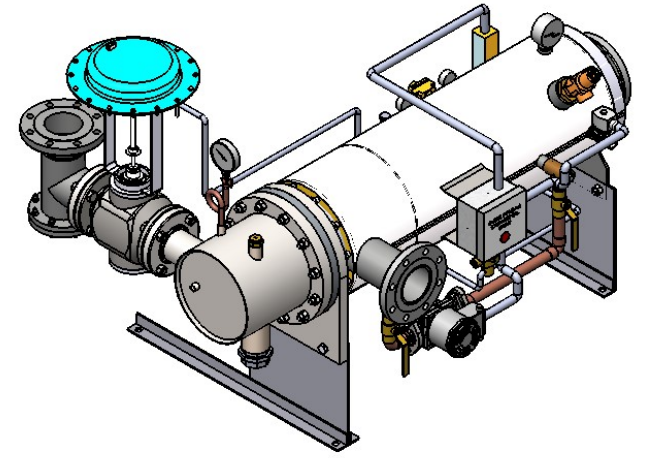
Ace Heaters, LLC www.aceheaters.com	
MATERIAL:	TITLE: SIHSW-COVER
FINISH:	MINIPACK SYSTEM-HORIZONTAL-SW
WEIGHT:	STEAM-PNEUMATIC OPERATED VALVE PACKAGE
UNLESS OTHERWISE SPECIFIED DIMENSIONS ARE IN INCHES TOLERANCE	DWG NO. SIHSWSA
DECIMALS .XX ± .05	REV. 02
ANGULAR ± 3°	SCALE: N/A
MAX SURF ± .010	S/O#
	SHEET 1 OF 2

THE INFORMATION CONTAINED WITHIN THIS DRAWING IS PROPRIETARY AND THE SOLE PROPERTY OF ACE HEATERS, LLC. ANY REPRODUCTION IN PART OR AS A WHOLE WITHOUT THE WRITTEN PERMISSION OF ACE HEATERS, LLC IS PROHIBITED.

SIHSWSA, SW - STEAM - PNEUMATIC VALVE PACKAGE SIZE AND LOCATION

		4	5	6	8	8L	10	10L	12	12L	14	14L	16	16L	
DIMENSION	ITEMS	1	11 1/2	12	11 9/16	11 9/16	13 7/16	13 7/16	14 7/16	14 7/16	15 3/4	15 3/4	17 5/8	17 5/8	
		2	6 5/16	7 11/16	8 3/16	10 1/8	10 1/8	10 13/16	10 13/16	12 1/2	12 1/2	12 1/4	14	14	
		3	13 1/2	14 7/8	15 3/8	18 5/16	18 5/16	22 3/16	22 3/16	26 7/8	26 7/8	26 5/8	28 3/8	28 3/8	
		4	9 5/8	9 5/8	10 7/8	10 7/8	10 7/8	11 13/16	11 13/16	15 3/4	15 3/4	16 1/8	16 3/8	17 7/8	17 7/8
		5	36	30	36 3/4	31 3/4	37 3/4	32 1/2	38 1/2	33 1/4	45 1/4	40 1/2	55 3/4	50 1/2	65 3/4
		6	56	49	57 3/8	53 7/8	59 7/8	57	63	63 15/16	75 15/16	73 1/16	88 5/16	88 1/16	102 1/16
		7	7 5/8	8 3/4	9 7/8	11 7/8	11 7/8	14 1/2	14 1/2	16 5/8	16 5/8	18 1/2	18 1/2	20	20
		8	42 3/8	33 1/4	41 5/8	36 3/4	42 3/4	37 3/8	43 3/8	38 3/8	50 3/8	46 1/8	61 3/8	58 5/8	72 5/8
		9	10 5/8	10 3/4	10 3/4	11 5/8	11 5/8	13 5/8	13 5/8	18 15/16	18 15/16	19 13/16	19 13/16	22 5/16	22 5/16
		10	1	1 3/8	1 1/2	2 1/16	2 1/16	2 1/2	2 1/2	3 1/16	3 1/16	3 1/8	3 1/4	3 1/4	3 1/4
		11	37	31	38	33	39	34	40	35	47	42	57	53	67
		12	2 1/2	2 1/2	2 1/2	2 1/2	2 1/2	2 1/2	2 1/2	2 1/2	2 1/2	2 1/2	2 1/2	2 1/2	2 1/2
INLET PIPE SIZE		2 THR.	2 1/2	2 1/2	3 FLG.	3 FLG.	4 FLG.	4 FLG.	4 FLG.	4 FLG.	5 FLG.	5 FLG.	6 FLG.	6 FLG.	
OUTLET PIPE SIZE		2 THR.	2 1/2	2 1/2	3 FLG.	3 FLG.	4 FLG.	4 FLG.	4 FLG.	4 FLG.	5 FLG.	5 FLG.	6 FLG.	6 FLG.	

		VALVE SIZE AND OVERALL LOCATION													
VALVE SIZE	ITEM														
1/2"	'A'	3/4													
	'B'	18 11/16	20 1/16	20 9/16	23 1/2	23 1/2	27 3/8	27 3/8	32 1/16	32 1/16	31 13/16	31 13/16	33 9/16	33 9/16	
	'C'	19 13/16	20 5/16	20 9/16	21 9/16	21 9/16	24 1/16	24 1/16	25 9/16	25 9/16	27 9/16	27 9/16	29 9/16	29 9/16	
	'D'	29 5/16	30 11/16	31 3/16	34 1/8	34 1/8	38	38	42 11/16	42 11/16	42 7/16	42 7/16	44 3/16	44 3/16	
3/4"	'A'	1													
	'B'	19 3/4	21 1/8	21 5/8	24 9/16	24 9/16	28 7/16	28 7/16	33 1/8	33 1/8	32 7/8	32 7/8	34 5/8	34 5/8	
	'C'	20 13/16	21 5/16	21 9/16	22 9/16	22 9/16	25 1/16	25 1/16	26 9/16	26 9/16	28 9/16	28 9/16	30 9/16	30 9/16	
	'D'	29 5/16	30 11/16	31 3/16	34 1/8	34 1/8	38	38	42 11/16	42 11/16	42 7/16	42 7/16	44 3/16	44 3/16	
1"	'A'	1 1/4													
	'B'	20 3/16	21 9/16	22 1/16	25	25	28 7/8	28 7/8	33 9/16	33 9/16	33 5/16	33 5/16	35 1/16	35 1/16	
	'C'	21 5/8	22 1/8	22 3/8	23 3/8	23 3/8	25 7/8	25 7/8	27 3/8	27 3/8	29 3/8	29 3/8	31 3/8	31 3/8	
	'D'	29 5/16	30 11/16	31 3/16	34 1/8	34 1/8	38	38	42 11/16	42 11/16	42 7/16	42 7/16	44 3/16	44 3/16	
1 1/4"	'A'	1 1/2													
	'B'	21 3/16	22 9/16	23 1/16	26	26	29 7/8	29 7/8	34 9/16	34 9/16	34 5/16	34 5/16	36 1/16	36 1/16	
	'C'	20 15/16	21 7/16	21 11/16	22 11/16	22 11/16	25 3/16	25 3/16	26 11/16	26 11/16	28 11/16	28 11/16	30 11/16	30 11/16	
	'D'	29 5/16	30 11/16	31 3/16	34 1/8	34 1/8	38	38	42 11/16	42 11/16	42 7/16	42 7/16	44 3/16	44 3/16	
1 1/2"	'A'	2													
	'B'	22 3/4	24 1/8	24 5/8	27 9/16	27 9/16	31 7/16	31 7/16	36 1/8	36 1/8	35 7/8	35 7/8	37 5/8	37 5/8	
	'C'	21 9/16	22 1/16	22 5/16	23 5/16	23 5/16	25 13/16	25 13/16	27 5/16	27 5/16	29 5/16	29 5/16	31 5/16	31 5/16	
	'D'	30 1/16	31 7/16	31 15/16	34 7/8	34 7/8	38 3/4	38 3/4	43 7/16	43 7/16	43 3/16	43 3/16	44 15/16	44 15/16	
2"	'A'	2 1/2													
	'B'	24 3/4	26 1/8	26 5/8	29 9/16	29 9/16	33 7/16	33 7/16	38 1/8	38 1/8	37 7/8	37 7/8	39 5/8	39 5/8	
	'C'	23 3/4	24 1/4	24 1/2	25 1/2	25 1/2	28	28	29 1/2	29 1/2	31 1/2	31 1/2	33 1/2	33 1/2	
	'D'	31 3/4	33 1/8	33 5/8	36 9/16	36 9/16	40 7/16	40 7/16	45 1/8	45 1/8	44 7/8	44 7/8	46 5/8	46 5/8	
2 1/2"	'A'	3													
	'B'	21	21 1/2	24 7/16	24 7/16	28 5/16	28 5/16	33	33	32 3/4	32 3/4	34 1/2	34 1/2		
	'C'	N/A	20 1/4	20 1/2	21 1/2	21 1/2	24	24	25 1/2	25 1/2	27 1/2	27 1/2	29 1/2	29 1/2	
	'D'	33 7/8	34 3/8	37 5/16	37 5/16	41 3/16	41 3/16	45 7/8	45 7/8	45 5/8	45 5/8	47 3/8	47 3/8		
3"	'A'	4													
	'B'	N/A	N/A	22 9/16	25 1/2	25 1/2	29 3/8	29 3/8	34 1/16	34 1/16	33 13/16	33 13/16	35 9/16	35 9/16	
	'C'	N/A	N/A	22 5/16	23 5/16	23 5/16	25 13/16	25 13/16	27 5/16	27 5/16	29 5/16	29 5/16	31 5/16	31 5/16	
	'D'	N/A	N/A	36 1/4	39 3/16	39 3/16	43 1/16	43 1/16	47 3/4	47 3/4	47 1/2	47 1/2	49 1/4	49 1/4	
4"	'A'	6													
	'B'	N/A	N/A	N/A	27 7/16	27 7/16	31 5/16	31 5/16	36	36	35 3/4	35 3/4	37 1/2	37 1/2	
	'C'	N/A	N/A	N/A	27 3/16	27 3/16	29 11/16	29 11/16	31 3/16	31 3/16	33 3/16	33 3/16	35 3/16	35 3/16	
	'D'	N/A	N/A	N/A	41 3/16	41 3/16	45 1/16	45 1/16	49 3/4	49 3/4	49 1/2	49 1/2	51 1/4	51 1/4	
5"	'A'	6													
	'B'	N/A	N/A	N/A	N/A	N/A	31 5/16	31 5/16	36	36	35 3/4	35 3/4	37 1/2	37 1/2	
	'C'	N/A	N/A	N/A	N/A	N/A	33 5/16	33 5/16	34 13/16	34 13/16	36 13/16	36 13/16	38 13/16	38 13/16	
	'D'	N/A	N/A	N/A	N/A	N/A	45 1/16	45 1/16	49 3/4	49 3/4	49 1/2	49 1/2	51 1/4	51 1/4	



ISOMETRIC VIEW

NOTES:

- 1/ DIMENSIONS IN INCHES, AND SUBJECT TO CHANGE WITHOUT NOTICE.
- 2/ DIM 'B', 'C', 'D' ARE TO BE APPROXIMATED ONLY, CONSULT FACTORY FOR TIGHT DIMENSIONS.



a nudyne company

Ace Heaters, LLC
www.aceheaters.com



ASME SECTION VIII DIV 1 : DESIGN PRESSURE : (150) psig TEST PRESSURE : (195) psig MAX DESIGN TEMPERATURE : 370 °F	
DRAWN	K. JIMENEZ
CHKD	
APPVD	
MFG	
QA	

MATERIAL :	TITLE :	SIHSW-COVER
FINISH :	MINIPACK SYSTEM-HORIZONTAL-SW	
WEIGHT :	STEAM-PNEUMATIC OPERATED VALVE PACKAGE	
UNLESS OTHERWISE SPECIFIED DIMENSIONS ARE IN INCHES TOLERANCE	DWG NO.	SIHSWSA-DIM
DECIMALS .XX ± .05 ANGULAR ± 3 MAX SURF	REV.	02
SCALE : N/A	S/O #	SHEET : 2 OF 2

THE INFORMATION CONTAINED WITHIN THIS DRAWING IS PROPRIETARY AND THE SOLE PROPERTY OF ACE HEATERS, LLC. ANY REPRODUCTION IN PART OR AS A WHOLE WITHOUT THE WRITTEN PERMISSION OF ACE HEATERS, LLC IS PROHIBITED.