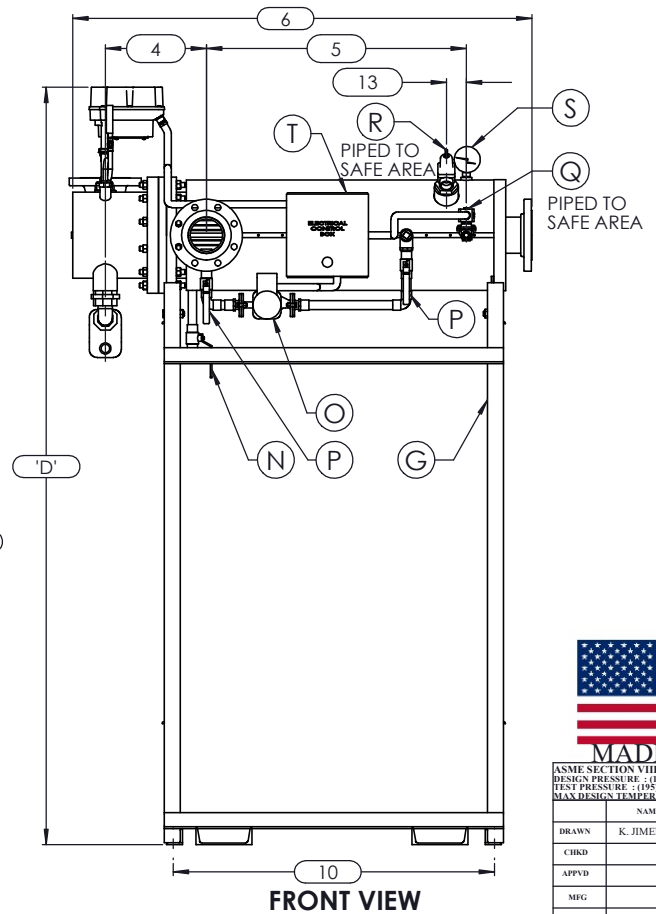
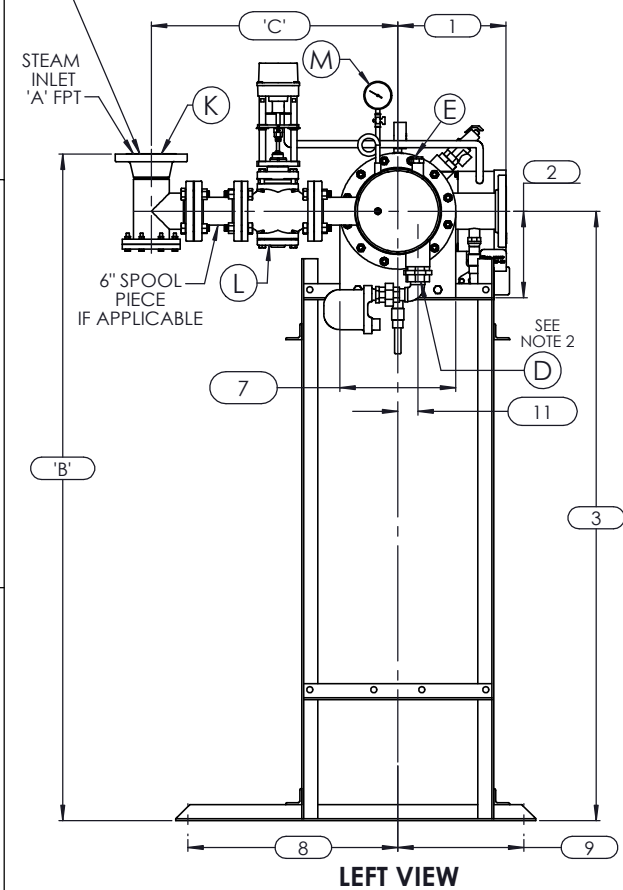
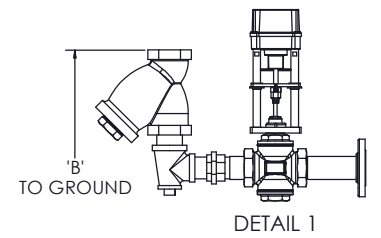


NOTES:

1. REFER TO PRODUCT SPECIFICATION FOR DESCRIPTION OF LETTERED ITEMS.
2. **CONDENSATE:**
CONDENSATE IS TO BE PIPED FROM HEATER WITHOUT LIFTS TO A VENTED RECEIVER OR DRAIN BELOW THE ELEVATION OF THE HEATER'S CONDENSATE OUTLET.
3. **INSTALLATION:**
ALL COMPONENTS SHOWN HERE ARE PREWIRED & PREPARED BY ACE HEATERS, LLC. CUSTOMER WILL ONLY NEED TO PLUMB WATER TO BE HEATED, PIPE STEAM AND CONDENSATE LINES, AND BRING ELECTRICITY TO UNIT.
4. DIMENSIONS ARE SUBJECT TO CHANGE. CONSULT FACTORY FOR TIGHT DIMENSIONS.
5. THIS CONFIGURATION CHANGES FOR VALVE SIZE 1/2" TO 2". SEE DETAIL 1 FOR REFERENCE.

APPROX. EMPTY WT:

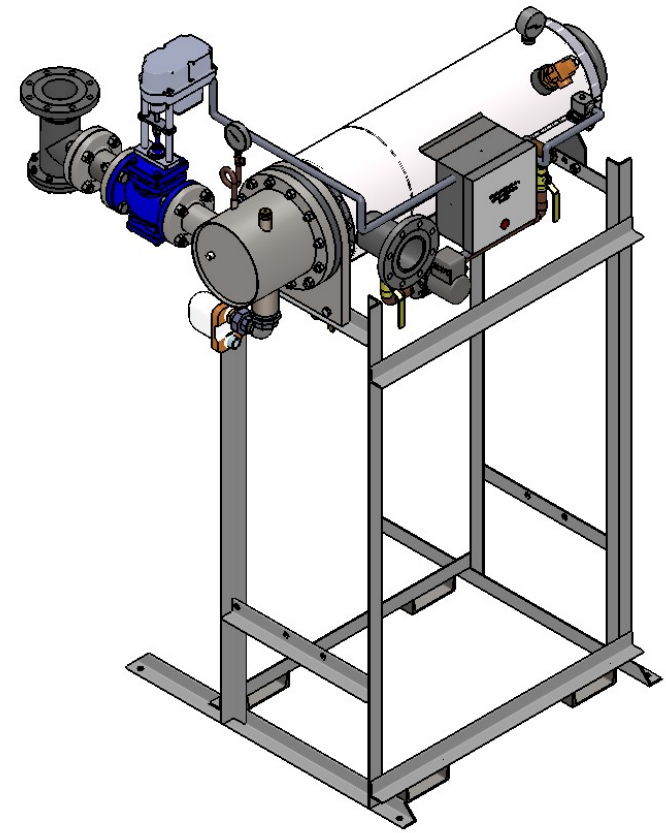


	CERTIFIED BY	Ace Heaters, LLC	
		www.aceheatingllc.com	
	MAXIMUM ALLOWABLE WORKING PRESSURE	SHELL	150 PSI @ 210 °F
	TUBES	150 PSI @ 370 °F	
MIN. D.M.T.	0 °F @ 150 PSI	S/N	YEAR BUILT
MODEL			
CAPACITY	GAL SA.	SQFT	
JOB NO.	XXX		

<p>MADE IN USA</p>		<p>Ace Heaters, LLC</p> <p>www.aceheaters.com</p>	
MATERIAL:		TITLE: SIHSW-COVER	
FINISH:		MINIPACK SYSTEM-HORIZONTAL-SW	
WEIGHT:		STEAM ELEC. OPERATED VALVE	
UNLESS OTHERWISE SPECIFIED DIMENSIONS ARE IN INCHES TOLERANCE		PACKAGE - SINGLE UNIT ON DUAL RACK	
DRAWN	K. JIMENEZ 04/12/2023	DWG NO.	SIHSWSE-1-DR
CHKD		REV.	02
APPVD		SCALE: N/A	S/O#
MFG		SHEET: 1 OF 2	
QA			

ASME SECTION VIII DIV 1:	
DESIGN PRESSURE	-(150) psig
TEST PRESSURE	-(195) psig
MAX DESIGN TEMPERATURE	-(370) °F
NAME	DATE
DRAWN	K. JIMENEZ 04/12/2023
CHKD	
APPVD	
MFG	
QA	

SIHSWSE, SW- STEAM ELECTRIC 2-WAY VALVE PACKAGE SIZE AND LOCATION: SINGLE UNIT ON RACK														
MP SIZE	4	5	6	8	8L	10	10L	12	12L	14	14L	16	16L	
DIMENSION	1	9 1/2	11 1/2	12	11 9/16	11 9/16	13 7/16	13 7/16	14 7/16	14 7/16	15 3/4	15 3/4	17 5/8	17 5/8
	2	6 5/16	7 11/16	8 3/16	10 1/8	10 1/8	10 13/16	10 13/16	12 1/2	12 1/2	12 1/4	12 1/4	14	14
	3	58 9/16	59 15/16	60 7/16	62 3/8	62 3/8	76 1/16	76 1/16	77 3/4	77 3/4	77 1/2	77 1/2	79 1/4	79 1/4
	4	9 5/8	9 5/8	10 1/8	10 7/8	10 7/8	12 1/2	11 13/16	15 3/4	15 3/4	16 1/8	16 3/8	17 7/8	17 7/8
	5	36	30	36 3/4	31 3/4	37 3/4	32 1/2	38 1/2	33 1/4	45 1/4	40 1/2	55 3/4	50 1/2	65 3/4
	6	56	49	57 3/8	53 7/8	59 7/8	57	63	63 15/16	75 15/16	73 1/16	88 5/16	88 1/16	102 1/16
	7	7 5/8	8 3/4	9 7/8	11 7/8	11 7/8	14 1/2	14 1/2	16 5/8	16 5/8	18 1/2	18 1/2	20	20
	8	26 1/2	26 1/2	26 1/2	26 1/2	26 1/2	26 1/2	26 1/2	26 1/2	26 1/2	26 1/2	26 1/2	26 1/2	26 1/2
	9	15 1/2	15 1/2	15 1/2	15 1/2	15 1/2	15 1/2	15 1/2	15 1/2	15 1/2	15 1/2	15 1/2	15 1/2	15 1/2
	10	42 3/4	35 3/4	44 1/8	39 1/8	44 7/8	39 3/4	45 3/4	42	54 1/4	49 3/4	65	62 1/4	76 1/4
	11	1	1 3/8	1 1/2	2 1/16	2 1/16	2 1/2	2 1/2	3 1/16	3 1/16	3 1/8	3 1/8	3 1/4	3 1/4
	12	37	31	38	33	39	34	40	35	47	42	57	53	67
	13	2 1/2	2 1/2	2 1/2	2 1/2	2 1/2	2 1/2	2 1/2	2 1/2	2 1/2	2 1/2	2 1/2	2 1/2	2 1/2
INLET PIPE SIZE		2 THR.	2 1/2	2 1/2	3 FLG.	3 FLG.	4 FLG.	4 FLG.	4 FLG.	4 FLG.	5 FLG.	5 FLG.	6 FLG.	6 FLG.
OUTLET PIPE SIZE		2 THR.	2 1/2	2 1/2	3 FLG.	3 FLG.	4 FLG.	4 FLG.	4 FLG.	4 FLG.	5 FLG.	5 FLG.	6 FLG.	6 FLG.
VALVE SIZE AND OVERALL LOCATION														
1/2"	'A'							3/4						
	'B'	63 3/4	63 7/8	64 3/8	66 5/16	66 5/16	80	80	81 11/16	81 11/16	81 7/16	81 7/16	83 3/16	83 3/16
	'C'	18	18 1/2	18 3/4	19 3/4	19 3/4	22 1/4	22 1/4	23 3/4	23 3/4	25 3/4	25 3/4	27 3/4	27 3/4
	'D'	74 5/16	75 11/16	76 3/16	78 1/8	78 1/8	91 13/16	91 13/16	93 1/2	93 1/2	93 1/4	93 1/4	95	95
3/4"	'A'							1						
	'B'	64 13/16	66 3/16	66 11/16	68 5/8	68 5/8	82 5/16	82 5/16	84	84	83 3/4	83 3/4	85 1/2	85 1/2
	'C'	18 11/16	19 3/16	19 7/16	20 7/16	20 7/16	22 15/16	22 15/16	24 7/16	24 7/16	26 7/16	26 7/16	28 7/16	28 7/16
	'D'	74 5/16	75 11/16	76 3/16	78 1/8	78 1/8	91 13/16	91 13/16	93 1/2	93 1/2	93 1/4	93 1/4	95	95
1"	'A'							1 1/4						
	'B'	65 1/4	66 5/8	67 1/8	69 1/16	69 1/16	82 3/4	82 3/4	84 7/16	84 7/16	84 3/16	84 3/16	85 15/16	85 15/16
	'C'	19 7/16	19 15/16	20 3/16	21 3/16	21 3/16	23 11/16	23 11/16	25 3/16	25 3/16	27 3/16	27 3/16	29 3/16	29 3/16
	'D'	74 5/16	75 11/16	76 3/16	78 1/8	78 1/8	91 13/16	91 13/16	93 1/2	93 1/2	93 1/4	93 1/4	95	95
1 1/4"	'A'							1 1/2						
	'B'	66 1/4	67 5/8	68 1/8	70 1/16	70 1/16	83 3/4	83 3/4	85 7/16	85 7/16	85 3/16	85 3/16	86 15/16	86 15/16
	'C'	20 15/16	21 7/16	21 11/16	22 11/16	22 11/16	25 3/16	25 3/16	26 11/16	26 11/16	28 11/16	28 11/16	30 11/16	30 11/16
	'D'	74 15/16	76 5/16	76 13/16	78 3/4	78 3/4	92 7/16	92 7/16	94 1/8	94 1/8	93 7/8	93 7/8	95 5/8	95 5/8
1 1/2"	'A'							2						
	'B'	67 13/16	69 3/16	69 11/16	71 5/8	71 5/8	85 5/16	85 5/16	87	87	86 3/4	86 3/4	88 1/2	88 1/2
	'C'	21 5/8	22 1/8	22 3/8	23 3/8	23 3/8	25 7/8	25 7/8	27 3/8	27 3/8	29 3/8	29 3/8	31 3/8	31 3/8
	'D'	74 15/16	76 5/16	76 13/16	78 3/4	78 3/4	92 7/16	92 7/16	94 1/8	94 1/8	93 7/8	93 7/8	95 5/8	95 5/8
2"	'A'							2 1/2						
	'B'	69 13/16	71 3/16	71 11/16	73 5/8	73 5/8	87 5/16	87 5/16	89	89	88 3/4	88 3/4	90 1/2	90 1/2
	'C'	23 1/2	24	24 1/4	25 1/4	25 1/4	27 3/4	27 3/4	29 1/4	29 1/4	31 1/4	31 1/4	33 1/4	33 1/4
	'D'	75 3/16	76 9/16	77 1/16	79	79	92 11/16	92 11/16	94 3/8	94 3/8	94 1/8	94 1/8	95 7/8	95 7/8
2 1/2"	'A'							3						
	'B'	N/A	66 1/16	66 9/16	68 1/2	68 1/2	82 3/16	82 3/16	83 7/8	83 7/8	83 5/8	83 5/8	85 3/8	85 3/8
	'C'		27 7/8	28 1/8	29 1/8	29 1/8	31 5/8	31 5/8	33 1/8	33 1/8	35 1/8	35 1/8	37 1/8	37 1/8
	'D'		78 15/16	79 7/16	81 3/8	81 3/8	95 1/16	95 1/16	96 3/4	96 3/4	96 1/2	96 1/2	98 1/4	98 1/4
3"	'A'							4						
	'B'			67 5/8	69 9/16	69 9/16	83 1/4	83 1/4	84 15/16	84 15/16	84 11/16	84 11/16	86 7/16	86 7/16
	'C'	N/A	N/A	29 7/8	30 7/8	30 7/8	33 3/8	33 3/8	34 7/8	34 7/8	36 7/8	36 7/8	38 7/8	38 7/8
	'D'			80 1/16	82	82	95 11/16	95 11/16	97 3/8	97 3/8	97 1/8	97 1/8	98 7/8	98 7/8
4"	'A'							6						
	'B'				71 1/2	71 1/2	85 3/16	85 3/16	86 7/8	86 7/8	86 5/8	86 5/8	88 3/8	88 3/8
	'C'	N/A	N/A	N/A	35 1/8	35 1/8	37 5/8	37 5/8	39 1/8	39 1/8	41 1/8	41 1/8	43 1/8	43 1/8
	'D'				83 1/8	83 1/8	96 13/16	96 13/16	98 1/2	98 1/2	98 1/4	98 1/4	100	100
5"	'A'							6						
	'B'						85 3/16	85 3/16	86 7/8	86 7/8	86 5/8	86 5/8	88 3/8	88 3/8
	'C'	N/A	N/A	N/A	N/A	N/A	41 1/8	41 1/8	42 5/8	42 5/8	44 5/8	44 5/8	46 5/8	46 5/8
	'D'						97 5/16	97 5/16	99	99	98 3/4	98 3/4	100 1/2	100 1/2



ISOMETRIC VIEW



a nudyne company



Ace Heaters, LLC
www.aceheaters.com

NOTES:
1/ DIMENSIONS IN INCHES, AND SUBJECT TO CHANGE WITHOUT NOTICE.
2/ DIM 'B', 'C', 'D' ARE TO BE APPROXIMATED ONLY, CONSULT FACTORY FOR TIGHT DIMENSIONS.

MATERIAL:		TITLE: SIHSW-COVER	
FINISH:		MINIPACK SYSTEM-HORIZONTAL-SW	
WEIGHT:		STEAM ELECT. OPERATED VALVE PACKAGE - SINGLE UNIT ON DUAL RACK	
UNLESS OTHERWISE SPECIFIED DIMENSIONS ARE IN INCHES TOLERANCE		DWG NO. SIHSWSE-1-DR-DIM	REV. 02
DECIMALS .XX ± .05	ANGULAR ± 3°	SCALE: N/A	S/O #
MAX SURF			SHEET: 2 OF 2

ASME SECTION VIII DIV 1:	NAME	DATE
DESIGN PRESSURE - (150) psig	K. JIMENEZ	04/12/2023
TEST PRESSURE - (195) psig		
MAX DESIGN TEMPERATURE - 370 °F		
DRAWN		
CHKD		
APPVD		
MFG		
QA		

THE INFORMATION CONTAINED WITHIN THIS DRAWING IS PROPRIETARY AND THE SOLE PROPERTY OF ACE HEATERS, LLC. ANY REPRODUCTION IN PART OR AS A WHOLE WITHOUT THE WRITTEN PERMISSION OF ACE HEATERS, LLC IS PROHIBITED.