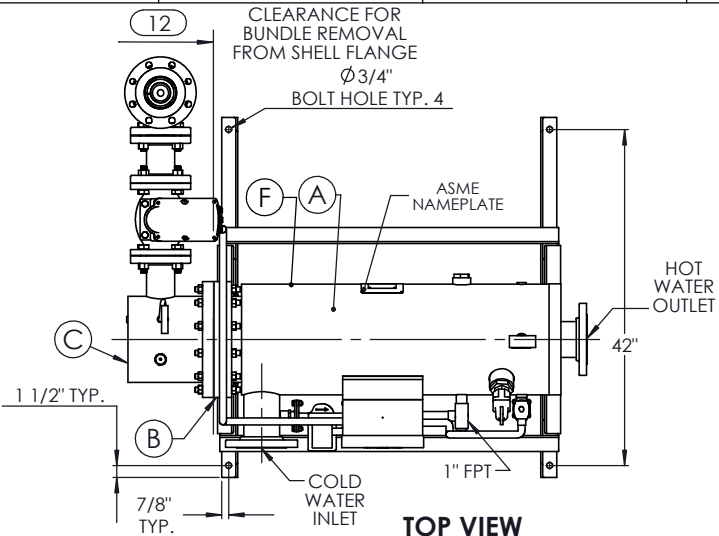
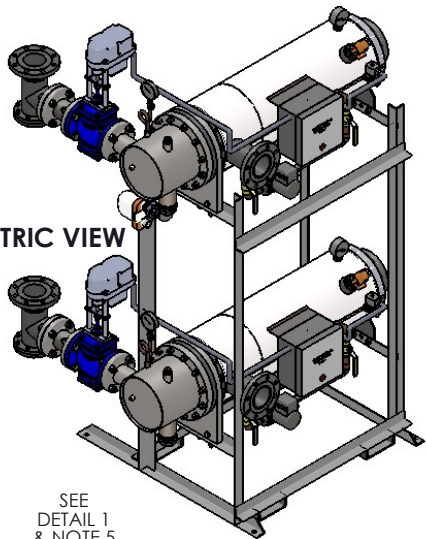


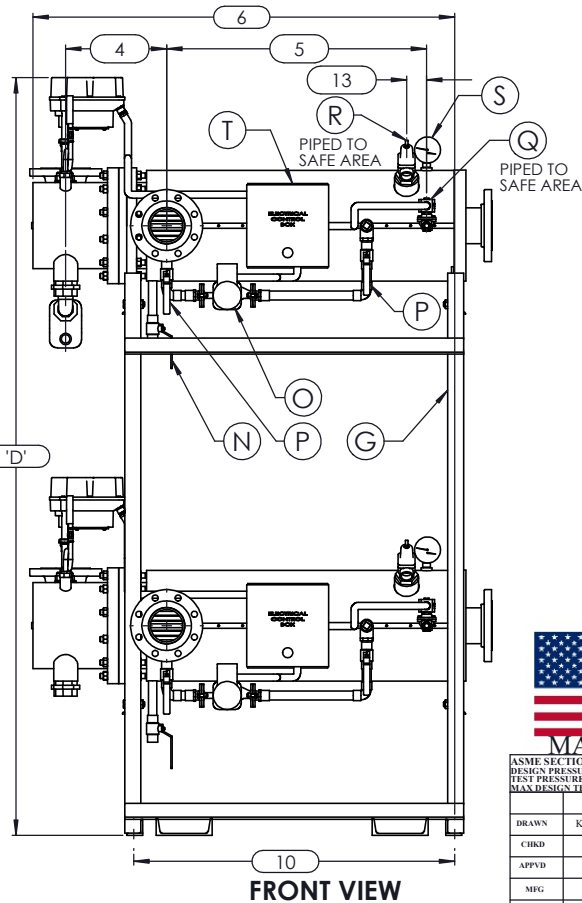
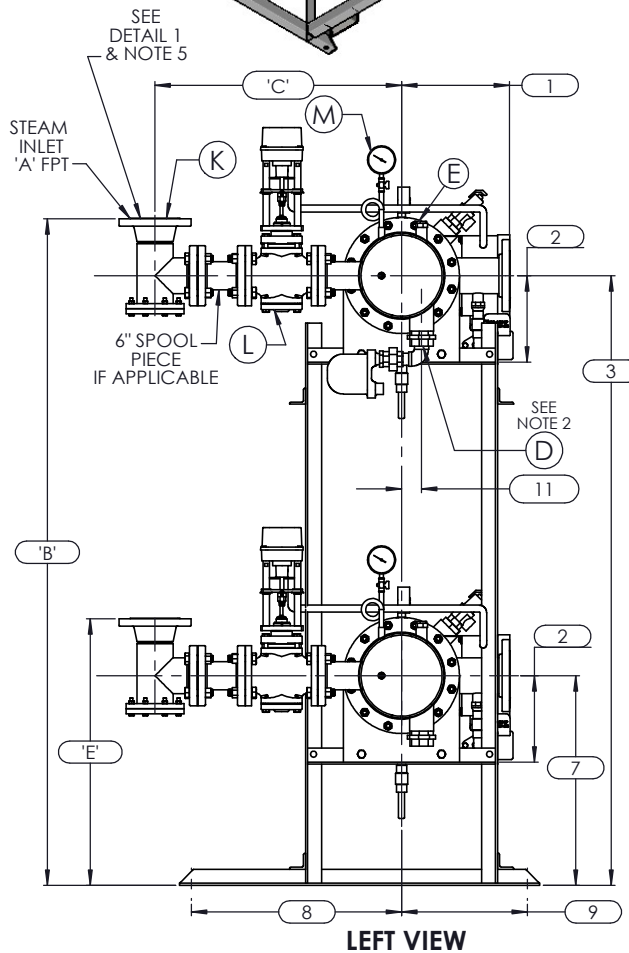
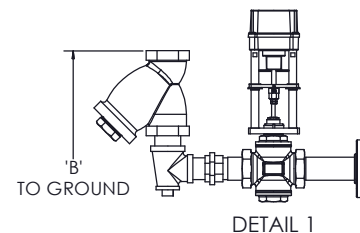
ISOMETRIC VIEW



NOTES:

- REFER TO PRODUCT SPECIFICATION FOR DESCRIPTION OF LETTERED ITEMS.
- CONDENSATE:
CONDENSATE IS TO BE PIPED FROM HEATER WITHOUT LIFTS TO A VENTED RECEIVER OR DRAIN BELOW THE ELEVATION OF THE HEATER'S CONDENSATE OUTLET.
- INSTALLATION:
ALL COMPONENTS SHOWN HERE ARE PREWIRED & PREPIPED BY ACE HEATERS, LLC. CUSTOMER WILL ONLY NEED TO PLUMB WATER TO BE HEATED, PIPE STEAM AND CONDENSATE LINES, AND BRING ELECTRICITY TO UNIT.
- DIMENSIONS ARE SUBJECT TO CHANGE. CONSULT FACTORY FOR TIGHT DIMENSIONS.
- THIS CONFIGURATION CHANGES FOR VALVE SIZE 1/2" TO 2". SEE DETAIL 1 FOR REFERENCE.

APPROX. EMPTY WT:



 U	CERTIFIED BY Ace Heaters, LLC www.aceheatingllc.com
	MAXIMUM ALLOWABLE WORKING PRESSURE SHELL 150 PSI @ 210 °F TUBES 150 PSI @ 370 °F
	MIN. D.M.T. 0 °F @ 150 PSI S/N _____ YEAR BUILT _____
	MODEL _____ CAPACITY _____ GAL SA. _____ SQFT JOB NO. _____ XXX



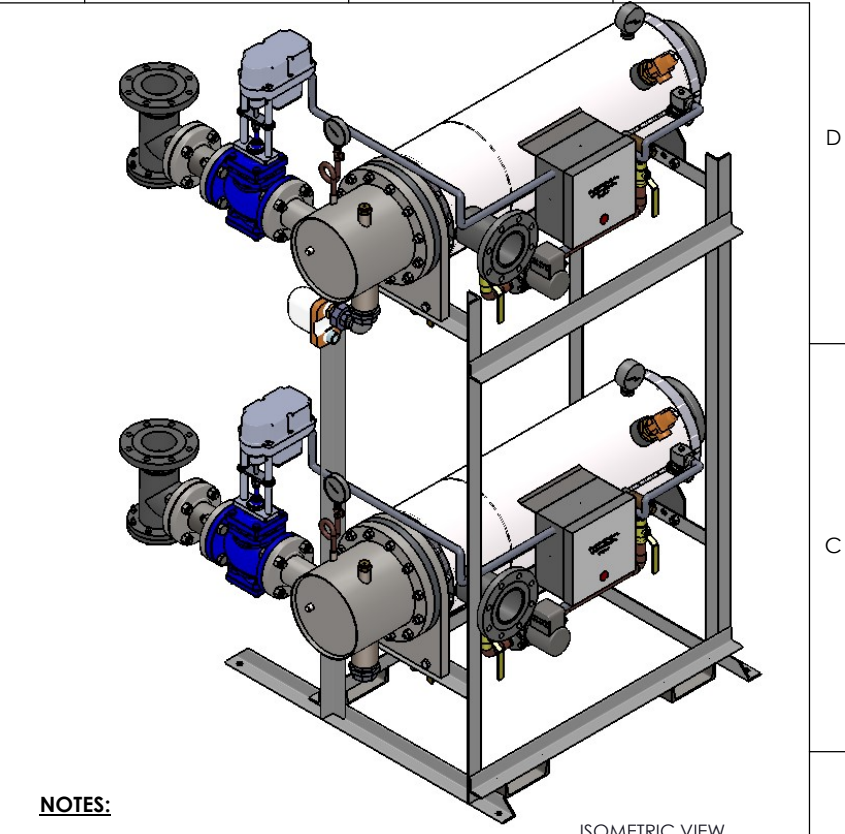
ASME SECTION VIII DIV 1:
 DESIGN PRESSURE - (150) psig
 TEST PRESSURE - (195) psig
 MAX DESIGN TEMPERATURE - 370 °F

NAME	DATE
DRAWN K. JIMENEZ	04/12/2023
CHKD	
APPVD	
MFG	
QA	

Ace Heaters, LLC www.aceheaters.com	
MATERIAL:	TITLE: SIHSW-COVER
FINISH:	MINIPACK SYSTEM-HORIZONTAL-SW
WEIGHT:	STEAM ELECT. OPERATED VALVE PACKAGE - DUAL UNITON DUAL RACK
UNLESS OTHERWISE SPECIFIED DIMENSIONS ARE IN INCHES TOLERANCE	DWG NO. SIHSWSE-2-DR
DECIMALS .XX ± .05 ANGULAR ± 0.5 MAX SURF	REV. 02
SCALE: N/A	S/O# _____ SHEET: 1 OF 2


SIHSWSE, SW- STEAM ELECTRIC 2-WAY VALVE PACKAGE SIZE AND LOCATION: DUAL UNIT ON RACK															
MP SIZE		4	5	6	8	8L	10	10L	12	12L	14	14L	16	16L	
DIMENSION	ITEMS	1	9 1/2	11 1/2	12	11 9/16	11 9/16	13 7/16	13 7/16	14 7/16	14 7/16	15 3/4	15 3/4	17 5/8	17 5/8
	2	6 5/16	7 11/16	8 3/16	10 1/8	10 1/8	10 13/16	10 13/16	12 1/2	12 1/2	12 1/4	12 1/4	14	14	
	3	58 9/16	59 15/16	60 7/16	62 3/8	62 3/8	76 1/16	76 1/16	77 3/4	77 3/4	77 1/2	77 1/2	79 1/4	79 1/4	
	4	9 5/8	9 5/8	10 1/8	10 7/8	10 7/8	12 1/2	12 1/2	13 13/16	13 13/16	15 3/4	15 3/4	16 1/8	16 3/8	17 7/8
	5	36	30	36 3/4	31 3/4	31 3/4	37 3/4	37 3/4	38 1/2	38 1/2	43 1/4	43 1/4	40 1/2	55 3/4	50 1/2
	6	56	49	57 3/8	53 7/8	53 7/8	59 7/8	59 7/8	63	63	63 15/16	63 15/16	73 1/16	88 5/16	88 1/16
	7	21 4/7	23	23 4/9	25 3/8	25 3/8	25 3/8	25 3/8	26 1/5	26 1/5	27 7/8	27 7/8	27 5/8	27 5/8	29 3/8
	8	26 1/2	26 1/2	26 1/2	26 1/2	26 1/2	26 1/2	26 1/2	26 1/2	26 1/2	26 1/2	26 1/2	26 1/2	26 1/2	26 1/2
	9	15 1/2	15 1/2	15 1/2	15 1/2	15 1/2	15 1/2	15 1/2	15 1/2	15 1/2	15 1/2	15 1/2	15 1/2	15 1/2	15 1/2
	10	42 3/4	35 3/4	44 1/8	39 1/8	44 7/8	39 3/4	45 3/4	42	42	54 1/4	49 3/4	65	62 1/4	76 1/4
	11	1	1 3/8	1 1/2	2 1/16	2 1/16	2 1/2	2 1/2	3 1/16	3 1/16	3 1/8	3 1/8	3 1/8	3 1/4	3 1/4
	12	37	31	38	33	39	34	40	35	47	42	57	53	67	
	13	2 1/2	2 1/2	2 1/2	2 1/2	2 1/2	2 1/2	2 1/2	2 1/2	2 1/2	2 1/2	2 1/2	2 1/2	2 1/2	2 1/2
INLET PIPE SIZE		2 THR.	2 1/2	2 1/2	3 FLG.	3 FLG.	4 FLG.	4 FLG.	4 FLG.	4 FLG.	5 FLG.	5 FLG.	6 FLG.	6 FLG.	
OUTLET PIPE SIZE		2 THR.	2 1/2	2 1/2	3 FLG.	3 FLG.	4 FLG.	4 FLG.	4 FLG.	4 FLG.	5 FLG.	5 FLG.	6 FLG.	6 FLG.	

VALVE SIZE		VALVE SIZE AND OVERALL LOCATION													
1/2"	'A'														
	'B'	3/4													
	'C'	63 3/4	65 1/8	65 5/8	67 9/16	67 9/16	81 1/4	81 1/4	82 15/16	82 15/16	82 11/16	82 11/16	84 7/16	84 7/16	
	'D'	18	18 1/2	18 3/4	19 3/4	19 3/4	22 1/4	22 1/4	23 3/4	23 3/4	25 3/4	25 3/4	27 3/4	27 3/4	
3/4"	'A'														
	'B'	1													
	'C'	64 13/16	66 3/16	66 11/16	68 5/8	68 5/8	82 5/16	82 5/16	84	84	83 3/4	83 3/4	85 1/2	85 1/2	
	'D'	18 11/16	19 3/16	19 7/16	20 7/16	20 7/16	22 15/16	22 15/16	24 7/16	24 7/16	26 7/16	26 7/16	28 7/16	28 7/16	
1"	'A'														
	'B'	1 1/4													
	'C'	65 1/4	66 5/8	67 1/8	69 1/16	69 1/16	82 3/4	82 3/4	84 7/16	84 7/16	84 3/16	84 3/16	85 15/16	85 15/16	
	'D'	19 7/16	19 15/16	20 3/16	21 3/16	21 3/16	23 11/16	23 11/16	25 3/16	25 3/16	27 3/16	27 3/16	29 3/16	29 3/16	
1 1/4"	'A'														
	'B'	1 1/2													
	'C'	66 1/4	67 5/8	68 1/8	70 1/16	70 1/16	83 3/4	83 3/4	85 7/16	85 7/16	85 3/16	85 3/16	86 15/16	86 15/16	
	'D'	20 15/16	21 7/16	21 11/16	22 11/16	22 11/16	25 3/16	25 3/16	26 11/16	26 11/16	28 11/16	28 11/16	30 11/16	30 11/16	
1 1/2"	'A'														
	'B'	2													
	'C'	67 13/16	69 3/16	69 11/16	71 5/8	71 5/8	85 5/16	85 5/16	87	87	86 3/4	86 3/4	88 1/2	88 1/2	
	'D'	21 5/8	22 1/8	22 3/8	23 3/8	23 3/8	25 7/8	25 7/8	27 3/8	27 3/8	29 3/8	29 3/8	31 3/8	31 3/8	
2"	'A'														
	'B'	2 1/2													
	'C'	69 13/16	71 3/16	71 11/16	73 5/8	73 5/8	87 5/16	87 5/16	89	89	88 3/4	88 3/4	90 1/2	90 1/2	
	'D'	23 1/2	24	24 1/4	25 1/4	25 1/4	27 3/4	27 3/4	29 1/4	29 1/4	31 1/4	31 1/4	33 1/4	33 1/4	
2 1/2"	'A'														
	'B'	3													
	'C'	N/A	66 1/16	66 9/16	68 1/2	68 1/2	82 3/16	82 3/16	83 7/8	83 7/8	83 5/8	83 5/8	85 3/8	85 3/8	
	'D'	27 7/8	28 1/8	29 1/8	29 1/8	31 5/8	31 5/8	33 1/8	33 1/8	35 1/8	35 1/8	37 1/8	37 1/8		
3"	'A'														
	'B'	4													
	'C'	N/A	N/A	67 5/8	69 9/16	69 9/16	83 1/4	83 1/4	84 15/16	84 15/16	84 11/16	84 11/16	86 7/16	86 7/16	
	'D'	29 7/8	30 7/8	30 7/8	32 3/8	32 3/8	33 3/8	33 3/8	35 1/16	35 1/16	34 13/16	34 13/16	36 9/16	36 9/16	
4"	'A'														
	'B'	6													
	'C'	N/A	N/A	N/A	71 1/2	71 1/2	85 3/16	85 3/16	86 7/8	86 7/8	86 5/8	86 5/8	88 3/8	88 3/8	
	'D'	35 1/8	35 1/8	37 5/8	37 5/8	39 1/8	39 1/8	41 1/8	41 1/8	44 1/8	44 1/8	46 1/8	46 1/8		
5"	'A'														
	'B'	8													
	'C'	N/A	N/A	N/A	N/A	N/A	85 3/16	85 3/16	86 7/8	86 7/8	86 5/8	86 5/8	88 3/8	88 3/8	
	'D'	41 1/8	41 1/8	42 5/8	42 5/8	44 5/8	44 5/8	46 5/8	46 5/8	48 1/2	48 1/2	50 1/2	50 1/2		



NOTES:
 1/ DIMENSIONS IN INCHES, AND SUBJECT TO CHANGE WITHOUT NOTICE.
 2/ DIM 'B', 'C', 'D', 'E' ARE TO BE APPROXIMATED ONLY, CONSULT FACTORY FOR TIGHT DIMENSIONS.





MADE IN USA

Ace Heaters, LLC
www.aceheaters.com

MATERIAL:		TITLE:	SIHSW-COVER
FINISH:		MINIPACK SYSTEM-HORIZONTAL-SW	
WEIGHT:		STEAM ELECT. OPERATED VALVE	
UNLESS OTHERWISE SPECIFIED DIMENSIONS ARE IN INCHES TOLERANCE		PACKAGE - DUAL UNIT ON DUAL RACK	
DWG NO.	SIHSWSE-2-DR-DIM	REV.	02
SCALE: N/A	S/O#	SHEET: 2 OF 2	

ASME SECTION VIII DIV 1:
 DESIGN PRESSURE - (150) psig
 TEST PRESSURE - (195) psig
 MAX DESIGN TEMPERATURE - 370 °F

DRAWN	NAME	DATE
CHKD	K. JIMENEZ	04/12/2023
APPV		
MFG		
QA		