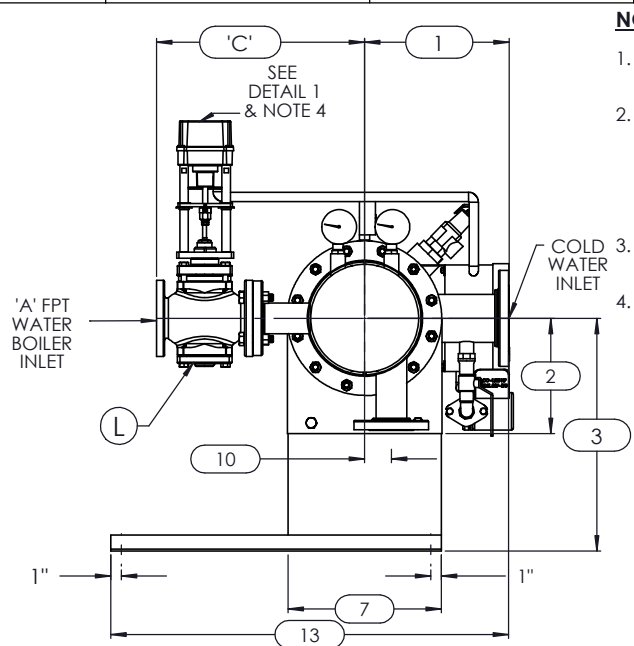


**FRONT VIEW**

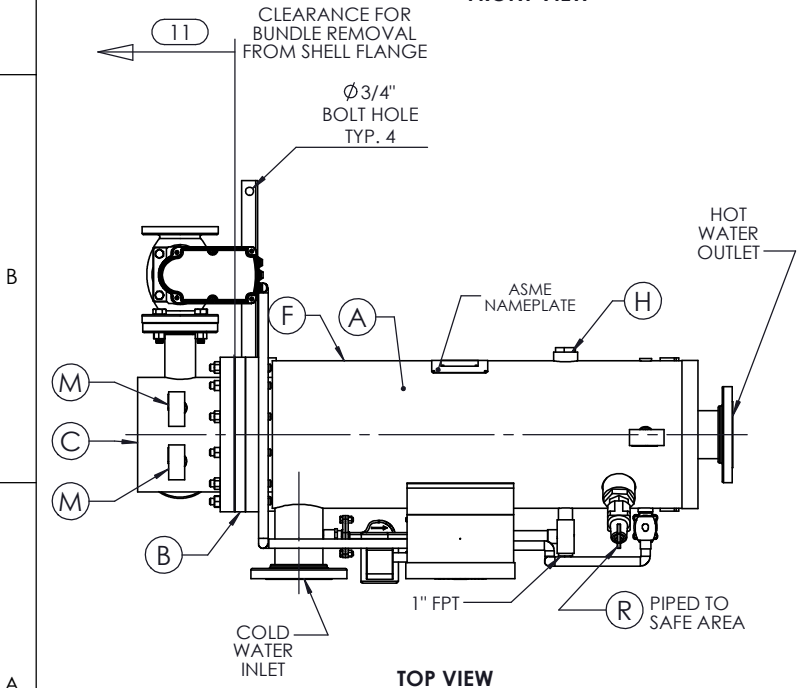


**LEFT VIEW**

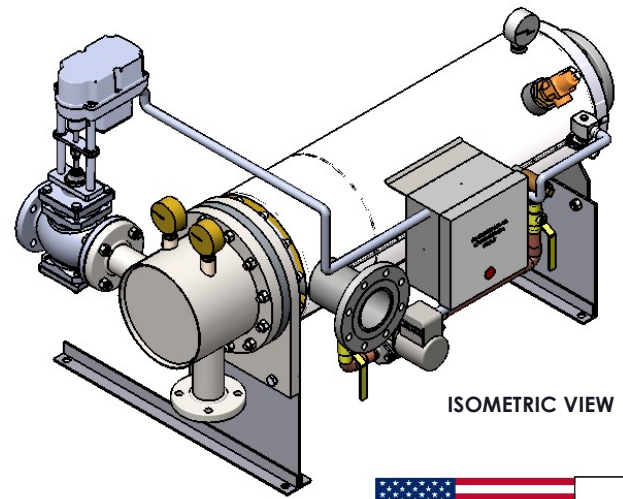
**NOTES:**

1. REFER TO PRODUCT SPECIFICATION FOR DESCRIPTION OF LETTERED ITEMS.
2. **INSTALLATION:**  
ALL COMPONENTS SHOWN HERE ARE PREWIRED & PREPIPED BY ACE HEATERS, LLC. CUSTOMER WILL ONLY NEED TO PLUMB WATER TO BE HEATED, PIPE STEAM AND CONDENSATE LINES, AND BRING ELECTRICITY TO UNIT.
3. DIMENSIONS ARE SUBJECT TO CHANGE. CONSULT FACTORY FOR TIGHT DIMENSIONS.
4. THIS CONFIGURATION CHANGES FOR VALVE SIZE 1/2" TO 2". SEE DETAIL 1 FOR REFERENCE.

APPROX. EMPTY WT:



**TOP VIEW**



**ISOMETRIC VIEW**



	CERTIFIED BY	<b>Ace Heaters, LLC</b> www.aceheatingllc.com
	MAXIMUM ALLOWABLE WORKING PRESSURE	
	SHELL 150 PSI @ 210 °F	
	TUBES 150 PSI @ 370 °F	
	MIN. D.M.T. 0 °F @ 150 PSI	
S/N	YEAR BUILT	
MODEL		
CAPACITY	GAL SA.	sqFT
JOB NO.	XXX	



**Ace Heaters, LLC**  
www.aceheaters.com

MATERIAL:	TITLE: SIHSW-COVER
FINISH:	MINIPACK SYSTEM-HORIZONTAL-SW
WEIGHT:	WATER 2W ELECT. OPERATED VALVE PACKAGE
UNLESS OTHERWISE SPECIFIED DIMENSIONS ARE IN INCHES TOLERANCE	DWG NO. SIHSWWE-2W
DECIMALS .XX ± .05	ANGULAR ± 0.5
MAX SURF ± .010	SCALE: N/A
	S/O#
	SHEET: 1 OF 2

NAME	DATE
DRAWN K. JIMENEZ	04/12/2023
CHKD	
APPVD	
MFG	
QA	

THE INFORMATION CONTAINED WITHIN THIS DRAWING IS PROPRIETARY AND THE SOLE PROPERTY OF ACE HEATERS, LLC. ANY REPRODUCTION IN PART OR AS A WHOLE WITHOUT THE WRITTEN PERMISSION OF ACE HEATERS, LLC IS PROHIBITED.

8

7

6

5

4

3

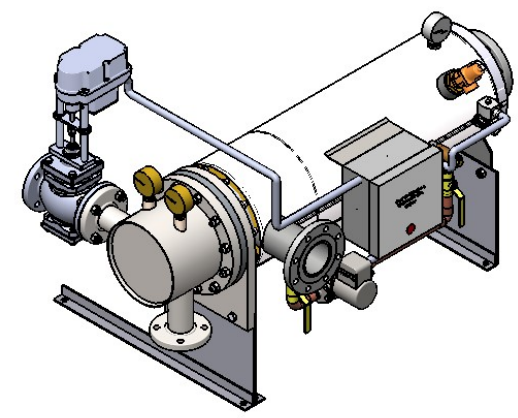
2

1

### SIHSWWE-2W, SW-WATER ELECTRIC 2-WAY MIXING VALVE PACKAGE SIZE AND LOCATION

MP SIZE	4	5	6	8	8L	10	10L	12	12L	14	14L	16	16L	
ITEMS	1	9 1/2	11 1/2	12	11 9/16	11 9/16	13 7/16	13 7/16	14 7/16	14 7/16	15 3/4	15 3/4	17 5/8	17 5/8
DIMENSION	2	6 5/16	7 11/16	8 3/16	10 1/8	10 1/8	10 13/16	10 13/16	12 1/2	12 1/2	12 1/4	12 1/4	14	14
	3	13 1/2	14 7/8	15 3/8	18 5/16	18 5/16	22	22	26 7/8	26 7/8	26 5/8	26 5/8	28 3/8	28 3/8
	4	9 5/8	9 5/8	10 1/8	10 7/8	10 7/8	12 1/2	11 13/16	15 3/4	15 3/4	16 1/8	16 3/8	17 7/8	17 7/8
	5	36	30	36 3/4	31 3/4	37 3/4	32 1/2	38 1/2	33 1/4	45 1/4	40 1/2	55 3/4	50 1/2	65 3/4
	6	56	49	57 3/8	53 7/8	59 7/8	55 1/2	61 1/2	57 15/16	69 15/16	69 7/8	85 1/8	83 5/8	97 5/8
	7	7 1/2	8 5/8	9 3/4	11 3/4	11 3/4	14 3/8	14 3/8	16 1/2	16 1/2	18 1/2	18 1/2	20	20
	8	42 3/8	33 1/4	41 5/8	36 3/4	42 3/4	37 3/8	43 3/8	38 3/8	50 3/8	46 1/8	61 3/8	58 5/8	72 5/8
	9	10 5/8	10 3/4	10 3/4	11 5/8	11 5/8	12 1/8	12 1/8	12 15/16	12 15/16	16 5/8	16 5/8	17 7/8	17 7/8
	10	1	1 3/8	1 1/2	2 1/16	2 1/16	2 1/2	2 1/2	3 1/16	3 1/16	3 1/8	3 1/8	3 1/4	3 1/4
	11	37	31	38	33	39	34	40	35	47	42	57	53	67
	12	2 1/2	2 1/2	2 1/2	2 1/2	2 1/2	2 1/2	2 1/2	2 1/2	2 1/2	2 1/2	2 1/2	2 1/2	2 1/2
13	30 1/4	30 1/8	30 1/16	33 9/16	33 9/16	37 1/4	37 1/4	40 3/16	40 3/16	41 1/4	41 1/4	42 1/2	42 1/2	
INLET PIPE SIZE	2 THR.	2 1/2	2 1/2	3 FLG.	3 FLG.	4 FLG.	4 FLG.	4 FLG.	4 FLG.	5 FLG.	5 FLG.	6 FLG.	6 FLG.	
OUTLET PIPE SIZE	2 THR.	2 1/2	2 1/2	3 FLG.	3 FLG.	4 FLG.	4 FLG.	4 FLG.	4 FLG.	5 FLG.	5 FLG.	6 FLG.	6 FLG.	

VALVE SIZE 'A'	ITEM	VALVE SIZE AND OVERALL LOCATION												
1/2"	'C'	11 1/8	11 5/8	11 7/8	12 7/8	12 7/8	15 3/8	15 3/8	16 7/8	16 7/8	18 7/8	18 7/8	20 7/8	20 7/8
	'D'	29 1/4	30 5/8	31 1/8	34 1/16	34 1/16	37 3/4	37 3/4	42 5/8	42 5/8	42 3/8	42 3/8	44 1/8	44 1/8
3/4"	'C'	11 1/8	11 5/8	11 7/8	12 7/8	12 7/8	15 3/8	15 3/8	16 7/8	16 7/8	18 7/8	18 7/8	20 7/8	20 7/8
	'D'	29 1/4	30 5/8	31 1/8	34 1/16	34 1/16	37 3/4	37 3/4	42 5/8	42 5/8	42 3/8	42 3/8	44 1/8	44 1/8
1"	'C'	11 1/8	11 5/8	11 7/8	12 7/8	12 7/8	15 3/8	15 3/8	16 7/8	16 7/8	18 7/8	18 7/8	20 7/8	20 7/8
	'D'	29 1/4	30 5/8	31 1/8	34 1/16	34 1/16	37 3/4	37 3/4	42 5/8	42 5/8	42 3/8	42 3/8	44 1/8	44 1/8
1 1/4"	'C'	12	12 1/2	12 3/4	13 3/4	13 3/4	16 1/4	16 1/4	17 3/4	17 3/4	19 3/4	19 3/4	21 3/4	21 3/4
	'D'	29 7/8	31 1/4	31 3/4	34 11/16	34 11/16	38 3/8	38 3/8	43 1/4	43 1/4	43	43	44 3/4	44 3/4
1 1/2"	'C'	12	12 1/2	12 3/4	13 3/4	13 3/4	16 1/4	16 1/4	17 3/4	17 3/4	19 3/4	19 3/4	21 3/4	21 3/4
	'D'	29 7/8	31 1/4	31 3/4	34 11/16	34 11/16	38 3/8	38 3/8	43 1/4	43 1/4	43	43	44 3/4	44 3/4
2"	'C'	12 3/4	13 1/4	13 1/2	14 1/2	14 1/2	17	17	18 1/2	18 1/2	20 1/2	20 1/2	22 1/2	22 1/2
	'D'	30 1/8	31 1/2	32	34 15/16	34 15/16	38 5/8	38 5/8	43 1/2	43 1/2	43 1/4	43 1/4	45	45
2 1/2"	'C'	N/A	15 3/4	16	17	17	19 1/2	19 1/2	21	21	23	23	25	25
	'D'	N/A	33 7/8	34 3/8	37 5/16	37 5/16	41	41	45 7/8	45 7/8	45 5/8	45 5/8	47 3/8	47 3/8
3"	'C'	N/A	N/A	17	18	18	20 1/2	20 1/2	22	22	24	24	26	26
	'D'	N/A	N/A	35	37 15/16	37 15/16	41 5/8	41 5/8	46 1/2	46 1/2	46 1/4	46 1/4	48	48
4"	'C'	N/A	N/A	N/A	21	21	23 1/2	23 1/2	25	25	27	27	29	29
	'D'	N/A	N/A	N/A	39 1/16	39 1/16	42 3/4	42 3/4	47 5/8	47 5/8	47 3/8	47 3/8	49 1/8	49 1/8
5"	'C'	N/A	N/A	N/A	N/A	N/A	26 1/4	26 1/4	27 3/4	27 3/4	29 3/4	29 3/4	31 3/4	31 3/4
	'D'	N/A	N/A	N/A	N/A	N/A	43 1/4	43 1/4	48 1/8	48 1/8	47 7/8	47 7/8	49 5/8	49 5/8



ISOMETRIC VIEW



a nudyne company

Ace Heaters, LLC  
www.aceheaters.com

**NOTES:**

- 1/ DIMENSIONS IN INCHES, AND SUBJECT TO CHANGE WITHOUT NOTICE.
- 2/ DIM 'B', 'C', 'D' ARE TO BE APPROXIMATED ONLY, CONSULT FACTORY FOR TIGHT DIMENSIONS.



ASME SECTION VIII DIV 1 : DESIGN PRESSURE - (150) psig TEST PRESSURE - (195) psig MAX DESIGN TEMPERATURE - 370 °F	
DRAWN	K. JIMENEZ 04/12/2023
CHKD	
APPVD	
MFG	
QA	

MATERIAL :	TITLE : SIHSW-COVER MINIPACK SYSTEM-HORIZONTAL-SW WATER 2W ELECT. OPERATED VALVE PACKAGE
FINISH :	
WEIGHT :	
UNLESS OTHERWISE SPECIFIED DIMENSIONS ARE IN INCHES TOLERANCE	DWG NO. SIHSWWE-2W-DIM
DECIMALS .XX ± .05 .XXX ± .010	ANGULAR ± 3 MAX SURF
SCALE : N/A	S/O #
	SHEET : 2 OF 2

8

7

6

5

4

3

2

1

THE INFORMATION CONTAINED WITHIN THIS DRAWING IS PROPRIETARY AND THE SOLE PROPERTY OF ACE HEATERS, LLC. ANY REPRODUCTION IN PART OR AS A WHOLE WITHOUT THE WRITTEN PERMISSION OF ACE HEATERS, LLC IS PROHIBITED.