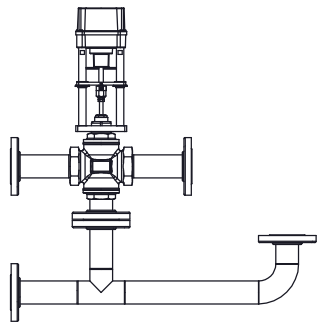


NOTES:

1. REFER TO PRODUCT SPECIFICATION FOR DESCRIPTION OF LETTERED ITEMS.
2. **INSTALLATION:**
ALL COMPONENTS SHOWN HERE ARE PREWIRED & PREPARED BY ACE HEATERS, LLC. CUSTOMER WILL ONLY NEED TO PLUMB WATER TO BE HEATED, PIPE STEAM AND CONDENSATE LINES, AND BRING ELECTRICITY TO UNIT.
3. DIMENSIONS ARE SUBJECT TO CHANGE. CONSULT FACTORY FOR TIGHT DIMENSIONS.
4. THIS CONFIGURATION CHANGES FOR VALVE SIZE 1/2" TO 2". SEE DETAIL 1 FOR REFERENCE.

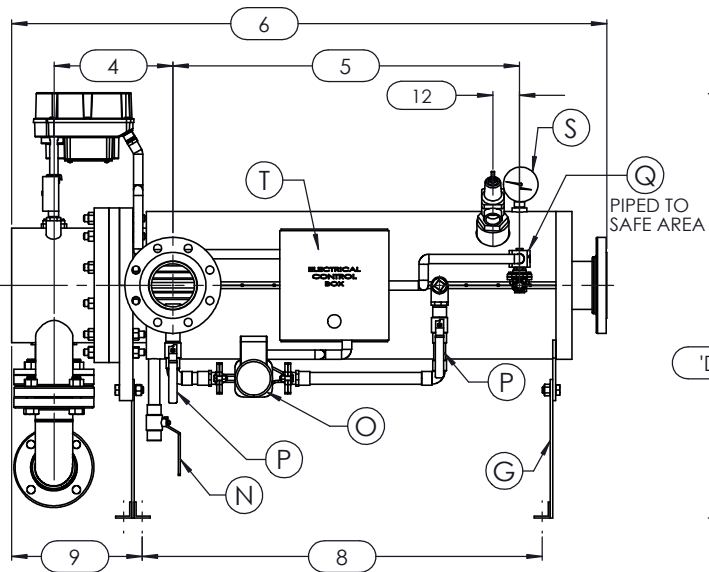
APPROX. EMPTY WT:



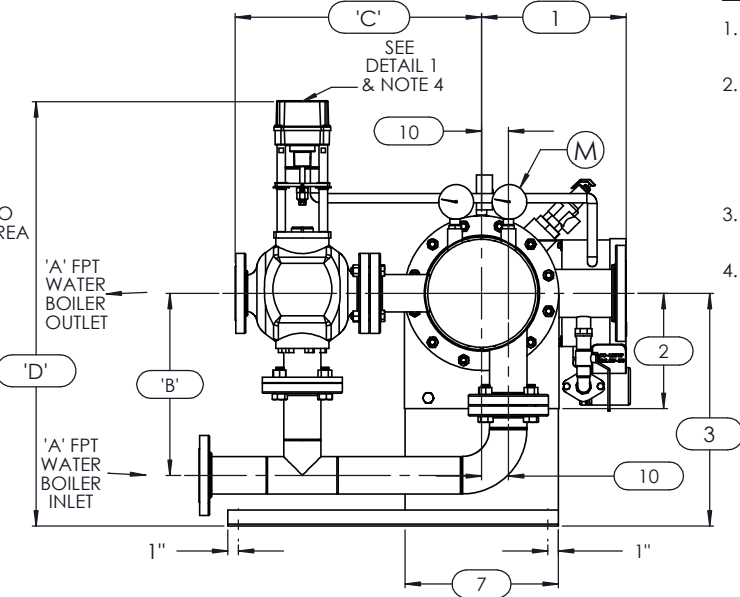
DETAIL 1



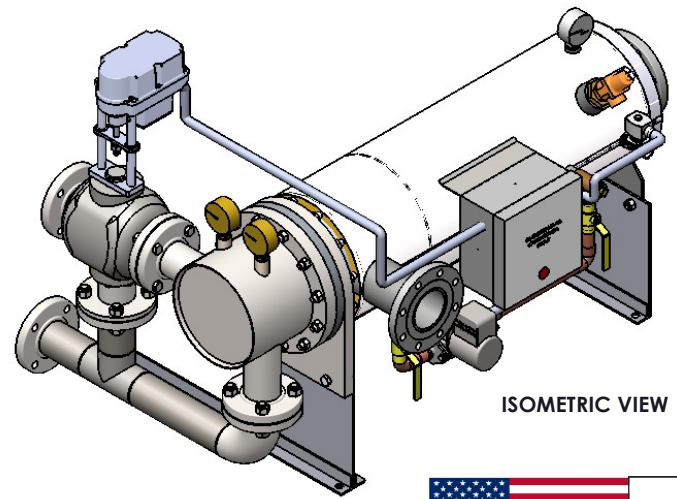
	CERTIFIED BY	Ace Heaters, LLC www.aceheatingllc.com
	MAXIMUM ALLOWABLE WORKING PRESSURE	
	SHELL	150 PSI @ 210 °F
	TUBES	150 PSI @ 370 °F
	MIN. D.M.T.	0 °F @ 150 PSI
S/N	YEAR BUILT	
MODEL		
CAPACITY		GAL SA. SQFT
JOB NO.		XXX



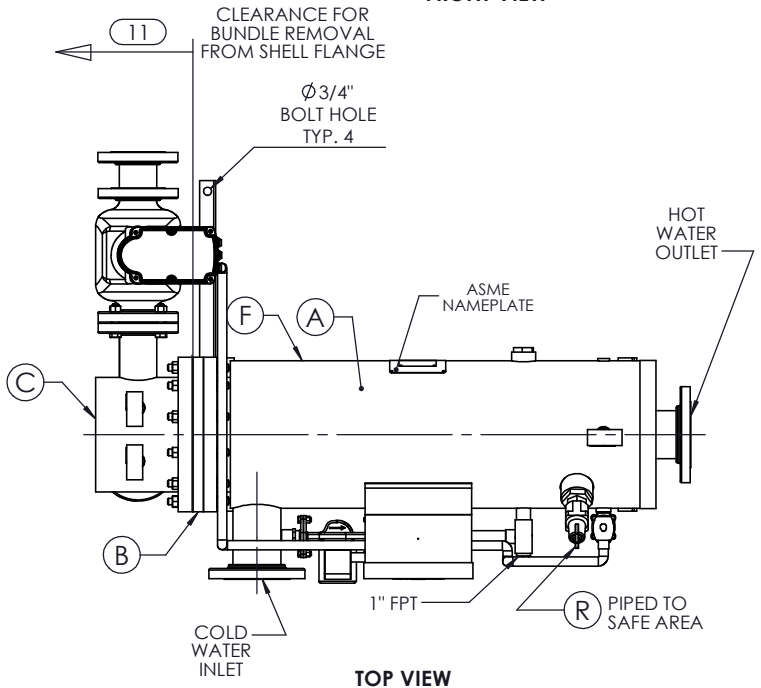
FRONT VIEW



LEFT VIEW



ISOMETRIC VIEW



TOP VIEW



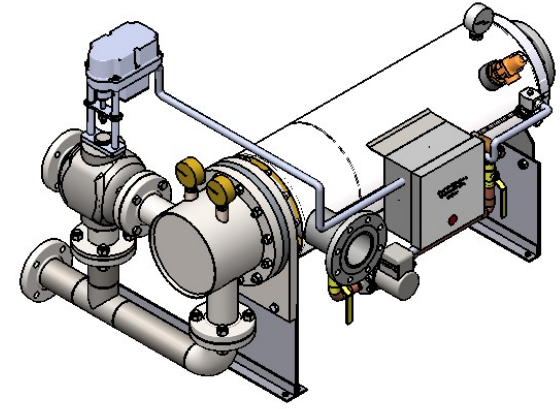
ASME SECTION VIII DIV 1: DESIGN PRESSURE - (150) psig TEST PRESSURE - (195) psig MAX DESIGN TEMPERATURE - 370 °F	
NAME	DATE
DRAWN K. JIMENEZ	04/12/2023
CHKD	
APPVD	
MFG	
QA	

Ace Heaters, LLC www.aceheaters.com	
MATERIAL:	TITLE: SIHSW-COVER
FINISH:	MINIPACK SYSTEM-HORIZONTAL-SW
WEIGHT:	WATER 3W ELECT. OPERATED VALVE PACKAGE
UNLESS OTHERWISE SPECIFIED DIMENSIONS ARE IN INCHES TOLERANCE	
DECIMALS .XX ± .05	ANGULAR ± 3°
XXX ± .010	MAX SURF
DWG NO. SIHSWWE-3W	REV. 02
SCALE: N/A	S/O#
SHEET 1 OF 2	

SIHSWWE-3W, SW-WATER ELECTRIC 3-WAY MIXING VALVE PACKAGE SIZE AND LOCATION

MP SIZE	4	5	6	8	8L	10	10L	12	12L	14	14L	16	16L	
ITEMS	1	9 1/2	11 1/2	12	11 9/16	11 9/16	13 7/16	13 7/16	14 7/16	14 7/16	15 3/4	15 3/4	17 5/8	17 5/8
	2	6 5/16	7 11/16	8 3/16	10 1/8	10 1/8	10 13/16	10 13/16	12 1/2	12 1/2	12 1/4	12 1/4	14	14
	3	13 1/2	14 7/8	15 3/8	18 5/16	18 5/16	22	22	26 7/8	26 7/8	26 5/8	26 5/8	28 3/8	28 3/8
	4	9 5/8	9 5/8	10 1/8	10 7/8	10 7/8	12 1/2	11 13/16	15 3/4	15 3/4	16 1/8	16 1/8	17 7/8	17 7/8
	5	36	30	36 3/4	31 3/4	37 3/4	32 1/2	38 1/2	33 1/4	45 1/4	40 1/2	55 3/4	50 1/2	65 3/4
	6	56	49	57 3/8	53 7/8	59 7/8	55 1/2	61 1/2	57 15/16	69 15/16	69 7/8	85 1/8	83 5/8	97 5/8
	7	7 1/2	8 5/8	9 3/4	11 3/4	11 3/4	14 3/8	14 3/8	16 1/2	16 1/2	18 1/2	18 1/2	20	20
	8	42 3/8	33 1/4	41 5/8	36 3/4	42 3/4	37 3/8	43 3/8	38 3/8	50 3/8	46 1/8	61 3/8	58 5/8	72 5/8
	9	10 5/8	10 3/4	10 3/4	11 5/8	11 5/8	12 1/8	12 1/8	12 15/16	12 15/16	16 5/8	16 5/8	17 7/8	17 7/8
	10	1	1 3/8	1 1/2	2 1/16	2 1/16	2 1/2	2 1/2	3 1/16	3 1/16	3 1/8	3 1/8	3 1/4	3 1/4
	11	37	31	38	33	39	34	40	35	47	42	57	53	67
	12	2 1/2	2 1/2	2 1/2	2 1/2	2 1/2	2 1/2	2 1/2	2 1/2	2 1/2	2 1/2	2 1/2	2 1/2	2 1/2
INLET PIPE SIZE		2 THR.	2 1/2	2 1/2	3 FLG.	3 FLG.	4 FLG.	4 FLG.	4 FLG.	4 FLG.	5 FLG.	5 FLG.	6 FLG.	6 FLG.
OUTLET PIPE SIZE		2 THR.	2 1/2	2 1/2	3 FLG.	3 FLG.	4 FLG.	4 FLG.	4 FLG.	4 FLG.	5 FLG.	5 FLG.	6 FLG.	6 FLG.

VALVE SIZE 'A'	ITEM	VALVE SIZE AND OVERALL LOCATION												
1/2"	'B'	11 1/2	12 7/8	13 3/8	16 1/3	16 1/3	20	20	24 7/8	24 7/8	24 5/8	24 5/8	26 3/8	26 3/8
	'C'	15 11/16	16 3/16	16 7/16	17 7/16	17 7/16	19 15/16	19 15/16	21 7/16	21 7/16	23 7/16	23 7/16	25 7/16	25 7/16
	'D'	29 1/4	30 5/8	31 1/8	34 1/16	34 1/16	37 3/4	37 3/4	42 5/8	42 5/8	42 3/8	42 3/8	44 1/8	44 1/8
	'B'	11 1/4	12 5/8	13 1/8	16	16	19 3/4	19 3/4	24 5/8	24 5/8	24 3/8	24 3/8	26 1/8	26 1/8
3/4"	'C'	15 11/16	16 3/16	16 7/16	17 7/16	17 7/16	19 15/16	19 15/16	21 7/16	21 7/16	23 7/16	23 7/16	25 7/16	25 7/16
	'D'	29 1/4	30 5/8	31 1/8	34 1/16	34 1/16	37 3/4	37 3/4	42 5/8	42 5/8	42 3/8	42 3/8	44 1/8	44 1/8
	'B'	11 1/4	12 5/8	13 1/8	16 1/16	16 1/16	19 3/4	19 3/4	24 5/8	24 5/8	24 3/8	24 3/8	26 1/8	26 1/8
	'C'	16 11/16	17 3/16	17 7/16	18 7/16	18 7/16	20 15/16	20 15/16	22 7/16	22 7/16	24 7/16	24 7/16	26 7/16	26 7/16
1"	'D'	29 1/4	30 5/8	31 1/8	34 1/16	34 1/16	37 3/4	37 3/4	42 5/8	42 5/8	42 3/8	42 3/8	44 1/8	44 1/8
	'B'	11	12 3/8	12 7/8	15 4/5	15 4/5	19 1/2	19 1/2	24 3/8	24 3/8	24 1/8	24 1/8	25 7/8	25 7/8
	'C'	18	18 1/2	18 3/4	19 3/4	19 3/4	22 1/4	22 1/4	23 3/4	23 3/4	25 3/4	25 3/4	27 3/4	27 3/4
	'D'	29 7/8	31 1/4	31 3/4	34 11/16	34 11/16	38 3/8	38 3/8	43 1/4	43 1/4	43	43	44 3/4	44 3/4
1 1/4"	'B'	10 1/2	11 7/8	12 3/8	15 5/16	15 5/16	19	19	23 7/8	23 7/8	23 5/8	23 5/8	25 3/8	25 3/8
	'C'	18	18 1/2	18 3/4	19 3/4	19 3/4	22 1/4	22 1/4	23 3/4	23 3/4	25 3/4	25 3/4	27 3/4	27 3/4
	'D'	29 7/8	31 1/4	31 3/4	34 11/16	34 11/16	38 3/8	38 3/8	43 1/4	43 1/4	43	43	44 3/4	44 3/4
	'B'	9 1/2	10 7/8	11 3/8	14 5/16	14 5/16	18	18	22 7/8	22 7/8	22 5/8	22 5/8	24 3/8	24 3/8
2"	'C'	18 15/16	19 7/16	19 11/16	20 11/16	20 11/16	23 3/16	23 3/16	24 11/16	24 11/16	26 11/16	26 11/16	28 11/16	28 11/16
	'D'	30 1/8	31 1/2	32	34 15/16	34 15/16	38 5/8	38 5/8	43 1/2	43 1/2	43 1/4	43 1/4	45	45
	'B'	10 7/8	11 3/8	11 3/8	14 5/16	14 5/16	18	18	22 7/8	22 7/8	22 5/8	22 5/8	24 3/8	24 3/8
	'C'	N/A	19 3/8	19 5/8	20 5/8	20 5/8	23 1/8	23 1/8	24 5/8	24 5/8	26 5/8	26 5/8	28 5/8	28 5/8
2 1/2"	'D'	33 7/8	34 3/8	37 5/16	37 5/16	41	41	45 7/8	45 7/8	45 5/8	45 5/8	47 3/8	47 3/8	
	'B'	11 1/8	14 1/16	14 1/16	17 3/4	17 3/4	22 5/8	22 5/8	22 5/8	22 5/8	22 3/8	24 1/8	24 1/8	
	'C'	N/A	N/A	19 5/8	20 5/8	20 5/8	23 1/8	23 1/8	24 5/8	24 5/8	26 5/8	26 5/8	28 5/8	28 5/8
	'D'			35	37 15/16	37 15/16	41 5/8	41 5/8	46 1/2	46 1/2	46 1/4	46 1/4	48	48
3"	'B'				13 5/16	13 5/16	17	17	21 7/8	21 7/8	21 5/8	21 5/8	23 3/8	23 3/8
	'C'	N/A	N/A	N/A	20 11/16	20 11/16	23 3/16	23 3/16	24 11/16	24 11/16	26 11/16	26 11/16	28 11/16	28 11/16
	'D'				39 1/16	39 1/16	42 3/4	42 3/4	47 5/8	47 5/8	47 3/8	47 3/8	49 1/8	49 1/8
	'B'				16	16	20 7/8	20 7/8	20 7/8	20 7/8	20 5/8	20 5/8	22 3/8	22 3/8
4"	'C'	N/A	N/A	N/A	23 3/16	23 3/16	24 11/16	24 11/16	26 11/16	26 11/16	26 11/16	26 11/16	28 11/16	28 11/16
	'D'				43 1/4	43 1/4	48 1/8	48 1/8	47 7/8	47 7/8	47 7/8	47 7/8	49 5/8	49 5/8
	'B'													
	'C'	N/A	N/A	N/A	N/A	N/A								



ISOMETRIC VIEW




a nudyne company

NOTES:

- 1/ DIMENSIONS IN INCHES, AND SUBJECT TO CHANGE WITHOUT NOTICE.
- 2/ DIM 'B', 'C', 'D' ARE TO BE APPROXIMATED ONLY, CONSULT FACTORY FOR TIGHT DIMENSIONS.



ASME SECTION VIII DIV 1: DESIGN PRESSURE - (150) psig TEST PRESSURE - (195) psig MAX DESIGN TEMPERATURE - 370 °F	
DRAWN	K. JIMENEZ 04/12/2023
CHKD	
APPD	
MFG	
QA	

 <p>Ace Heaters, LLC www.aceheaters.com</p>	
MATERIAL:	TITLE: SIHSW-COVER
FINISH:	MINIPACK SYSTEM-HORIZONTAL-SW
WEIGHT:	WATER 3W ELECT. OPERATED VALVE PACKAGE
UNLESS OTHERWISE SPECIFIED DIMENSIONS ARE IN INCHES TOLERANCE	DWG NO. SIHSWWE-3W-DIM
DECIMALS .XX ± .05 ANGULAR ± 3° MAX SURF	REV. 02
SCALE: N/A	S/O #
SHEET: 2 OF 2	