

8

7

6

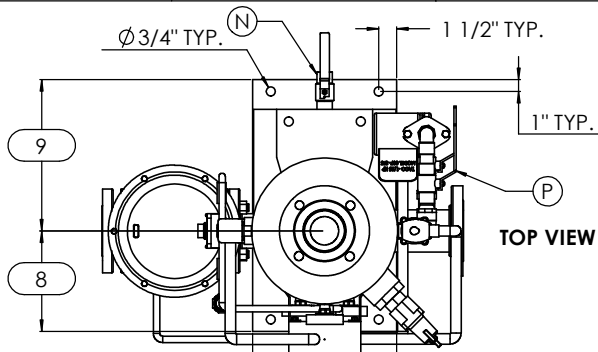
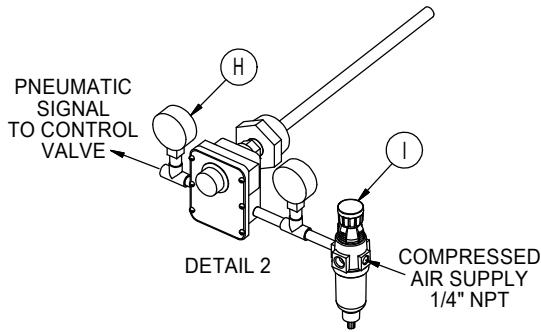
5

4

3

2

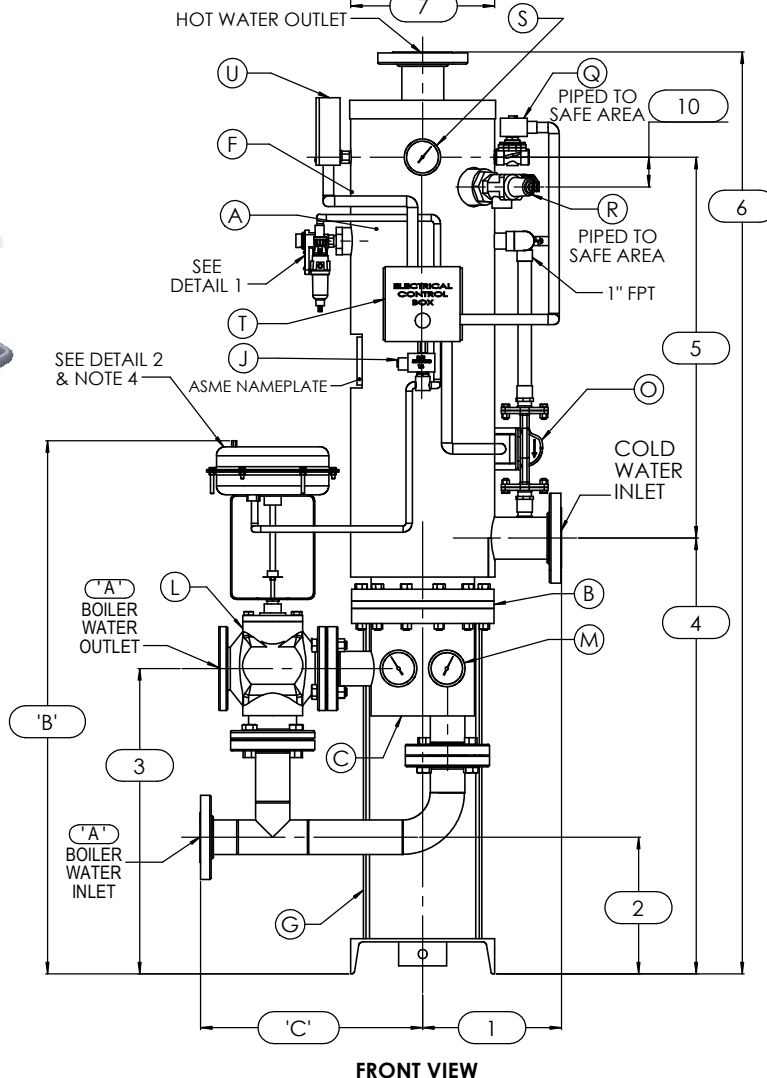
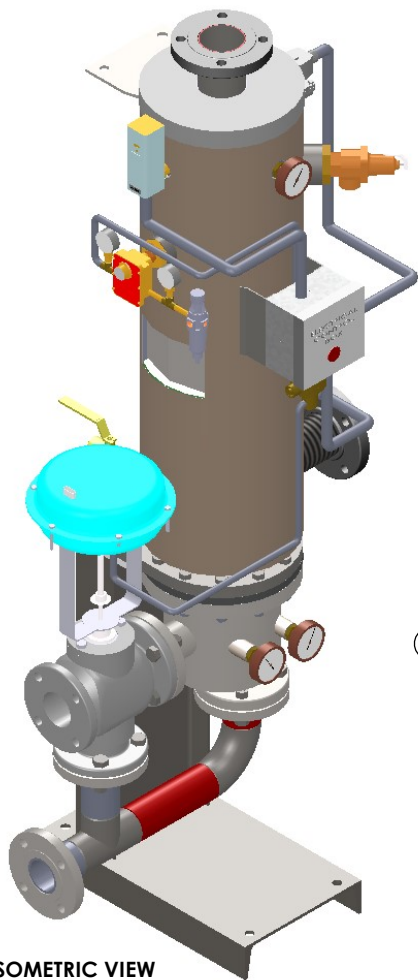
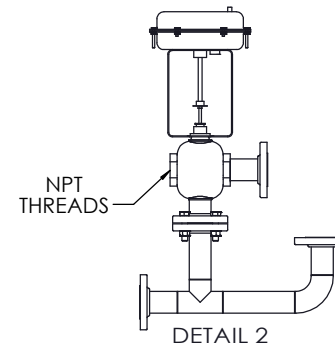
1



**NOTES:**

1. REFER TO PRODUCT SPECIFICATION FOR DESCRIPTION OF LETTERED ITEMS.
2. **INSTALLATION:**  
ALL COMPONENTS SHOWN HERE ARE PREWIRED & PREPIPED BY ACE HEATERS, LLC. CUSTOMER WILL ONLY NEED TO PLUMB WATER TO BE HEATED, PLUMB BOILER WATER, HOOKUP AIR TO AIR FILTER-PRESSURE REGULATOR, AND BRING ELECTRICITY TO UNIT.
3. DIMENSIONS ARE SUBJECT TO CHANGE. CONSULT FACTORY FOR TIGHT DIMENSIONS.
4. THIS CONFIGURATION CHANGES FOR VALVE SIZE 1/2" TO 2". SEE DETAIL 2 FOR REFERENCE.

APPROX. EMPTY WT.:



	CERTIFIED BY	
	<b>Ace Heaters, LLC</b>	
	www.aceheatingllc.com	
	MAXIMUM ALLOWABLE WORKING PRESSURE	
	SHELL	150 PSI @ 210 °F
TUBES	150 PSI @ 370 °F	
MIN. D.M.T. 0 °F @ 150 PSI		
S/N	YEAR BUILT	
MODEL		
CAPACITY	GAL SA. SQFT	
JOB NO.	XXX	



ASME SECTION VIII DIV 1		
DESIGN PRESSURE: (150) psig		
TEXT PRESSURE: (150) psig		
MAX DESIGN TEMPERATURE: 370 °F		
NAME	DATE	
DRAWN K. JIMENEZ	04/12/2023	
CHKD		
APPD		
MRG		
QA		

<b>Ace Heaters, LLC</b> www.aceheaters.com	
MATERIAL:	TITLE: SIVSW - COVER MINIPACK SYSTEM - VERTICAL SW WATER 3W - PNEUMATIC OPERATED VALVE PACKAGE
FINISH:	
WEIGHT:	
UNLESS OTHERWISE SPECIFIED DIMENSIONS ARE IN INCHES TOLERANCE	
DECIMALS .XX	ANGULAR ± 3
XX ± .010	MAX SURF
DWG NO. SIVSWWA-3W	REV. 02
SCALE: NA	SHEET: 1 OF 2

THE INFORMATION CONTAINED WITHIN THIS DRAWING IS PROPRIETARY AND THE SOLE PROPERTY OF ACE HEATERS, LLC. ANY REPRODUCTION IN PART OR AS A WHOLE WITHOUT THE WRITTEN PERMISSION OF ACE HEATERS, LLC IS PROHIBITED.

8

7

6

5

4

3

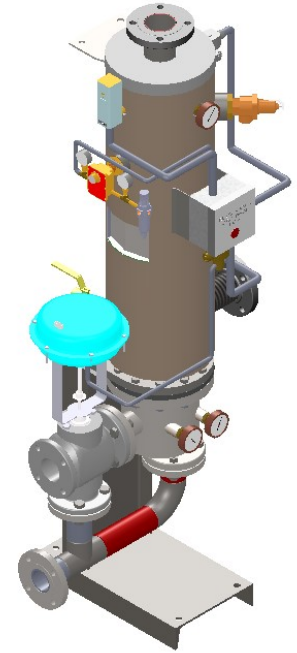
2

1

SIVSWWA-3W, WATER - PNEUMATIC OPERATED VALVE PACKAGE SIZE AND LOCATION

MP SIZE	4	5	6	8	8L	10	10L	12	12L	14	14L	16	16L	
ITEMS	1	9 1/2	11 1/2	12	11 9/16	11 9/16	13 7/16	13 7/16	14 7/16	14 7/16	15 3/4	15 3/4	17 5/8	17 5/8
DIMENSIONS	2	13 7/16	7 3/16	15 1/16	8 3/16	8 3/16	10 5/8	10 5/8	12 1/8	12 1/8	15 1/16	15 1/16	25 1/16	25 1/16
	3	30 3/16	23 15/16	31 11/16	25 7/16	32 7/16	27 3/4	34 3/4	29 1/8	41 1/8	32 1/16	47 1/16	42 1/16	56 1/16
	4	39 13/16	33 9/16	41 13/16	36 5/16	43 5/16	30 5/8	44 15/16	41 5/8	53 5/8	48 5/8	63 7/8	60 5/8	74 5/8
	5	36	30	36 3/4	31 3/4	37 3/4	32 1/2	38 1/2	33 1/4	45 1/4	40 1/2	55 3/4	50 1/2	65 3/4
	6	82 15/16	69 11/16	85 13/16	75 5/16	88 5/16	79 1/4	92 1/4	83 1/4	107 1/4	98 1/4	128 1/2	121 3/4	149 3/4
	7	12	12	12	12	12	18	18	18	18	18	18	18	18
	8	12 3/16	11 1/16	10 3/8	9 1/4	9 1/4	13 11/16	13 11/16	12	12	15 1/4	15 1/4	13 1/2	13 1/2
	9	8 13/16	9 15/16	10 5/8	11 3/4	11 3/4	13 5/16	13 5/16	15	15	14 3/4	14 3/4	16 1/2	16 1/2
	10	2 1/2	2 1/2	2 1/2	2 1/2	2 1/2	2 1/2	2 1/2	2 1/2	2 1/2	2 1/2	2 1/2	2 1/2	2 1/2
	INLET PIPE SIZE	2 THR.	2 1/2 FLG.	2 1/2 FLG.	3 FLG.	3 FLG.	4 FLG.	4 FLG.	4 FLG.	4 FLG.	5 FLG.	5 FLG.	6 FLG.	6 FLG.
OUTLET PIPE SIZE	2 THR.	2 1/2 FLG.	2 1/2 FLG.	3 FLG.	3 FLG.	4 FLG.	4 FLG.	4 FLG.	4 FLG.	5 FLG.	5 FLG.	6 FLG.	6 FLG.	

'A' VALVE SIZE	ITEM	VALVE SIZE AND OVERALL LOCATION												
1/2"	'B'	46	39 3/4	47 1/2	41 1/4	48 1/4	43 9/16	50 9/16	44 15/16	56 15/16	47 7/8	62 7/8	57 7/8	71 7/8
	'C'	15 9/16	16 1/16	16 5/16	17 5/16	17 5/16	19 13/16	19 13/16	21 5/16	21 5/16	23 5/16	23 5/16	25 5/16	25 5/16
3/4"	'B'	46	39 3/4	47 1/2	41 1/4	48 1/4	43 9/16	50 9/16	44 15/16	56 15/16	47 7/8	62 7/8	57 7/8	71 7/8
	'C'	16 9/16	17 1/16	17 5/16	18 5/16	18 5/16	20 13/16	20 13/16	22 5/16	22 5/16	24 5/16	24 5/16	26 5/16	26 5/16
1"	'B'	46	39 3/4	47 1/2	41 1/4	48 1/4	43 9/16	50 9/16	44 15/16	56 15/16	47 7/8	62 7/8	57 7/8	71 7/8
	'C'	16 9/16	17 1/16	17 5/16	18 5/16	18 5/16	20 13/16	20 13/16	22 5/16	22 5/16	24 5/16	24 5/16	26 5/16	26 5/16
1 1/4"	'B'	46	39 3/4	47 1/2	41 1/4	48 1/4	43 9/16	50 9/16	44 15/16	56 15/16	47 7/8	62 7/8	57 7/8	71 7/8
	'C'	16 9/16	17 1/16	17 5/16	18 5/16	18 5/16	20 13/16	20 13/16	22 5/16	22 5/16	24 5/16	24 5/16	26 5/16	26 5/16
1 1/2"	'B'	46 3/4	40 1/2	48 1/4	42	49	44 5/16	51 5/16	45 11/16	57 11/16	48 5/8	63 5/8	58 5/8	72 5/8
	'C'	16 9/16	17 1/16	17 5/16	18 5/16	18 5/16	20 13/16	20 13/16	22 5/16	22 5/16	24 5/16	24 5/16	26 5/16	26 5/16
2"	'B'	48 7/16	42 3/16	49 15/16	43 11/16	50 11/16	46	53	47 3/8	59 3/8	50 5/16	65 5/16	60 5/16	74 5/16
	'C'	17 15/16	18 7/16	18 11/16	19 11/16	19 11/16	22 3/16	22 3/16	23 11/16	23 11/16	25 11/16	25 11/16	27 11/16	27 11/16
2 1/2"	'B'	N/A	42 15/16	50 11/16	44 7/16	51 7/16	46 3/4	53 3/4	48 1/8	60 1/8	51 1/16	66 1/16	61 1/16	75 1/16
	'C'	N/A	15 3/4	16	17	17	19 1/2	19 1/2	21	21	23	23	25	25
3"	'B'	N/A	N/A	52 9/16	46 5/16	53 5/16	48 5/8	55 5/8	50	62	52 15/16	67 15/16	62 15/16	76 15/16
	'C'	N/A	N/A	17	18	18	20 1/2	20 1/2	22	22	24	24	26	26
4"	'B'	N/A	N/A	N/A	48 5/16	55 5/16	50 5/8	57 5/8	52	64	54 15/16	69 15/16	64 15/16	78 15/16
	'C'	N/A	N/A	N/A	21	21	23 1/2	23 1/2	25	25	27	27	29	29
5"	'B'	N/A	N/A	N/A	N/A	N/A	50 5/8	57 5/8	52	64	54 15/16	69 15/16	64 15/16	78 15/16
	'C'	N/A	N/A	N/A	N/A	N/A	26 1/4	26 1/4	27 3/4	27 3/4	29 3/4	29 3/4	31 3/4	31 3/4



ISOMETRIC VIEW

- NOTES:**
- 1/ DIMENSIONS IN INCHES, AND SUBJECT TO CHANGE WITHOUT NOTICE.
  - 2/ DIM 'B', 'C' ARE TO BE APPROXIMATED ONLY, CONSULT FACTORY FOR TIGHT DIMENSIONS.



REV	DATE	BY	CHKD
01	04/12/2023	K. JIMENEZ	
02			
03			
04			

MATERIAL:	SIVSW - COVER		
FINISH:	MINIPACK SYSTEM - VERTICAL SW		
WEIGHT:	WATER 3W - PNEUMATIC OPERATED VALVE PACKAGE		
UNLESS OTHERWISE SPECIFIED DIMENSIONS ARE IN INCHES TOLERANCE	DWG NO.	REV.	
DECIMALS .XX ± .005	SIVSWWA-3W-DIM	02	
ANGULAR ± .5	SCALE: NA	SOF	SHEET: 2 OF 2
XXX ± .010 MAX SURF			

THE INFORMATION CONTAINED WITHIN THIS DRAWING IS PROPRIETARY AND THE SOLE PROPERTY OF ACE HEATERS, LLC. ANY REPRODUCTION IN PART OR AS A WHOLE WITHOUT THE WRITTEN PERMISSION OF ACE HEATERS, LLC IS PROHIBITED.