

Mega-Pack Packaged Storage Water Heater

Steam-to-Water or Water-to-Water Application

Packaged and Unpackaged Storage Water Heaters

Steam-to-Water or Water-to-Water Application



The Ace Series Packaged Storage Water Heaters are dependable and quiet. They provide peak load output and use off-peak boiler capacity. Units are available in a variety of configurations to meet a wide range of requirements for temperature rise and G.P.H. recovery.

Features

- Completely assembled storage water heaters with tube bundle or electric heating elements, automatic controls, valves, piping, circulating system, wiring, insulation and skid mounted
- Provides for peak load outputs and utilizes off peak boiler capacity
- Small, medium, or large storage volumes available in vertical and horizontal models
- Ace Temp Control System
- Tube bundle readily accessible without moving heater, shell or foundation
- Quality components for high performance



Standard Equipment

Tank

- ASME Section VIII Div I vessel
- National Board registered
- 125 or 150 psig design working pressure
- 12”x 16” manway on 42” diameter and larger diameter tanks; inspection openings for all others
- Carbon steel fittings
- Lifting straps or lugs
- Drain fittings
- Anodes on glass lined tanks

Tube Bundle

- 150 psig design working pressure
- 2 pass tube bundle design using SB-75 seamless copper U-tube
- Carbon steel cap and tube sheet

Support

- Vertical: pipe legs
- Horizontal: saddles

Controls

- Steam-to-water: Electric, Pneumatic or Pilot-operated control valve
- Water-to-water: Self-operating, Electric or Pneumatic control valve
- Temperature-Pressure gauge
- High limit aquastat
- 125 or 150 psig ASME pressure relief valve
- ACE Temp Control System, including all bronze circulating pump with copper piping and isolation valve
- Steam to water model only: F&T steam trap, vacuum breaker, and inlet strainer

Insulation & Jacketing

- 22 gauge galvanized steel jacket, backed by 1-1/2” of insulation
- Painted with primer

Optional Equipment

Tank

- Lining: Cement (180°F), Glass (160°F), Pre-krete (350°F), Unlined
- Stainless steel tank

Tube Bundle

- Double wall copper or cupro-nickel (90/10) tubing
- Single wall cupro-nickel (90/10), 304 or 316L stainless steel tubing
- 304 stainless steel cap and tube sheet
- High temp water applications
- 4 or 6 pass tube bundle design

Support

- Vertical: Angle legs and ring base
- No support / leg coupling, only for unpackaged
- Seismic support

Controls

- Pneumatic or electric control valve, with temperature controller NEMA 1 control panel and inlet strainer
- Unpackaged
- Double safety solenoid dump valve
- Building automation relays
- Alarm bell with silencer switch

Digital Controls

- Digital panel¹
- Remote Setpoint panel¹
- Building Automation panel¹
- Ace Communication Gateway¹

¹For pneumatic and electric control valve only.

Insulation & Jacketing

- Mirror finish stainless steel jacketing
- 2" and 3" thick insulation



Digital Panel

Uses microprocessor based PID loop controller with RTD temperature sensor. Controller includes digital outlet temperature readout on two line/four button user interface, auto tuning, manual output control, high/low deviation alarm, 4-20mA outlet temperature feedback signal and keylock functions.

Remote Setpoint Panel

Digital panel with operating control capable of receiving 4-20mA control signal to adjust the setpoint and high temperature alarm setpoint. Used with Building Management System (BMS) or outdoor reset control.

Building Automation Panel

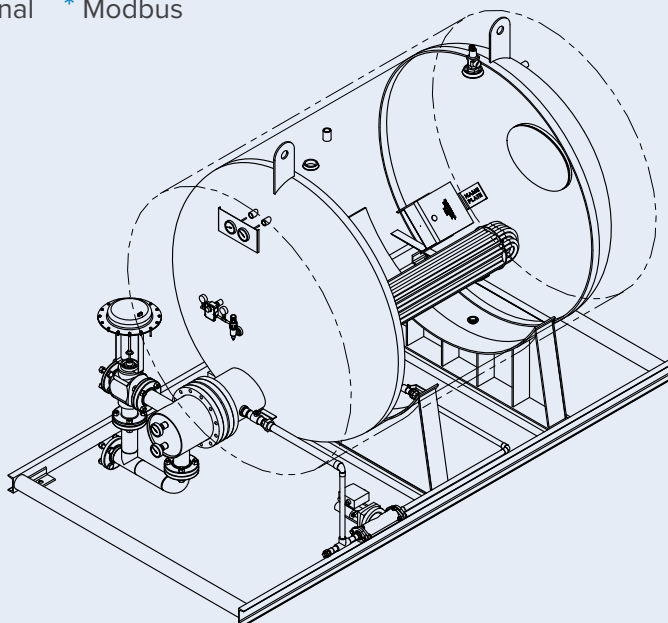
RS-485 Modbus Communication enabled digital panel can be used to communicate between Building Management System and/or PLC. It can be used to read and write setpoint temperature, firing rate and PID parameters of the unit. Can be tied in to LonWorks and BACnet system through gateway provided from factory or by others.

ACE Communication Gateway

Standalone module is designed to allow Modbus enabled ACE and ATLAS Series products to interface to a customer's BACnet, Johnson N2 or LonWorks based Building Automation System.

	Standard Control	Digital Control	BMS	BMS with Gateway	Remote Set Point
Pilot	✓	✗	✗	✗	✗
Pneumatic	✓	○	○	○	○
Electric	✗	✓	*	○	○

✓ Available ✗ Not Available ○ Optional * Modbus



ASME

Dimensions

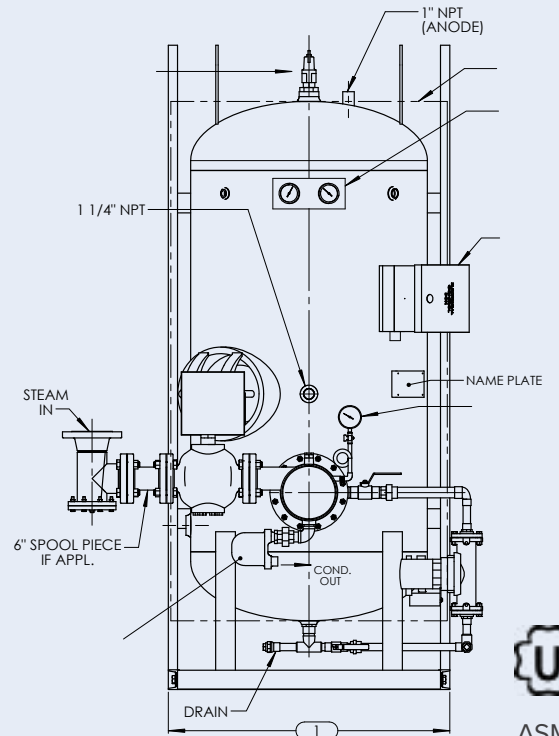
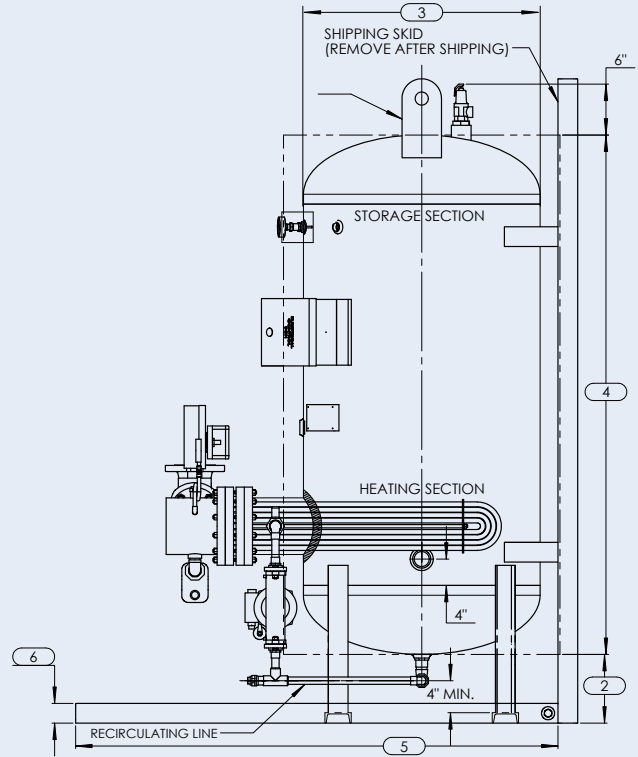
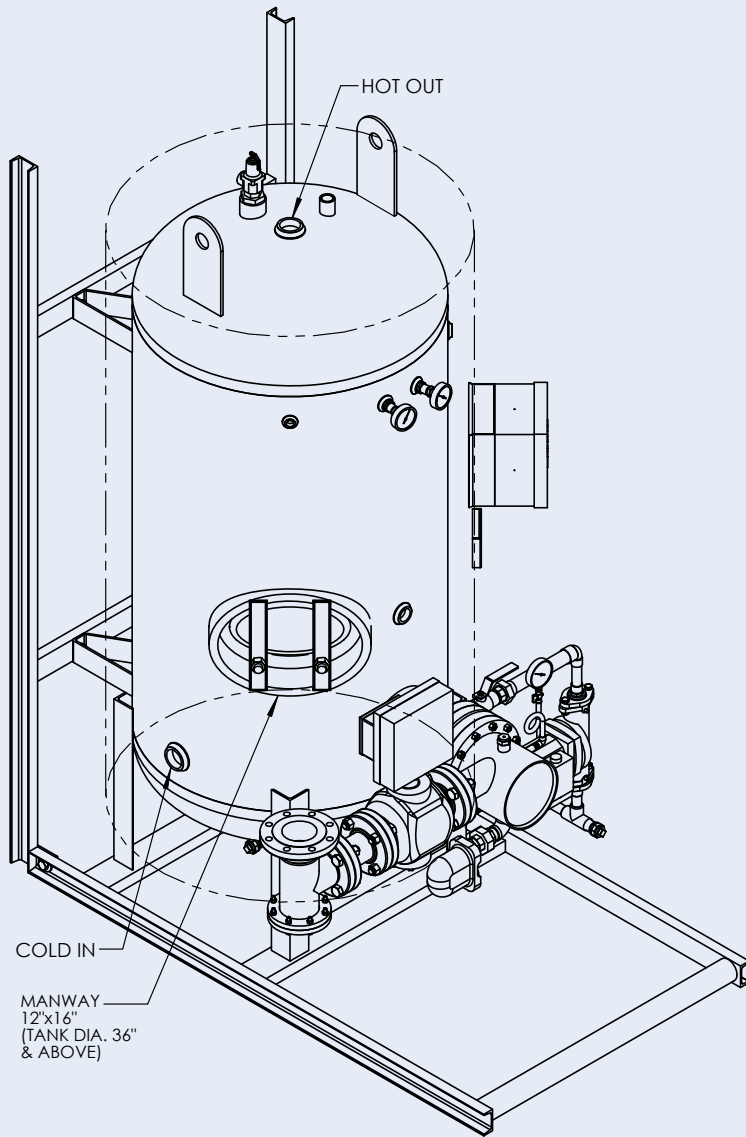
Packaged Storage Water Heaters

Steam-to-Water Application

VERTICAL	SHELL SIZES	CAPACITY (GAL.)	DIMENSION IN INCHES						
			1	2		3	4	5	6
				ANGLE LEGS	PIPE LEGS				
				WITH OR WITHOUT PADS					
1802	36	25	8	8	18	36	47 3/8	3	
1803	49					48			
1804	62					60			
1805	75					72			
2404	117	31	8	8 1/2	24	63	59 7/8	3	
2405	140					75			
2406	163					87			
2407	186					99			
3004	190	37	8	11	30	66	67 7/8	3	
3005	225					78			
3006	260					90			
3007	295					102			
3604	275	43	8	9 1/2	36	69	76 3/8	3	
3605	325					81			
3606	375					93			
3607	425					105			
3608	475					117			
4204	390	49	8	13 1/2	42	72	82 3/8	3	
4205	460					84			
4206	530					96			
4207	600					108			
4208	670					120			
4804	510	55 1/4	8	13	48	75	89 3/8	3	
4805	605					87			
4806	700					99			
4807	795					111			
4808	890					123			
5405	740	61 1/4	8	11	54	91	95 3/8	4	
5406	860					103			
5407	980					115			
5408	1100					127			
6005	940	67 1/4	8	11	60	93	101 3/8	4	
6006	1085					105			
6007	1230					117			
6008	1375					129			
6009	1520					141			
6605	1155	73 1/4	8	12	66	95	107 3/8	4	
6606	1330					107			
-	-					-			
-	-					-			
7205	1405	79 1/2	8	12 1/2	72	98	114 3/8	4	
7206	1615					110			
-	-					-			
-	-					-			
-	-					-			

Dimensions are in inches and are subject to production tolerances, subject to changes. Contact Factory for custom sizing.

VERTICAL



ASME

Dimensions

Packaged Storage Water Heaters

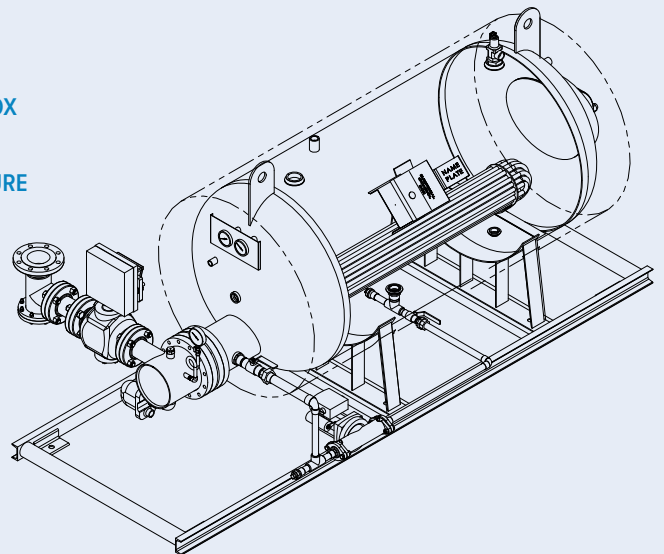
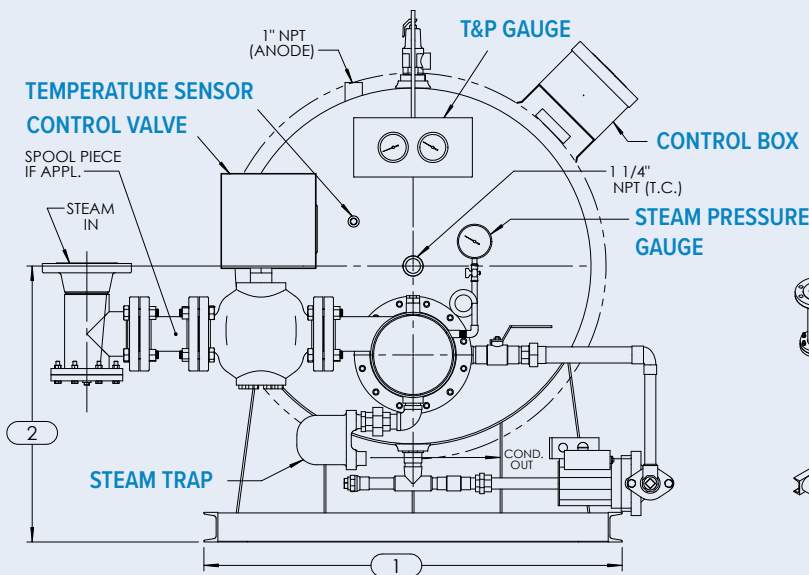
Steam-to-Water Application

HORIZONTAL

DIMENSION	SHELL SIZES					SHELL SIZES					SHELL SIZES					SHELL SIZES					SHELL SIZES				
	1802	1803	1804	1805		2404	2405	2406	2407		3004	3005	3006	3007		3604	3605	3606	3607	3608	4204	4205	4206	4207	4208
1	24 1/2					30 1/2					36 1/2					42 1/2					48 1/2				
2	18 1/2					21 1/2					25					28					31				
3	18					24					30					36					42				
4	34	46	58	70		61	73	85	97		64	76	88	100		67	79	91	103	115	70	82	94	106	118
5	62	74	86	98		95	107	119	131		100	112	124	136		106	118	130	142	154	109	121	133	145	157
6	3					3					3					3					3				
GAL.	36	49	62	75		117	140	163	186		190	225	260	295		275	325	375	425	475	390	460	530	600	670

DIMENSION	SHELL SIZES					SHELL SIZES					SHELL SIZES					SHELL SIZES					SHELL SIZES				
	4804	4805	4806	4807	4808	5405	5406	5407	5408		6005	6006	6007	6008	6009	6605	6606	6607	6608	6609	7205	7206	7207	7208	7209
1	54 1/2					60 3/4					66 3/4					72 3/4					78 3/4				
2	34					37 1/2					40 1/2					43 1/2					46 1/2				
3	48					54					60					66					72				
4	73	85	97	109	121	88	100	112	124		91	103	115	127	139	94	106	118	130	144	97	109	121	133	147
5	112	124	136	148	160	127	139	151	163		130	142	154	166	178	133	145	157	169	181	136	148	160	172	184
6	3					4					4					4					4				
GAL.	510	605	700	795	890	740	860	980	1100		940	1085	1230	1375	1520	1155	1330	1505	1680	1855	1405	1615	1825	2035	2245

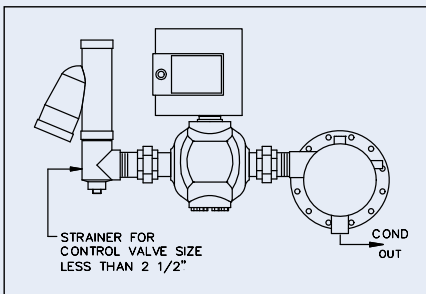
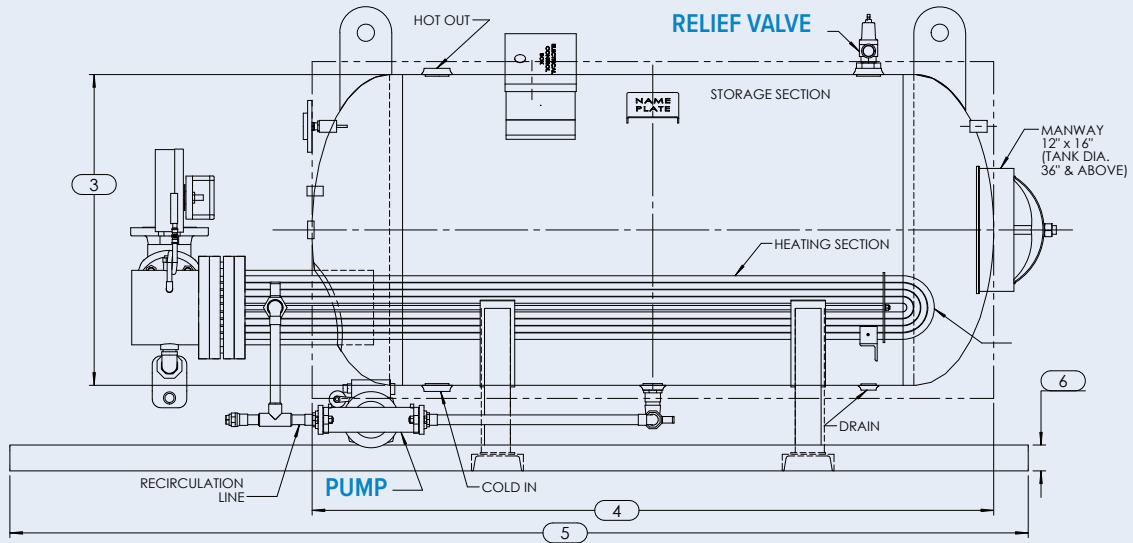
Dimensions are in inches and are subject to production tolerances, subject to changes. Contact Factory for custom sizing.



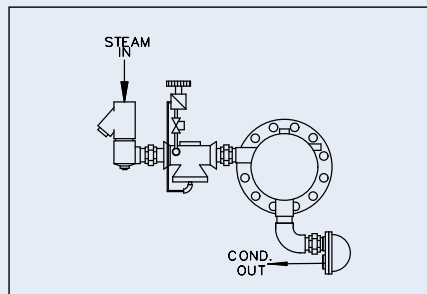
HORIZONTAL



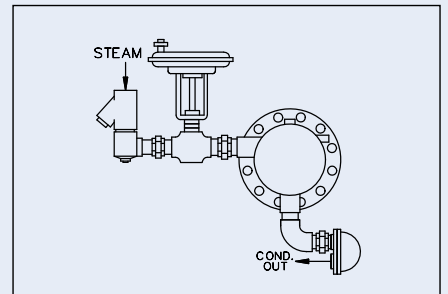
ASME



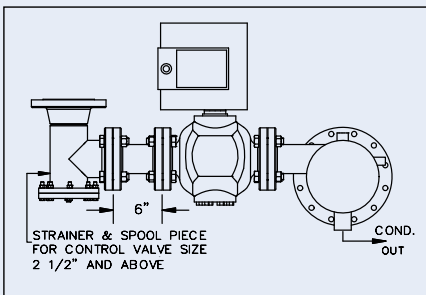
**STEAM ELECTRIC 2-WAY
2-PASS THREADED CONNECTION**



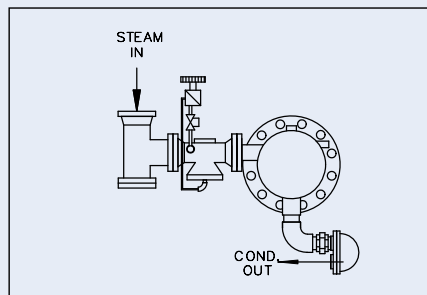
**STEAM PILOT 2-WAY
2-PASS THREADED CONNECTION**



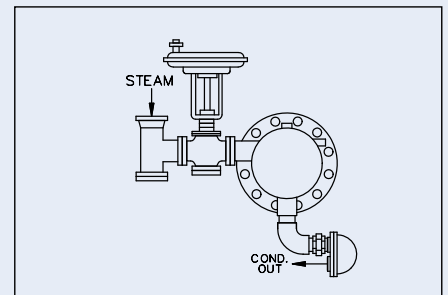
**STEAM PNEUMATIC 2-WAY
2-PASS THREADED CONNECTION**



**STEAM ELECTRIC 2-WAY
2-PASS FLANGED CONNECTION**



**STEAM PILOT 2-WAY
2-PASS THREADED CONNECTION**



**STEAM PNEUMATIC 2-WAY
2-PASS THREADED CONNECTION**

Dimensions

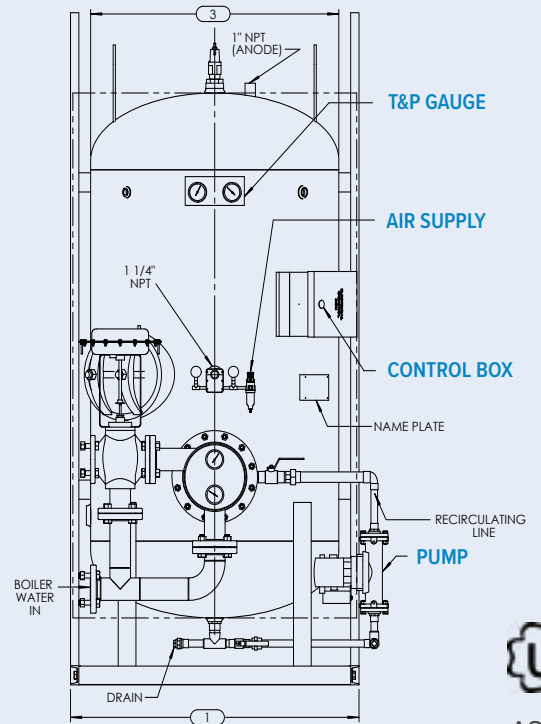
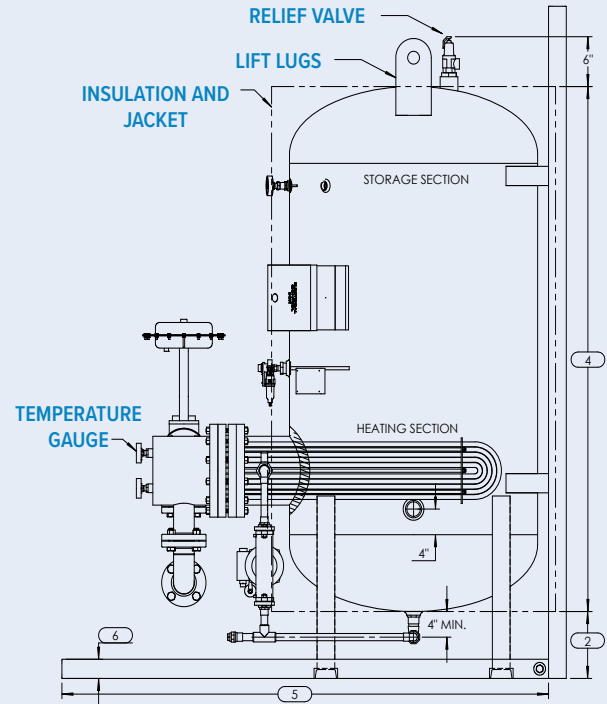
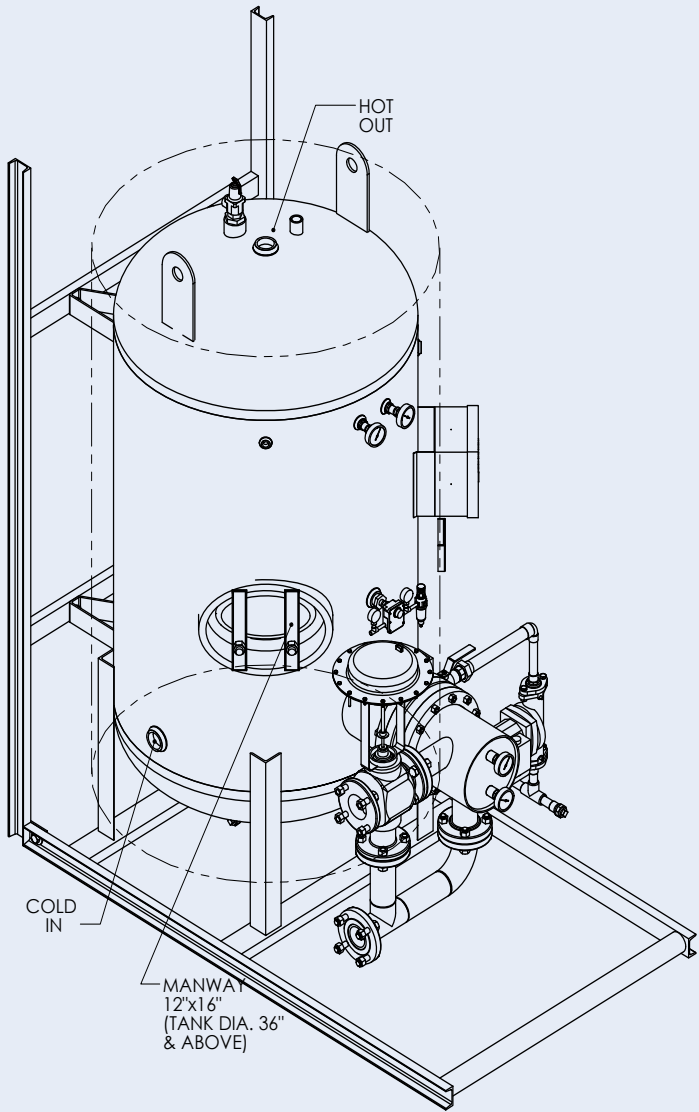
Packaged Storage Water Heaters

Water-to-Water Application

VERTICAL	SHELL SIZES	CAPACITY (GAL.)	DIMENSION IN INCHES						
			1	2		3	4	5	6
				ANGLE LEGS	PIPE LEGS				
				WITH OR WITHOUT PADS					
1802	36	25	8	8	18	36	47 3/8	3	
1803	49					48			
1804	62					60			
1805	75					72			
2404	117	31	8	8 1/2	24	63	59 7/8	3	
2405	140					75			
2406	163					87			
2407	186					99			
3004	190	37	8	11	30	66	67 7/8	3	
3005	225					78			
3006	260					90			
3007	295					102			
3604	275	43	8	9 1/2	36	69	76 3/8	3	
3605	325					81			
3606	375					93			
3607	425					105			
3608	475					117			
4204	390	49	8	13 1/2	42	72	82 3/8	3	
4205	460					84			
4206	530					96			
4207	600					108			
4208	670					120			
4804	510	55 1/4	8	13	48	75	89 3/8	3	
4805	605					87			
4806	700					99			
4807	795					111			
4808	890					123			
5405	740	61 1/4	8	11	54	91	95 3/8	4	
5406	860					103			
5407	980					115			
5408	1100					127			
6005	940	67 1/4	8	11	60	93	101 3/8	4	
6006	1085					105			
6007	1230					117			
6008	1375					129			
6009	1520					141			
6605	1155	73 1/4	8	12	66	95	107 3/8	4	
6606	1330					107			
-	-					-			
-	-					-			
7205	1405	79 1/2	8	12 1/2	72	98	114 3/8	4	
7206	1615					110			
-	-					-			
-	-					-			
-	-					-			

Dimensions are in inches and are subject to production tolerances, subject to changes. Contact Factory for custom sizing.

VERTICAL



Dimensions

Packaged Storage Water Heaters

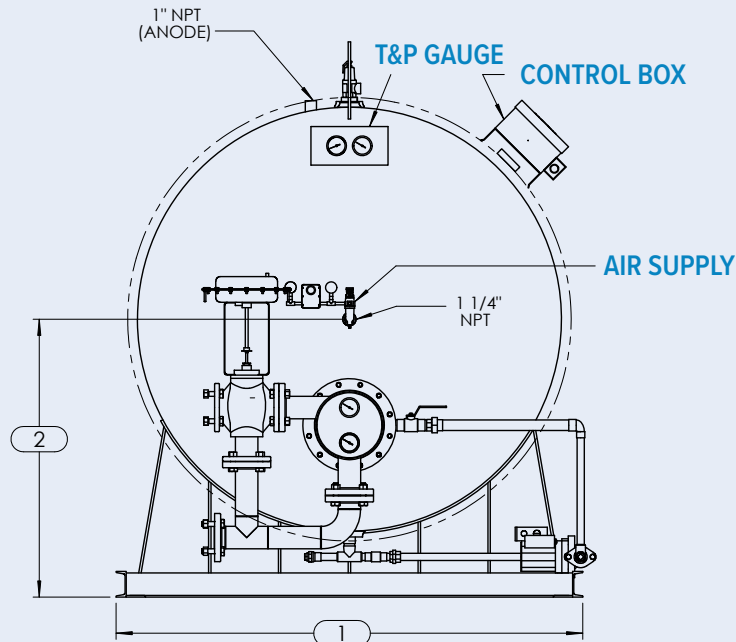
Water-to-Water Application

HORIZONTAL

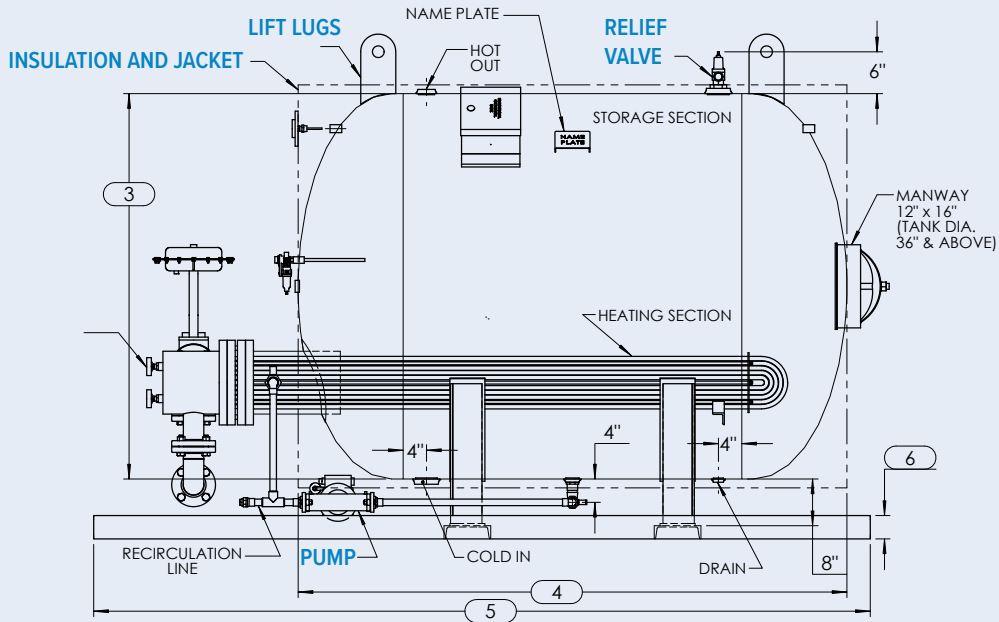
DIMENSION	SHELL SIZES						SHELL SIZES						SHELL SIZES						SHELL SIZES										
	1802	1803	1804	1805			2404	2405	2406	2407			3004	3005	3006	3007			3604	3605	3606	3607	3608		4204	4205	4206	4207	4208
1	24 1/2					1	30 1/2					1	36 1/2					1	42 1/2					1	48 1/2				
2	18 1/2					2	21 1/2					2	25					2	28					2	31				
3	18					3	24					3	30					3	36					3	42				
4	34	46	58	70		4	61	73	85	97	4	64	76	88	100	4	67	79	91	103	115	4	70	82	94	106	118		
5	62	74	86	98		5	95	107	119	131	5	100	112	124	136	5	106	118	130	142	154	5	109	121	133	145	157		
6	3					6	3					6	3					6	3					6	3				
GAL.	36	49	62	75			117	140	163	186		190	225	260	295		275	325	375	425	475		390	460	530	600	670		

DIMENSION	SHELL SIZES						SHELL SIZES					SHELL SIZES					SHELL SIZES					SHELL SIZES						
	4804	4805	4806	4807	4808		5405	5406	5407	5408		6005	6006	-	-		-	6605	6606	-		-	-	7205	7206	-	-	-
1	54 1/2					1	60 3/4				1	66 3/4				1	72 3/4				1	78 3/4						
2	34					2	37 1/2				2	40 1/2				2	43 1/2				2	46 1/2						
3	48					3	54				3	60				3	66				3	72						
4	73	85	97	109	121	4	88	100	112	124	4	91	103	115	127	139	4	94	106	-	-	-	4	97	109	-	-	-
5	112	124	136	148	160	5	127	139	151	163	5	130	142	154	166	178	5	133	145	-	-	-	5	136	148	-	-	-
6	3					6	4				6	4				6	4				6	4						
GAL.	510	605	700	795	890		740	860	980	1100		940	1085	1230	1375	1520		1155	1330	-	-	-		1405	1615	-	-	-

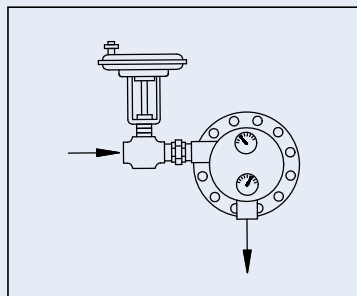
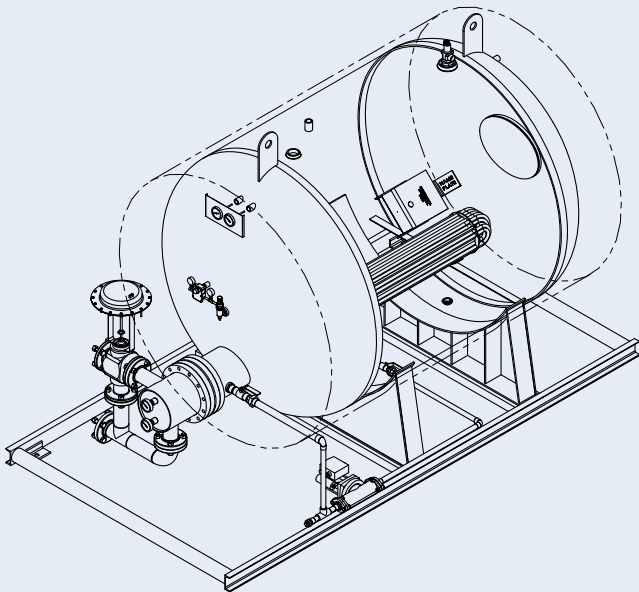
Dimensions are in inches and are subject to production tolerances, subject to changes. Contact Factory for custom sizing.



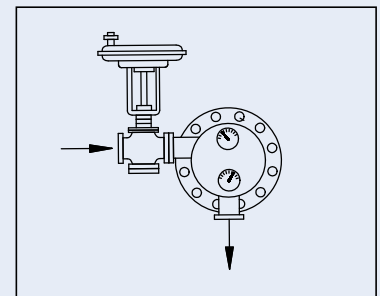
HORIZONTAL



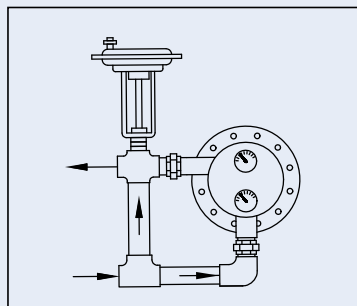
ASME



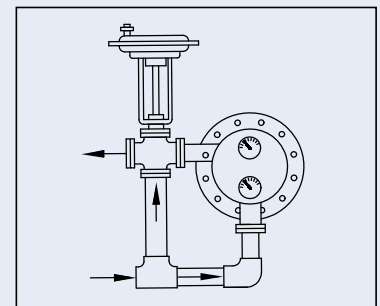
**WATER PNEUMATIC 2-WAY
2-PASS THREADED CONNECTION**



**WATER PNEUMATIC 2-WAY
2-PASS FLANGED CONNECTION**



**WATER PNEUMATIC 3-WAY
2-PASS THREADED CONNECTION**



**WATER PNEUMATIC 3-WAY
2-PASS FLANGED CONNECTION**

Dimensions

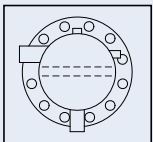
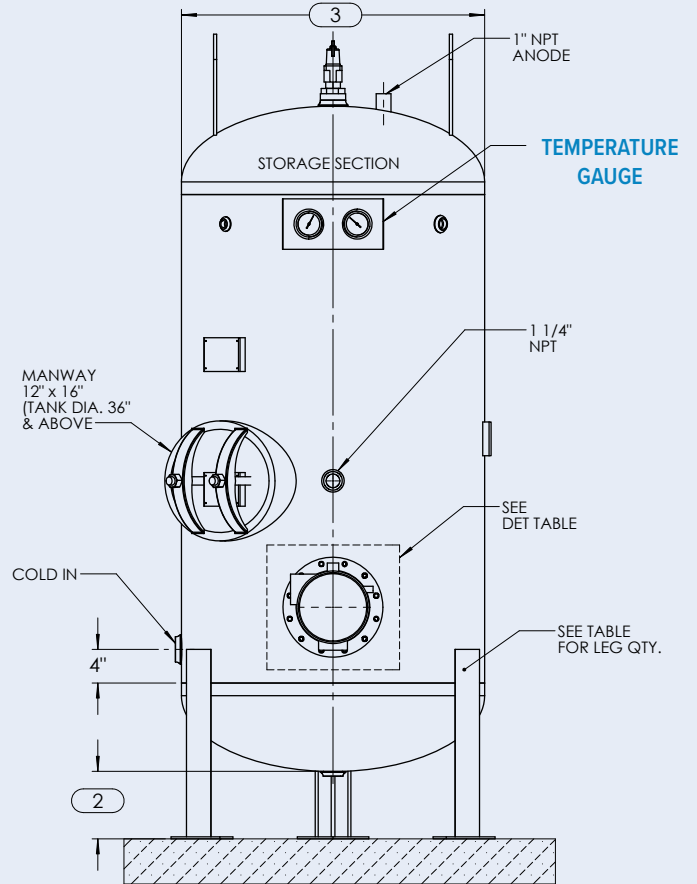
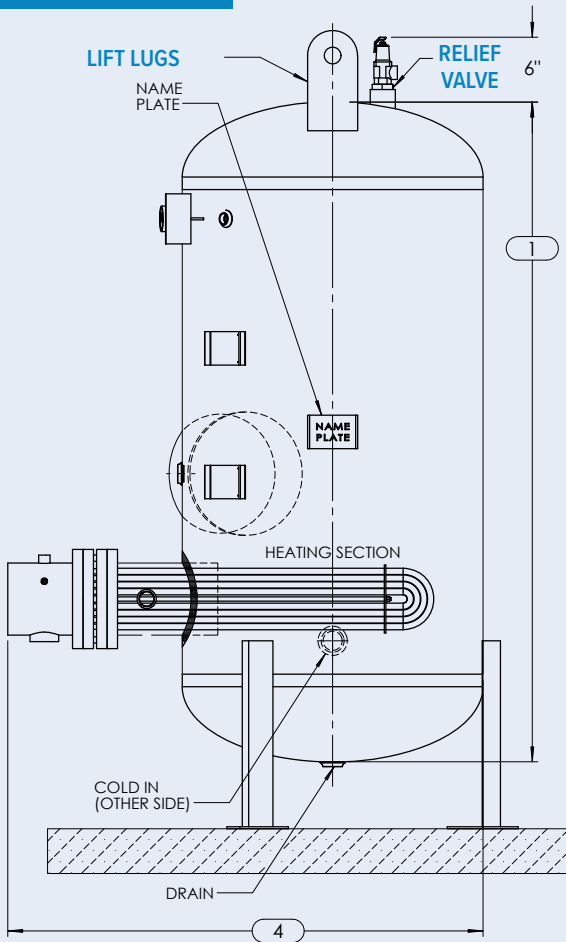
Unpackaged Storage Water Heaters

Steam-to-Water or Water-to-Water Application

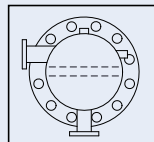
VERTICAL	SHELL SIZES	CAPACITY (GAL.)	DIMENSION IN INCHES						
			1	2		3	4	LEG QTY.	
				ANGLE LEGS W/ PADS	PIPE LEGS W/ PADS			ANGLE LEGS W/ PADS	PIPE LEGS W/ PADS
ASME 125 or 150 psig Storage Water Heater with Standard Fittings	1802	36	36						
	1803	49	48	8	8	18	38 MAX.	3	3
	1804	62	60						
	1805	75	72						
	2404	117	63	8	8 1/2	24	50 MAX.	3	3
	2405	140	75						
	2406	163	87						
	2407	186	99						
	3004	190	66						
	3005	225	78	8	11	30	58 MAX.	3	3
	3006	260	90						
	3007	295	102						
	3604	275	69						
	3605	325	81	8	9 1/2	36	66 MAX.	3	3
	3606	375	93						
	3607	425	105						
	3608	475	117						
	4204	390	72						
	4205	460	84	8	13 1/2	42	72 MAX.	3	3
	4206	530	96						
	4207	600	108						
	4208	670	120						
	4804	510	75						
	4805	605	87	8	13	48	78 MAX.	4	3
	4806	700	99						
	4807	795	111						
	4808	890	123						
	5405	740	91	8	11	54	84 MAX.	4	3
	5406	860	103						
	5407	980	115						
	5408	1100	127						
	6005	940	93						
	6006	1085	105	8	11	60	90 MAX.	4	4
	6007	1230	117						
	6008	1375	129						
	6009	1520	141						
	6605	1155	95						
	6606	1330	107	8	12	66	96 MAX.	4	4
	-	-	-						
	-	-	-						
	-	-	-						
	7205	1405	98	8	12 1/2	72	102 MAX.	4	4
	7206	1615	110						
	-	-	-						
	-	-	-						
	-	-	-						

Dimensions are in inches and are subject to production tolerances, subject to changes. Contact Factory for custom sizing.

VERTICAL

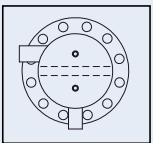


**STEAM 2-PASS
CAP
THR. CONN.**

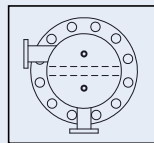


**STEAM 2-PASS
CAP
FLG. CONN.**

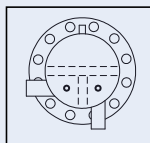
2-pass bundles are furnished for all steam units. Multi-pass bundles are normally furnished for all hot water units. 2-pass bundles will be furnished if heating medium or boiler water flow is unknown.



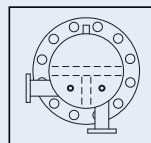
**WATER 2-PASS
CAP
THR. CONN.**



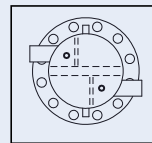
**WATER 2-PASS
CAP
FLG. CONN.**



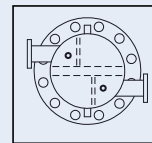
**WATER 4-PASS
CAP
THR. CONN.**



**WATER 4-PASS
CAP
FLG. CONN.**



**WATER 6-PASS
CAP
THR. CONN.**



**WATER 6-PASS
CAP
FLG. CONN.**



ASME

Dimensions

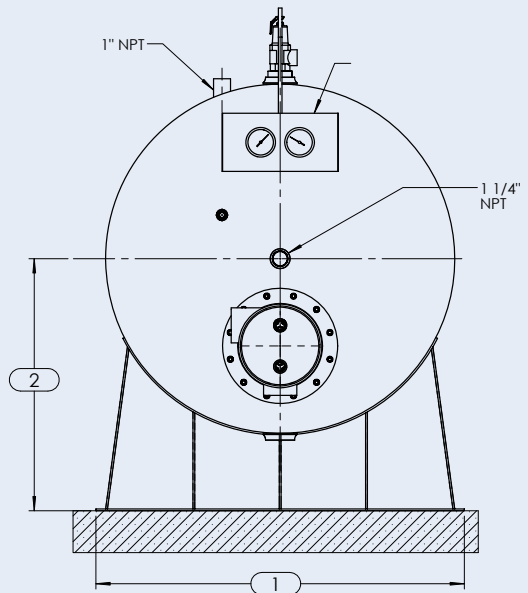
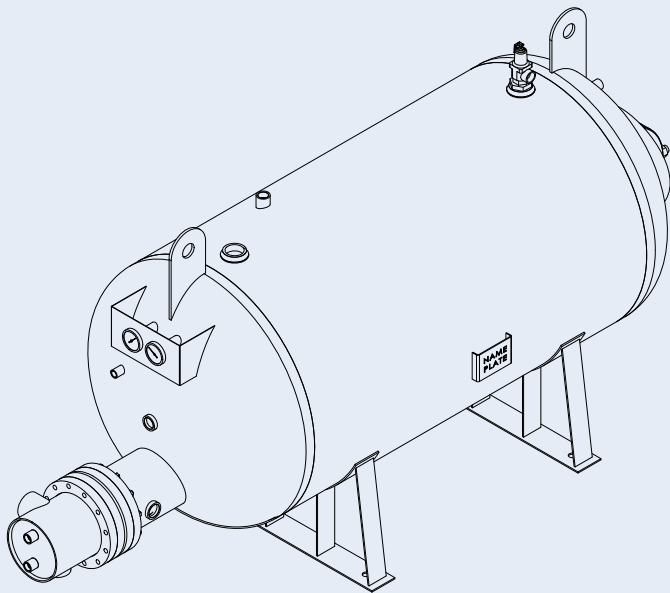
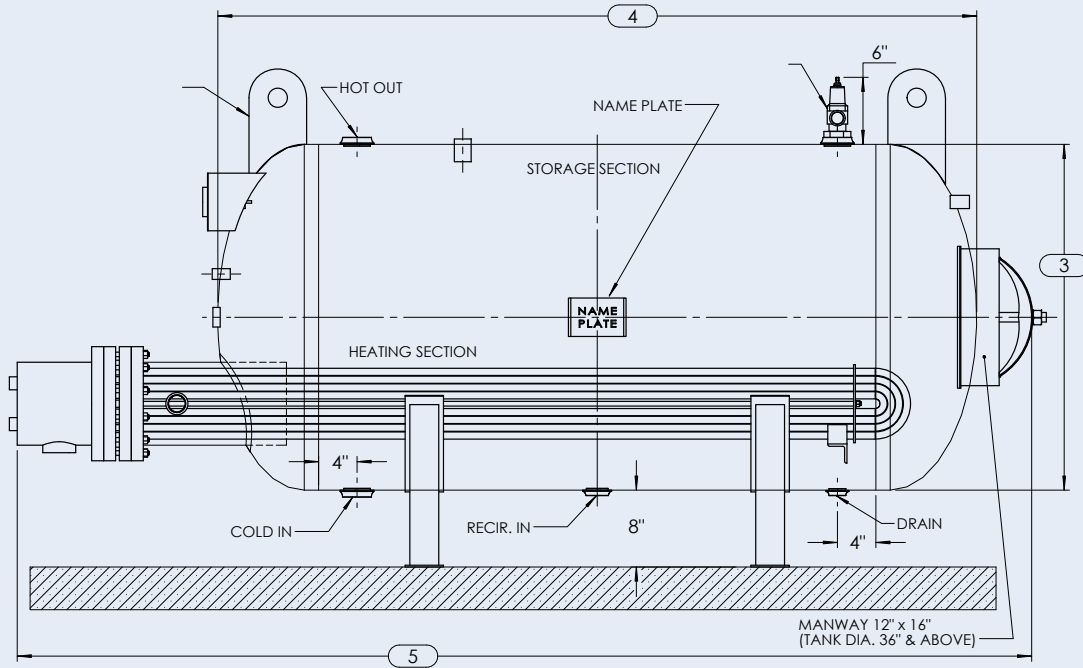
Unpackaged Storage Water Heaters

Steam-to-Water or Water-to-Water Application

HORIZONTAL	SHELL SIZES	CAPACITY (GAL.)	DIMENSION IN INCHES				
			1	2	3	4	5
ASME 125 or 150 psig Storage Water Heater with Standard Fittings	1802	36	20	17	18	34	59 Max.
	1803	49				46	71 Max.
	1804	62				58	83 Max.
	1805	75				70	95 Max.
	2404	117	26	20	24	61	92 Max.
	2405	140				73	104 Max.
	2406	163				85	116 Max.
	2407	186				97	128 Max.
	3004	190	32	23	30	64	97 1/2 Max.
	3005	225				76	109 1/2 Max.
	3006	260				88	121 1/2 Max.
	3007	295				100	133 1/2 Max.
	3604	275	38	26	36	67	102 1/2 Max.
	3605	325				79	114 1/2 Max.
	3606	375				91	126 1/2 Max.
	3607	425				103	138 1/2 Max.
	3608	475				115	150 1/2 Max.
	4204	390	44	29	42	70	105 1/2 Max.
	4205	460				82	117 1/2 Max.
	4206	530				94	129 1/2 Max.
	4207	600				106	141 1/2 Max.
	4208	670				118	153 1/2 Max.
	4804	510	50	32	48	73	108 1/2 Max.
	4805	605				85	120 1/2 Max.
	4806	700				97	132 1/2 Max.
	4807	795				109	144 1/2 Max.
	4808	890				121	156 1/2 Max.
	5405	740	56	35	54	88	124 1/2 Max.
	5406	860				100	136 1/2 Max.
	5407	980				112	148 1/2 Max.
	5408	1100				124	160 1/2 Max.
	6005	940	62	38	60	91	126 1/2 Max.
6006	1085	103				138 1/2 Max.	
6007	1230	115				150 1/2 Max.	
6008	1375	127				162 1/2 Max.	
6009	1520				139	174 1/2 Max.	
6605	1155	68	41	66	94	128 1/2 Max.	
6606	1330				106	140 1/2 Max.	
-	-				-	-	
-	-				-	-	
7205	1405	74	44	72	97	131 1/2 Max.	
7206	1615				109	143 1/2 Max.	
-	-				-	-	
-	-				-	-	

Dimensions are in inches and are subject to production tolerances, subject to changes. Contact Factory for custom sizing.

HORIZONTAL



ASME

Ace Series Storage Tanks

Glass • Pre-Krete • Cement • Unlined



The Ace Series Storage Tanks are designed and manufactured using only the highest quality ASME code certified materials for all types of volume hot water requirements. A broad selection of tank linings provide extended tank life and ensures clean, safe potable water.

Features

- All fabrication, welding, and testing performed in strict accordance with ASME codes, and continuously checked by ASME/National Board Inspections
- Effective circulation of makeup and heater water
- Maximum hot water storage and “draw” capacity
- Broad selection of tank linings:
 - Unlined - Low cost storage of water for non-potable and non-sanitary use
 - Glass - Porcelain glass enamel for temperatures up to 160°F
 - Cement - Heavy duty, resist cracking, good for temperatures to 180°F
 - Pre-Krete - very suitable for soft, acidic or low pH water, for temperature up to 350°F



Standard Equipment

- Quality carbon steel construction, diameter 18” to 72”
- Choice of:
 - SJ: 150 psig ASME Section VIII tank
 - Vertical or horizontal orientation
- Inspection openings for all SJ tank sizes
18” to 36”;12”x 16” manway for SD/SJ
tank sizes 42” to 72”
- Unlined interior for SJ tanks
- Glass lined tank includes magnesium anodes
- Shop primered exterior
- Carbon steel fittings for SJ tanks
- Pipe leg couplings on vertical models
- Lift lugs

Optional Equipment

- Cement, pre-krete lining, or glass on SJ tanks
- Vertical support
 - Pipe legs (with or without pads)
 - Ring base
 - Angle iron legs (with or without pads)
- Horizontal support
 - Saddles (welded or loose)
- Skid mounted, 1-1/2”,2” or 3” insulation & jacketing
 - 22 gauge galvanized steel jacket
 - Mirror finish stainless steel jacket
- Flanged connection
- 304 or 316L stainless steel fittings
- 11”x 15” manways for 30” & 36” tanks
- Seismic support



ASME



ASME

Dimensions

Unpackaged Storage Water Heaters

Steam-to-Water or Water-to-Water Application

TANK MODEL	SIZE DIA. x O.A.L. (Inches)	CAPACITY (Gallons)	APPROXIMATE SHIPPING WEIGHT						TANK SURFACE AREA (Sq.Ft.)
			U-UNLINED G-GLASS		A-CEMENT		K-PRE KRETE		
				SJ	SD	SJ	SD	SJ	
	18" Dia.	13 Gal./ft.		25					5 sq.ft./ft.
1802	36	36		100#		N/A		N/A	15 sq.ft.
1803	48	49		125#		N/A		N/A	20 sq.ft.
1804	60	62		150#		N/A		N/A	25 sq.ft.
1805	72	75		175#		N/A		N/A	30 sq.ft.
	24" Dia.	23 Gal./ft.		40 #/ft.					6 sq.ft./ft.
2404	63	117		N/A		N/A		N/A	37 sq.ft.
2405	75	140		N/A		N/A		N/A	43 sq.ft.
2406	87	163		N/A		N/A		N/A	49 sq.ft.
2407	99	186		N/A		N/A		N/A	55 sq.ft.
	30" Dia.	35 Gal./ft.		61 #/ft.		82 #/ft.		114 #/ft.	8 sq.ft./ft.
3004	66	190		362#		494#		747#	47 sq.ft.
3005	78	225		410#		576#		861#	55 sq.ft.
3006	90	260		458#		658#		975#	63 sq.ft.
3007	102	295		506#		740#		1,089#	71 sq.ft.
	36" Dia.	50 Gal./ft.		100 #/ft.		130 #/ft.		175 #/ft.	10 sq.ft./ft.
3604	69	275		621#		801#		1,071#	60 sq.ft.
3605	81	325		695#		905#		1,220#	70 sq.ft.
3606	93	375		769#		1,009#		1,369#	80 sq.ft.
3607	105	425		843#		1,113#		1,518#	90 sq.ft.
3608	117	475		917#		1,217#		1,667#	100 sq.ft.
	42" Dia.	70 Gal./ft.		117 #/ft.		159 #/ft.		222 #/ft.	11 sq.ft./ft.
4204	72	390		765#		999#		1,350#	75 sq.ft.
4205	84	460		882#		1,153#		1,572#	86 sq.ft.
4206	96	530		999#		1,307#		1,794#	97 sq.ft.
4207	108	600		1,116#		1,461#		2,016#	108 sq.ft.
4208	120	670		1,233#		1,615#		2,238#	119 sq.ft.
	48" Dia.	95 Gal./ft.		157 #/ft.		211 #/ft.		292 #/ft.	12 sq.ft./ft.
4804	75	510		1,012#		1,306#		1,747#	85 sq.ft.
4805	87	605		1,142#		1,476#		2,011#	97 sq.ft.
4806	99	700		1,272#		1,646#		2,275#	109 sq.ft.
4807	111	795		1,402#		1,816#		2,539#	121 sq.ft.
4808	123	890		1,532#		1,988#		2,803#	133 sq.ft.
	54" Dia.	120 Gal./ft.		210 #/ft.		279 #/ft.		383 #/ft.	14 sq.ft./ft.
5405	91	740		1,650#		2,079#		2,725#	110 sq.ft.
5406	103	860		1,826#		2,324#		3,074#	124 sq.ft.
5407	115	980		2,002#		2,569#		3,423#	138 sq.ft.
5408	127	1,100		2,178#		2,814#		3,772#	152 sq.ft.
	60" Dia.	145 Gal./ft.		235 #/ft.		319 #/ft.		445 #/ft.	15 sq.ft./ft.
6005	93	940		1,912#		2,428#		3,202#	130 sq.ft.
6006	105	1,085		2,107#		2,707#		3,607#	145 sq.ft.
6007	117	1,230		2,302#		2,986#		4,012#	160 sq.ft.
6008	129	1,375		2,497#		3,265#		4,417#	175 sq.ft.
6009	141	1,520		2,692#		3,544#		4,822#	190 sq.ft.
	66" Dia.	175 Gal./ft.		257 #/ft.		359 #/ft.		512 #/ft.	17 sq.ft./ft.
6605	95	1,155		2,172#		2,790#		3,717#	141 sq.ft.
6606	107	1,330		2,429#		3,149#		4,229#	158 sq.ft.
	72" Dia.	210 Gal./ft.		282 #/ft.		402 #/ft.		582 #/ft.	19 sq.ft./ft.
7205	98	1,405		2,669#		3,383#		4,454#	162 sq.ft.
7206	110	1,615		2,950#		3,784#		5,035#	181 sq.ft.

ATAHCO CEMENT (C)

Cement lining shall be ATAHCO™ as supplied by ACE HEATERS, or an approved equal. The inside surface of the tank shall be thoroughly cleaned prior to application. The entire surface shall then be coated with low soluble cement to a minimum thickness of 1/4" for tanks 48" diameter and under; and 3/8" thick for tanks 54" in diameter and over. The cement shall be of a type that resists corrosion and shall have the same coefficient of expansion as the steel shell. Suitable for potable water up to a maximum of 180°F.

EPOXY (E)

The epoxy lining is NFS Certified for hot water potable systems. Designed for long-term corrosion protection as well as resistant to steam out processes. Suitable for temperatures up to 203°F.

PRE-KRETE (K)

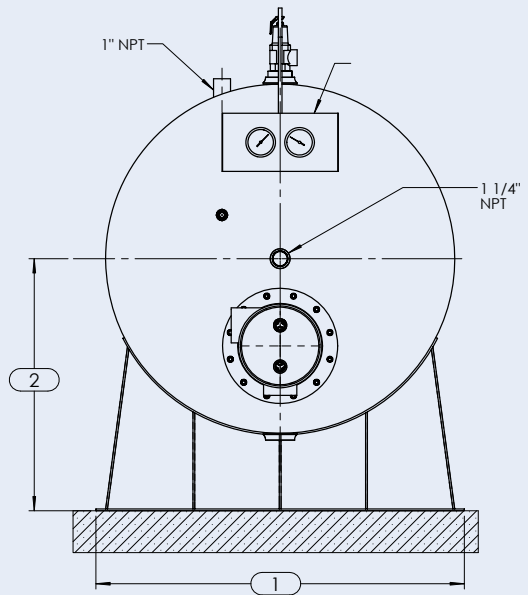
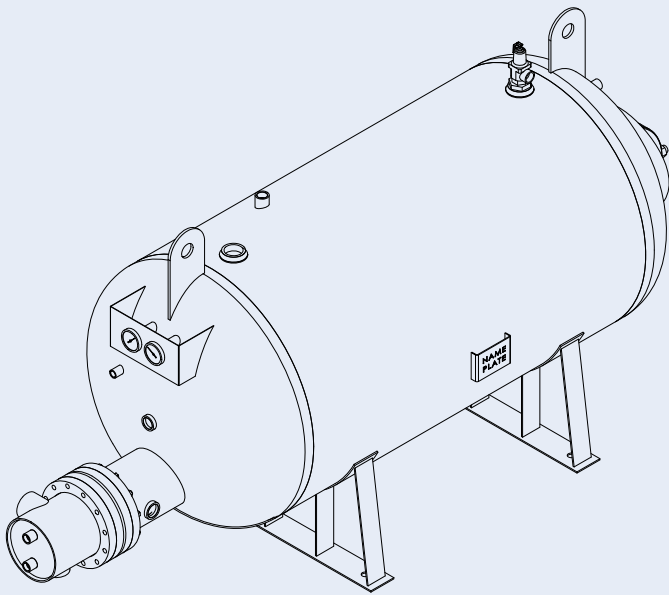
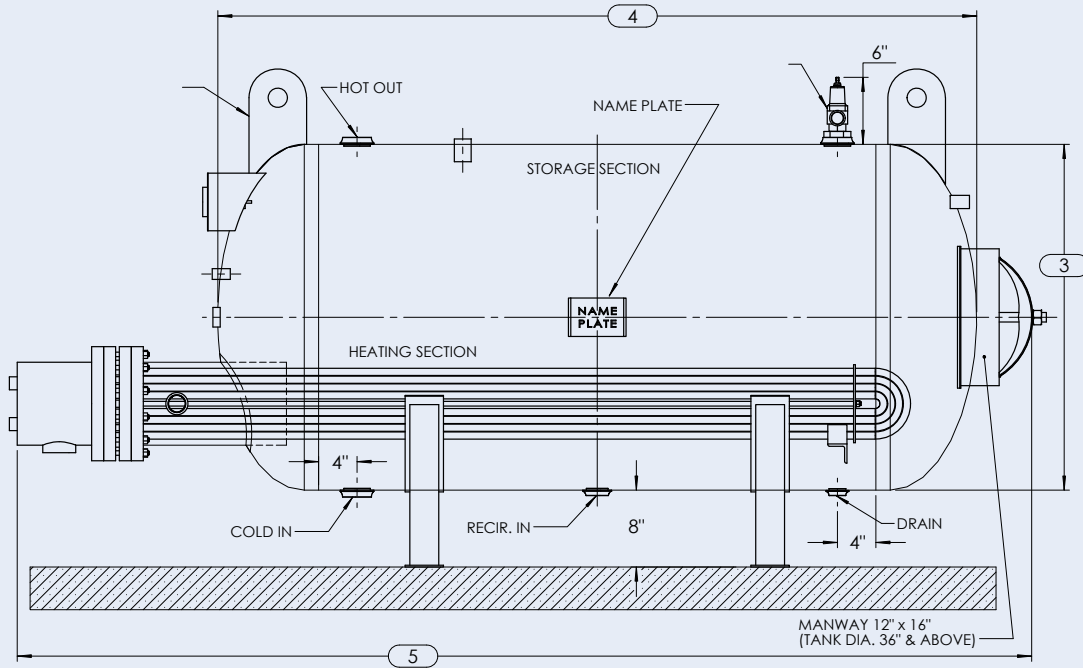
An alternate to ATAHCO™ Cement, PRE-KRETE G-8 lining is suitable for storage of soft water with pH factor below 7, acidic water conditions. For steam condensate or applications with pH factor of 7 or greater, use PRE-KRETE C-17. The inside surface of the tank shall be thoroughly cleaned prior to application. The applied thickness is 5/8" and can withstand temperature to 350°F (standard design). For higher temperatures please contact factory.

GLASS (G)

Glass lining shall be ACE GLASS™ as applied by ACE HEATERS. The inside surface of the tank shall be thoroughly cleaned prior to application. Ceramic glass lining shall be fused to the steel shell at 1500°F. Lining shall have the same coefficient of expansion as the steel shell and be able to withstand abrupt changes in temperature. Lining shall be of a quality material and application as to resist corrosion. Magnesium and anodes are provided to help reduce electrolysis conditions. Suitable for potable water up to a maximum of 160°F.

Use SW For Section IV @ 125 psig Tanks. SW models are available in 24" to 42" diameter only. Use SJ for Section VIII @ 150 psig Tanks. (O.A.L.) Dimensions are nominal. ±2% tolerance should be allowed on dimensions and capacity. Subject to change. Order by Tank Model number. Add Tank Lining Code to Tank Model number when ordering. Glass lined tank supplied with pipe leg fittings. Saddles or brackets can be furnished welded for all lined tanks, or loose for unlined tanks only. Glass lined tanks limited to 10 feet shell length. Tanks listed have shell lengths in even foot increments. Tank sizes of 6009, 6609, and 7209 are available in unlined, cement, and pre-krete lined only. Contact Factory for custom sizing.

HORIZONTAL





Ace Heaters
130 Klug Circle
Corona, CA 92880
United States

(951) 738-2230
info@aceheaters.com
www.aceheaters.com

© 2024 ACE HEATERS
PRINTED IN THE U.S.A.